

| LIGHT STANDARD LOCATIONS |              |     |     |          | LIGHT STANDARD LOCATIONS |     |              |     |     |          |      |
|--------------------------|--------------|-----|-----|----------|--------------------------|-----|--------------|-----|-----|----------|------|
| NO.                      | STATION      | LT. | RT. | LOCATION | TYPE                     | NO. | STATION      | LT. | RT. | LOCATION | TYPE |
| (2) 1                    | N.B. 1073+90 | -   | -   | T.H. 5   | 8B0-40                   | 23  | N.B. 101+90  | -   | -   | T.H. 55  | 9-40 |
| 14                       | -            | -   | -   | -        | -                        | 24  | 17+70        | -   | -   | Circle C | 6-40 |
| 2                        | N.B. 1078+10 | -   | -   | T.H. 5   | 8B0-40                   | 25  | 15+30        | -   | -   | Circle C | 6-40 |
| 13                       | -            | -   | -   | -        | -                        | 26  | 13+10        | -   | -   | Circle C | 6-40 |
| (1) 3                    | N.B. 1080+60 | -   | -   | T.H. 5   | 8B0-40                   | 27  | N.B. 1084+30 | -   | -   | T.H. 5   | 6-40 |
| 4                        | -            | -   | -   | -        | -                        | 28  | S.B. 1090+20 | -   | -   | T.H. 5   | 9-40 |
| (1) 11                   | N.B. 1083+10 | -   | -   | T.H. 5   | 8B0-40                   | 29  | S.B. 1087+60 | -   | -   | Leg C    | 9-40 |
| 5                        | -            | -   | -   | -        | -                        | 30  | S.B. 1085+60 | -   | -   | Leg C    | 9-40 |
| (1) 10                   | N.B. 1085+30 | -   | -   | T.H. 5   | 8B0-40                   | 31  | 11+30        | -   | -   | Circle A | 6-40 |
| 6                        | -            | -   | -   | -        | -                        | 32  | S.B. 1079+60 | -   | -   | Leg C    | 6-40 |
| (1) 7                    | N.B. 1088+00 | -   | -   | T.H. 5   | 8B0-40                   | 33  | 11+30        | -   | -   | Circle B | 6-40 |
| 8                        | -            | -   | -   | -        | -                        | 34  | 9+00         | -   | -   | Circle B | 6-40 |
| (1) 15                   | N.B. 1063+90 | -   | -   | T.H. 5   | 9-40                     | 35  | 6+80         | -   | -   | Circle B | 6-40 |
| 16                       | N.B. 1068+15 | -   | -   | T.H. 5   | 9-40                     | 36  | 4+70         | -   | -   | Circle B | 6-40 |
| 17                       | N.B. 1070+45 | -   | -   | T.H. 5   | 9-40                     | 37  | 2+70         | -   | -   | Circle B | 6-40 |
| 18                       | N.B. 1073+30 | -   | -   | T.H. 5   | 9-40                     | 38  | 13+50        | -   | -   | Circle A | 6-40 |
| 19                       | -            | -   | -   | -        | -                        | 39  | 8+60         | -   | -   | L4L3     | 6-40 |
| 20                       | 13+40        | -   | -   | Ramp C   | 6-40                     | 40  | S.B. 104+30  | -   | -   | T.H. 55  | 6-40 |
| 21                       | 13+10        | -   | -   | Ramp C   | 6-40                     | 41  | 4+20         | -   | -   | L4L3     | 6-40 |
| 22                       | N.B. 1092+00 | -   | -   | T.H. 5   | 6-40                     | 42  | 6+20         | -   | -   | L4L3     | 6-40 |

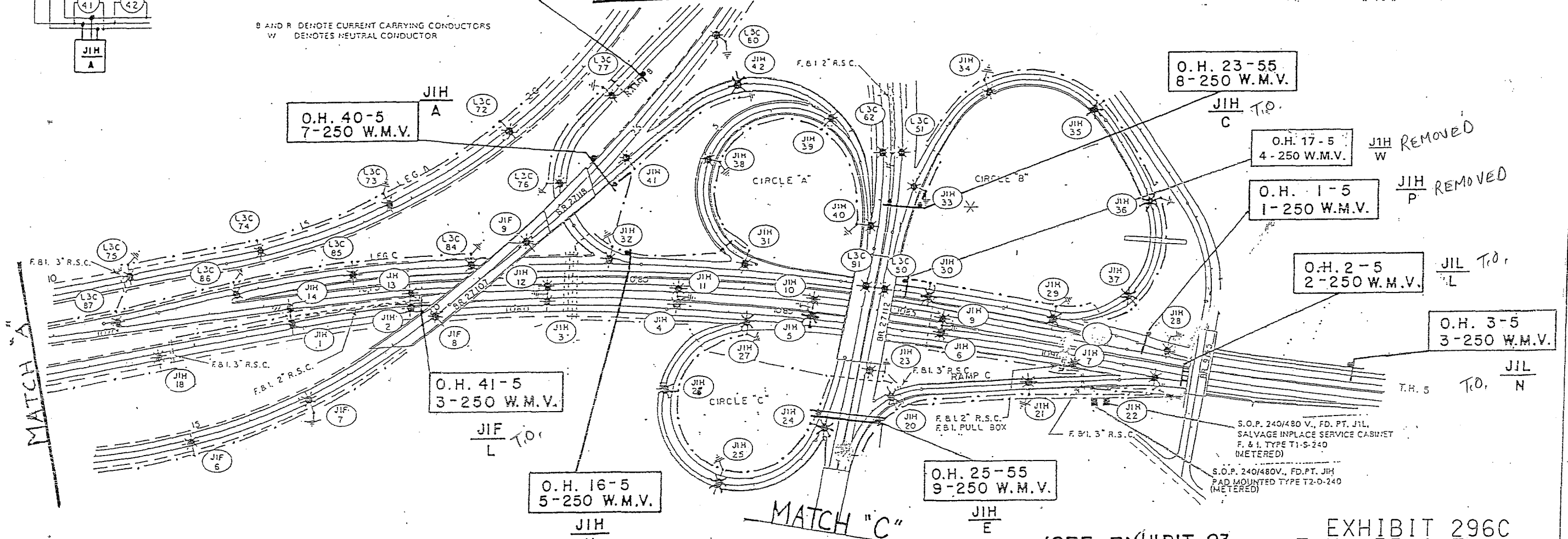
LOCATE POLES 9' BEHIND EDGE OF SHOULDER OR AS DIRECTED BY THE ENGINEER

(1) ANCHORAGE TO BE INSTALLED AS PART OF BARRIER (2) F. & I. DESIGN E LIGHT BASE WITH 6 BOLT CLUSTER

B AND R DENOTE CURRENT CARRYING CONDUCTORS W DENOTES NEUTRAL CONDUCTOR

MATCH "B"

MATCH "C"



**SHEET TOTAL**  
 56 - 200 WATT HIGH PRESSURE SODIUM LIGHTING UNITS  
 46 - 250 WATT MERCURY VAPOR SIGN LIGHTS

(SEE EXHIBIT 23 FOR TUNNEL LIGHTS ON FD. PT. J1L)

EXHIBIT 296C  
 T.H. 55 & T.H. 5  
 NEAR FT. SNELLING  
 XCEL ENERGY  
 (METERED)

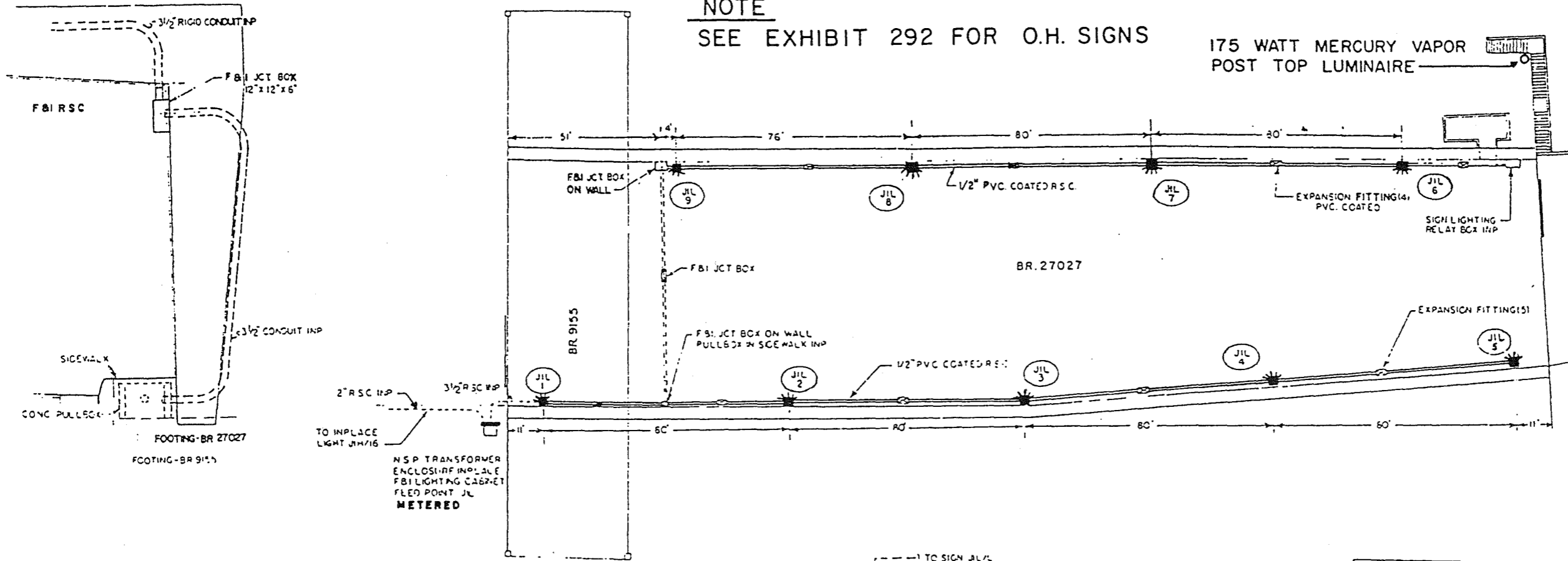
TOTAL  
 9-200 WATT HIGH PRESSURE SODIUM LIGHTING UNITS  
 1-175 WATT MERCURY VAPOR LIGHTING UNIT

N.S.P. AREA MAP NO. 104-2

NOTE  
 SEE EXHIBIT 292 FOR O.H. SIGNS

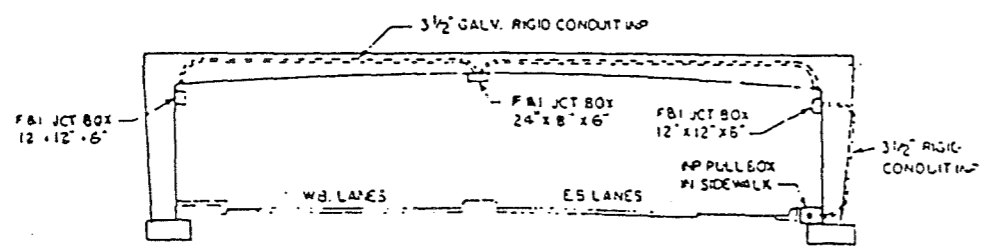


175 WATT MERCURY VAPOR  
 POST TOP LUMINAIRE

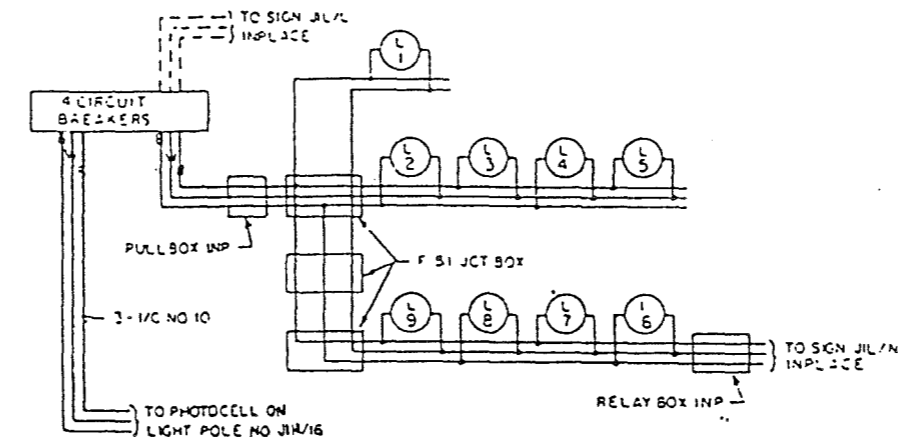


N.S.P. TRANSFORMER  
 ENCLOSURE IN PLACE  
 FBI LIGHTING CABINET  
 FLED POINT JIL  
 METERED

|                                    |            |
|------------------------------------|------------|
| 200 WATT HPS UNDERPASS UNIT        | 9 EACH     |
| 1/2" RIGID STEEL CONDUIT           | 320 LIN FT |
| EXPANSION FITTINGS                 | 9 EACH     |
| 12" x 12" x 6" JUNCTION BOX        | 2 EACH     |
| 24" x 8" x 6" JUNCTION BOX         | 1 EACH     |
| UNDERGROUND WIRE, CONDUCTOR NO. 10 | 150 LIN FT |



CROSS SECTION LOOKING NORTH



B AND R DENOTE CURRENT CARRYING CONDUCTORS  
 W DENOTES NEUTRAL CONDUCTORS

EXHIBIT 23 C  
 FORT SNELLING  
 TUNNEL  
 N.S.P.  
 METERED

FD. PT. JIL

TELETYPE POST - 1  
 7/86 NB8050