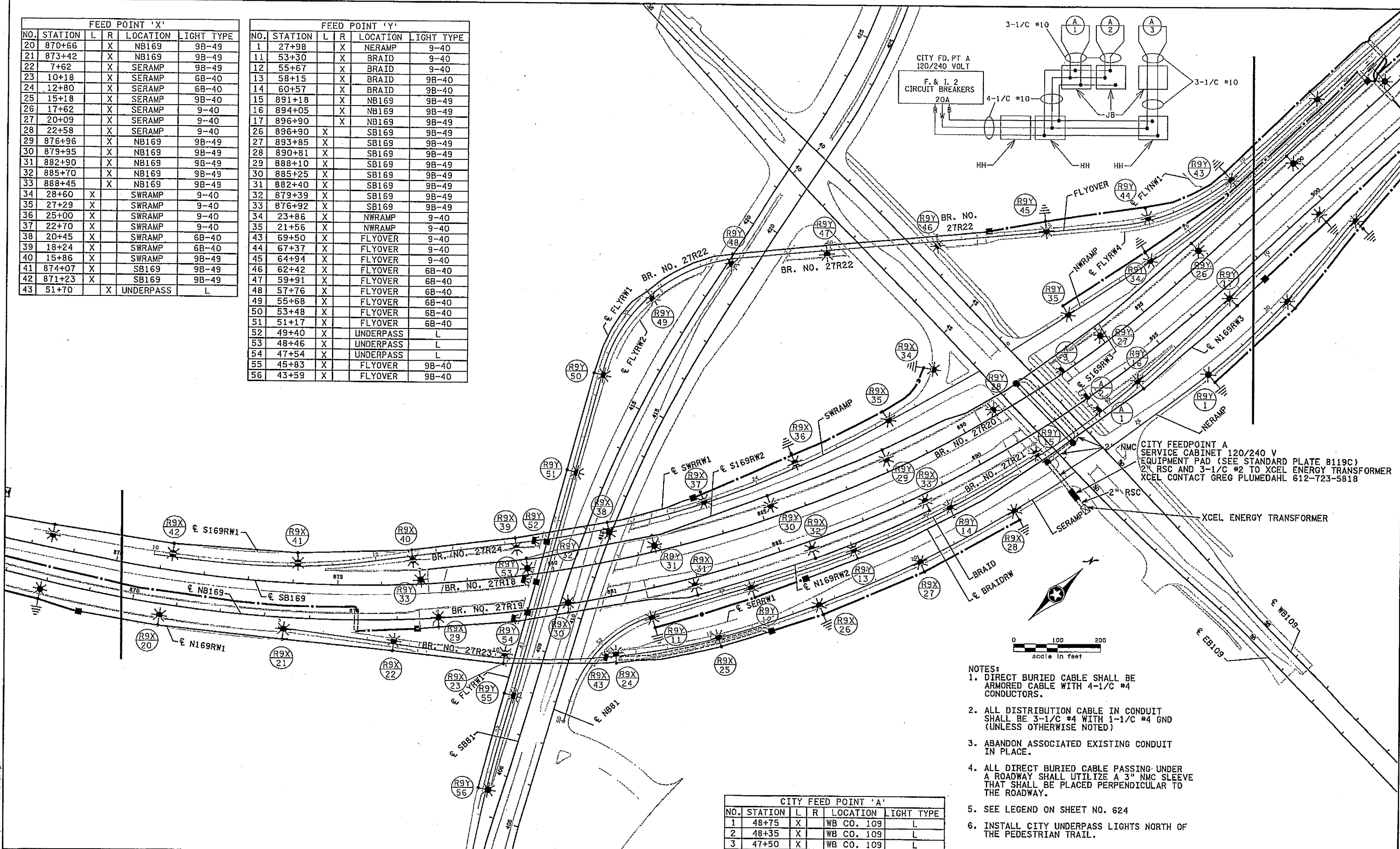


FEED POINT 'X'					
NO.	STATION	L	R	LOCATION	LIGHT TYPE
20	870+66	X		NB169	9B-49
21	873+42	X		NB169	9B-49
22	7+62	X		SERAMP	9B-49
23	10+18	X		SERAMP	6B-40
24	12+80	X		SERAMP	6B-40
25	15+18	X		SERAMP	9B-40
26	17+62	X		SERAMP	9-40
27	20+09	X		SERAMP	9-40
28	22+58	X		SERAMP	9-40
29	876+96	X		NB169	9B-49
30	879+95	X		NB169	9B-49
31	882+90	X		NB169	9B-49
32	885+70	X		NB169	9B-49
33	888+45	X		NB169	9B-49
34	28+60	X		SWRAMP	9-40
35	27+29	X		SWRAMP	9-40
36	25+00	X		SWRAMP	9-40
37	22+70	X		SWRAMP	9-40
38	20+45	X		SWRAMP	6B-40
39	18+24	X		SWRAMP	6B-40
40	15+86	X		SWRAMP	9B-49
41	874+07	X		SB169	9B-49
42	871+23	X		SB169	9B-49
43	51+70	X		UNDERPASS	L

FEED POINT 'Y'					
NO.	STATION	L	R	LOCATION	LIGHT TYPE
1	27+98		X	NERAMP	9-40
11	53+30		X	BRAID	9-40
12	55+67		X	BRAID	9-40
13	58+15		X	BRAID	9B-40
14	60+57		X	BRAID	9B-40
15	891+18		X	NB169	9B-49
16	894+05		X	NB169	9B-49
17	896+90		X	NB169	9B-49
26	896+90	X		SB169	9B-49
27	893+85	X		SB169	9B-49
28	890+81	X		SB169	9B-49
29	888+10	X		SB169	9B-49
30	885+25	X		SB169	9B-49
31	882+40	X		SB169	9B-49
32	879+39	X		SB169	9B-49
33	876+92	X		SB169	9B-49
34	23+86	X		NWRAMP	9-40
35	21+56	X		NWRAMP	9-40
43	69+50	X		FLYOVER	9-40
44	67+37	X		FLYOVER	9-40
45	64+94	X		FLYOVER	9-40
46	62+42	X		FLYOVER	6B-40
47	59+91	X		FLYOVER	6B-40
48	57+76	X		FLYOVER	6B-40
49	55+68	X		FLYOVER	6B-40
50	53+48	X		FLYOVER	6B-40
51	51+17	X		FLYOVER	6B-40
52	49+40	X		UNDERPASS	L
53	48+46	X		UNDERPASS	L
54	47+54	X		UNDERPASS	L
55	45+83	X		FLYOVER	9B-40
56	43+59	X		FLYOVER	9B-40



CITY FEED POINT 'A'					
NO.	STATION	L	R	LOCATION	LIGHT TYPE
1	48+75	X		WB CO. 109	L
2	48+35	X		WB CO. 109	L
3	47+50	X		WB CO. 109	L

- NOTES:
- DIRECT BURIED CABLE SHALL BE ARMORED CABLE WITH 4-1/C #4 CONDUCTORS.
 - ALL DISTRIBUTION CABLE IN CONDUIT SHALL BE 3-1/C #4 WITH 1-1/C #4 GND (UNLESS OTHERWISE NOTED)
 - ABANDON ASSOCIATED EXISTING CONDUIT IN PLACE.
 - ALL DIRECT BURIED CABLE PASSING UNDER A ROADWAY SHALL UTILIZE A 3" NMC SLEEVE THAT SHALL BE PLACED PERPENDICULAR TO THE ROADWAY.
 - SEE LEGEND ON SHEET NO. 624
 - INSTALL CITY UNDERPASS LIGHTS NORTH OF THE PEDESTRIAN TRAIL.

I hereby certify that this plan, specification, or report was prepared by me or under my direct supervision and that I am a duly Licensed Professional Engineer under the laws of the State of Minnesota.
 Print Name: BRIAN D. HOLT
Brian D. Holt
 Date: 3/7/08 License: 21428

STATE AID PROJECT NO. X
 DRAWN BY J. KRUSE
 STATE PROJECT NO. 2750-57
 DESIGNED BY B. HOLT
 COUNTY PROJECT NO. X
 CHECKED BY B. HOLT
 CITY PROJECT NO. X
 COMM. NO. 0065837



CLIENT NAME
 LIGHTING PLAN
 TH 169

SHEET
 634
 OF
 837

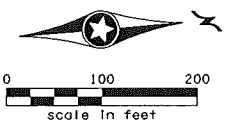
10:24:50 AM
 3/7/2008
 ...\\s837r\ee\p\cm\5837R.LT2.dgn

NO.	DATE	BY	CHKD	APPR	REVISION

PLOTTED/REVISED: 12/14/2009

FILES: Microstation Files\New\5837R.LT3.dgn

DISTRICT #: METRO
PLOT NAME: new\5837R.LT3
PATH & FILENAME: S:\TRAFFIC\LIGHTING\Plans\69\sr\69\Microstation Files\New\5837R.LT3.dgn

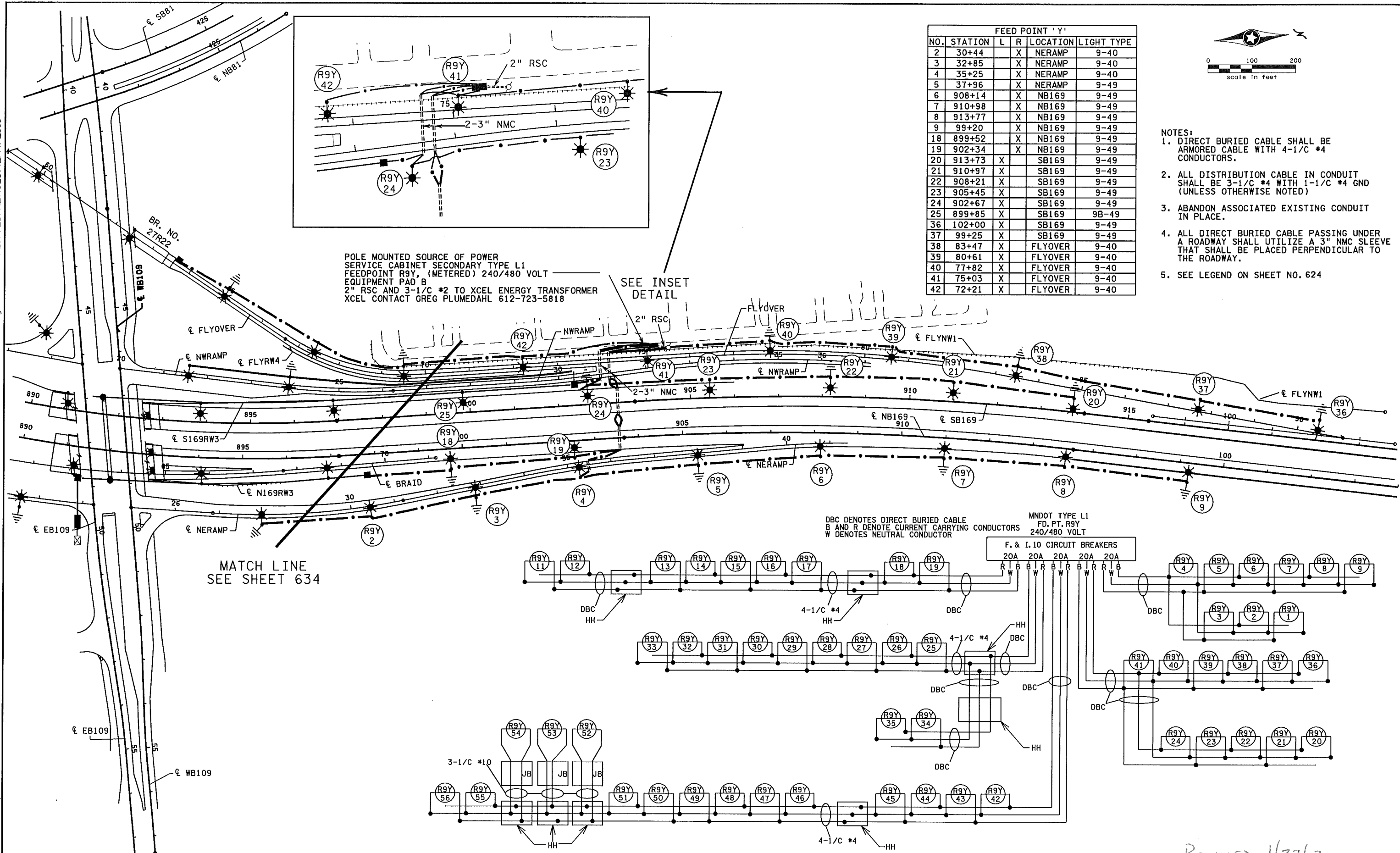


FEED POINT 'Y'					
NO.	STATION	L	R	LOCATION	LIGHT TYPE
2	30+44		X	NERAMP	9-40
3	32+85		X	NERAMP	9-40
4	35+25		X	NERAMP	9-40
5	37+96		X	NERAMP	9-49
6	908+14		X	NB169	9-49
7	910+98		X	NB169	9-49
8	913+77		X	NB169	9-49
9	99+20		X	NB169	9-49
18	899+52		X	NB169	9-49
19	902+34		X	NB169	9-49
20	913+73	X		SB169	9-49
21	910+97	X		SB169	9-49
22	908+21	X		SB169	9-49
23	905+45	X		SB169	9-49
24	902+67	X		SB169	9-49
25	899+85	X		SB169	9B-49
36	102+00	X		SB169	9-49
37	99+25	X		SB169	9-49
38	83+47	X		FLYOVER	9-40
39	80+61	X		FLYOVER	9-40
40	77+82	X		FLYOVER	9-40
41	75+03	X		FLYOVER	9-40
42	72+21	X		FLYOVER	9-40

- NOTES:
- DIRECT BURIED CABLE SHALL BE ARMORED CABLE WITH 4-1/C #4 CONDUCTORS.
 - ALL DISTRIBUTION CABLE IN CONDUIT SHALL BE 3-1/C #4 WITH 1-1/C #4 GND (UNLESS OTHERWISE NOTED)
 - ABANDON ASSOCIATED EXISTING CONDUIT IN PLACE.
 - ALL DIRECT BURIED CABLE PASSING UNDER A ROADWAY SHALL UTILIZE A 3" NMC SLEEVE THAT SHALL BE PLACED PERPENDICULAR TO THE ROADWAY.
 - SEE LEGEND ON SHEET NO. 624

POLE MOUNTED SOURCE OF POWER
SERVICE CABINET SECONDARY TYPE L1
FEEDPOINT R9Y, (METERED) 240/480 VOLT
EQUIPMENT PAD B
2" RSC AND 3-1/C #2 TO XCEL ENERGY TRANSFORMER
XCEL CONTACT GREG PLUMEDAHL 612-723-5818

SEE INSET
DETAIL



MATCH LINE
SEE SHEET 634

DBC DENOTES DIRECT BURIED CABLE
B AND R DENOTE CURRENT CARRYING CONDUCTORS
W DENOTES NEUTRAL CONDUCTOR

MNDOT TYPE L1
FD. PT. R9Y
240/480 VOLT

F. & I. 10 CIRCUIT BREAKERS
20A 20A 20A 20A 20A

REVISED 1/27/2010

NO	DATE	BY	CHKD	APPR	REVISION

*FILE#

I hereby certify that this plan, specification, or report was prepared by me or under my direct supervision and that I am a duly Licensed Professional Engineer under the laws of the State of Minnesota.
Print Name: BRIAN D. HOLT
Date: _____ License # 21428

STATE AID PROJECT NO. X
DESIGNED BY B. HOLT
COUNTY PROJECT NO. 2750-57
CITY PROJECT NO. X
COMM. NO. 0065837



CLIENT NAME
LIGHTING PLAN
TH 169

SHEET
635
OF
837