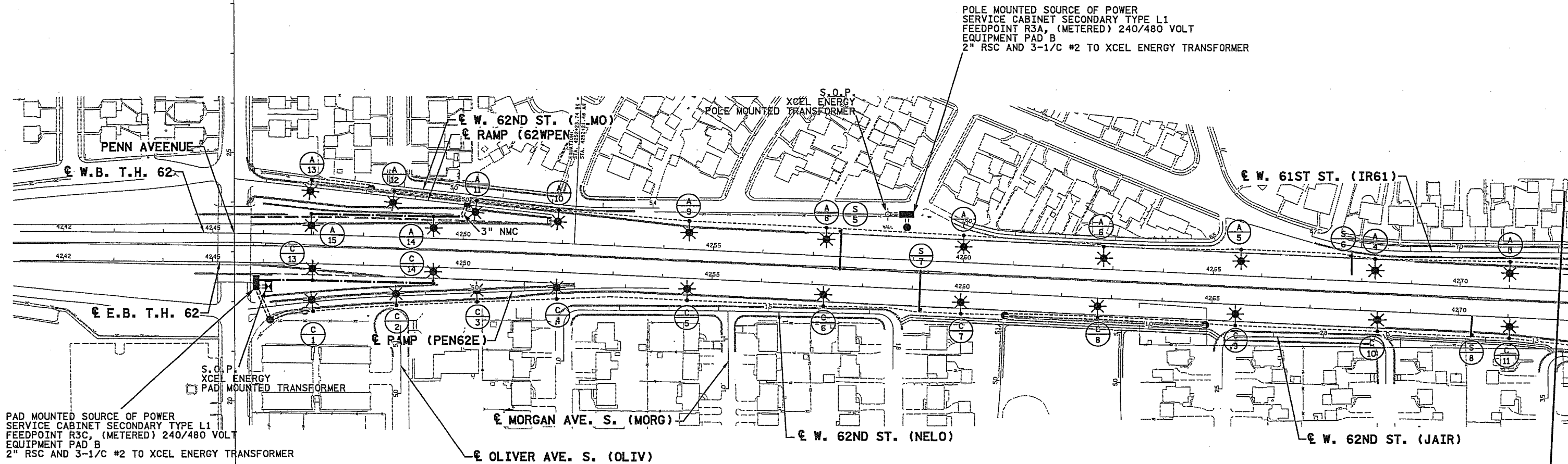
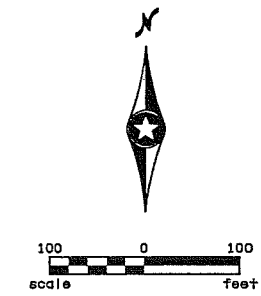


NOTES:

1. ALL CONDUIT SHALL BE 1 1/2" NMC (UNLESS OTHERWISE NOTED)
2. DIRECT BURIED CABLE SHALL BE ARMORED CABLE WITH 4-1/2" #4 CONDUCTORS.
3. ALL DISTRIBUTION CABLE IN CONDUIT SHALL BE 3-1/2" #4 WITH 1-1/2" #4 GND (UNLESS OTHERWISE NOTED)
4. CONNECTING INPLACE LIGHTING UNITS TO THE NEW LIGHTING CIRCUITS IS INCIDENTAL TO THE CONDUIT & WIRE.
5. ABANDON ASSOCIATED EXISTING CONDUIT IN PLACE.



PAD MOUNTED SOURCE OF POWER
SERVICE CABINET SECONDARY TYPE L1
FEEDPOINT R3C, (METERED) 240/480 VOLT
EQUIPMENT PAD B
2" RSC AND 3-1/2" #2 TO XCEL ENERGY TRANSFORMER

POLE MOUNTED SOURCE OF POWER
SERVICE CABINET SECONDARY TYPE L1
FEEDPOINT R3A, (METERED) 240/480 VOLT
EQUIPMENT PAD B
2" RSC AND 3-1/2" #2 TO XCEL ENERGY TRANSFORMER

FEED POINT "R3A" LIGHTING STANDARDS AND BASES									
NO.	STATION	LT.	RT.	LOCATION	TYPE	FIXTURE	BASE TYPE	POLE HEIGHT	WALL #
3	4270 + 99	X		62 W.B.	9B-49	400 W	BAR	TYP	RW49
4	4268 + 24	X		62 W.B.	9B-49	400 W	BAR	TYP	RW49
5	4265 + 55	X		62 W.B.	9B-49	400 W	BAR	TYP	RW49
6	4262 + 80	X		62 W.B.	9B-49	400 W	BAR	TYP	RW50
7	4259 + 98	X		62 W.B.	9B-49	400 W	BAR	45'	RW50
8	4257 + 23	X		62 W.B.	9B-49	400 W	BAR	45'	RW50
9	4254 + 48	X		62 W.B.	9B-49	400 W	BAR	40'	RW50
10	4251 + 90	X		62 W.B.	9B-49	400 W	BAR	40'	RW50
11	50 + 23	X		62WPEN	9B-40	250 W	BAR	30'	RW50
12	48 + 55	X		62WPEN	9B-40	250 W	BAR	TYP	RW50
13	46 + 89	X		62WPEN	9B-40	250 W	E	TYP	N/A
14	4249 + 40	X		62 W.B.	9-49	400 W	H	TYP	N/A
15	4246 + 95	X		62 W.B.	9-49	400 W	H	TYP	N/A

FEED POINT "R3C" LIGHTING STANDARDS AND BASES									
NO.	STATION	LT.	RT.	LOCATION	TYPE	FIXTURE	BASE TYPE	POLE HEIGHT	WALL #
1	46 + 72		X	PEN62E	9B-40	250 W	BAR	TYP	RW53
2	48 + 39		X	PEN62E	9B-40	250 W	BAR	35'	RW53
3	50 + 03		X	PEN62E	9B-40	250 W	BAR	30'	RW53
4	51 + 63		X	PEN62E	9B-49	400 W	BAR	40'	RW53
5	4254 + 51		X	62 E.B.	9B-49	400 W	BAR	40'	RW53
6	4257 + 24		X	62 E.B.	9B-49	400 W	BAR	TYP	RW53
7	4260 + 00		X	62 E.B.	9B-49	400 W	BAR	45'	RW53
8	4262 + 75		X	62 E.B.	9-49	400 W	H	TYP	N/A
9	4265 + 50		X	62 E.B.	9B-49	400 W	BAR	TYP	RW54
10	4268 + 35		X	62 E.B.	9B-49	400 W	BAR	TYP	RW54
11	4271 + 05		X	62 E.B.	9B-49	400 W	BAR	TYP	RW54
13	4246 + 99		X	62 E.B.	9-49	400 W	H	TYP	N/A
14	4249 + 42		X	62 E.B.	9-49	400 W	H	TYP	N/A

I hereby certify that this plan, specification, or report was prepared by me or under my direct supervision and that I am a duly Licensed Professional Electrical Engineer under the laws of the State of Minnesota.
Print Name: Brian D. Holt
Date: 1-9-06 License # 21428

DRAWN BY
J. KRUSE
DESIGNED BY
J. KRUSE
CHECKED BY
B. HOLT
COMM. NO. 0034702



MINNESOTA DEPARTMENT OF TRANSPORTATION SHEET
LIGHTING PLAN 1355
S.P. 2782-281 (T.H. 35W) OF
MAIN LINE 1681

7:02:23 PM 1/4/2006 \\N:\P\proj\2782281.LTC.DGN

NO	DATE	BY	CHK	APPR	REVISION

SEE SHEET NO.1324 FOR LEGEND

NOTES:

1. ALL CONDUIT SHALL BE 1 1/2" NMC (UNLESS OTHERWISE NOTED)
2. DIRECT BURIED CABLE SHALL BE ARMORED CABLE WITH 4-1/C #4 CONDUCTORS.
3. ALL DISTRIBUTION CABLE IN CONDUIT SHALL BE 3-1/C #4 WITH 1-1/C #4 GND (UNLESS OTHERWISE NOTED)
4. CONNECTING INPLACE LIGHTING UNITS TO THE NEW LIGHTING CIRCUITS IS INCIDENTAL TO THE CONDUIT & WIRE.
5. ABANDON ASSOCIATED EXISTING CONDUIT IN PLACE.

POLE MOUNTED SOURCE OF POWER
SERVICE CABINET SECONDARY TYPE L2
FEEDPOINT BF1, (METERED) 240/480 VOLT
EQUIPMENT PAD B
2" RSC AND 3-1/C #3/0 TO XCEL ENERGY TRANSFORMER

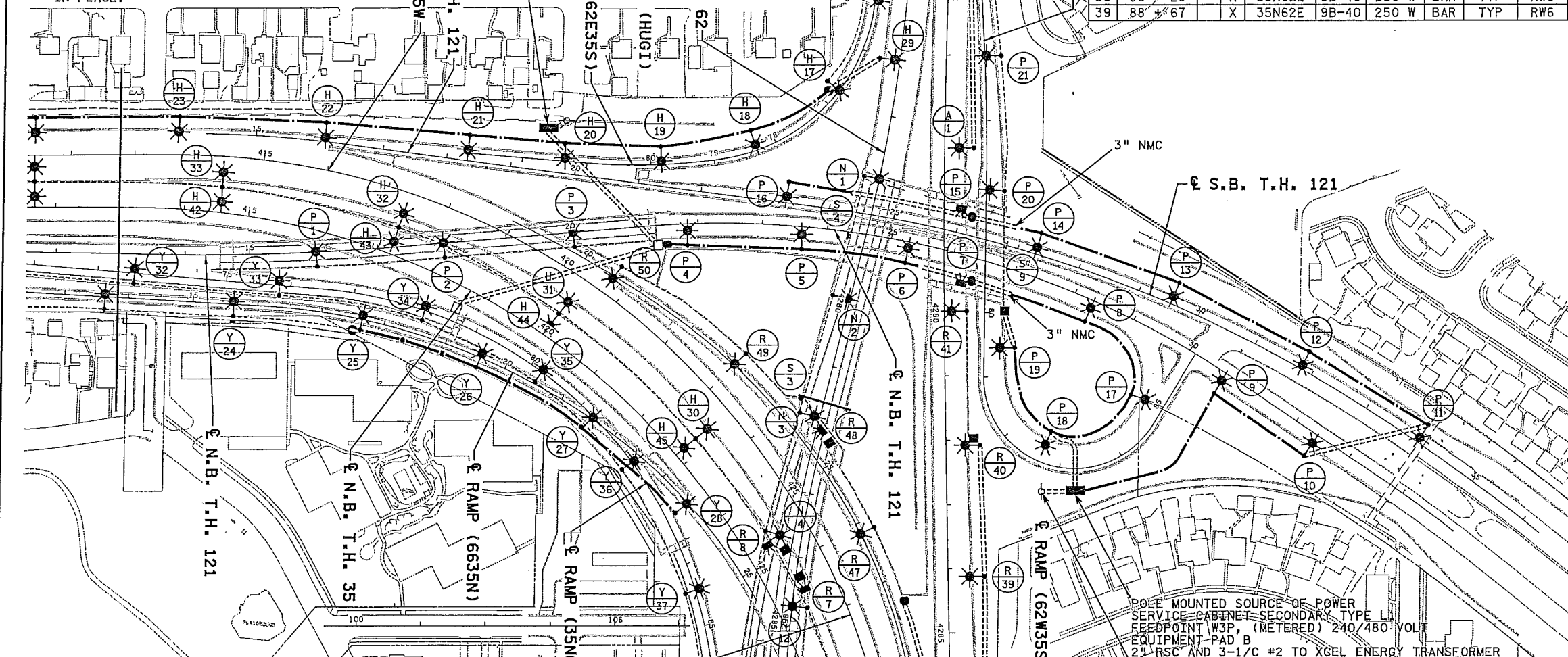
FEED POINT "W3Y"									
LIGHTING STANDARDS AND BASES									
NO.	STATION	LT.	RT.	LOCATION	TYPE	FIXTURE	BASE TYPE	POLE HEIGHT	WALL #
24	15 + 63		X	6635N	9-40	250 W	BAR	TYP	RW1
25	17 + 64		X	6635N	9-40	250 W	E	TYP	N/A
26	19 + 55		X	6635N	9-40	250 W	E	TYP	N/A
27	21 + 46		X	35N62E	6-30	250 W	E	TYP	N/A
28	23 + 37		X	6635N	9-40	250 W	E	TYP	N/A
29	73 + 57		X	35N62E	9B-40	250 W	BAR	TYP	RW2
30	75 + 83		X	35N62E	9B-40	250 W	BAR	TYP	RW2
31	80 + 20		X	35N62E	6B-40	250 W	BAR	TYP	BRIDGE
32	82 + 19		X	35N62E	6B-40	250 W	BAR	TYP	BRIDGE
33	84 + 44		X	35N62E	9B-40	250 W	BAR	TYP	RW6
34	86 + 28		X	35N62E	9B-40	250 W	BAR	TYP	RW6
35	88 + 67		X	35N62E	9B-40	250 W	BAR	TYP	RW6

FEED POINT "W3H"									
LIGHTING STANDARDS AND BASES									
NO.	STATION	LT.	RT.	LOCATION	TYPE	FIXTURE	BASE TYPE	POLE HEIGHT	WALL #
16	75 + 20		X	62E35S	9B-40	250 W	BAR	TYP	RW54
17	76 + 73		X	62E35S	9B-40	250 W	BAR	TYP	RW54
18	78 + 31		X	62E35S	9-40	250 W	E	TYP	N/A
19	79 + 83		X	62E35S	9-40	250 W	E	TYP	N/A
20	81 + 35		X	62E35S	9-40	250 W	E	TYP	N/A
21	18 + 31	X		121 S.B.	9-40	250 W	E	TYP	N/A
22	16 + 06	X		121 S.B.	9-40	250 W	E	TYP	N/A
23	413 + 68	X		35W S.B.	9-40	250 W	E	TYP	N/A
29	4276 + 12	X		62 E.B.	9-49	400 W	H	TYP	N/A
30	422 + 81	X		35W N.B.	9BD-49	400 W	MED	TYP	N/A
31	420 + 01	X		35W N.B.	9BD-49	400 W	MED	TYP	N/A
32	417 + 28	X		35W N.B.	9BD-49	400 W	MED	TYP	N/A
33	414 + 55	X		35W N.B.	9BD-49	400 W	MED	TYP	N/A
42	414 + 55	X		35W N.B.	9BD-49	400 W	MED	TYP	N/A
43	417 + 28	X		35W N.B.	9BD-49	400 W	MED	TYP	N/A
44	420 + 01	X		35W N.B.	9BD-49	400 W	MED	TYP	N/A
45	422 + 81	X		35W N.B.	9BD-49	400 W	MED	TYP	N/A

FEED POINT "R3A"									
LIGHTING STANDARDS AND BASES									
NO.	STATION	LT.	RT.	LOCATION	TYPE	FIXTURE	BASE TYPE	POLE HEIGHT	WALL #
1	4277 + 44	X		62 W.B.	9-40	250 W	E	TYP	N/A
2	4273 + 74	X		62 W.B.	9B-49	400 W	BAR	TYP	RW49

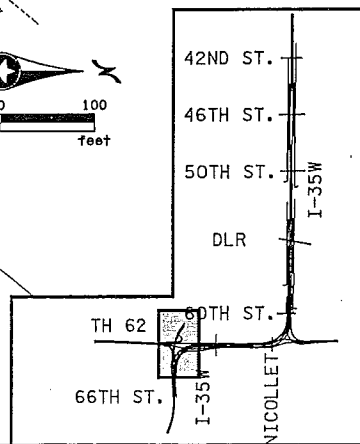
FEED POINT "R3C"									
LIGHTING STANDARDS AND BASES									
NO.	STATION	LT.	RT.	LOCATION	TYPE	FIXTURE	BASE TYPE	POLE HEIGHT	WALL #
12	4272 + 73	X		62 E.B.	9B-49	400W	BAR	TYP	RW54

FEED POINT "W3P"									
LIGHTING STANDARDS AND BASES									
NO.	STATION	LT.	RT.	LOCATION	TYPE	FIXTURE	BASE TYPE	POLE HEIGHT	WALL #
1	16 + 05		X	121 N.B.	6B-40	250 W	BAR	TYP	BRIDGE
2	18 + 04		X	121 N.B.	6B-40	250 W	BAR	TYP	BRIDGE
3	20 + 05		X	121 N.B.	6B-40	250 W	BAR	TYP	BRIDGE
4	21 + 84		X	121 N.B.	9-40	250 W	E	TYP	N/A
5	23 + 60		X	121 N.B.	9-40	250 W	E	TYP	N/A
6	25 + 29		X	121 N.B.	9-40	250 W	E	TYP	N/A
7	BRIDGE			BRIDGE	L	250 W	N/A	N/A	N/A
8	28 + 31		X	121 N.B.	9-40	250 W	E	TYP	N/A
9	30 + 69		X	121 N.B.	9-40	250 W	E	TYP	N/A
10	32 + 40		X	121 N.B.	9-40	250 W	E	TYP	N/A
11	33 + 94		X	121 S.B.	9-40	250 W	E	TYP	N/A
12	31 + 80	X		121 S.B.	9-40	250 W	E	TYP	N/A
13	29 + 52	X		121 S.B.	9-40	250 W	E	TYP	N/A
14	27 + 28	X		121 S.B.	9-40	250 W	E	TYP	N/A
15	BRIDGE			BRIDGE	L	250 W	N/A	N/A	N/A
16	23 + 33	X		121 S.B.	9-40	250 W	E	TYP	N/A
17	84 + 91	X		121L	9-40	250 W	E	TYP	N/A
18	82 + 66	X		121L	9-40	250 W	E	TYP	N/A
19	80 + 54	X		121L	9-40	250 W	E	TYP	N/A
20	78 + 10	X		121L	9B-40	250 W	BAR	TYP	RW49
21	76 + 00	X		121L	9B-49	400 W	BAR	TYP	RW49



FEED POINT "W3R"									
LIGHTING STANDARDS AND BASES									
NO.	STATION	LT.	RT.	LOCATION	TYPE	FIXTURE	BASE TYPE	POLE HEIGHT	WALL #
5	431 + 25		X	35W S.B.	9BD-49	400 W	MED	TYP	N/A
6	428 + 41		X	35W S.B.	9BD-49	400 W	MED	TYP	N/A
7	BRIDGE			BRIDGE	L	250 W	N/A	N/A	N/A
8	BRIDGE			BRIDGE	L	250 W	N/A	N/A	N/A
9	428 + 41		X	35W S.B.	9BD-49	400 W	MED	TYP	N/A
10	431 + 25		X	35W S.B.	9BD-49	400 W	MED	TYP	N/A
37	4288 + 12	X		62 W.B.	9B-40	250 W	BAR	TYP	RW48
38	4286 + 15	X		62 W.B.	9B-40	250 W	BAR	TYP	RW48
39	4284 + 13	X		62 W.B.	9-40	250 W	E	TYP	N/A
40	4282 + 09	X		62 W.B.	9-40	250 W	E	TYP	N/A
41	4280 + 00	X		62 W.B.	9B-40	250 W	BAR	TYP	RW73
46	28 + 45	X		62W35S	9-40	250 W	E	TYP	N/A
47	26 + 16	X		62W35S	9-40	250 W	BAR	TYP	RW64
48	BRIDGE			BRIDGE	L	250 W	N/A	N/A	N/A
49	22 + 89	X		62W35S	9B-40	250 W	BAR	TYP	RW64
50	20 + 55	X		62W35S	9B-40	250 W	BAR	TYP	N/A

FEED POINT "W3N"									
LIGHTING STANDARDS AND BASES									
NO.	STATION	LT.	RT.	LOCATION	TYPE	FIXTURE	BASE TYPE	POLE HEIGHT	WALL #
1	4277 + 99	X		62 E.B.	6B-40	250 W	BAR	TYP	BRIDGE
2	4279 + 91	X		62 E.B.	6B-40	250 W	BAR	TYP	BRIDGE
3	4281 + 81	X		62 E.B.	6B-40	250 W	BAR	TYP	BRIDGE
4	4283 + 68	X		62 E.B.	6B-40	250 W	BAR	TYP	BRIDGE
5	4285 + 90	X		62 E.B.	6B-40	250 W	BAR	TYP	BRIDGE
6	4288 + 15	X		62 E.B.	9B-40	250 W	BAR	TYP	RW57
12	4284 + 78	X		62 E.B.	6B-40	250 W	BAR	TYP	BRIDGE
13	4287 + 06	X		62 E.B.	6B-40	250 W	BAR	TYP	BRIDGE
14	4289 + 28	X		62 E.B.	9B-40	250 W	BAR	TYP	RW9



3/19/14 3 PM 1/5/2006 ...\\h1-mu\plan\c2782281_1.TB.dgn

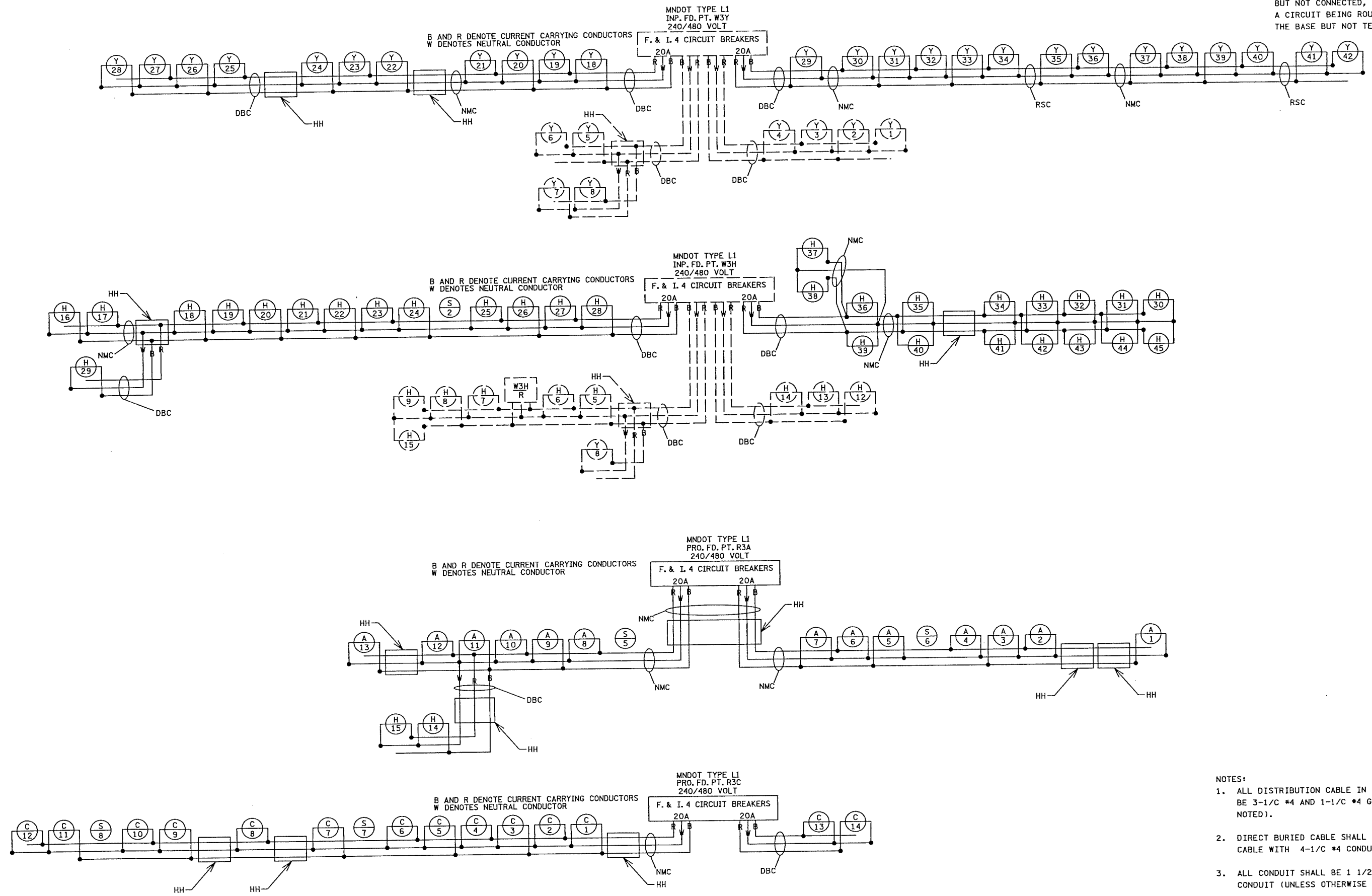
I hereby certify that this plan, specification, or report was prepared by me or under my direct supervision and that I am a duly Licensed Professional Electrical Engineer under the laws of the State of Minnesota.
 PrInt Name: **BRIAN D. HOLT**
Brian D. Holt
 Date: 1-9-06 License #: 21428

DRAWN BY J. KRUSE
 DESIGNED BY J. KRUSE
 CHECKED BY B. HOLT
 COMM. NO. 0034702



MINNESOTA DEPARTMENT OF TRANSPORTATION SHEET 1354 OF 1681
 LIGHTING PLAN
 S.P. 2782-281 (T.H. 35W)
 MAIN LINE

WHEN LIGHTS AND SIGNS ARE SHOWN BUT NOT CONNECTED, THIS SIGNIFIES A CIRCUIT BEING ROUTED THROUGH THE BASE BUT NOT TERMINATED THERE.



- NOTES:
1. ALL DISTRIBUTION CABLE IN CONDUIT SHALL BE 3-1/C #4 AND 1-1/C #4 GND (UNLESS OTHERWISE NOTED).
 2. DIRECT BURIED CABLE SHALL BE ARMORED CABLE WITH 4-1/C #4 CONDUCTORS.
 3. ALL CONDUIT SHALL BE 1 1/2" NON-METALLIC CONDUIT (UNLESS OTHERWISE NOTED).

10/11/00 AM 1/9/2006 ...\\h1-mu\p\lan\C2782281.LTU.dgn

NO	DATE	BY	CKD	APPR	REVISION

I hereby certify that this plan, specification, or report was prepared by me or under my direct supervision and that I am a duly Licensed Professional Electrical Engineer under the laws of the State of Minnesota.
 Print Name: **BRIAN D. HOLT**
Brian D. Holt
 Date: **1-9-06** License # **21428**

DRAWN BY
J. KRUSE
 DESIGNED BY
J. KRUSE
 CHECKED BY
B. HOLT
 COMM. NO. 0034702



MINNESOTA DEPARTMENT OF TRANSPORTATION SHEET
 LIGHTING PLAN 1374
 S.P. 2782-281 (T.H. 35W) OF
 WIRING DIAGRAMS 1681