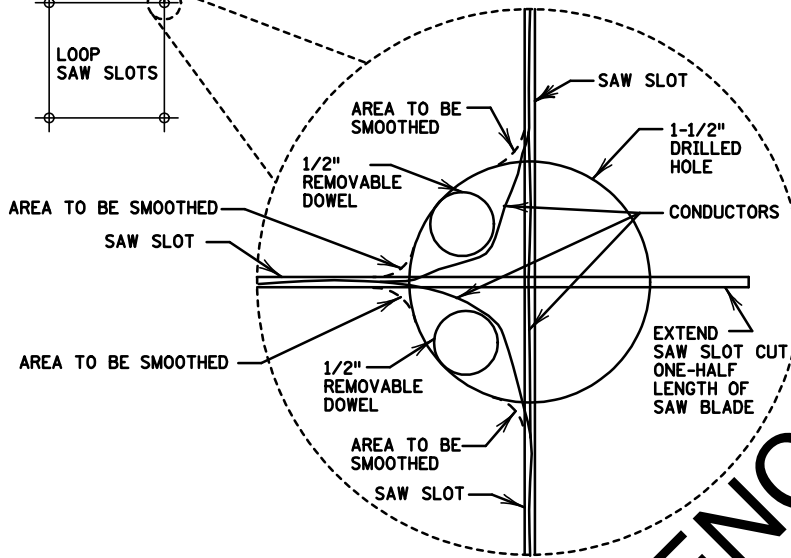
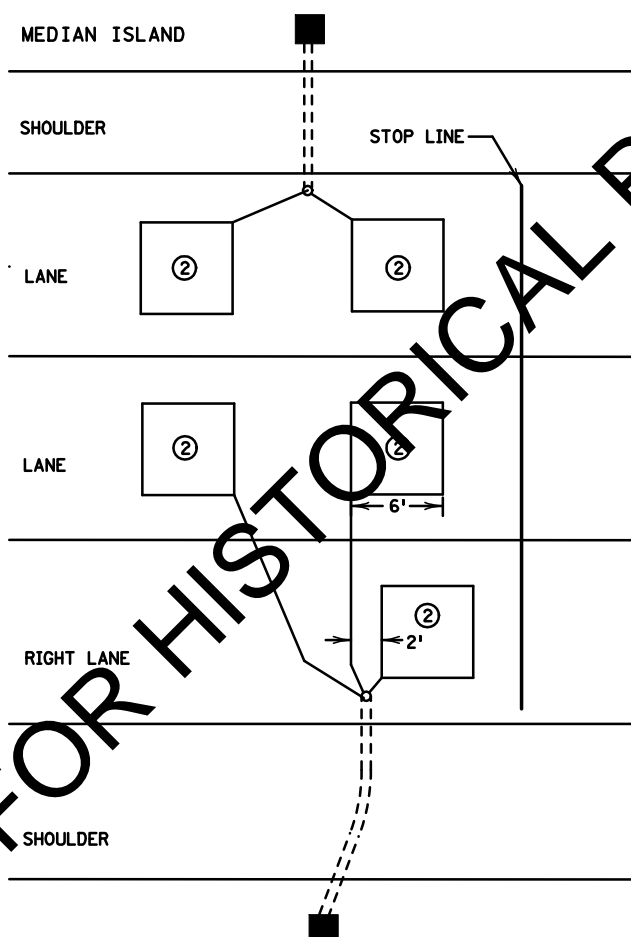


1-1/2" DRILLED HOLES AT CORNERS
LEAD-IN SAW SLOT

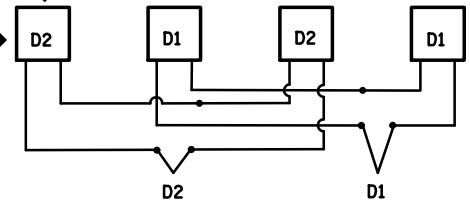
DRILL SAW CUT CORNERS



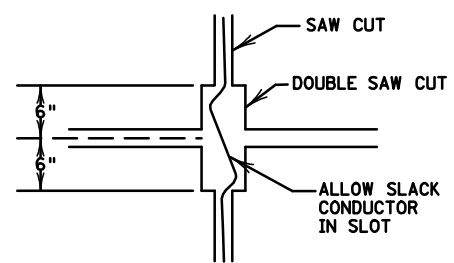
TYPICAL APPROACH DETECTORS ②



MULTIPLE LOOP SERIES HOOKUP



JOINT/CRACK INSTALLATION ①



NOTES:

- SEE SHEET 3 FOR ADDITIONAL NOTES.
- ① LOOP LEADS SHALL NOT CROSS TRANSVERSE JOINTS IN CONCRETE PAVEMENT. MOVE A LOOP TO THE NEXT PANEL AND INSTALL A SEPARATE CONDUIT TO THE HANDHOLE IF ALL LOOPS WILL NOT FIT ONE PANEL AND MAINTAIN SEPARATIONS SHOWN.
- ② SEE PLAN LAYOUT FOR ACTUAL DETECTOR SIZE AND PLACEMENT LOCATION.

APPROVED DECEMBER 11, 2009
Milakus
STATE DESIGN ENGINEER

STATE OF MINNESOTA
DEPARTMENT OF TRANSPORTATION
SAW CUT LOOP DETECTORS
DETAILS

SPECIFICATION
REFERENCE
2565

STANDARD
PLATE
NO.
8130E
2 OF 3

FOR HISTORICAL REFERENCE ONLY

