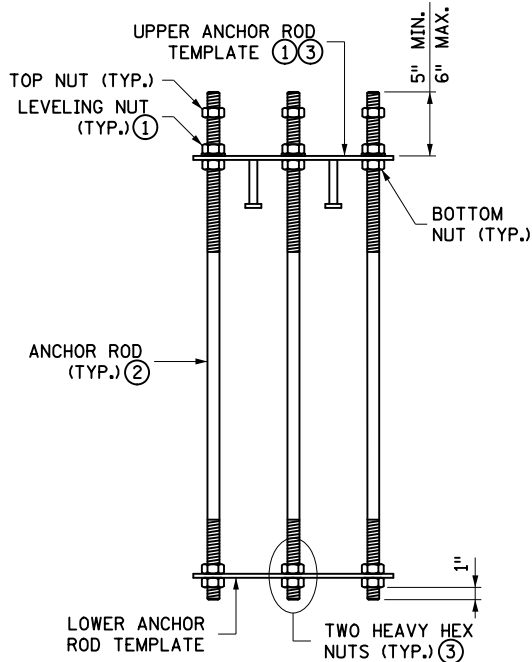


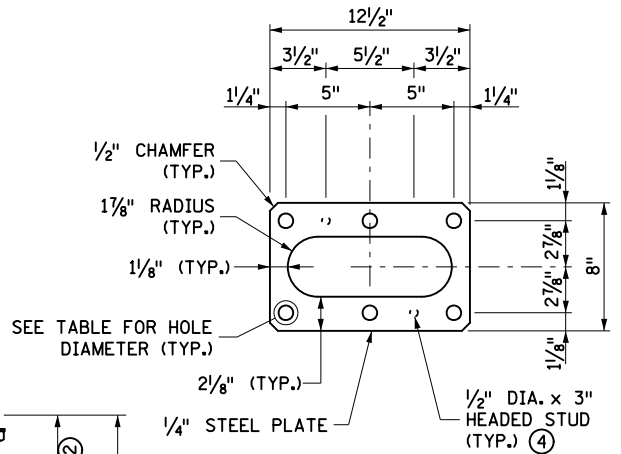
**PARTIAL ELEVATION
SHOWING ANCHOR ROD ASSEMBLY
AND HEX NUT POSITIONS AFTER
POLE INSTALLATION**



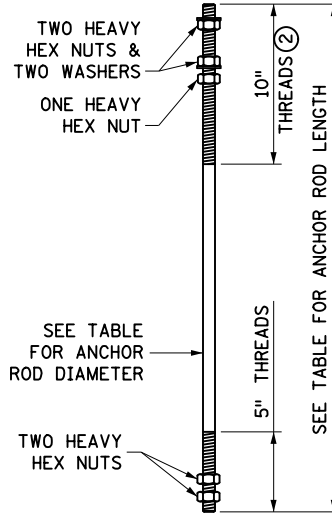
ANCHOR ROD ASSEMBLY

STANDARD BARRIER AND PARAPET TYPES (SEE PLANS FOR TYPE)	ANCHOR ROD LENGTH (5)
CONCRETE MEDIAN BARRIER SINGLE SLOPE	3' 5"
CONCRETE MEDIAN BARRIER TYPE F	3' 1"
CONCRETE MEDIAN BARRIER TYPE F W/GLARE SCREEN	3' 5"
RETAINING WALL CONCRETE PARAPET (TYPE P-1)	2' 9"
RETAINING WALL CONCRETE PARAPET (TYPE P-4)	3' 1"
RETAINING WALL CONCRETE BARRIER (TYPE F, TL-4)	3' 1"
RETAINING WALL CONCRETE BARRIER (TYPE S, TL-4)	3' 5"

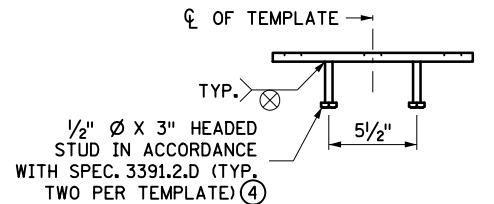
ANCHOR ROD DETAILS		
TYPE	ANCHOR ROD DIAMETER	HOLE DIAMETER
49' LIGHT POLES WITH TWIN ARMS 10' OR LONGER	1/4"	1 1/16"
OTHERS	1"	1 1/16"



**ANCHOR ROD TEMPLATE
TWO REQUIRED PER ASSEMBLY**



**ANCHOR ROD & HARDWARE
SIX REQUIRED PER ASSEMBLY**



**ELEVATION VIEW
UPPER ANCHOR
ROD TEMPLATE**

NOTES:

- FURNISH AND INSTALL PLATES IN ACCORDANCE WITH SPEC. 3306, AND GALVANIZE IN ACCORDANCE WITH SPEC. 3394.
- FURNISH AND INSTALL ANCHOR RODS IN ACCORDANCE WITH SPEC. 3385.2.B. DO NOT TACK WELD.
- SUBSTITUTE MATERIALS IN ACCORDANCE WITH SPEC. 1605.
- FURNISH AND INSTALL HEAVY HEX NUTS AND FLAT WASHERS IN ACCORDANCE WITH SPEC. 3391.2.A.
- (1) TEMPORARILY SECURE THE UPPER ANCHOR ROD TEMPLATE WITH THE LEVELING NUTS BEFORE CONCRETE PLACEMENT. AFTER CONCRETE PLACEMENT, LEAVE LEVELING NUTS SECURED AGAINST THE TEMPLATE UNTIL THE CLEANING AND LUBRICATING OF THE ANCHOR ROD CONNECTIONS BEFORE POLE PLACEMENT IS INITIATED.
- (2) PROTECT ANCHOR ROD THREADS AND LEVELING NUTS ABOVE THE UPPER ANCHOR ROD TEMPLATE FROM CONCRETE CONTAMINATION.
- (3) USE A 12" LONG WRENCH TO SNUG TIGHTEN NUTS PULLING THE HANDLE WITH ONE ARM IN ONE SMOOTH MOTION.
- (4) HEADED STUDS IN ACCORDANCE WITH SPEC. 3391.2.D. ON UPPER ANCHOR ROD TEMPLATE ONLY.
- (5) FOR RETAINING WALL APPLICATIONS, PROJECT-SPECIFIC BARRIER OR PARAPET CONNECTION DETAILS ARE REQUIRED. PROVIDE 2" MINIMUM COVER FOR THE ANCHOR ROD ASSEMBLY AND VERIFY ANCHOR ROD LENGTH.
- (6) LOCALLY ADJUST TOP-OF-BARRIER PROFILE AS REQUIRED TO PROVIDE A LEVEL ANCHOR ROD TEMPLATE PLACEMENT.
- (7) REMOVE SURFACE CONTAMINANTS AND APPLY SILICONE JOINT SEALER TO THE UPPER TEMPLATE AROUND THE ANCHOR RODS AND ANCHOR ROD HOLES, AND THE INNER AND OUTER EDGES WHERE THE PLATE MEETS CONCRETE. USE AN APPROVED SILICONE JOINT SEALANT FOUND ON MnDOT'S APPROVED/QUALIFIED PRODUCTS LIST UNDER BRIDGE PRODUCTS.

APPROVED APRIL 14, 2020

 STATE DESIGN ENGINEER

STATE OF MINNESOTA
 DEPARTMENT OF TRANSPORTATION
**ANCHOR ROD ASSEMBLY
 FOR LIGHT FOUNDATION-BARRIER**

SPECIFICATION REFERENCE
 2545
 3306

STANDARD PLATE NO.
8332E