

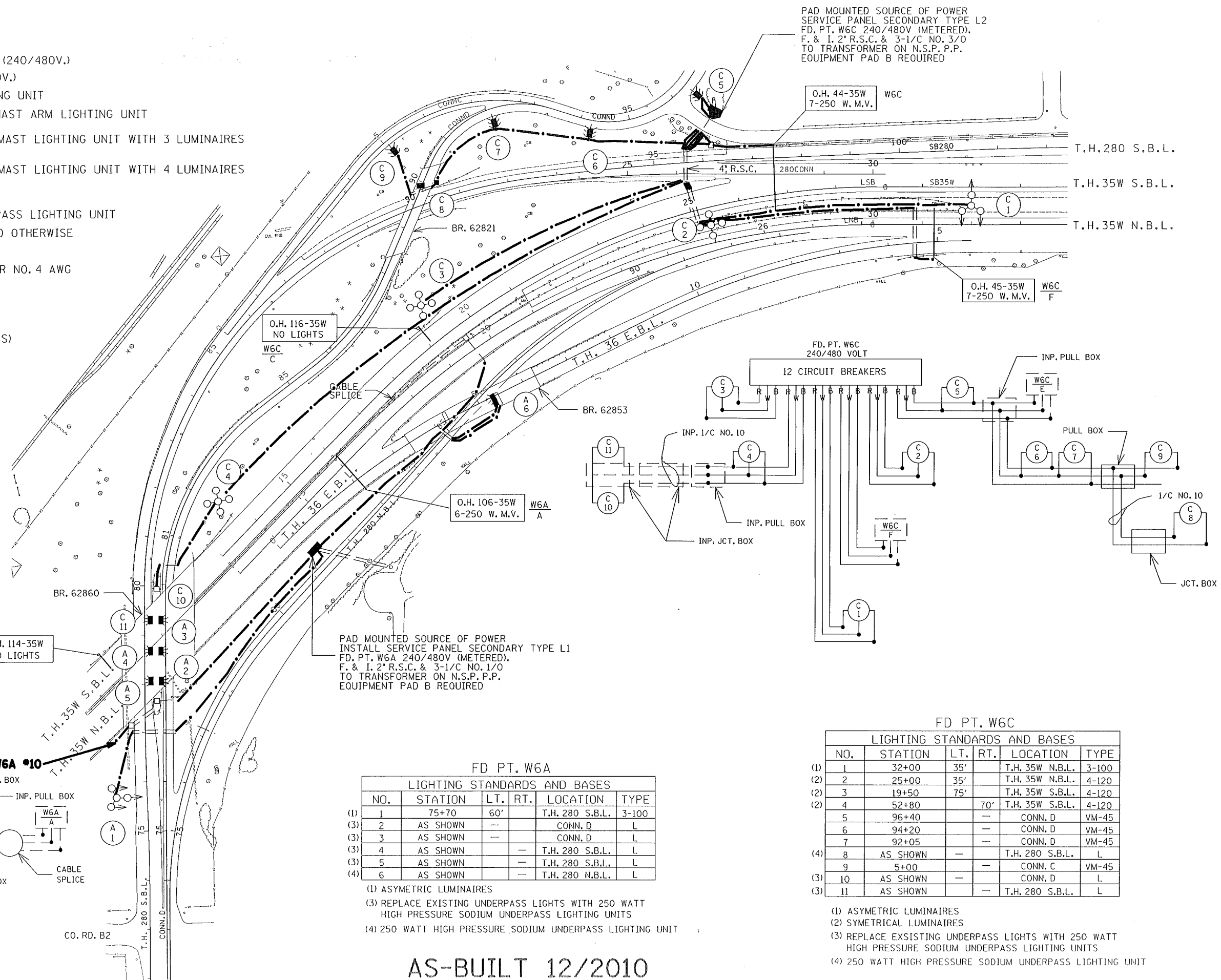
LEGEND

- INPLACE PAD MOUNTED SOURCE OF POWER (240/480V.)
- PAD MOUNTED SOURCE OF POWER (240/480V.)
- ⊛ 250 WATT HIGH PRESSURE SODIUM LIGHTING UNIT
- ⊛⊛ 250 WATT HIGH PRESSURE SODIUM TWIN MAST ARM LIGHTING UNIT
- ⊙⊙⊙ 1000 WATT HIGH PRESSURE SODIUM HIGH MAST LIGHTING UNIT WITH 3 LUMINAIRES
- ⊙⊙⊙⊙ 1000 WATT HIGH PRESSURE SODIUM HIGH MAST LIGHTING UNIT WITH 4 LUMINAIRES
- ⊞ INPLACE UNDERPASS LIGHTING UNIT
- ⊞ 250 WATT HIGH PRESSURE SODIUM UNDERPASS LIGHTING UNIT
- == 3" RIGID STEEL CONDUIT EXCEPT AS NOTED OTHERWISE
- INPLACE RIGID STEEL CONDUIT
- DIRECT BURIED POWER CABLE 3 CONDUCTOR NO. 4 AWG ARMORED CABLE SPEC NO. 3804 & 3805
- PULL BOX
- INPLACE PULL BOX
- ⊥ PERMANENT GROUND ROD (25 OHMS OR LESS)
- INPLACE OVERHEAD SIGN

CONSTRUCTION NOTES

- (1) DO NOT CONNECT OVERHEAD SIGNS UNLESS SHOWN ON WIRING DIAGRAM
- (2) ABANDON ALL INPLACE CABLE, BUT REMOVE FROM CONDUIT BEING REUSED

PAD MOUNTED SOURCE OF POWER
SERVICE PANEL SECONDARY TYPE L2
FD, PT. W6C 240/480V (METERED),
F. & I. 2" R.S.C. & 3-1/C NO. 3/0
TO TRANSFORMER ON N.S.P. P.P.
EQUIPMENT PAD B REQUIRED



PAD MOUNTED SOURCE OF POWER
INSTALL SERVICE PANEL SECONDARY TYPE L1
FD, PT. W6A 240/480V (METERED),
F. & I. 2" R.S.C. & 3-1/C NO. 1/0
TO TRANSFORMER ON N.S.P. P.P.
EQUIPMENT PAD B REQUIRED

FD PT. W6A

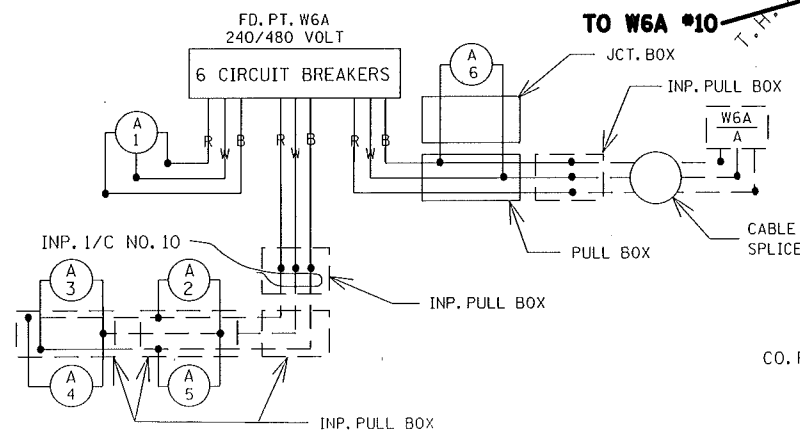
LIGHTING STANDARDS AND BASES					
NO.	STATION	LT.	RT.	LOCATION	TYPE
(1)	75+70	60'		T.H. 280 S.B.L.	3-100
(3)	2	AS SHOWN	—	CONN. D	L
(3)	3	AS SHOWN	—	CONN. D	L
(3)	4	AS SHOWN	—	T.H. 280 S.B.L.	L
(3)	5	AS SHOWN	—	T.H. 280 S.B.L.	L
(4)	6	AS SHOWN	—	T.H. 280 N.B.L.	L

- (1) ASYMETRIC LUMINAIRES
- (3) REPLACE EXISTING UNDERPASS LIGHTS WITH 250 WATT HIGH PRESSURE SODIUM UNDERPASS LIGHTING UNITS
- (4) 250 WATT HIGH PRESSURE SODIUM UNDERPASS LIGHTING UNIT

FD PT. W6C

LIGHTING STANDARDS AND BASES						
NO.	STATION	LT.	RT.	LOCATION	TYPE	
(1)	1	32+00	35'	T.H. 35W N.B.L.	3-100	
(2)	2	25+00	35'	T.H. 35W N.B.L.	4-120	
(2)	3	19+50	75'	T.H. 35W S.B.L.	4-120	
(2)	4	52+80	70'	T.H. 35W S.B.L.	4-120	
	5	96+40	—	CONN. D	VM-45	
	6	94+20	—	CONN. D	VM-45	
	7	92+05	—	CONN. D	VM-45	
(4)	8	AS SHOWN	—	T.H. 280 S.B.L.	L	
	9	5+00	—	CONN. C	VM-45	
(3)	10	AS SHOWN	—	CONN. D	L	
(3)	11	AS SHOWN	—	T.H. 280 S.B.L.	L	

- (1) ASYMETRIC LUMINAIRES
- (2) SYMETRICAL LUMINAIRES
- (3) REPLACE EXISTING UNDERPASS LIGHTS WITH 250 WATT HIGH PRESSURE SODIUM UNDERPASS LIGHTING UNITS
- (4) 250 WATT HIGH PRESSURE SODIUM UNDERPASS LIGHTING UNIT



B AND R DENOTE CURRENT CARRYING CONDUCTORS
W DENOTES NEUTRAL CONDUCTOR

AS-BUILT 12/2010