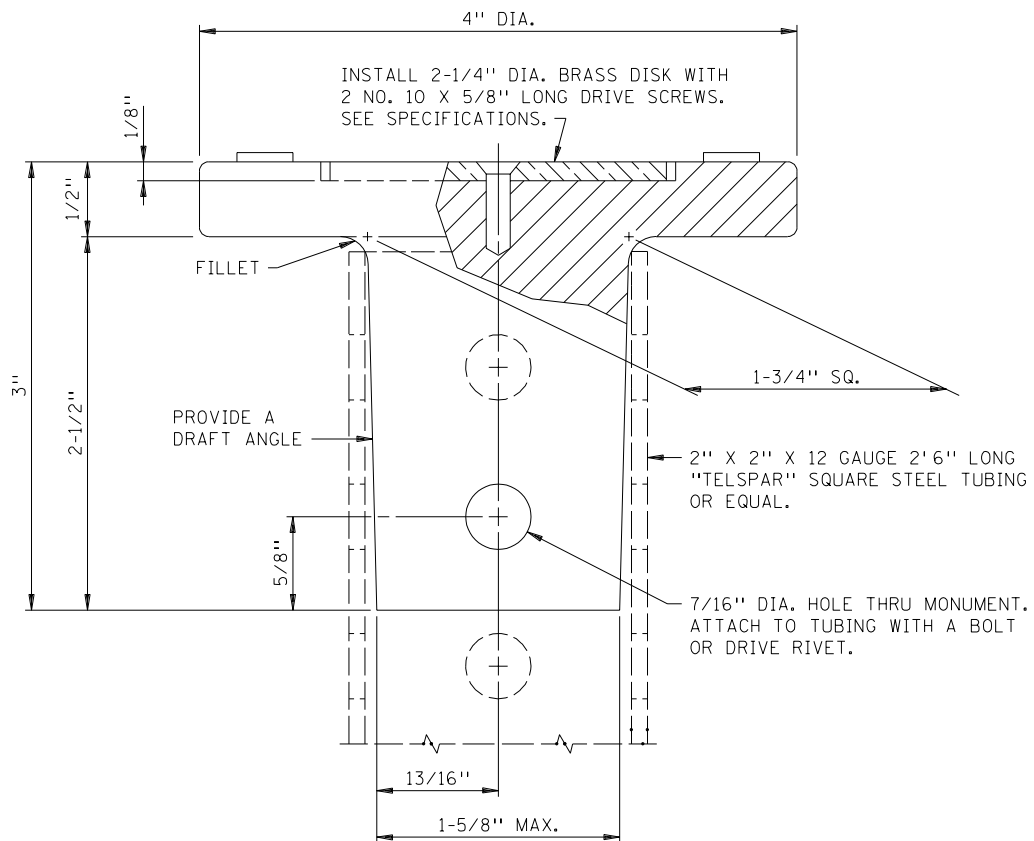


PLAN VIEW



ELEVATION

APPROVED Nov. 16, 1981

*R. H. Sullivan*  
 Assistant Division Director  
 Technical Services

STATE OF MINNESOTA  
 DEPARTMENT OF TRANSPORTATION

PLS (PUBLIC LAND SURVEY)  
 MONUMENT

SPECIFICATION  
 REFERENCE

SEE  
 REVERSE  
 SIDE

STANDARD  
 PLATE  
 NO.

9309G

SPECIFICATIONS FOR  
MINNESOTA DEPARTMENT OF TRANSPORTATION  
PLS (PUBLIC LAND SURVEY) MONUMENT  
STANDARD PLATE 9309

IRON MONUMENT

MATERIAL AND CASTING

THE MONUMENT SHALL BE MADE OF GRAY IRON. THE CASTING SHALL CONFORM TO THE REQUIREMENTS OF ASTM A 48, (MN/DOT SPEC. 3321) CLASS 35B CAST IRON.

FINISH

THE SURFACES SHALL BE SMOOTH AND CLEAR OF ALL SHARP EDGES.

BRASS DISK

MATERIAL

THE BRASS DISK SHALL BE MADE OF 1/8 IN. THICK X 2-1/2 IN. DIA. YELLOW BRASS OR SILICON BRASS, TO MEET THE REQUIREMENTS OF ASTM B 36 (MN/DOT SPEC. 3331) FOR ALLOY 260 OR 268.

FINISH

THE SURFACE OF THE DISK MUST BE SMOOTH AND FREE OF MARKINGS, WITH NO SHARP EDGES. DRILL 2 COUNTERSUNK 7/32 IN. DIA. HOLES OPPOSITE AND 3/4 IN. FROM CENTER OF DISK.

ASSEMBLY

BEFORE DELIVERY, THE BRASS DISK SHALL BE SECURELY FASTENED TO THE CASTING BY 2 NO. 10 X 3/8 IN. LONG BRASS DRIVE SCREWS. DRIVE SCREWS SHALL BE SET FLUSH WITH THE TOP OF THE BRASS DISK WHEN INSTALLED.