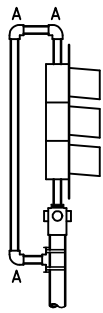
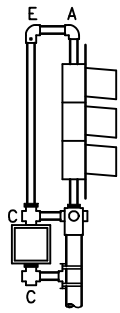


TYPE 1A



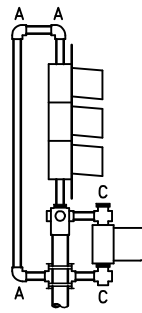
10 FT. SIGNAL PEDESTAL
ONE WAY SIGNAL

TYPE 1B

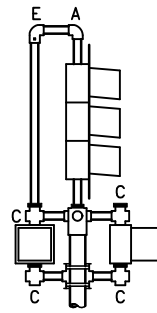
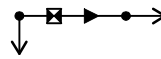


10 FT. SIGNAL PEDESTAL
ONE WAY SIGNAL
1 - PEDESTRIAN SIGNAL FACE

TYPE 1C

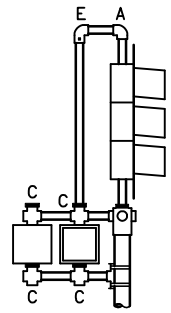
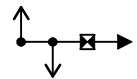


TYPE 1D

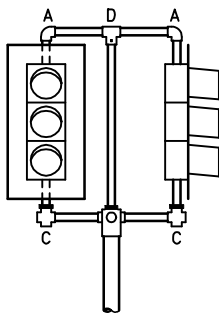
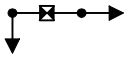


10 FT. SIGNAL PEDESTAL
ONE WAY SIGNAL
2 - PEDESTRIAN SIGNAL FACES

TYPE 1E

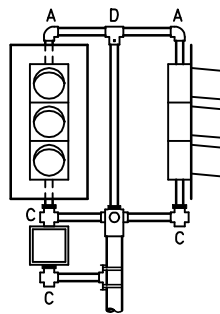
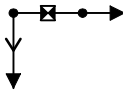


TYPE 2A



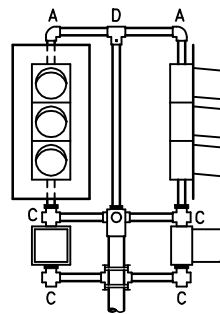
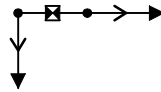
10 FT. SIGNAL PEDESTAL
TWO WAY SIGNAL

TYPE 2B



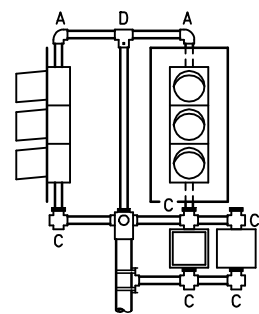
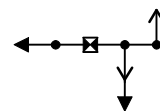
10 FT. SIGNAL PEDESTAL
TWO WAY SIGNAL
1 - PEDESTRIAN SIGNAL FACE

TYPE 2C

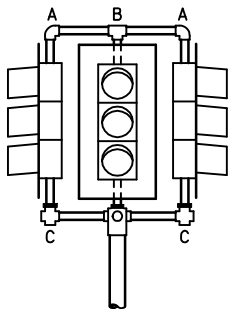
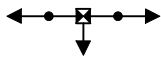


10 FT. SIGNAL PEDESTAL
TWO WAY SIGNAL
2 - PEDESTRIAN SIGNAL FACES

TYPE 2D

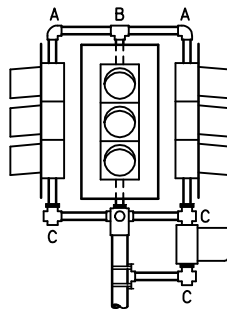
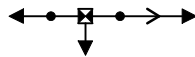


TYPE 3A



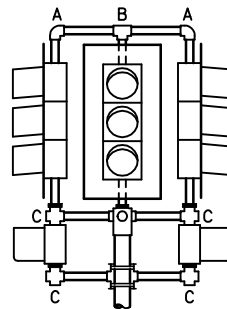
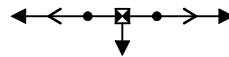
10 FT. SIGNAL PEDESTAL
THREE WAY SIGNAL

TYPE 3B



10 FT. SIGNAL PEDESTAL
THREE WAY SIGNAL
1 - PEDESTRIAN SIGNAL FACE

TYPE 3C



10 FT. SIGNAL PEDESTAL
THREE WAY SIGNAL
2 - PEDESTRIAN SIGNAL FACES

NOTES:

1. SEE SHEET 3 FOR LEGEND OF SYMBOLS, PEDESTAL SLIPFITTER COLLAR DETAIL AND NOTES.
2. SIGNAL PEDESTAL DIMENSIONS SHOWN ARE SHAFT LENGTHS.

APPROVED MAY 22, 2009

STATE DESIGN ENGINEER

STATE OF MINNESOTA
DEPARTMENT OF TRANSPORTATION

TRAFFIC SIGNAL BRACKETING
(PEDESTAL MOUNTED)

SPECIFICATION
REFERENCE

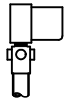
2565

STANDARD
PLATE
NO.

8111E

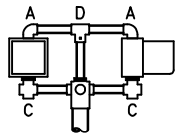
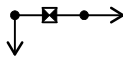
1 OF 3

TYPE 4A



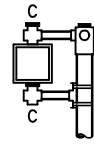
8 FT. SIGNAL PEDESTAL
1 - PEDESTRIAN
SIGNAL FACE

TYPE 4B



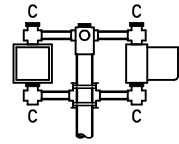
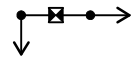
8 FT. SIGNAL PEDESTAL
2 - PEDESTRIAN
SIGNAL FACES

TYPE 4C



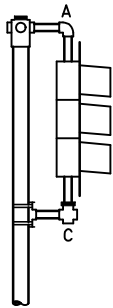
9 FT. SIGNAL PEDESTAL
1 - PEDESTRIAN
SIGNAL FACES

TYPE 4D



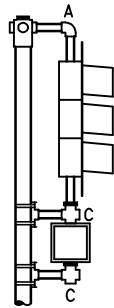
9 FT. SIGNAL PEDESTAL
2 - PEDESTRIAN
SIGNAL FACES

TYPE 5A



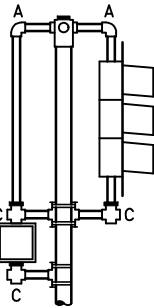
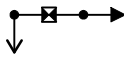
13 FT. SIGNAL PEDESTAL
ONE WAY SIGNAL

TYPE 5B

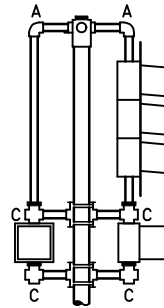
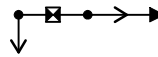


13 FT. SIGNAL PEDESTAL
ONE WAY SIGNAL
1 - PEDESTRIAN SIGNAL FACE

TYPE 5C

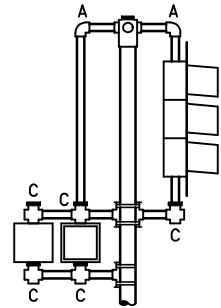
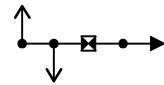


TYPE 5D

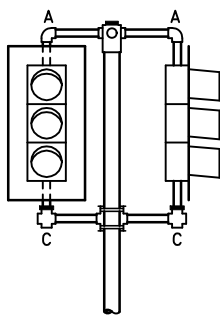
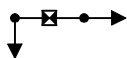


13 FT. SIGNAL PEDESTAL
ONE WAY SIGNAL
2 - PEDESTRIAN SIGNAL FACES

TYPE 5E

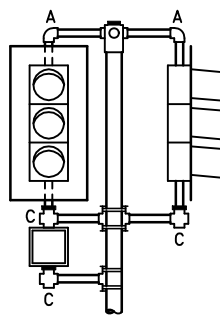
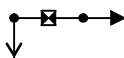


TYPE 6A



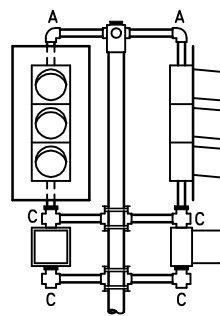
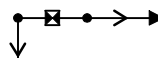
13 FT. SIGNAL PEDESTAL
TWO WAY SIGNAL

TYPE 6B



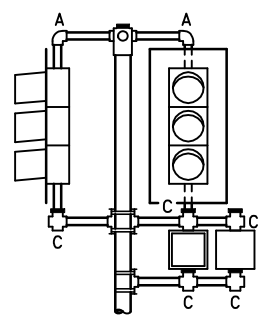
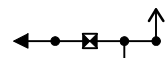
13 FT. SIGNAL PEDESTAL
TWO WAY SIGNAL
1 - PEDESTRIAN SIGNAL FACE

TYPE 6C



13 FT. SIGNAL PEDESTAL
TWO WAY SIGNAL
2 - PEDESTRIAN SIGNAL FACES

TYPE 6D



NOTES:

1. SEE SHEET 3 FOR LEGEND OF SYMBOLS, PEDESTAL SLIPFITTER COLLAR DETAIL AND NOTES.
2. SIGNAL PEDESTAL DIMENSIONS SHOWN ARE SHAFT LENGTHS.
3. SHAFT LENGTH FOR TYPE 5, 6 AND 7 (5 SECTION) INDICATIONS ARE 15'.

APPROVED MAY 22, 2009

STATE DESIGN ENGINEER

STATE OF MINNESOTA
DEPARTMENT OF TRANSPORTATION

TRAFFIC SIGNAL BRACKETING
(PEDESTAL MOUNTED)

SPECIFICATION
REFERENCE

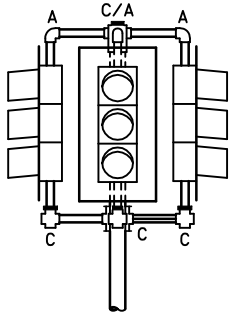
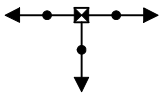
2565

STANDARD
PLATE
NO.

8111E

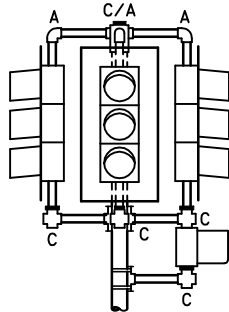
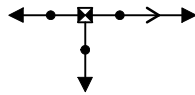
2 OF 3

TYPE 7A



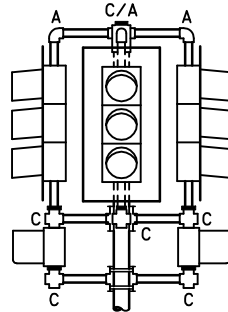
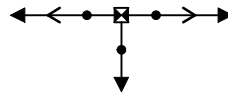
13 FT. SIGNAL PEDESTAL
THREE WAY SIGNAL

TYPE 7B



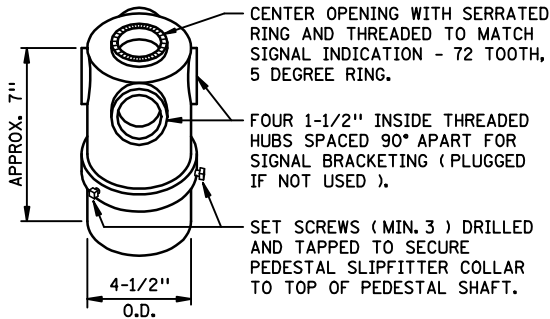
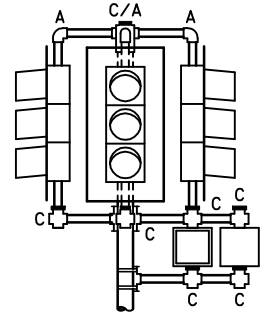
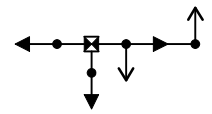
13 FT. SIGNAL PEDESTAL
THREE WAY SIGNAL
1 - PEDESTRIAN SIGNAL FACE

TYPE 7C



13 FT. SIGNAL PEDESTAL
THREE WAY SIGNAL
2 - PEDESTRIAN SIGNAL FACES

TYPE 7D



PEDESTAL SLIPFITTER COLLAR

LEGEND OF SYMBOLS

	TRAFFIC SIGNAL PEDESTAL
	SIGNAL FACE
	PEDESTRIAN INDICATIONS
	PEDESTAL SLIPFITTER COLLAR
	POLE MOUNTING BRACKET
	PLANS SYMBOL (TYPICAL)
	ELBOW, TEE OR CROSS (TOP VIEW OF BRACKETING)
	1-1/2" IRON PIPE SIGNAL BRACKET
	90° ELBOW THREADED INSIDE BOTH ENDS
	TEE THREADED INSIDE ALL ENDS
	CROSS - THREADED INSIDE ALL ENDS, ONE END SERRATED
	TEE - THREADED INSIDE TWO ENDS - CENTER SLIP FIT (NO THREADS - SET SCREW)
	90° ELBOW - THREADED INSIDE ONE END - OTHER END SLIP FIT (NO THREADS - SET SCREW)

NOTES:

1. PEDESTAL MOUNTING OF SIGNAL FACES AND/OR PEDESTRIAN INDICATIONS WILL BE INDICATED IN THE PLANS OR SPECIAL PROVISIONS ACCORDING TO TYPE. THE NOTATION "TYPE 1D" INDICATES A ONE-WAY VEHICLE SIGNAL FACE AND 2-SETS PEDESTRIAN INDICATIONS PEDESTAL MOUNTED AND UTILIZING THE PIPE FITTINGS AND BRACKETING SHOWN IN THIS PLATE.
2. ALL MOUNTINGS SHOWN ARE TYPICAL, SUBJECT TO MINOR REVISIONS.
3. NUMBER OF SIGNAL INDICATIONS PER SIGNAL FACE SHALL BE AS REQUIRED IN THE PLANS OR SPECIAL PROVISIONS.
4. BACKGROUND SHIELDS SHALL BE PROVIDED ON ALL SIGNAL FACES.
5. LENGTH OF SIGNAL BRACKETS SHALL BE SUFFICIENT TO ROTATE SIGNAL FACES FOR PROPER AIMING, WITHOUT CUTTING OR REMOVING BACKGROUND SHIELDS. PEDESTRIAN INDICATIONS SHALL BE ADJUSTABLE 360 DEGREES.
6. BOTTOMS OF BACKGROUND SHIELDS ON ONE-WAY SIGNAL FACES SHALL BE SIZED AND ATTACHED TO THE SATISFACTION OF THE ENGINEER.
7. POLE MOUNTING BRACKETS SHALL BE 1-1/2" HORIZONTAL THREADED HUBS ATTACHED TO THE PEDESTAL BY MINIMUM 3/4" WIDE STAINLESS STEEL STRAPS OR SHALL BE ORNAMENTAL TYPE POLE CLAMPS.
8. BOTTOMS OF LOWER VEHICLE SIGNAL INDICATIONS OF A TWO-WAY OR THREE-WAY SIGNAL SHALL BE AT THE SAME ELEVATION.
9. PIPE FITTINGS (ELBOWS, TEES AND CROSSES) AND PEDESTAL SLIP FITTER COLLARS SHALL BE MALLEABLE IRON OR ANODIZED ALUMINUM. UNUSED OPENINGS SHALL BE PLUGGED WITH APPROPRIATE TYPE ORNAMENTAL THREADED PIPE CAPS. THE SERRATED END OF A PIPE FITTING SHALL BE 72 TOOTH, 5 DEGREE RING MATCHING THE RING OF THE SIGNAL OR PEDESTRIAN INDICATION.
10. WHEN MALLEABLE IRON IS UTILIZED, ALL SIGNAL BRACKETS, PIPE FITTINGS AND CAPS, POLE MOUNTING BRACKETS, AND ORNAMENTAL TYPE POLE CLAMPS SHALL BE PAINTED WITH AN APPROVED METAL PRIMER PER SPEC 3520, AND TWO (2) COATS OF APPROVED PAINT PER SPEC 3532. WHEN ALUMINUM IS UTILIZED, IT MUST BE ANODIZED ALUMINUM.
11. MUST PROVIDE ALL APPROPRIATE LOCK NUTS, NIPPLES, GASKETS, ETC., NECESSARY TO SECURELY FASTEN SIGNAL AND PEDESTRIAN INDICATIONS.
12. BRUSH-ON ANTI-SEIZE COMPOUND MUST BE USED ON ALL THREADED FITTINGS DURING ASSEMBLY.
13. SIGNAL PEDESTAL DIMENSIONS SHOWN ARE SHAFT LENGTHS.
14. SHAFT LENGTH FOR TYPE 5, 6, AND 7 (5 SECTION) INDICATIONS ARE 15'.

APPROVED MAY 22, 2009

Milakus
STATE DESIGN ENGINEER

STATE OF MINNESOTA
DEPARTMENT OF TRANSPORTATION

TRAFFIC SIGNAL BRACKETING
(PEDESTAL MOUNTED)

SPECIFICATION
REFERENCE

2565

STANDARD
PLATE
NO.

8111E

3 OF 3