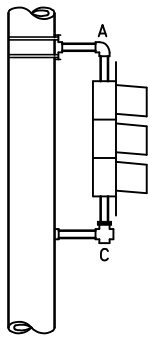
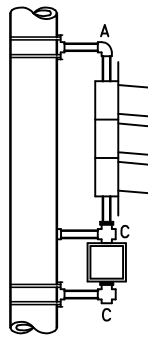


TYPE 10A



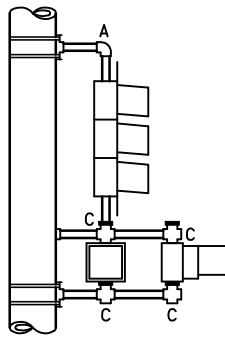
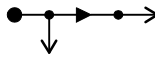
ONE WAY SIGNAL

TYPE 10B



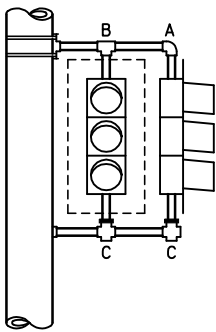
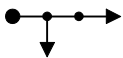
ONE WAY SIGNAL
1-SET PEDESTRIAN
INDICATIONS

TYPE 10C



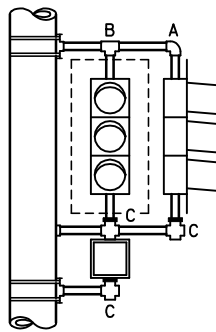
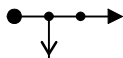
ONE WAY SIGNAL
2-SETS PEDESTRIAN
INDICATIONS

TYPE 20A



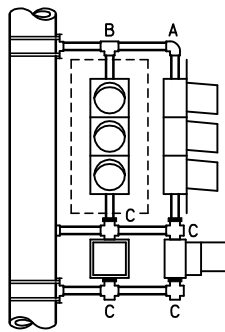
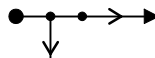
TWO WAY SIGNAL

TYPE 20B



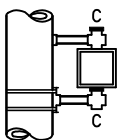
TWO WAY SIGNAL
1-SET PEDESTRIAN
INDICATIONS

TYPE 20C



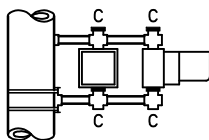
TWO WAY SIGNAL
2-SETS PEDESTRIAN
INDICATIONS

TYPE 30A

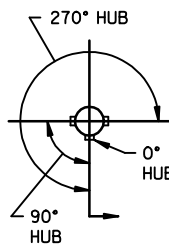


1-SET
PEDESTRIAN
INDICATIONS

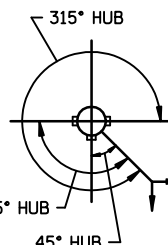
TYPE 30B



2-SETS
PEDESTRIAN
INDICATIONS



TYPE A
MAST ARM
POLE



TYPE B
MAST ARM
POLE

HUB LOCATIONS
FOR MAST ARM POLES

●	TRAFFIC SIGNAL MAST ARM POLE
→	SIGNAL FACE
→	PEDESTRIAN INDICATIONS
	1-1/2" HALF COUPLING WELDED IN POLE
⌋	POLE MOUNTING BRACKET
● ↓ →	PLANS SYMBOL (TYPICAL)
—●—	ELBOW OR TEE (TOP VIEW OF BRACKETING)
===	1-1/2" IRON PIPE SIGNAL BRACKET
⌋ A	90° ELBOW THREADED INSIDE BOTH ENDS
⌋ B	TEE THREADED INSIDE ALL ENDS
⌋ C	CROSS - THREADED INSIDE ALL ENDS, ONE END SERRATED

NOTES:

- POLE MOUNTING OF SIGNAL FACES AND/OR PEDESTRIAN INDICATIONS WILL BE INDICATED IN THE PLANS OR SPECIAL PROVISIONS ACCORDING TO TYPE. THE NOTATION "TYPE 10B-POLE MOUNTED ___°" INDICATES A ONE-WAY VEHICLE SIGNAL FACE AND 1-SET PEDESTRIAN INDICATIONS POLE MOUNTED AT THE ANGLE SPECIFIED AND UTILIZING THE PIPE FITTINGS AND BRACKETING SHOWN IN THIS PLATE.
- ALL MOUNTINGS SHOWN ARE TYPICAL, SUBJECT TO MINOR REVISIONS.
- NUMBER OF SIGNAL INDICATIONS PER SIGNAL FACE SHALL BE AS REQUIRED IN THE PLANS OR SPECIAL PROVISIONS.
- LENGTH OF SIGNAL BRACKETS SHALL BE SUFFICIENT TO ROTATE SIGNAL FACES FOR PROPER AIMING, WITHOUT CUTTING OR REMOVING BACKGROUND SHIELDS. PEDESTRIAN INDICATIONS SHALL BE ADJUSTABLE 360 DEGREES.
- POLE MOUNTING BRACKETS SHALL BE 1-1/2" DIA. HORIZONTAL THREADED HUBS ATTACHED TO POLE BY MIN. 3/4" WIDE STAINLESS STEEL STRAPS.
- BOTTOMS OF LOWER VEHICLE SIGNAL INDICATIONS OF A TWO-WAY SIGNAL SHALL BE AT THE SAME ELEVATION.
- BACKGROUND SHIELDS SHALL BE PROVIDED ON ALL SIGNAL FACES.
- PIPE FITTINGS (ELBOWS, TEES AND CROSSES) SHALL BE MALLEABLE IRON OR ANODIZED ALUMINUM. UNUSED OPENINGS SHALL BE PLUGGED WITH APPROPRIATE TYPE ORNAMENTAL THREADED PIPE CAPS. THE SERRATED END OF A PIPE FITTING SHALL BE 72 TOOTH, 5 DEG. RING MATCHING THE RING OF THE SIGNAL INDICATION.
- WHEN MALLEABLE IRON IS UTILIZED, ALL SIGNAL BRACKETS, PIPE FITTINGS AND CAPS, AND POLE MOUNTING BRACKETS SHALL BE PAINTED WITH AN APPROVED METAL PRIMER PER SPEC 3520, AND TWO (2) COATS OF APPROVED PAINT PER SPEC. 3532 OR WHEN ALUMINUM IS UTILIZED, IT MUST BE ANODIZED ALUMINUM.
- MUST PROVIDE ALL APPROPRIATE LOCK NUTS, NIPPLES, GASKETS, ETC., NECESSARY TO SECURELY FASTEN SIGNAL AND PEDESTRIAN INDICATIONS.
- WHEN MOUNTING SIGNAL FACES AND/OR PEDESTRIAN INDICATIONS ON STREET LIGHT POLES, SIGN TRUSS POLES, SPECIAL MAST ARM POLES OR WOOD POLES, THE SAME BASIC BRACKETING SHOWN ON THIS PLATE SHALL APPLY.
- BRUSH-ON ANTI-SEIZE COMPOUND MUST BE USED ON EACH THREADED FITTING DURING ASSEMBLY.

APPROVED MAY 22, 2009

Milakus
STATE DESIGN ENGINEER

STATE OF MINNESOTA
DEPARTMENT OF TRANSPORTATION

TRAFFIC SIGNAL BRACKETING
(POLE MOUNTED)

SPECIFICATION
REFERENCE

2565

STANDARD
PLATE
NO.

8110E