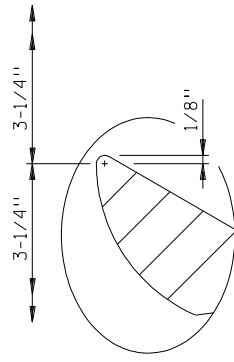
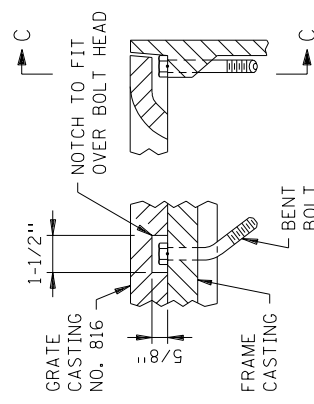


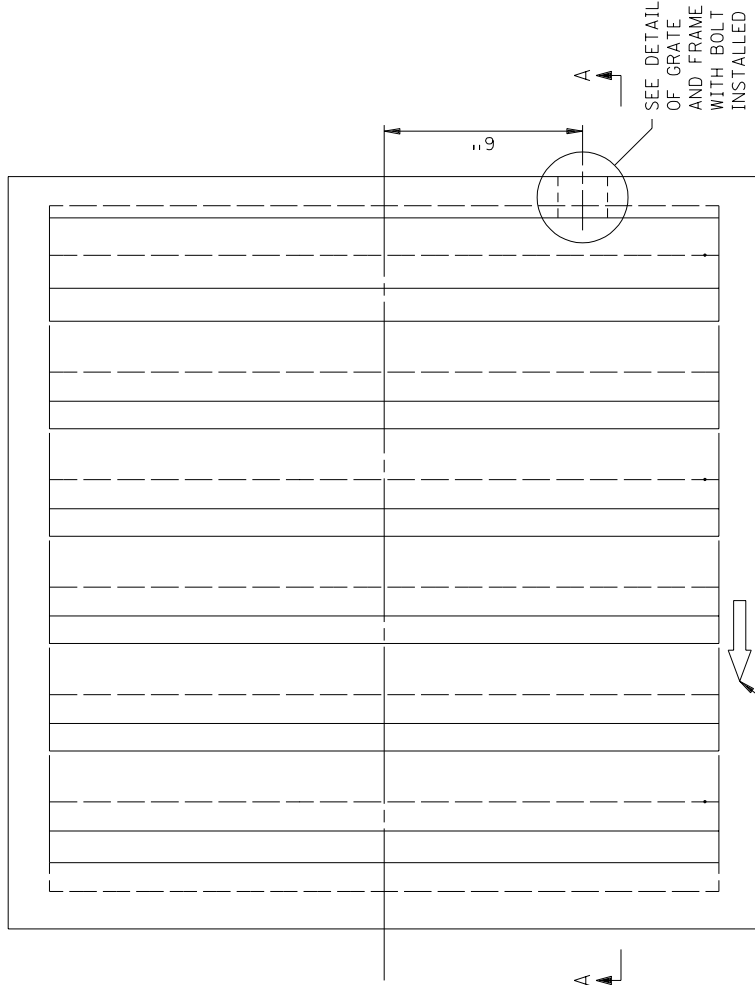
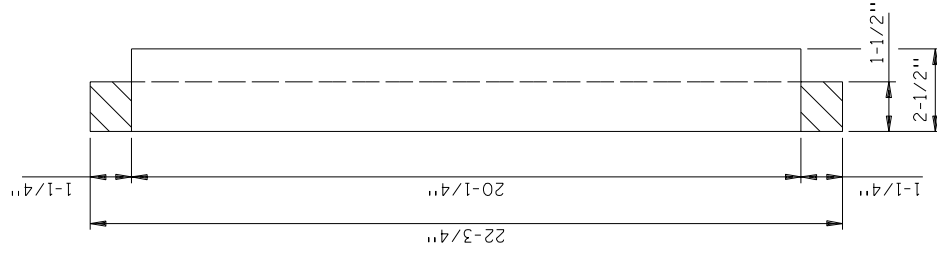
CORNER DETAIL



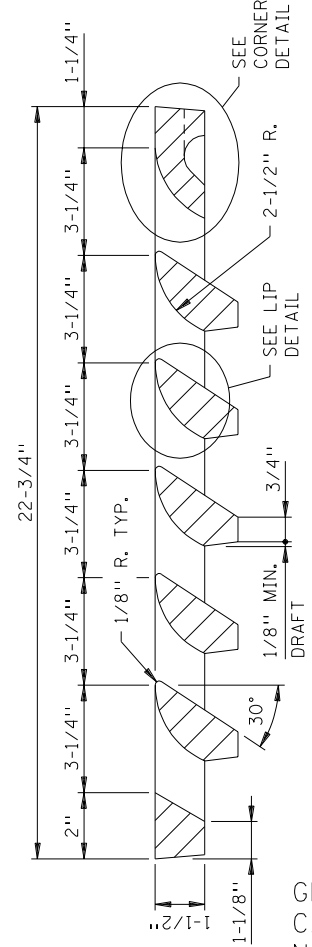
LIP DETAIL



VIEW SECTION C-C THRU FRAME GRATE AND FRAME WITH BOLT INSTALLED



TOP VIEW



SECTION A-A

NOTES:  
 THIS GRATE IS TO BE USED WITH CATCH BASIN FRAME CASTING NO. 802A OR 805.  
 GRATE CASTING 816 IS BICYCLE SAFE WHEN INSTALLED IN CORRECT POSITION. (NOTCH PROVIDED TO FIT OVER BOLT HEAD IN FRAME TO PREVENT WRONG ALIGNMENT OF VANES)  
 ① INSTALL GRATE WITH ARROW IN DIRECTION OF FLOW.

APPROVED Oct. 10, 1979  
  
 Director  
 Construction and Engineering Development

STATE OF MINNESOTA  
 DEPARTMENT OF TRANSPORTATION

CATCH BASIN GRATE CASTING

SPECIFICATION REFERENCE

2506

STANDARD PLATE NO.

4154B

GRATE CASTING NO. 816