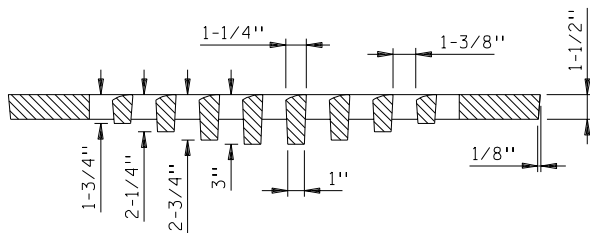
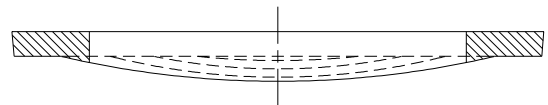


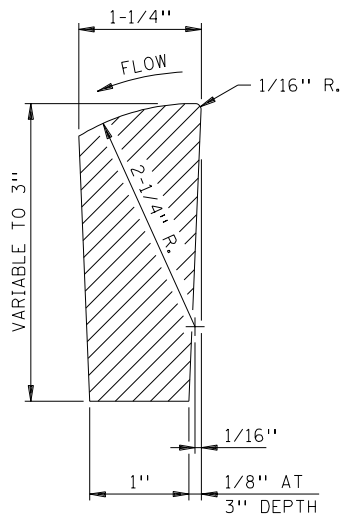
TOP VIEW



SECTION A-A



SECTION B-B



SECTION C-C

NOTES:

THIS GRATE IS TO BE USED WITH
CATCH BASIN FRAME CASTING NO. 802.

- ① INSTALL GRATE WITH ARROW ON CURB
SIDE OF BASIN AND IN DIRECTION OF FLOW.

GRATE CASTING NO. 811

APPROVED Oct. 1, 1966
W. A. Ebern
**ASSISTANT COMMISSIONER
ENGINEERING STANDARDS**

STATE OF MINNESOTA
DEPARTMENT OF TRANSPORTATION

GRATE CASTING FOR CATCH BASIN
SQUARE TYPE

SPECIFICATION
REFERENCE

2506

STANDARD
PLATE
NO.

4151B