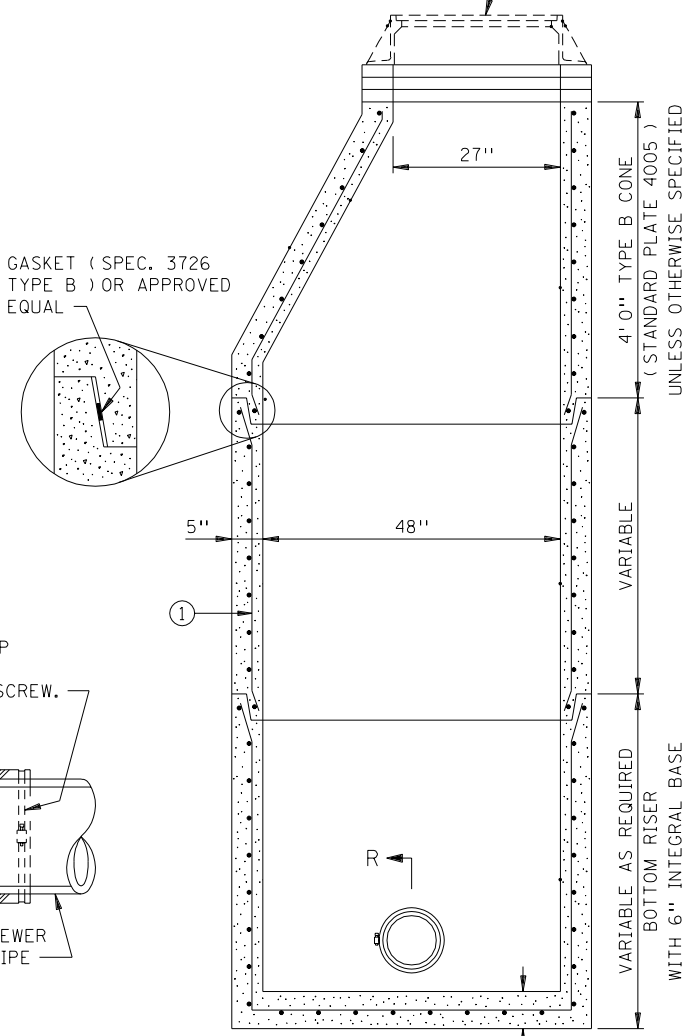
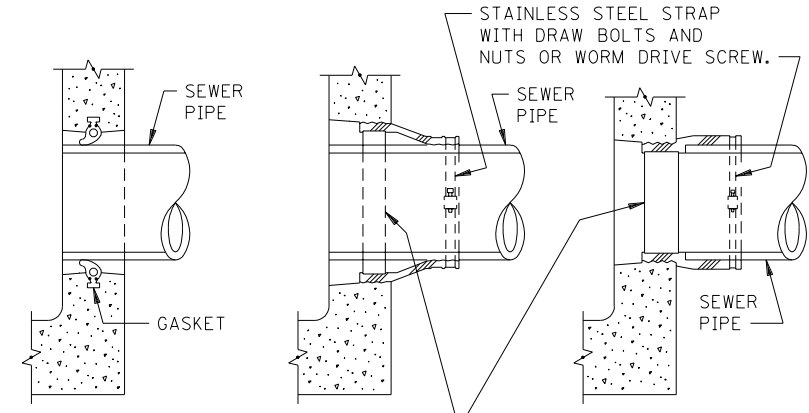


SECTION R-R

REFER TO PLANS FOR CASTINGS REQUIRED. USE ADJUSTING RINGS WHERE NECESSARY. SEE STANDARD PLATE 4010. ②



SECTION THRU TYPICAL MANHOLE



INTEGRALLY CAST COMPRESSION GASKET SEAL  
 POSITIVE MECHANICAL SEALS FLEXIBLE SLEEVE  
 INTERNAL EXPANDING LOCKING BAND (NON-MAGNETIC CORROSION RESISTANT STEEL)

WATER TIGHT SEALS

**SLEEVE NOTES:**  
 SHIM OR ADAPTER FOR "NON-STANDARD" PIPE ALLOWABLE.  
 FLEXIBLE SLEEVE SHALL BE NEOPRENE MATERIAL MEETING THE REQUIREMENTS OF ASTM C-443 OR THE FOLLOWING ELASTOMER EPDM:  
 TENSILE STRENGTH 1200 P.S.I. MIN. (DIE C, ASTM D 412)  
 ELONGATION AT RUPTURE 350% MIN. (DIE C, ASTM D 412)  
 COMPRESSION SET 25% MAX. (22 HRS. AT 70° C, ASTM D 395, METHOD B)  
 DUROMETER 50 ± 5 (ASTM D 2240)  
 FLEXIBLE SLEEVE DIMENSIONS SHALL CONFORM TO PRODUCERS STANDARDS.

**MANHOLE NOTES:**  
 REFER TO PLANS FOR STEP REQUIREMENTS.  
 ① REINFORCING SHALL BE A MINIMUM OF A SINGLE LINE WIRE FABRIC HAVING AN AREA OF NOT LESS THAN 0.12 SQ. IN. PER FT. OF HEIGHT.  
 ② CASTING AND PRECAST RINGS ALTERNATE (WHEN REQUIRED) SHALL BE SET ON A FULL MORTAR BED.

APPROVED April 2, 1979  
  
 Director  
 Construction and Engineering Development

STATE OF MINNESOTA  
 DEPARTMENT OF TRANSPORTATION  
 PRECAST MECHANICAL JOINT  
 SEWER MANHOLE

SPECIFICATION REFERENCE  
 2503  
 2506  
 REVISED 7-22-97

STANDARD PLATE NO.  
 4007C