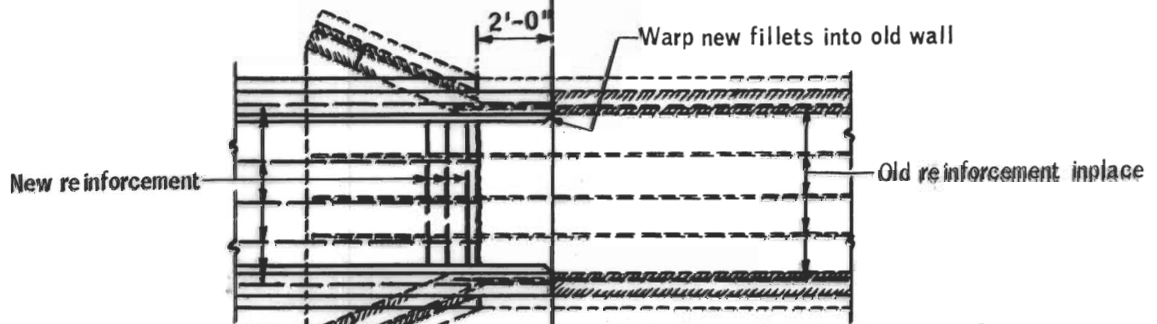
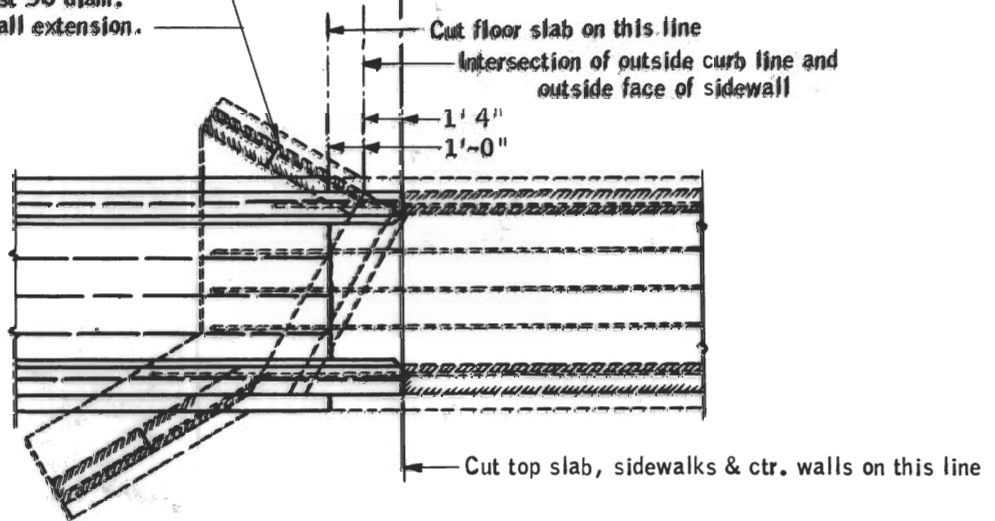


**PART LONGITUDINAL SECTION  
FOR ALL CULVERTS**



**PART SECTION ABOVE FLOOR  
FOR SQUARE CULVERTS**

Note: Remove old wings as necessary to provide clearance for construction of sidewall extension. Cut old steel to provide a lap of at least 50 diam. and bend bars into sidewall extension.



**PART SECTION ABOVE FLOOR  
FOR SINGLE BARREL SKEWED CULVERTS  
(SEE SHEET 2 FOR MULTIBARREL CULVERTS)**

Note: See Standard "C" type culvert plans for details not shown on these sheets

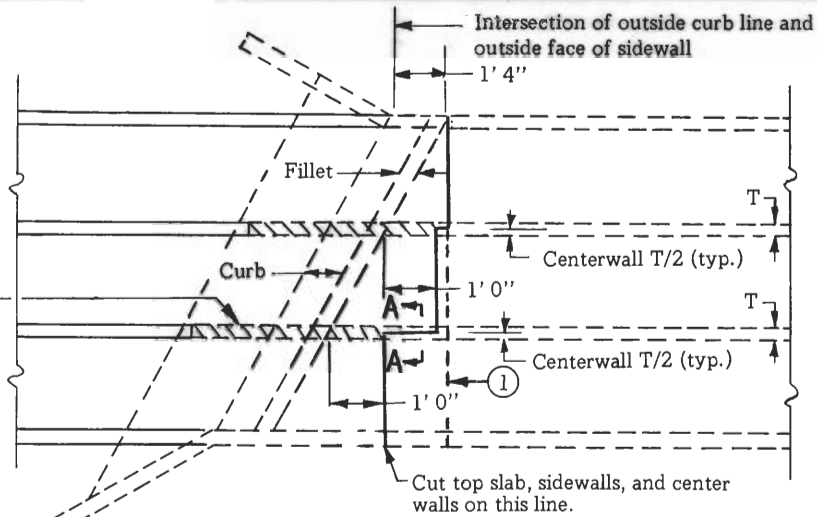
APPROVED Sept. 13, 1977  
*V. S. Peterson*  
Director  
Materials, Research and Standards

STATE OF MINNESOTA  
DEPARTMENT OF TRANSPORTATION  
**CONNECTION BET. EXISTING CULV. &  
NEW "C" CULV. BARREL**  
SINGLE BARREL SECTIONS

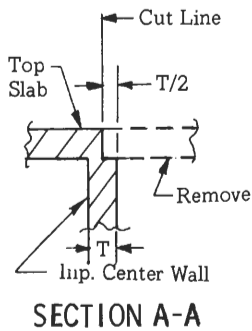
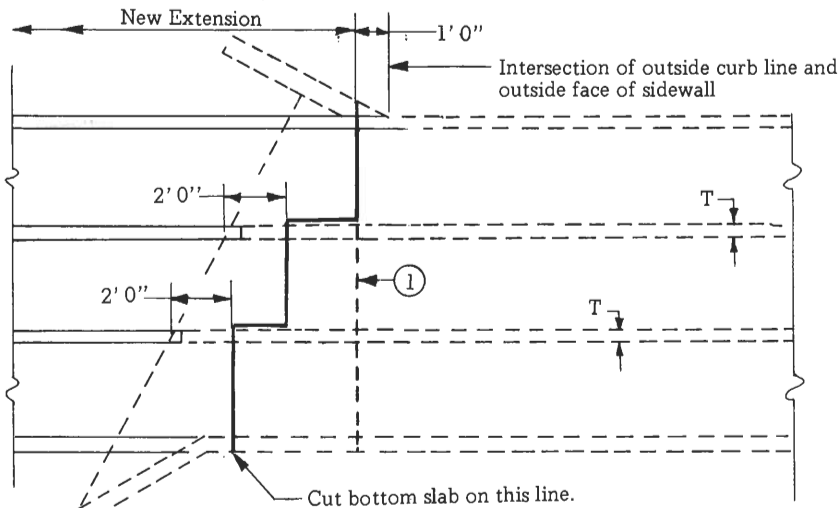
SPECIFICATION  
REFERENCE  
2411

STANDARD  
PLATE  
NO.  
**3065C**  
1 of 2

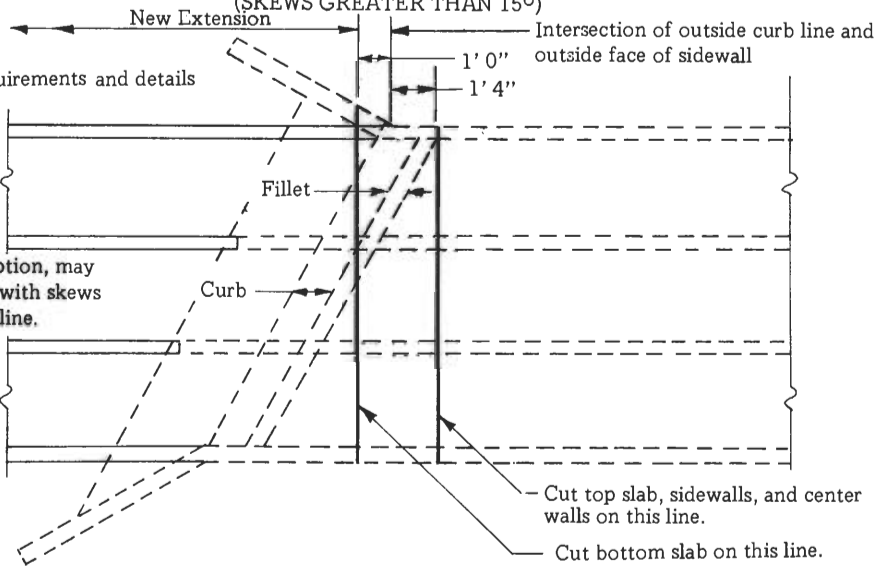
Remove center walls to floor level in hatched area.



**PART SECTION ABOVE FLOOR**  
(SKEWS GREATER THAN 15°)



**PART FLOOR SECTION**  
(SKEWS GREATER THAN 15°)



**PART SECTION ABOVE FLOOR**  
(SKEWS 15° OR LESS)

NOTE:  
See Sheet 1 for reinforcement requirements and details

① The Contractor, at his option, may cut multi-barrel culverts with skews greater than 15° on this line.

APPROVED Sept. 13, 1977

*H. A. [Signature]*  
Director  
Materials, Research and Standards

STATE OF MINNESOTA  
DEPARTMENT OF TRANSPORTATION

**CONNECTION BETWEEN EXISTING CULV. &  
NEW "C" CULV. BARREL  
MULTI-BARREL SECTIONS**

SPECIFICATION  
REFERENCE

2411

STANDARD  
PLATE  
NO.

**3065 C**

2 of 2