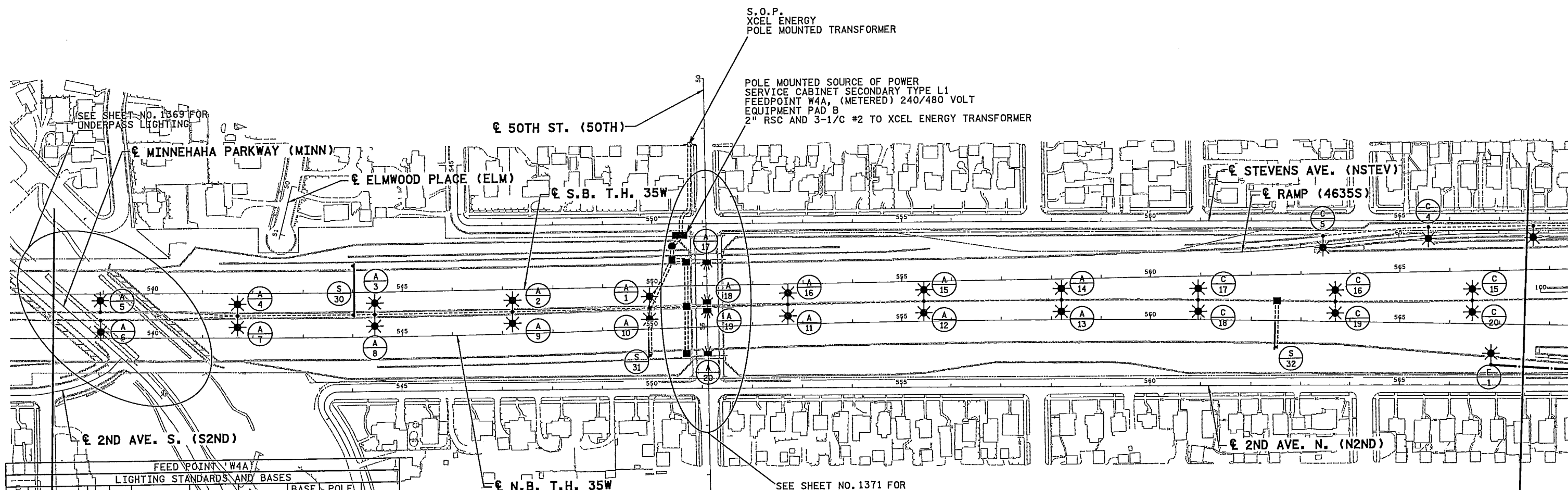
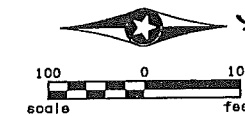


SEE SHEET NO.1324 FOR LEGEND

NOTES:

1. ALL CONDUIT SHALL BE 1 1/2" NMC (UNLESS OTHERWISE NOTED)
2. DIRECT BURIED CABLE SHALL BE ARMORED CABLE WITH 4-1/C #4 CONDUCTORS.
3. ALL DISTRIBUTION CABLE IN CONDUIT SHALL BE 3-1/C #4 WITH 1-1/C #4 GND (UNLESS OTHERWISE NOTED)
4. CONNECTING INPLACE LIGHTING UNITS TO THE NEW LIGHTING CIRCUITS IS INCIDENTAL TO THE CONDUIT & WIRE.
5. ABANDON ASSOCIATED EXISTING CONDUIT IN PLACE.



FEED POINT 'W4A'

LIGHTING STANDARDS AND BASES									
NO.	STATION	LT.	RT.	LOCATION	TYPE	FIXTURE	BASE TYPE	POLE HEIGHT	WALL #
1	459 + 96	X		35W N.B.	9XBD-49	400 W	MED	TYP	N/A
2	547 + 21	X		35W N.B.	9XBD-49	400 W	MED	TYP	N/A
3	544 + 45	X		35W N.B.	9XBD-49	400 W	MED	TYP	N/A
4	541 + 69	X		35W N.B.	9XBD-49	400 W	MED	TYP	N/A
5	538 + 94	X		35W N.B.	9XB-49	400 W	MED	TYP	N/A
6	538 + 95	X		35W N.B.	9XB-49	400 W	MED	TYP	N/A
7	541 + 69	X		35W N.B.	9XBD-49	400 W	MED	TYP	N/A
8	544 + 45	X		35W N.B.	9XBD-49	400 W	MED	TYP	N/A
9	547 + 21	X		35W N.B.	9XBD-49	400 W	MED	TYP	N/A
10	459 + 96	X		35W N.B.	9XBD-49	400 W	MED	TYP	N/A
11	552 + 71	X		35W N.B.	9XBD-49	400 W	MED	TYP	N/A
12	555 + 45	X		35W N.B.	9XBD-49	400 W	MED	TYP	N/A
13	558 + 20	X		35W N.B.	9XBD-49	400 W	MED	TYP	N/A
14	558 + 20	X		35W N.B.	9XBD-49	400 W	MED	TYP	N/A
15	555 + 45	X		35W N.B.	9XBD-49	400 W	MED	TYP	N/A
16	552 + 71	X		35W N.B.	9XBD-49	400 W	MED	TYP	N/A
17	BRIDGE			BRIDGE	L	250 W	N/A	N/A	N/A
18	BRIDGE			BRIDGE	L	250 W	N/A	N/A	N/A
19	BRIDGE			BRIDGE	L	250 W	N/A	N/A	N/A
20	BRIDGE			BRIDGE	L	250 W	N/A	N/A	N/A

FEED POINT 'W4C'

LIGHTING STANDARDS AND BASES									
NO.	STATION	LT.	RT.	LOCATION	TYPE	FIXTURE	BASE TYPE	POLE HEIGHT	WALL #
4	65 + 60	X		4635S	9XB-40	250 W	BAR	25'	RW31
5	63 + 48	X		4635S	9XB-40	250 W	BAR	25'	RW31
15	566 + 44	X		35W N.B.	9XBD-49	400 W	MED	TYP	N/A
16	563 + 69	X		35W N.B.	9XBD-49	400 W	MED	TYP	N/A
17	560 + 94	X		35W N.B.	9XBD-49	400 W	MED	TYP	N/A
18	560 + 94	X		35W N.B.	9XBD-49	400 W	MED	TYP	N/A
19	563 + 69	X		35W N.B.	9XBD-49	400 W	MED	TYP	N/A
20	566 + 44	X		35W N.B.	9XBD-49	400 W	MED	TYP	N/A

FEED POINT 'W4E'

LIGHTING STANDARDS AND BASES									
NO.	STATION	LT.	RT.	LOCATION	TYPE	FIXTURE	BASE TYPE	POLE HEIGHT	WALL #
1	566 + 85		X	35W N.B.	9X-40	250 W	E	35'	N/A

I hereby certify that this plan, specification, or report was prepared by me or under my direct supervision and that I am a duly Licensed Professional Electrical Engineer under the laws of the State of Minnesota.
 Print Name: Brian D. Holt
 Date: 1-9-06 License # 21428

DRAWN BY
J. KRUSE
 DESIGNED BY
J. KRUSE
 CHECKED BY
B. HOLT
 COMM. NO. 0034702



MINNESOTA DEPARTMENT OF TRANSPORTATION SHEET
 LIGHTING PLAN
 S.P. 2782-281 (T.H. 35W)
 MAIN LINE
 1361
 OF
 1681

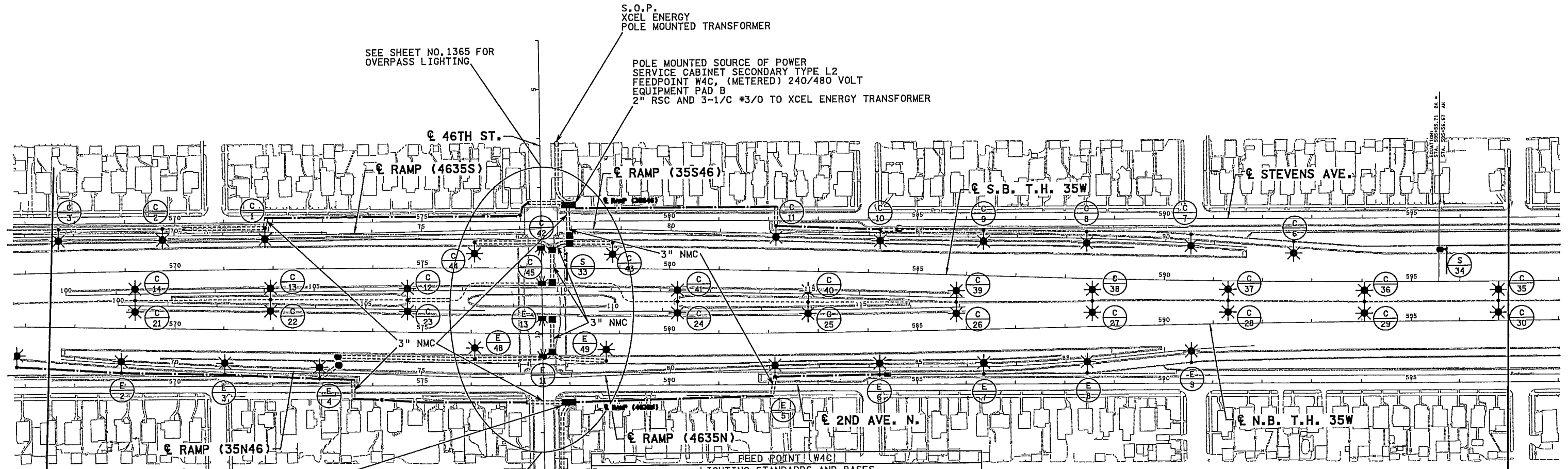
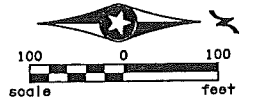
7:02:34 PM 1/11/2006 R:\V\Projects\4702-FNH-MUN\lan\c2782281.LTI.DGN

...VHI-MUN\lan\c2782281.LTI.DGN

SEE SHEET NO.1324 FOR LEGEND

NOTES:

1. ALL CONDUIT SHALL BE 1 1/2" NMC (UNLESS OTHERWISE NOTED)
2. DIRECT BURIED CABLE SHALL BE ARMORED CABLE WITH 4-1/C #4 CONDUCTORS.
3. ALL DISTRIBUTION CABLE IN CONDUIT SHALL BE 3-1/C #4 WITH 1-1/C #4 GND (UNLESS OTHERWISE NOTED)
4. CONNECTING INPLACE LIGHTING UNITS TO THE NEW LIGHTING CIRCUITS IS INCIDENTAL TO THE CONDUIT & WIRE.
5. ABANDON ASSOCIATED EXISTING CONDUIT IN PLACE.



FEED POINT 'W4E'
LIGHTING STANDARDS AND BASES

NO.	STATION	LT.	RT.	LOCATION	TYPE	FIXTURE	BASE TYPE	POLE HEIGHT	WALL #
2	68 + 95		X	35N46	9X-40	250 W	E	TYP	N/A
3	71 + 05		X	35N46	9X-40	250 W	E	TYP	N/A
4	72 + 95		X	35N46	9X-40	250 W	E	TYP	N/A
5	82 + 11		X	4635N	9X-40	250 W	E	TYP	N/A
6	84 + 21		X	4635N	9X-40	250 W	E	TYP	N/A
7	86 + 33		X	4635N	9XB-40	250 W	BAR	35'	RW27
8	88 + 40		X	4635N	9XB-40	250 W	BAR	30'	RW27
9	590 + 54		X	35W N.B.	9XB-40	250 W	BAR	30'	RW27
10	576 + 08		X	35W N.B.	9X-40	250 W	E	TYP	N/A
11	BRIDGE		X	BRIDGE	L	253 W	N/A	N/A	N/A
12	578 + 74		X	35W N.B.	9X-40	250 W	E	TYP	N/A
13	BRIDGE		X	BRIDGE	L	252 W	N/A	N/A	N/A

FEED POINT 'W4C'
LIGHTING STANDARDS AND BASES

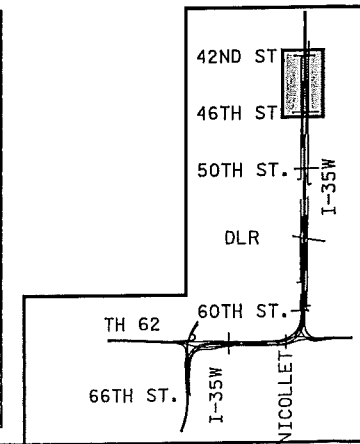
NO.	STATION	LT.	RT.	LOCATION	TYPE	FIXTURE	BASE TYPE	POLE HEIGHT	WALL #
1	71 + 86		X	4635S	9X-40	250 W	E	TYP	N/A
2	69 + 77		X	4635S	9XB-40	250 W	BAR	35'	RW31
3	67 + 69		X	4635S	9XB-40	250 W	BAR	30'	RW31
6	592 + 62		X	35W S.B.	9XB-40	250 W	BAR	25'	RW28
7	90 + 50		X	35S46	9XB-40	250 W	BAR	15'	RW28
8	88 + 40		X	35S46	9XB-40	250 W	BAR	25'	RW28
9	86 + 31		X	35S46	9XB-40	250 W	BAR	30'	RW28
10	84 + 21		X	35S46	9X-40	250 W	E	TYP	N/A
11	82 + 11		X	35S46	9X-40	250 W	E	TYP	N/A
12	574 + 69		X	35W N.B.	9XBD-49	400 W	MED	TYP	N/A
13	571 + 94		X	35W N.B.	9XBD-49	400 W	MED	TYP	N/A
14	569 + 19		X	35W N.B.	9XBD-49	400 W	MED	TYP	N/A
21	569 + 19		X	35W N.B.	9XBD-49	400 W	MED	TYP	N/A
22	571 + 94		X	35W N.B.	9XBD-49	400 W	MED	TYP	N/A
23	574 + 69		X	35W N.B.	9XBD-49	400 W	MED	TYP	N/A
24	580 + 04		X	35W N.B.	9XBD-49	400 W	MED	TYP	N/A
25	582 + 80		X	35W N.B.	9XBD-49	400 W	MED	TYP	N/A
26	585 + 80		X	35W N.B.	9XBD-49	400 W	MED	TYP	N/A
27	588 + 56		X	35W N.B.	9XBD-49	400 W	MED	TYP	N/A

FEED POINT 'W4C'
LIGHTING STANDARDS AND BASES

NO.	STATION	LT.	RT.	LOCATION	TYPE	FIXTURE	BASE TYPE	POLE HEIGHT	WALL #
28	591 + 30		X	35W N.B.	9XBD-49	400 W	MED	TYP	N/A
29	594 + 05		X	35W N.B.	9XBD-49	400 W	MED	TYP	N/A
30	596 + 80		X	35W N.B.	9XBD-49	400 W	MED	TYP	N/A
35	596 + 80		X	35W N.B.	9XBD-49	400 W	MED	TYP	N/A
36	594 + 05		X	35W N.B.	9XBD-49	400 W	MED	TYP	N/A
37	591 + 30		X	35W N.B.	9XBD-49	400 W	MED	TYP	N/A
38	588 + 56		X	35W N.B.	9XBD-49	400 W	MED	TYP	N/A
39	585 + 80		X	35W N.B.	9XBD-49	400 W	MED	TYP	N/A
40	582 + 80		X	35W N.B.	9XBD-49	400 W	MED	TYP	N/A
41	580 + 04		X	35W N.B.	9XBD-49	400 W	MED	TYP	N/A
42	BRIDGE		X	BRIDGE	L	249 W	N/A	N/A	N/A
43	578 + 85		X	35W S.B.	9X-40	250 W	E	TYP	N/A
44	576 + 06		X	35W S.B.	9X-40	250 W	E	TYP	N/A
45	BRIDGE		X	BRIDGE	L	251 W	N/A	N/A	N/A

FEED POINT 'W4C'
LIGHTING STANDARDS AND BASES

NO.	STATION	LT.	RT.	LOCATION	TYPE	FIXTURE	BASE TYPE	POLE HEIGHT	WALL #
14	570								
15	575								
16	575								
17	575								
18	575								
19	575								
20	575								
21	570								
22	575								
23	575								
24	580								
25	585								
26	585								
27	590								
28	590								
29	590								
30	590								
31	590								
32	590								
33	590								
34	590								
35	595								
36	595								
37	595								
38	595								
39	595								
40	595								
41	595								
42	595								
43	595								
44	595								
45	595								



T:\02136 PM 1/11/2006 R:\Proj\2782-281\I-TJ.DGN

NO.	DATE	BY	CHKD	APPR	REVISION

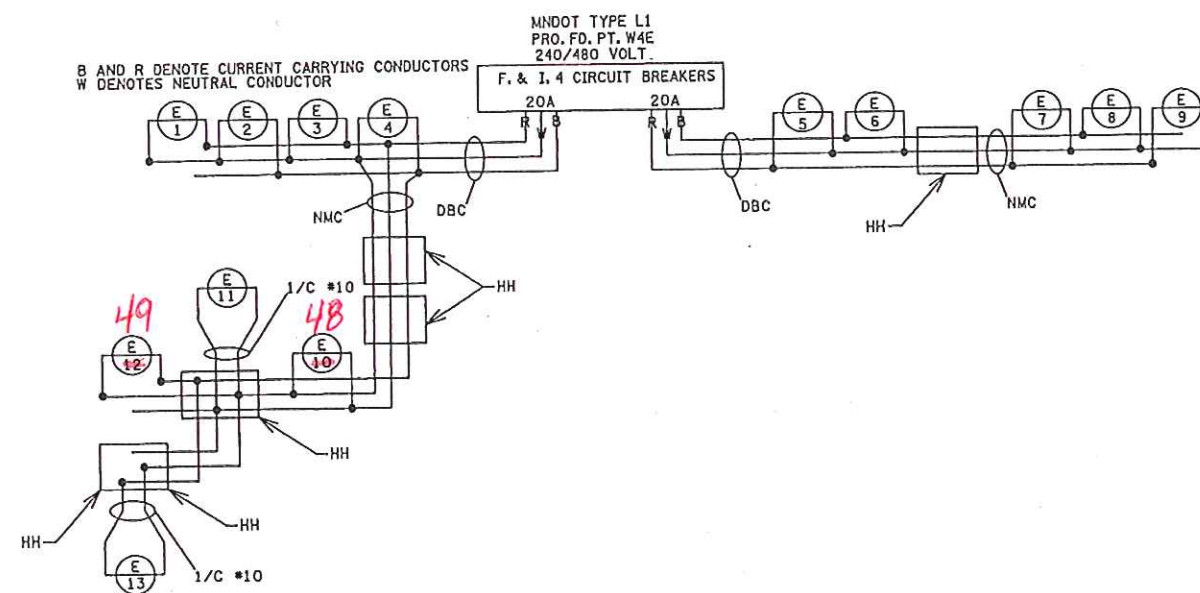
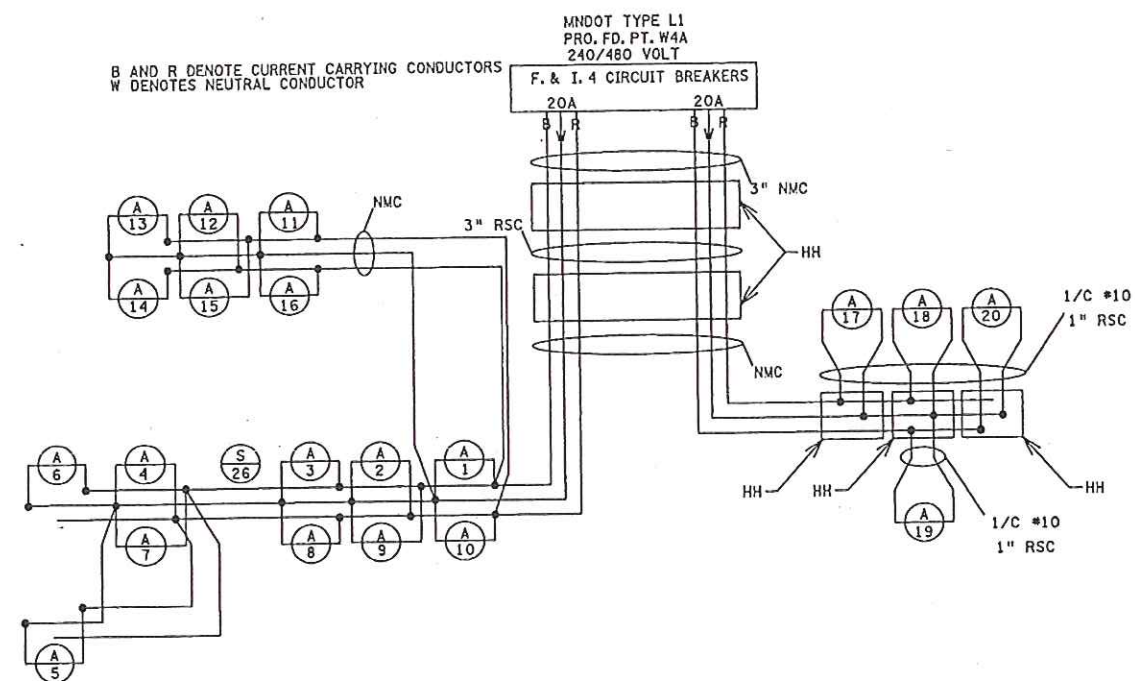
I hereby certify that this plan, specification, or report was prepared by me or under my direct supervision and that I am a duly Licensed Professional Electrical Engineer under the laws of the State of Minnesota.

Print Name: **BRIAN D. HOLT**
Brian D Holt
 Date: **1-9-06** License #: **21428**

DRAWN BY
J. KRUSE
 DESIGNED BY
J. KRUSE
 CHECKED BY
B. HOLT
 COMM. NO. 0034702



WHEN LIGHTS AND SIGNS ARE SHOWN
BUT NOT CONNECTED, THIS SIGNIFIES
A CIRCUIT BEING ROUTED THROUGH
THE BASE BUT NOT TERMINATED THERE.



- NOTES:
1. ALL DISTRIBUTION CABLE IN CONDUIT SHALL BE 3-1/C #4 AND 1-1/C #4 GND (UNLESS OTHERWISE NOTED).
 2. DIRECT BURIED CABLE SHALL BE ARMORED CABLE WITH 4-1/C #4 CONDUCTORS.
 3. ALL CONDUIT SHALL BE 1 1/2" NON-METALLIC CONDUIT (UNLESS OTHERWISE NOTED).

10:59:05 AM
H:\Projects\2782-281\2782-281.dgn

NO	DATE	BY	CKD	APPR	REVISION

I hereby certify that this plan, specification, or report was prepared by me or under my direct supervision and that I am a duly Licensed Professional Electrical Engineer under the laws of the State of Minnesota.

Print Name: **BRIAN D. HOLT**
Brian D. Holt
 Date: 1-9-06 License #: 21428

DRAWN BY
J. KRUSE
 DESIGNED BY
J. KRUSE
 CHECKED BY
B. HOLT
 COMM. NO. 0034702



MINNESOTA DEPARTMENT OF TRANSPORTATION SHEET
 LIGHTING PLAN 1378
 S.P. 2782-281 (T.H. 35W) OF
 WIRING DIAGRAMS 1681