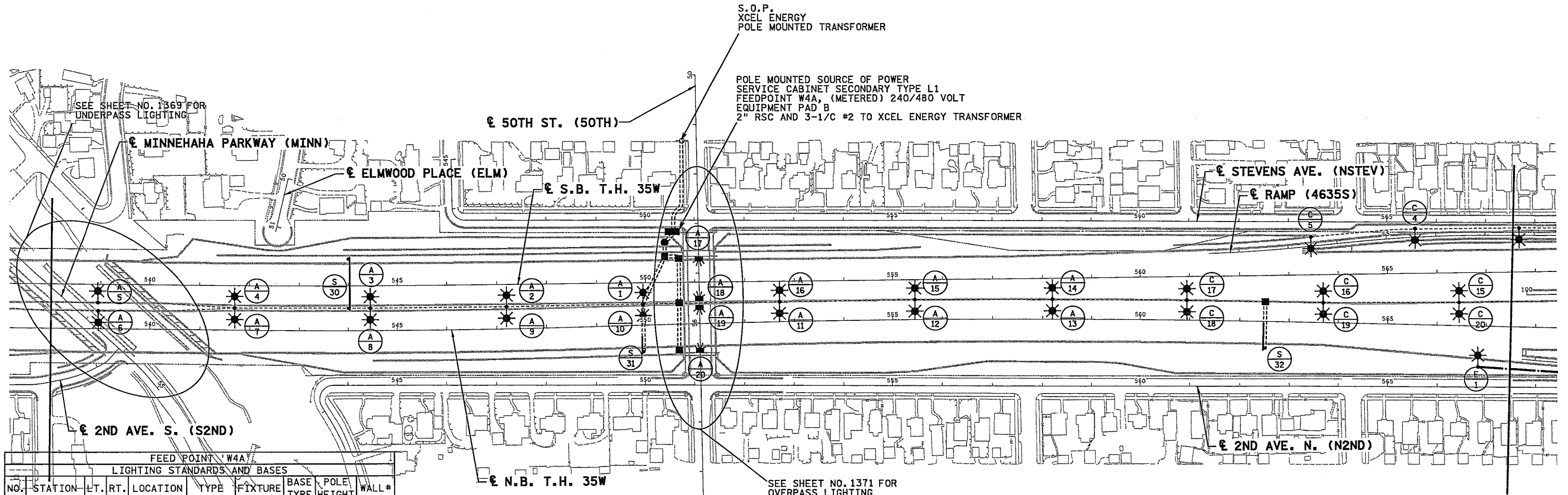
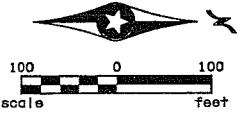


SEE SHEET NO.1324 FOR LEGEND

NOTES:

1. ALL CONDUIT SHALL BE 1 1/2" NMC (UNLESS OTHERWISE NOTED)
2. DIRECT BURIED CABLE SHALL BE ARMORED CABLE WITH 4-1/C #4 CONDUCTORS.
3. ALL DISTRIBUTION CABLE IN CONDUIT SHALL BE 3-1/C #4 WITH 1-1/C #4 GND (UNLESS OTHERWISE NOTED)
4. CONNECTING INPLACE LIGHTING UNITS TO THE NEW LIGHTING CIRCUITS IS INCIDENTAL TO THE CONDUIT & WIRE.
5. ABANDON ASSOCIATED EXISTING CONDUIT IN PLACE.



S.O.P.
XCEL ENERGY
POLE MOUNTED TRANSFORMER

POLE MOUNTED SOURCE OF POWER
SERVICE CABINET SECONDARY TYPE L1
FEEDPOINT W4A, (METERED) 240/480 VOLT
EQUIPMENT PAD B
2" RSC AND 3-1/C #2 TO XCEL ENERGY TRANSFORMER

FEED POINT 'W4A'
LIGHTING STANDARDS AND BASES

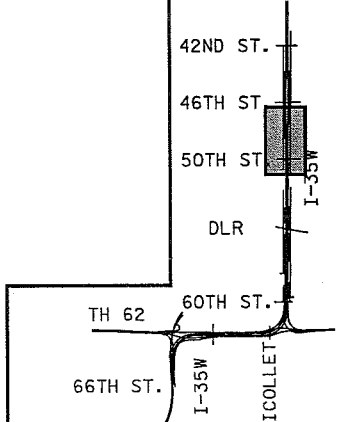
NO.	STATION	LT.	RT.	LOCATION	TYPE	FIXTURE	BASE TYPE	POLE HEIGHT	WALL #
1	459 + 96	X		35W N.B.	9XBD-49	400 W	MED	TYP	N/A
2	547 + 21	X		35W N.B.	9XBD-49	400 W	MED	TYP	N/A
3	544 + 45	X		35W N.B.	9XBD-49	400 W	MED	TYP	N/A
4	541 + 69	X		35W N.B.	9XBD-49	400 W	MED	TYP	N/A
5	538 + 94	X		35W N.B.	9XB-49	400 W	MED	TYP	N/A
6	538 + 95	X		35W N.B.	9XB-49	400 W	MED	TYP	N/A
7	541 + 69	X		35W N.B.	9XBD-49	400 W	MED	TYP	N/A
8	544 + 45	X		35W N.B.	9XBD-49	400 W	MED	TYP	N/A
9	547 + 21	X		35W N.B.	9XBD-49	400 W	MED	TYP	N/A
10	459 + 96	X		35W N.B.	9XBD-49	400 W	MED	TYP	N/A
11	552 + 71	X		35W N.B.	9XBD-49	400 W	MED	TYP	N/A
12	555 + 45	X		35W N.B.	9XBD-49	400 W	MED	TYP	N/A
13	558 + 20	X		35W N.B.	9XBD-49	400 W	MED	TYP	N/A
14	558 + 20	X		35W N.B.	9XBD-49	400 W	MED	TYP	N/A
15	555 + 45	X		35W N.B.	9XBD-49	400 W	MED	TYP	N/A
16	552 + 71	X		35W N.B.	9XBD-49	400 W	MED	TYP	N/A
17	BRIDGE			BRIDGE	L	250 W	N/A	N/A	N/A
18	BRIDGE			BRIDGE	L	250 W	N/A	N/A	N/A
19	BRIDGE			BRIDGE	L	250 W	N/A	N/A	N/A
20	BRIDGE			BRIDGE	L	250 W	N/A	N/A	N/A

FEED POINT 'W4C'
LIGHTING STANDARDS AND BASES

NO.	STATION	LT.	RT.	LOCATION	TYPE	FIXTURE	BASE TYPE	POLE HEIGHT	WALL #
4	65 + 60	X		4635S	9XB-40	250 W	BAR	25'	RW31
5	63 + 48	X		4635S	9XB-40	250 W	BAR	25'	RW31
15	566 + 44	X		35W N.B.	9XBD-49	400 W	MED	TYP	N/A
16	563 + 69	X		35W N.B.	9XBD-49	400 W	MED	TYP	N/A
17	560 + 94	X		35W N.B.	9XBD-49	400 W	MED	TYP	N/A
18	560 + 94	X		35W N.B.	9XBD-49	400 W	MED	TYP	N/A
19	563 + 69	X		35W N.B.	9XBD-49	400 W	MED	TYP	N/A
20	566 + 44	X		35W N.B.	9XBD-49	400 W	MED	TYP	N/A

FEED POINT 'W4E'
LIGHTING STANDARDS AND BASES

NO.	STATION	LT.	RT.	LOCATION	TYPE	FIXTURE	BASE TYPE	POLE HEIGHT	WALL #
1	566 + 85	X		35W N.B.	9X-40	250 W	E	35'	N/A



T:\02134 PM 1/4/2006 11:49:01 AM \HI-MUVP\an\2782281.LTI.DGN

NO	DATE	BY	CHKD	APPR	REVISION

I hereby certify that this plan, specification, or report was prepared by me or under my direct supervision and that I am a duly Licensed Professional Electrical Engineer under the laws of the State of Minnesota.

Print Name: **BRIAN D. HOLT**
Brian D Holt

Date: 1-9-06 License #: 21428

DRAWN BY
J. KRUSE

DESIGNED BY
J. KRUSE

CHECKED BY
B. HOLT

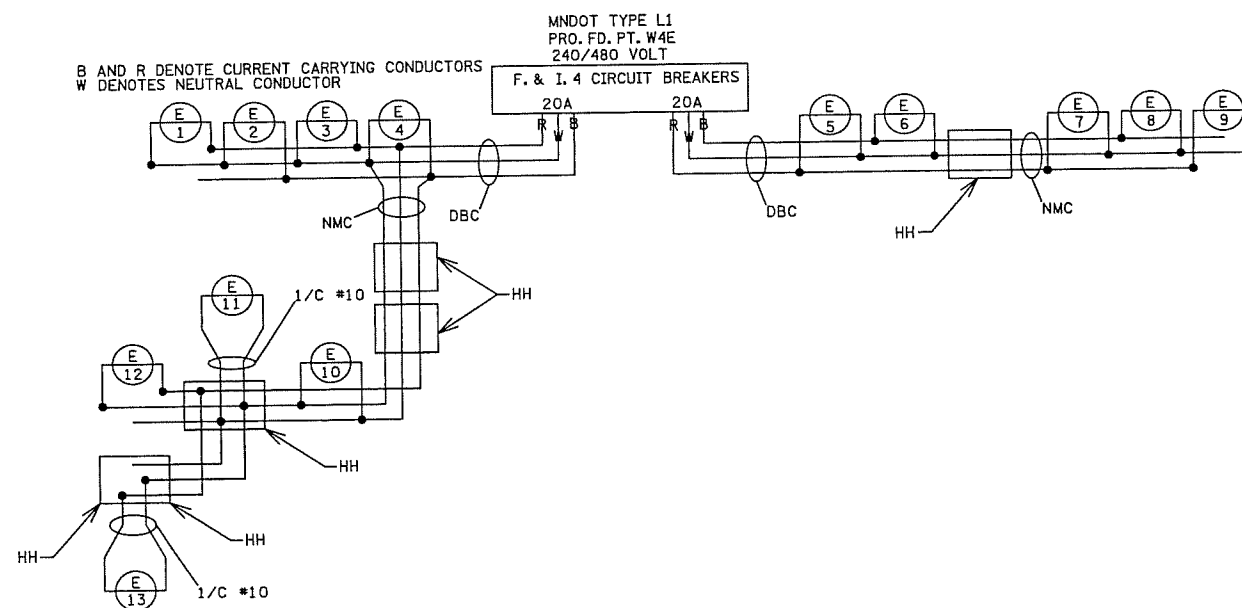
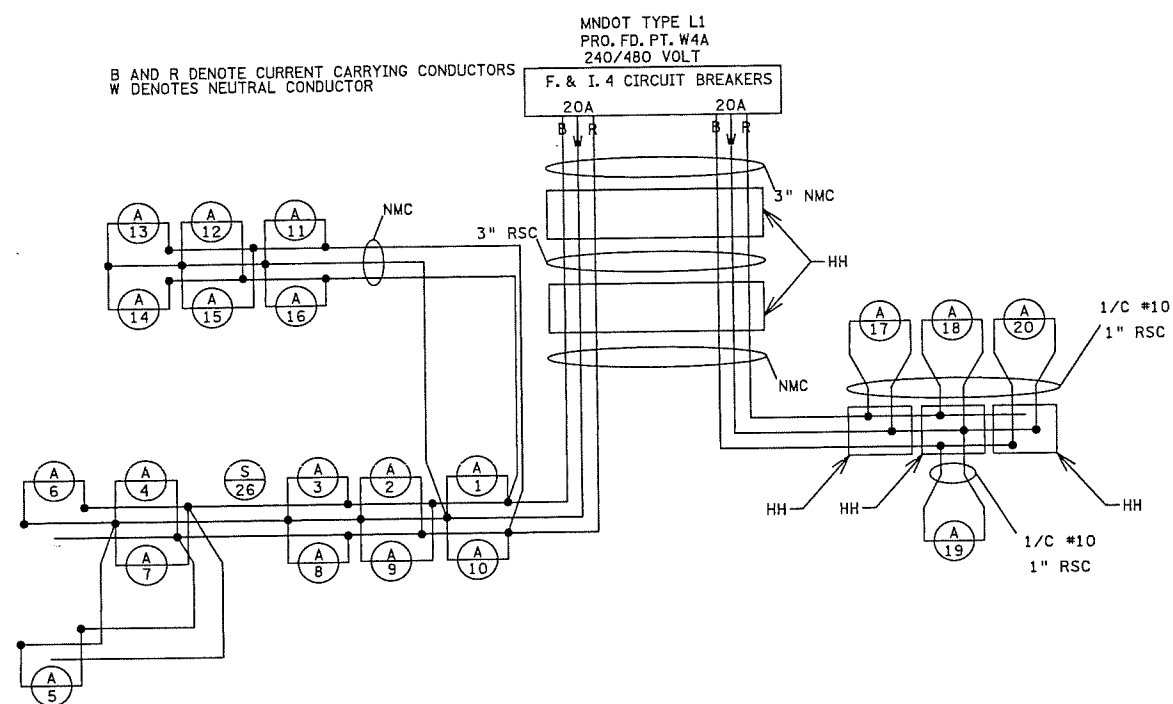
COMM. NO. 0034702



MINNESOTA DEPARTMENT OF TRANSPORTATION SHEET 1361 OF 1681

LIGHTING PLAN
S.P. 2782-281 (T.H. 35W)
MAIN LINE

WHEN LIGHTS AND SIGNS ARE SHOWN
BUT NOT CONNECTED, THIS SIGNIFIES
A CIRCUIT BEING ROUTED THROUGH
THE BASE BUT NOT TERMINATED THERE.



- NOTES:
1. ALL DISTRIBUTION CABLE IN CONDUIT SHALL BE 3-1/C #4 AND 1-1/C #4 GND (UNLESS OTHERWISE NOTED).
 2. DIRECT BURIED CABLE SHALL BE ARMORED CABLE WITH 4-1/C #4 CONDUCTORS.
 3. ALL CONDUIT SHALL BE 1 1/2" NON-METALLIC CONDUIT (UNLESS OTHERWISE NOTED).

10:59:05 AM 1/5/2006 H:\Projects\4702-F\HI-MUN\Plan\C2782281.LTY.dgn

NO	DATE	BY	CKD	APPR	REVISION

... \HI-MUN\Plan\C2782281.LTY.dgn

I hereby certify that this plan, specification, or report was prepared by me or under my direct supervision and that I am a duly Licensed Professional Electrical Engineer under the laws of the State of Minnesota.

Print Name: **BRIAN D. HOLT**
Brian D Holt
 Date: 1-9-06 License #: 21428

DRAWN BY
J. KRUSE
 DESIGNED BY
J. KRUSE
 CHECKED BY
B. HOLT
 COMM. NO. 0034702



MINNESOTA DEPARTMENT OF TRANSPORTATION SHEET
 LIGHTING PLAN 1378
 S.P. 2782-281 (T.H. 35W) OF
 WIRING DIAGRAMS 1681