

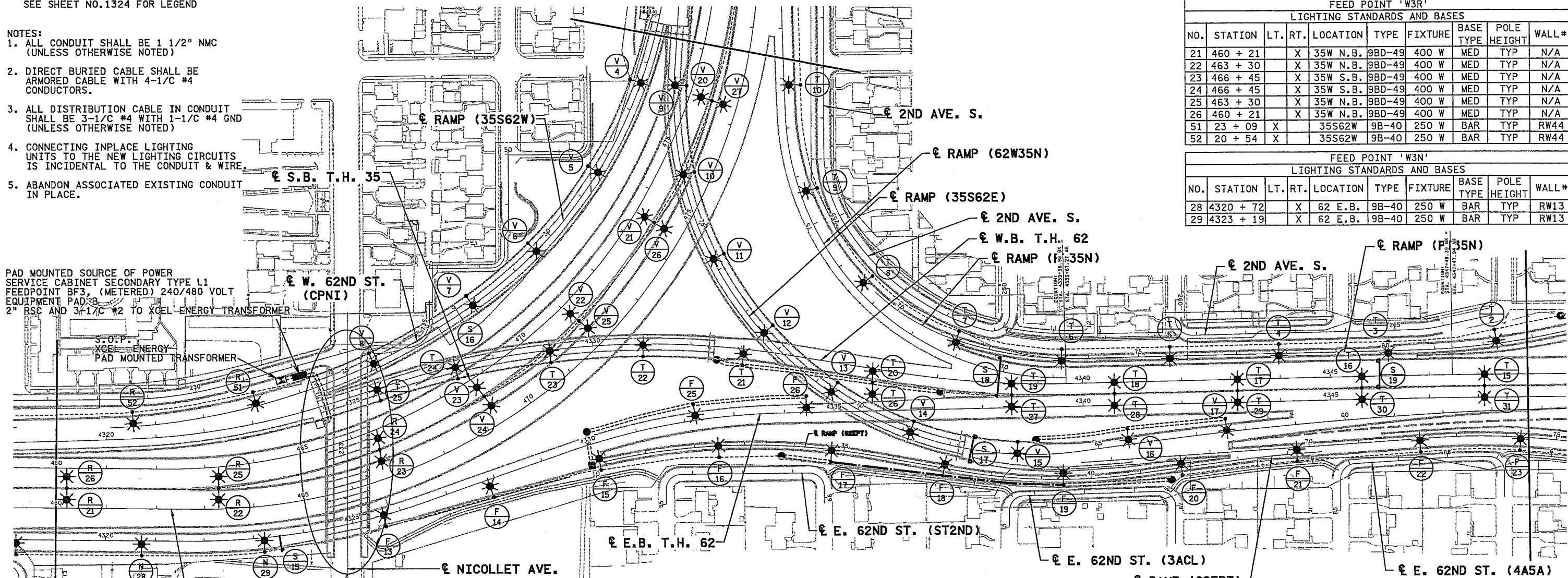
SEE SHEET NO. 1324 FOR LEGEND

- NOTES:
1. ALL CONDUIT SHALL BE 1 1/2" NMC (UNLESS OTHERWISE NOTED)
 2. DIRECT BURIED CABLE SHALL BE ARMORED CABLE WITH 4-1/C #4 CONDUCTORS.
 3. ALL DISTRIBUTION CABLE IN CONDUIT SHALL BE 3-1/C #4 WITH 1-1/C #4 GND (UNLESS OTHERWISE NOTED)
 4. CONNECTING INPLACE LIGHTING UNITS TO THE NEW LIGHTING CIRCUITS IS INCIDENTAL TO THE CONDUIT & WIRE.
 5. ABANDON ASSOCIATED EXISTING CONDUIT IN PLACE.

PAD MOUNTED SOURCE OF POWER SERVICE CABINET SECONDARY TYPE L1 FEEDPOINT BF3, (METERED) 240/480 VOLT EQUIPMENT PAD 8" 2" BSC AND 3-1/C #2 TO XCEL ENERGY TRANSFORMER

S.O.P. XCEL ENERGY PAD MOUNTED TRANSFORMER

SEE SHEET NO. 1367 FOR UNDERPASS LIGHTING



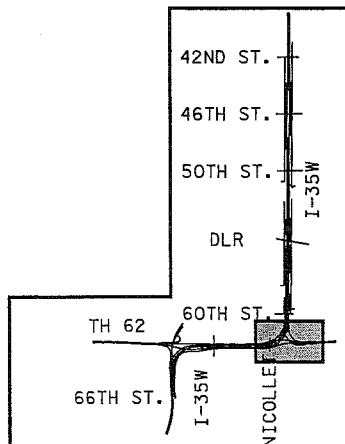
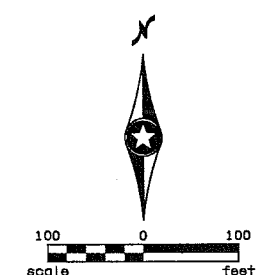
FEED POINT 'W3R'									
LIGHTING STANDARDS AND BASES									
NO.	STATION	LT.	RT.	LOCATION	TYPE	FIXTURE	BASE TYPE	POLE HEIGHT	WALL #
21	460 + 21		X	35W N.B.	9BD-49	400 W	MED	TYP	N/A
22	463 + 30		X	35W N.B.	9BD-49	400 W	MED	TYP	N/A
23	466 + 45		X	35W S.B.	9BD-49	400 W	MED	TYP	N/A
24	466 + 45		X	35W S.B.	9BD-49	400 W	MED	TYP	N/A
25	463 + 30		X	35W N.B.	9BD-49	400 W	MED	TYP	N/A
26	460 + 21		X	35W N.B.	9BD-49	400 W	MED	TYP	N/A
51	23 + 09	X		35S62W	9B-40	250 W	BAR	TYP	RW44
52	20 + 54	X		35S62W	9B-40	250 W	BAR	TYP	RW44

FEED POINT 'W3N'									
LIGHTING STANDARDS AND BASES									
NO.	STATION	LT.	RT.	LOCATION	TYPE	FIXTURE	BASE TYPE	POLE HEIGHT	WALL #
28	4320 + 72		X	62 E.B.	9B-40	250 W	BAR	TYP	RW13
29	4323 + 19		X	62 E.B.	9B-40	250 W	BAR	TYP	RW13

FEED POINT 'W3T'									
LIGHTING STANDARDS AND BASES									
NO.	STATION	LT.	RT.	LOCATION	TYPE	FIXTURE	BASE TYPE	POLE HEIGHT	WALL #
2	82 + 26	X		PT35N	9B-40	250 W	BAR	30'	RW61
3	80 + 06	X		PT35N	9B-40	250 W	BAR	25'	RW61
4	77 + 86	X		PT35N	9B-40	250 W	BAR	30'	RW61
5	75 + 65	X		PT35N	9B-40	250 W	BAR	35'	RW61
6	73 + 46	X		PT35N	9B-40	250 W	BAR	30'	RW61
7	71 + 32	X		PT35N	9B-40	250 W	BAR	30'	RW61
8	73 + 41		X	62W35N	9B-40	250 W	BAR	30'	RW61
9	75 + 66		X	62W35N	9B-40	250 W	BAR	TYP	RW18
10	77 + 85		X	62W35N	9B-40	250 W	BAR	TYP	RW18
15	4348 + 13		X	62 W.B.	9BD-49	250 W	MED	TYP	N/A
16	4345 + 63		X	62 W.B.	9BD-49	250 W	MED	TYP	N/A
17	4343 + 13		X	62 W.B.	9BD-49	250 W	MED	TYP	N/A
18	4340 + 63		X	62 W.B.	9BD-49	250 W	MED	TYP	N/A
19	4338 + 49		X	62 W.B.	9BD-49	250 W	MED	TYP	N/A
20	4335 + 72		X	62 W.B.	9D-49	250 W	H	TYP	N/A
21	4333 + 06		X	62 W.B.	9-40	250 W	H	TYP	N/A
22	4331 + 02		X	62 W.B.	6B-40	250 W	BAR	TYP	BRIDGE
23	4329 + 12		X	62 W.B.	6B-40	250 W	BAR	TYP	BRIDGE
24	4327 + 23		X	62 W.B.	6B-40	250 W	BAR	TYP	BRIDGE
25	4325 + 57		X	62 W.B.	6B-40	250 W	BAR	TYP	BRIDGE
26	4335 + 72		X	62 W.B.	9D-49	250 W	H	TYP	N/A
27	4338 + 49		X	62 W.B.	9BD-49	250 W	MED	TYP	N/A
28	4340 + 63		X	62 W.B.	9BD-49	250 W	MED	TYP	N/A
29	4343 + 13		X	62 W.B.	9BD-49	250 W	MED	TYP	N/A
30	4345 + 63		X	62 W.B.	9BD-49	250 W	MED	TYP	N/A
31	4348 + 13		X	62 W.B.	9BD-49	250 W	MED	TYP	N/A

FEED POINT 'W3V'									
LIGHTING STANDARDS AND BASES									
NO.	STATION	LT.	RT.	LOCATION	TYPE	FIXTURE	BASE TYPE	POLE HEIGHT	WALL #
4	33 + 57	X		35S62W	6B-40	250 W	BAR	TYP	BRIDGE
5	31 + 59	X		35S62W	6B-40	250 W	BAR	TYP	BRIDGE
6	29 + 57	X		35S62W	6B-40	250 W	BAR	TYP	BRIDGE
7	27 + 91	X		35S62W	6B-40	250 W	BAR	TYP	BRIDGE
8	25 + 59	X		35S62W	6B-40	250 W	BAR	TYP	BRIDGE
9	77 + 83		X	35S62E	6B-40	250 W	BAR	TYP	BRIDGE
10	76 + 04		X	35S62E	6B-40	250 W	BAR	TYP	BRIDGE
11	74 + 24		X	35S62E	6B-40	250 W	BAR	TYP	BRIDGE
12	72 + 44		X	35S62E	6B-40	250 W	BAR	TYP	BRIDGE
13	70 + 64		X	35S62E	6B-40	250 W	BAR	TYP	BRIDGE
14	68 + 84		X	35S62E	6B-40	250 W	BAR	TYP	BRIDGE
15	66 + 64		X	35S62E	9B-40	250 W	BAR	TYP	RW16
16	64 + 39		X	35S62E	9-40	250 W	E	TYP	N/A
17	62 + 40		X	35S62E	9-40	250 W	E	TYP	N/A
20	476 + 08		X	35W S.B.	9BD-49	400 W	MED	TYP	N/A
21	473 + 48		X	35W S.B.	9BD-49	400 W	MED	TYP	N/A
22	471 + 07		X	35W S.B.	9BD-49	400 W	MED	TYP	N/A
23	468 + 73		X	35W S.B.	9BD-49	400 W	MED	TYP	N/A
24	468 + 73		X	35W S.B.	9BD-49	400 W	MED	TYP	N/A
25	471 + 07		X	35W S.B.	9BD-49	400 W	MED	TYP	N/A
26	473 + 48		X	35W S.B.	9BD-49	400 W	MED	TYP	N/A
27	476 + 08		X	35W S.B.	9BD-49	400 W	MED	TYP	N/A

FEED POINT 'R3F'									
LIGHTING STANDARDS AND BASES									
NO.	STATION	LT.	RT.	LOCATION	TYPE	FIXTURE	BASE TYPE	POLE HEIGHT	WALL #
13	4325 + 64		X	62 E.B.	9B-40	250 W	BAR	TYP	RW14
14	4327 + 86		X	62 E.B.	9B-40	250 W	BAR	TYP	RW14
15	4330 + 08		X	62 E.B.	9B-40	250 W	BAR	TYP	RW14
16	32 + 48		X	62EPT	9B-40	250 W	BAR	TYP	RW14
17	34 + 76		X	62EPT	9-40	250 W	E	TYP	N/A
18	37 + 06		X	62EPT	9-40	250 W	E	TYP	N/A
19	39 + 44		X	62EPT	9-40	250 W	E	TYP	N/A
20	41 + 84		X	62EPT	9B-40	250 W	BAR	TYP	RW60
21	69 + 74		X	35SPT	9B-40	250 W	BAR	30'	RW60
22	72 + 24		X	35SPT	9B-40	250 W	BAR	30'	RW60
23	74 + 29		X	35SPT	9B-40	250 W	BAR	35'	RW60
25	4332 + 22	X		62 E.B.	9-40	250 W	E	TYP	N/A
26	4334 + 45	X		62 E.B.	9-40	250 W	E	TYP	N/A



3/18/14 5 PM 1/5/2006 M:\proj\1324\1324-1\mup\1324-1\l1\l1.dgn

NO.	DATE	BY	CHKD	APPR	REVISION

I hereby certify that this plan, specification, or report was prepared by me or under my direct supervision and that I am a duly Licensed Professional Electrical Engineer under the laws of the State of Minnesota.

Print Name: **BRIAN D. HOLT**

Brian D. Holt

Date: **1-9-06** License #: **21428**

DRAWN BY
J. KRUSE

DESIGNED BY
J. KRUSE

CHECKED BY
B. HOLT

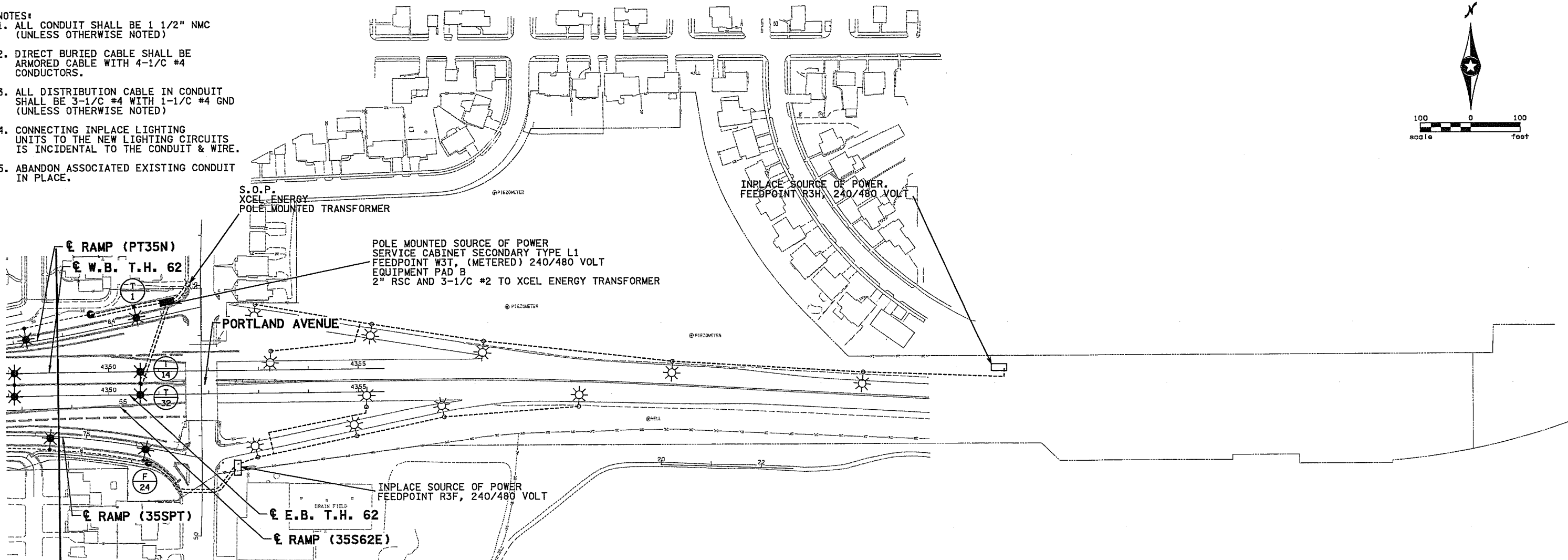
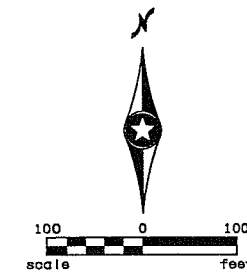
COMM. NO. 0034702



SEE SHEET NO.1324 FOR LEGEND

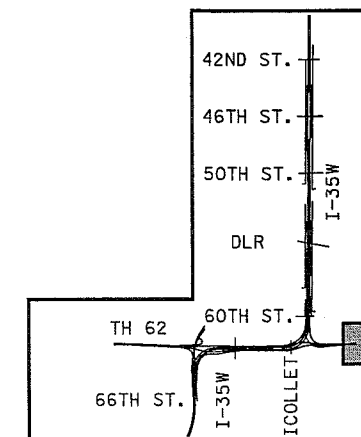
NOTES:

1. ALL CONDUIT SHALL BE 1 1/2" NMC (UNLESS OTHERWISE NOTED)
2. DIRECT BURIED CABLE SHALL BE ARMORED CABLE WITH 4-1/C #4 CONDUCTORS.
3. ALL DISTRIBUTION CABLE IN CONDUIT SHALL BE 3-1/C #4 WITH 1-1/C #4 GND (UNLESS OTHERWISE NOTED)
4. CONNECTING INPLACE LIGHTING UNITS TO THE NEW LIGHTING CIRCUITS IS INCIDENTAL TO THE CONDUIT & WIRE.
5. ABANDON ASSOCIATED EXISTING CONDUIT IN PLACE.



FEED POINT 'W3T'									
LIGHTING STANDARDS AND BASES									
NO.	STATION	LT.	RT.	LOCATION	TYPE	FIXTURE	BASE TYPE	POLE HEIGHT	WALL #
1	84 + 50	X		PT35N	9-40	250 W	E	TYP	N/A
14	4350 + 63		X	62 E.B.	9BD-49	400 W	MED	TYP	N/A
32	4350 + 63		X	62 E.B.	9BD-49	400 W	MED	TYP	N/A

FEED POINT 'R3F'									
LIGHTING STANDARDS AND BASES									
NO.	STATION	LT.	RT.	LOCATION	TYPE	FIXTURE	BASE TYPE	POLE HEIGHT	WALL #
24	76 + 19		X	35SPT	9B-40	250 W	BAR	TYP	RW60



7:02:29 PM H:\projects\4702-F\HI-MUN\PIan\C2782281_LTF.DGN

NO.	DATE	BY	CHK	APPR	REVISION

I hereby certify that this plan, specification, or report was prepared by me or under my direct supervision and that I am a duly Licensed Professional Electrical Engineer under the laws of the State of Minnesota.

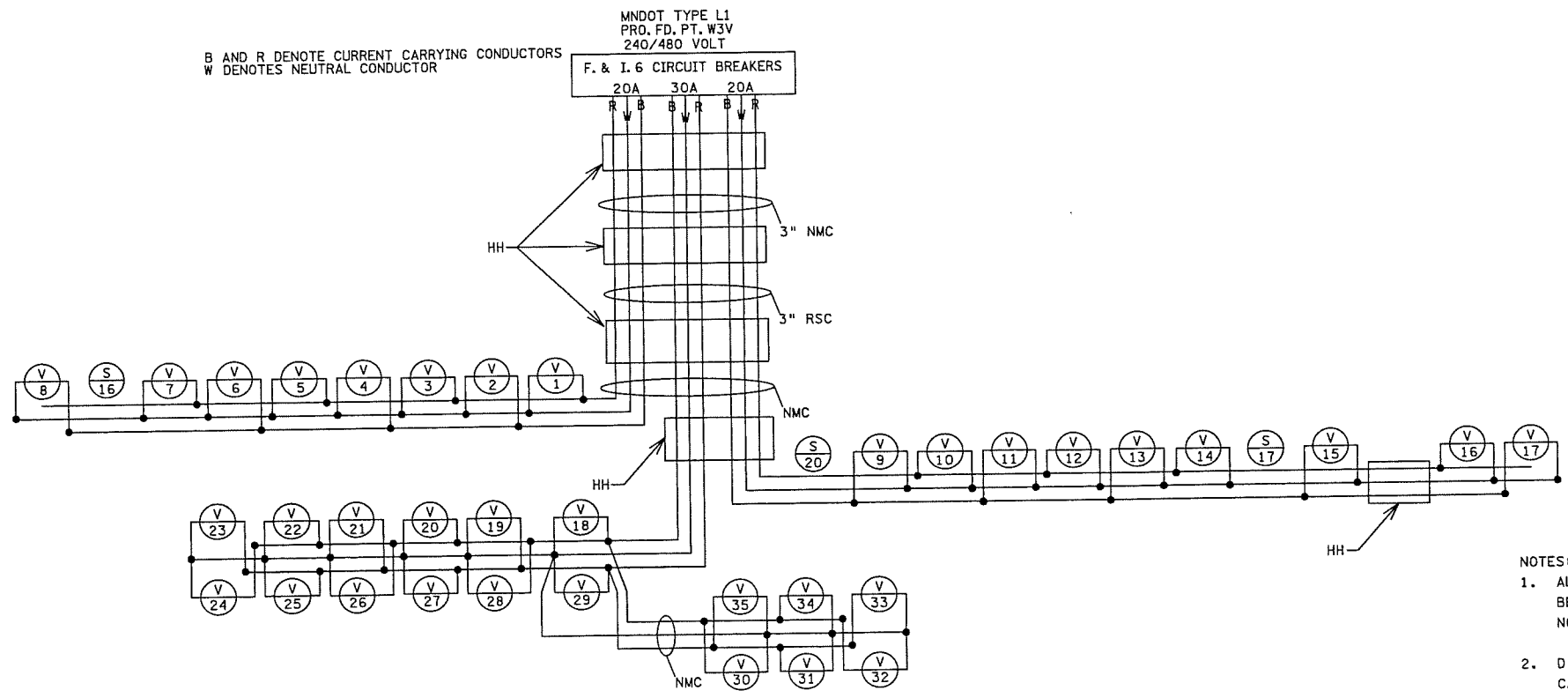
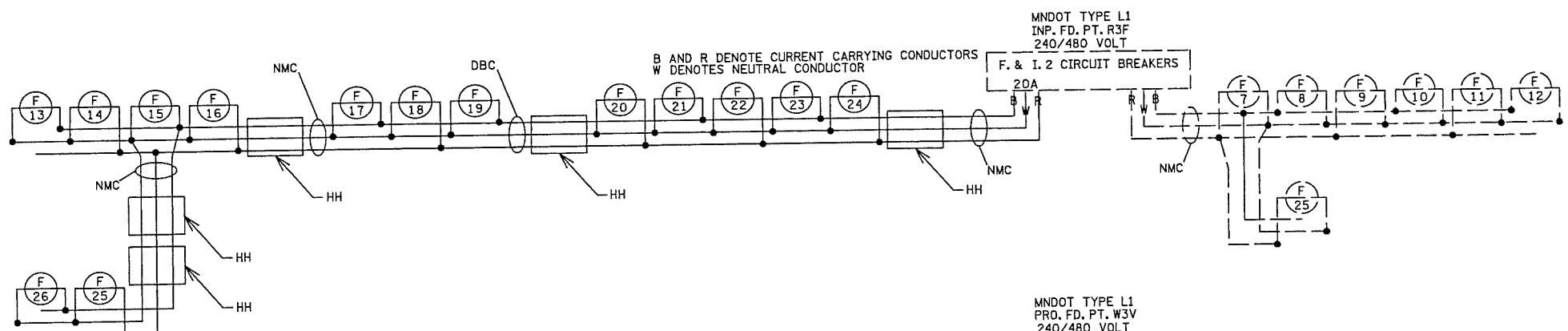
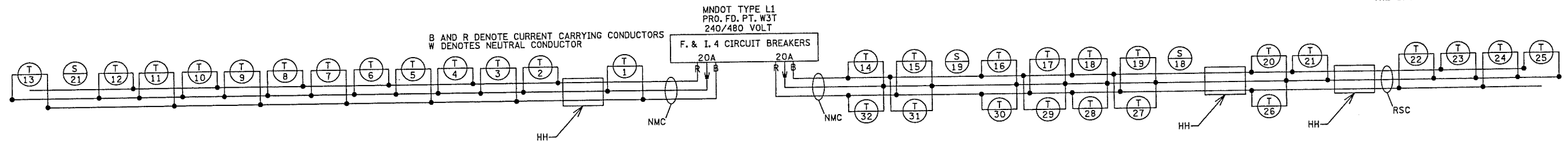
Print Name: **BRIAN D. HOLT**
Brian D. Holt
 Date: 1-9-06 License #: 21428

DRAWN BY J. KRUSE
 DESIGNED BY J. KRUSE
 CHECKED BY B. HOLT
 COMM. NO. 0034702



MINNESOTA DEPARTMENT OF TRANSPORTATION SHEET 1358 OF 1681
 LIGHTING PLAN
 S.P. 2782-281 (T.H. 35W)
 MAIN LINE

WHEN LIGHTS AND SIGNS ARE SHOWN BUT NOT CONNECTED, THIS SIGNIFIES A CIRCUIT BEING ROUTED THROUGH THE BASE BUT NOT TERMINATED THERE.



- NOTES:
1. ALL DISTRIBUTION CABLE IN CONDUIT SHALL BE 3-1/C #4 AND 1-1/C #4 GND (UNLESS OTHERWISE NOTED).
 2. DIRECT BURIED CABLE SHALL BE ARMORED CABLE WITH 4-1/C #4 CONDUCTORS.
 3. ALL CONDUIT SHALL BE 1 1/2" NON-METALLIC CONDUIT (UNLESS OTHERWISE NOTED).

T:\02154 PM
 1/4/2006
 H:\Prof\ea\4702-F\HI-MU\Plan\C2782281.LTW.DGN

NO	DATE	BY	CKD	APPR	REVISION

I hereby certify that this plan, specification, or report was prepared by me or under my direct supervision and that I am a duly Licensed Professional Electrical Engineer under the laws of the State of Minnesota.

Print Name: **BRIAN D. HOLT**
Brian D Holt

Date: 1-9-06 License #: 21428

DRAWN BY
J. KRUSE
 DESIGNED BY
J. KRUSE
 CHECKED BY
B. HOLT
 COMM. NO. 0034702



MINNESOTA DEPARTMENT OF TRANSPORTATION SHEET
 LIGHTING PLAN 1376
 S.P. 2782-281 (T.H. 35W) OF
 WIRING DIAGRAMS 1681