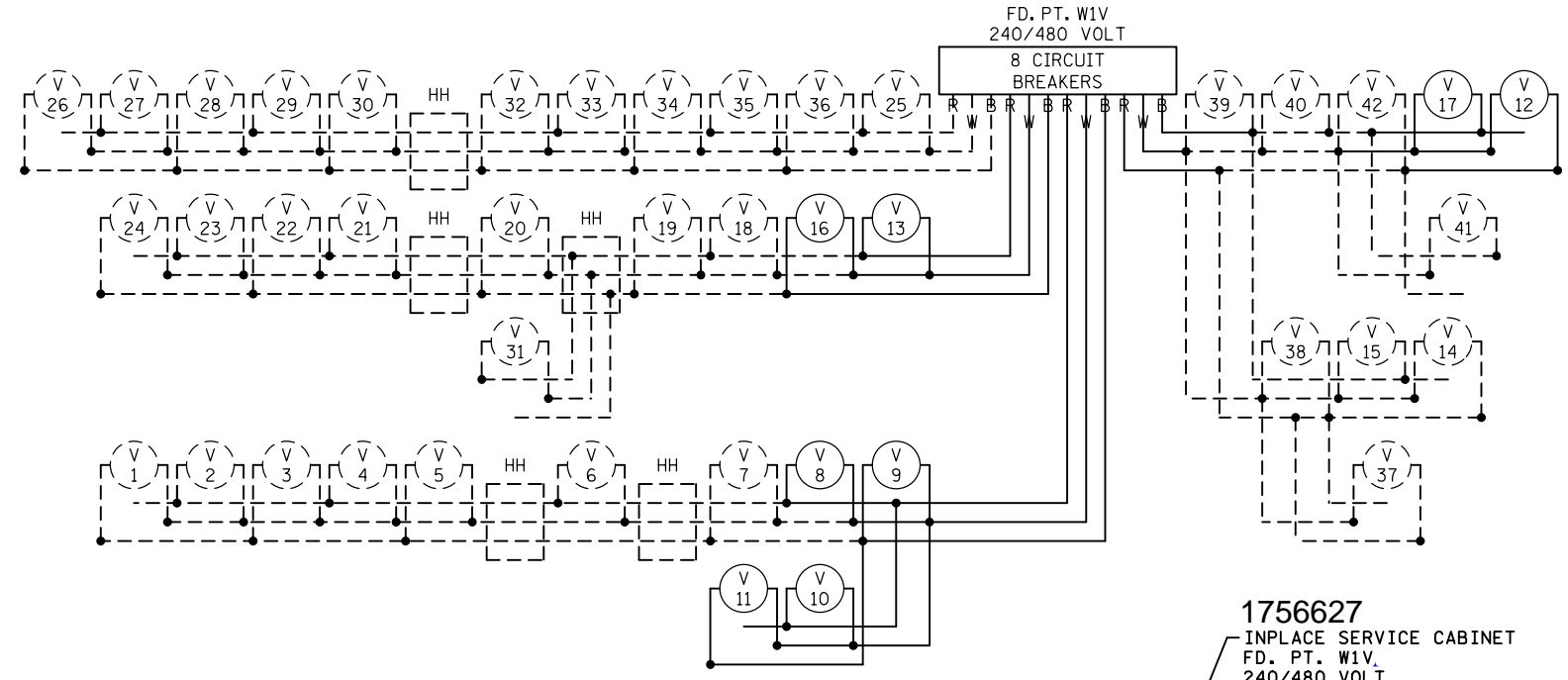
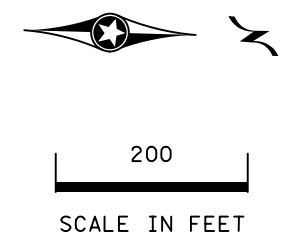


FEED POINT W1V  
LIGHTING STANDARDS AND FOUNDATIONS

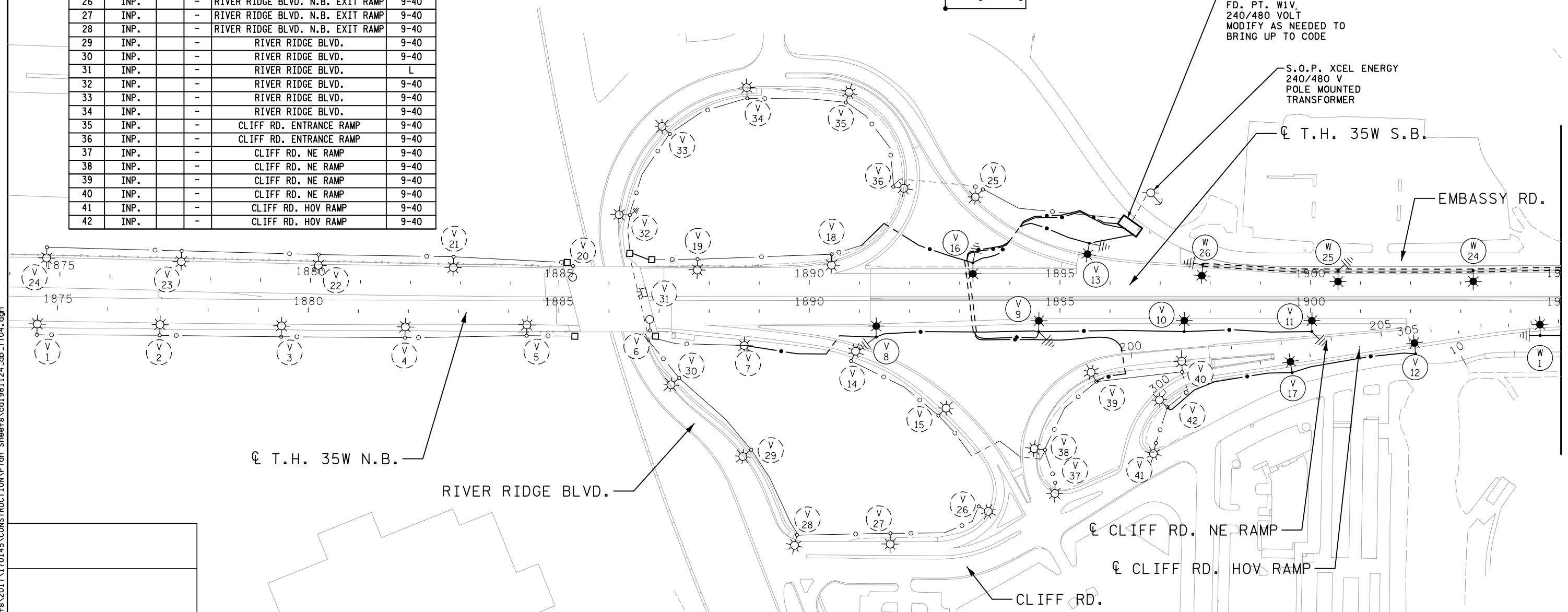
NO.	STATION	LT.	RT.	LOCATION	TYPE
1	INP.	-	-	T.H. 35W N.B.	9-49
2	INP.	-	-	T.H. 35W N.B.	9-49
3	INP.	-	-	T.H. 35W N.B.	9-49
4	INP.	-	-	T.H. 35W N.B.	9-49
5	INP.	-	-	T.H. 35W N.B.	9-49
6	INP.	-	-	T.H. 35W N.B.	6-49
7	INP.	-	-	T.H. 35W N.B.	9-49
8	1891+33	-	-	T.H. 35W N.B.	9-49
9	1894+58	-	-	T.H. 35W N.B.	9-49
10	1897+48	-	-	T.H. 35W N.B.	9-49
11	1900+03	-	-	T.H. 35W N.B.	9-49
12	305+08	-	-	CLIFF RD. NE RAMP	9-49
13	1895+59	-	-	T.H. 35W S.B.	9-49
14	INP.	-	-	RIVER RIDGE BLVD. N.B. EXIT RAMP	9-40
15	INP.	-	-	RIVER RIDGE BLVD. N.B. EXIT RAMP	9-40
16	1893+26	-	-	T.H. 35W S.B.	9-49
17	302+59	-	-	CLIFF RD. NE RAMP	9-40
18	INP.	-	-	T.H. 35W S.B.	9-49
19	INP.	-	-	T.H. 35W S.B.	9-49
20	INP.	-	-	T.H. 35W S.B.	6-49
21	INP.	-	-	T.H. 35W S.B.	9-49
22	INP.	-	-	T.H. 35W S.B.	9-49
23	INP.	-	-	T.H. 35W S.B.	9-49
24	INP.	-	-	T.H. 35W S.B.	9-49
25	INP.	-	-	CLIFF RD. EXIT RAMP	9-40
26	INP.	-	-	RIVER RIDGE BLVD. N.B. EXIT RAMP	9-40
27	INP.	-	-	RIVER RIDGE BLVD. N.B. EXIT RAMP	9-40
28	INP.	-	-	RIVER RIDGE BLVD. N.B. EXIT RAMP	9-40
29	INP.	-	-	RIVER RIDGE BLVD.	9-40
30	INP.	-	-	RIVER RIDGE BLVD.	9-40
31	INP.	-	-	RIVER RIDGE BLVD.	L
32	INP.	-	-	RIVER RIDGE BLVD.	9-40
33	INP.	-	-	RIVER RIDGE BLVD.	9-40
34	INP.	-	-	RIVER RIDGE BLVD.	9-40
35	INP.	-	-	CLIFF RD. ENTRANCE RAMP	9-40
36	INP.	-	-	CLIFF RD. ENTRANCE RAMP	9-40
37	INP.	-	-	CLIFF RD. NE RAMP	9-40
38	INP.	-	-	CLIFF RD. NE RAMP	9-40
39	INP.	-	-	CLIFF RD. NE RAMP	9-40
40	INP.	-	-	CLIFF RD. NE RAMP	9-40
41	INP.	-	-	CLIFF RD. HOV RAMP	9-40
42	INP.	-	-	CLIFF RD. HOV RAMP	9-40

DASHED LINE INDICATES INPLACE ITEMS  
B AND R DENOTE CURRENT CARRYING CONDUCTORS  
W DENOTES NEUTRAL CONDUCTOR



1756627  
INPLACE SERVICE CABINET  
FD. PT. W1V  
240/480 VOLT  
MODIFY AS NEEDED TO  
BRING UP TO CODE

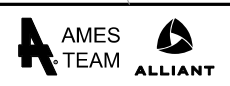
S.O.P. XCEL ENERGY  
240/480 V  
POLE MOUNTED  
TRANSFORMER



MATCHLINE  
T.H. 35W N.B. STA. 1905+00 R 1

8:48:03 PM  
3/28/2021  
C:\Projects\2017\170145\CONSTRUCTION\Plan\_Sheets\cd1981124\_cb\_1.04.dgn

NO	DATE	DWN	CKD	REVISIONS
0	02/18/19	JJP	MPM	RFC DP T-1
1	03/31/21			RECORD DRAWING



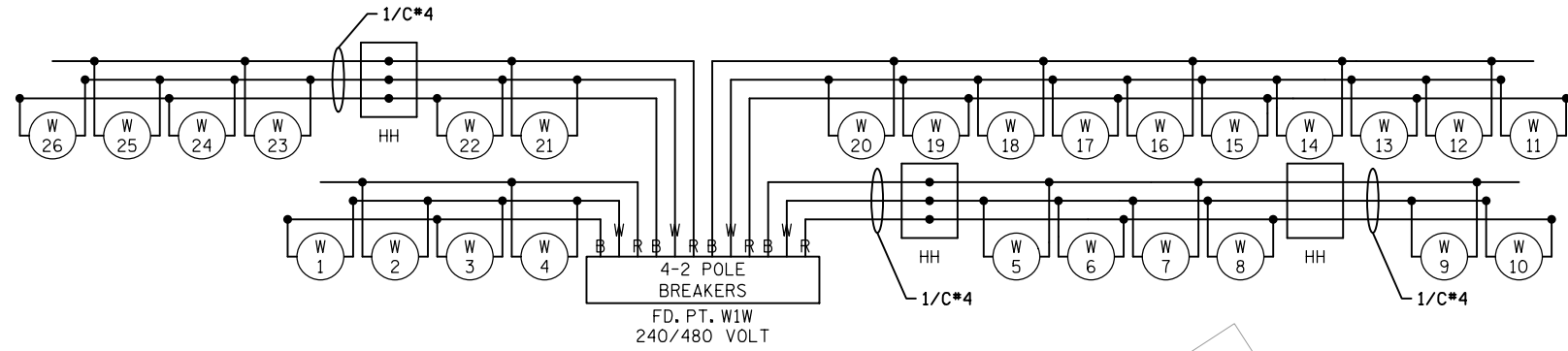
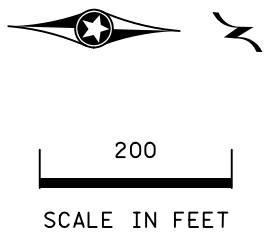
RECORD DRAWING NOTE: THESE RECORD DRAWINGS WERE DEVELOPED BASED ON THE PREVIOUS DRAWING REVISIONS AND INFORMATION TRANSMITTED FROM THE FIELD BY OTHERS. THE INFORMATION CONTAINED WITHIN THIS RECORD AS-BUILT PLAN REPRESENTS THE ACTUAL CONDITIONS FOR ALL CHANGES OF WHICH ALLIANT IS AWARE. FUTURE USERS OF THESE DRAWINGS SHOULD VERIFY AS-BUILT CONDITIONS IN THE FIELD IN ALL CIRCUMSTANCES.

PERMANENT LIGHTING PLAN  
FD. PT. W1V LAYOUT

I-35W DB PROJECT (S.P. 1981-124)  
SHEET NO. LL04 OF LL08 SHEETS

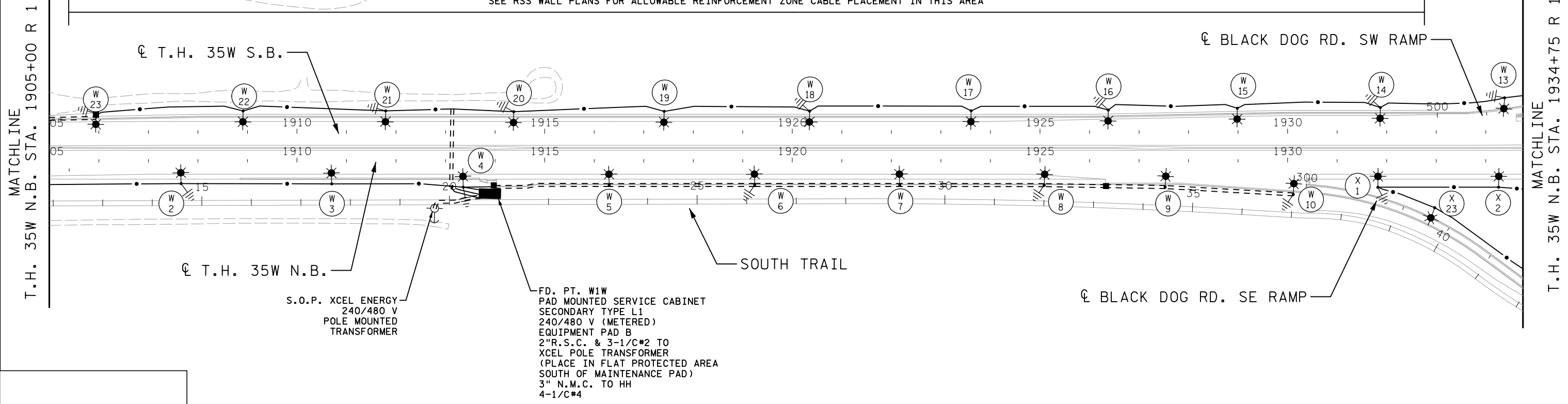
FEED POINT W1W  
LIGHTING STANDARDS AND FOUNDATIONS

NO.	STATION	LT.	RT.	LOCATION	TYPE
1	307+62	-	-	CLIFF RD. NE RAMP	9-49
2	1907+66	-	-	T.H. 35W N.B.	9-49
3	1910+70	-	-	T.H. 35W N.B.	9-49
4	1913+36	-	-	T.H. 35W N.B.	9-49
5	1916+30	-	-	T.H. 35W N.B.	6B-49
6	1919+24	-	-	T.H. 35W N.B.	6B-49
7	1922+17	-	-	T.H. 35W N.B.	6B-49
8	1925+08	-	-	T.H. 35W N.B.	6B-49
9	1927+53	-	-	T.H. 35W N.B.	9-49
10	1930+11	-	-	T.H. 35W N.B.	9-49
11	506+46	-	-	BLACK DOG RD. SW RAMP	9-40
12	503+82	-	-	BLACK DOG RD. SW RAMP	9-40
13	501+40	-	-	BLACK DOG RD. SW RAMP	9-49
14	1931+87	-	-	T.H. 35W S.B.	9-49
15	1928+98	-	-	T.H. 35W S.B.	9-49
16	1926+38	-	-	T.H. 35W S.B.	9-49
17	1923+61	-	-	T.H. 35W S.B.	9-49
18	1920+35	-	-	T.H. 35W S.B.	9-49
19	1917+41	-	-	T.H. 35W S.B.	9-49
20	1914+38	-	-	T.H. 35W S.B.	9-49
21	1911+79	-	-	T.H. 35W S.B.	9-49
22	1908+91	-	-	T.H. 35W S.B.	9-49
23	1905+95	-	-	T.H. 35W S.B.	9-49
24	1903+25	-	-	T.H. 35W S.B.	6B-49
25	1900+55	-	-	T.H. 35W S.B.	6B-49
26	1897+85	-	-	T.H. 35W S.B.	6B-49



DASHED LINE INDICATES INPLACE ITEMS  
B AND R DENOTE CURRENT CARRYING CONDUCTORS  
W DENOTES NEUTRAL CONDUCTOR

SEE RSS WALL PLANS FOR ALLOWABLE REINFORCEMENT ZONE CABLE PLACEMENT IN THIS AREA



S.O.P. XCEL ENERGY  
240/480 V  
POLE MOUNTED  
TRANSFORMER

FD. PT. W1W  
PAD MOUNTED SERVICE CABINET  
SECONDARY TYPE L1  
240/480 V (METERED)  
EQUIPMENT PAD B  
2"R.S.C. & 3-1/C\*2 TO  
XCEL POLE TRANSFORMER  
(PLACE IN FLAT PROTECTED AREA  
SOUTH OF MAINTENANCE PAD)  
3" N.M.C. TO HH  
4-1/C\*4

6:36:09 PM 3/30/2021 \\projects\2017\170145\CONSTRUCTION\Plan Sheets\cd1981124\_cb\_1105.dgn

NO	DATE	DWN	CKD	REVISIONS
0	02/18/19	JJP	MPM	RFC DP T-1
1	03/31/21			RECORD DRAWING



RECORD DRAWING NOTE: THESE RECORD DRAWINGS WERE DEVELOPED BASED ON THE PREVIOUS DRAWING REVISIONS AND INFORMATION TRANSMITTED FROM THE FIELD BY OTHERS. THE INFORMATION CONTAINED WITHIN THIS RECORD AS-BUILT PLAN REPRESENTS THE ACTUAL CONDITIONS FOR ALL CHANGES OF WHICH ALLIANT IS AWARE. FUTURE USERS OF THESE DRAWINGS SHOULD VERIFY AS-BUILT CONDITIONS IN THE FIELD IN ALL CIRCUMSTANCES.

PERMANENT LIGHTING PLAN  
FD. PT. W1W LAYOUT

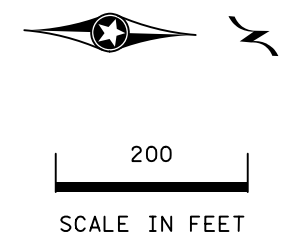
I-35W DB PROJECT (S.P. 1981-124)  
SHEET NO. LL05 OF LL08 SHEETS

SPECIFIC NOTE:

① SEE RSS WALL PLANS FOR ALLOWABLE REINFORCEMENT ZONE CABLE PLACEMENT IN THIS AREA.

FEED POINT W1X  
LIGHTING STANDARDS AND FOUNDATIONS

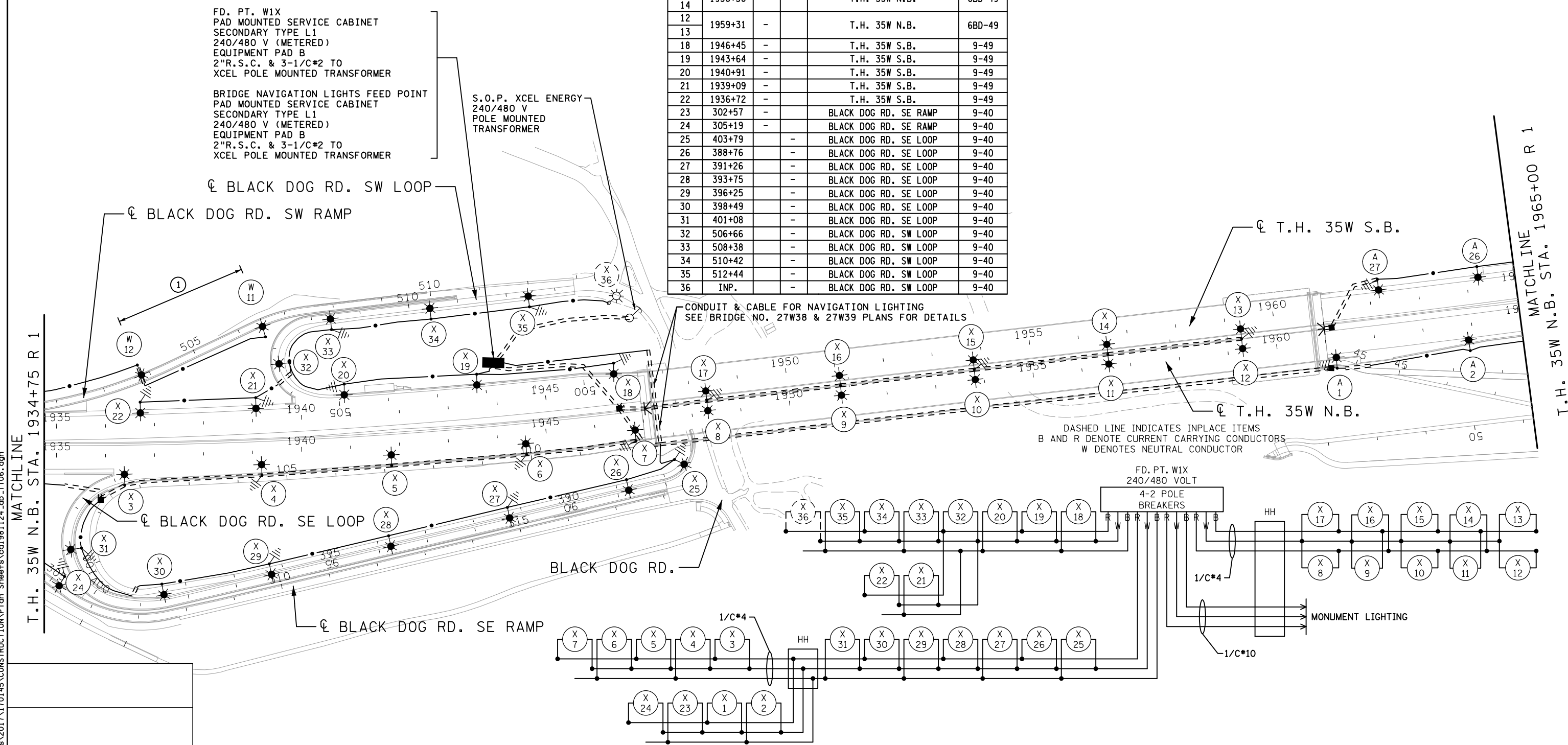
NO.	STATION	LT.	RT.	LOCATION	TYPE
1	1931+82	-	-	T.H. 35W N.B.	9-49
2	1934+26	-	-	T.H. 35W N.B.	9-49
3	1936+38	-	-	T.H. 35W N.B.	6B-49
4	1939+17	-	-	T.H. 35W N.B.	6B-49
5	1941+81	-	-	T.H. 35W N.B.	6B-49
6	1944+56	-	-	T.H. 35W N.B.	6B-49
7	1946+80	-	-	T.H. 35W N.B.	6B-49
8	1948+33	-	-	T.H. 35W N.B.	6B-49
9	1951+07	-	-	T.H. 35W N.B.	6B-49
10	1953+82	-	-	T.H. 35W N.B.	6B-49
11	1956+56	-	-	T.H. 35W N.B.	6B-49
12	1959+31	-	-	T.H. 35W N.B.	6B-49
13	1946+45	-	-	T.H. 35W S.B.	9-49
14	1943+64	-	-	T.H. 35W S.B.	9-49
15	1940+91	-	-	T.H. 35W S.B.	9-49
16	1939+09	-	-	T.H. 35W S.B.	9-49
17	1936+72	-	-	T.H. 35W S.B.	9-49
18	302+57	-	-	BLACK DOG RD. SE RAMP	9-40
19	305+19	-	-	BLACK DOG RD. SE RAMP	9-40
20	403+79	-	-	BLACK DOG RD. SE LOOP	9-40
21	388+76	-	-	BLACK DOG RD. SE LOOP	9-40
22	391+26	-	-	BLACK DOG RD. SE LOOP	9-40
23	393+75	-	-	BLACK DOG RD. SE LOOP	9-40
24	396+25	-	-	BLACK DOG RD. SE LOOP	9-40
25	398+49	-	-	BLACK DOG RD. SE LOOP	9-40
26	401+08	-	-	BLACK DOG RD. SE LOOP	9-40
27	506+66	-	-	BLACK DOG RD. SW LOOP	9-40
28	508+38	-	-	BLACK DOG RD. SW LOOP	9-40
29	510+42	-	-	BLACK DOG RD. SW LOOP	9-40
30	512+44	-	-	BLACK DOG RD. SW LOOP	9-40
31	INP.	-	-	BLACK DOG RD. SW LOOP	9-40



FD. PT. W1X  
PAD MOUNTED SERVICE CABINET  
SECONDARY TYPE L1  
240/480 V (METERED)  
EQUIPMENT PAD B  
2"R.S.C. & 3-1/C#2 TO  
XCEL POLE MOUNTED TRANSFORMER

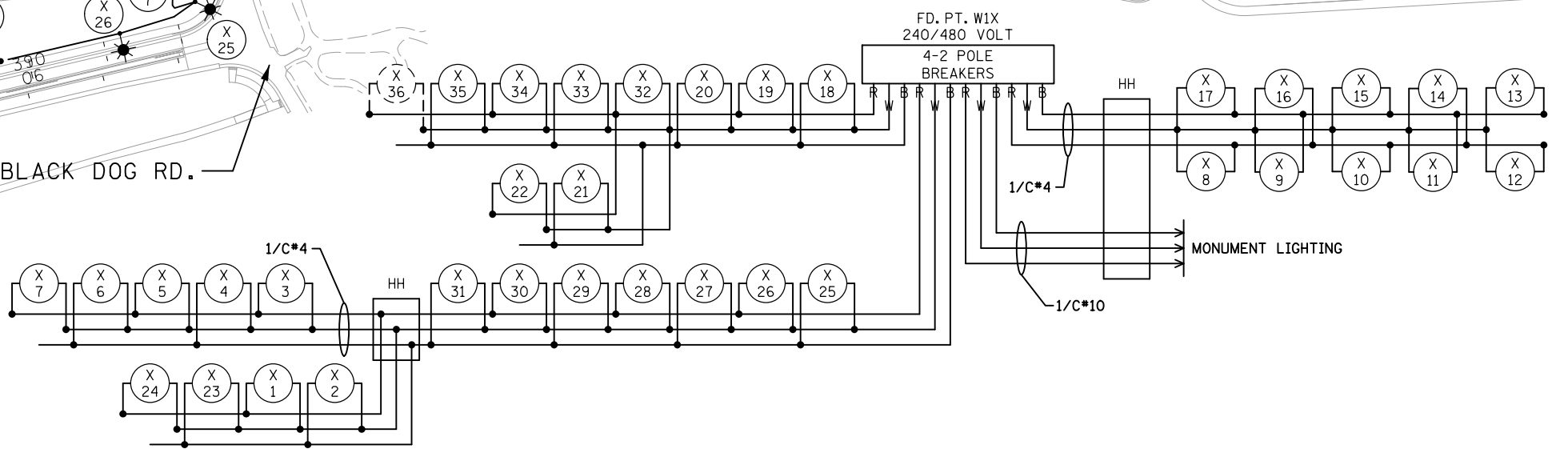
BRIDGE NAVIGATION LIGHTS FEED POINT  
PAD MOUNTED SERVICE CABINET  
SECONDARY TYPE L1  
240/480 V (METERED)  
EQUIPMENT PAD B  
2"R.S.C. & 3-1/C#2 TO  
XCEL POLE MOUNTED TRANSFORMER

S.O.P. XCEL ENERGY  
240/480 V  
POLE MOUNTED  
TRANSFORMER



CONDUIT & CABLE FOR NAVIGATION LIGHTING  
SEE BRIDGE NO. 27W38 & 27W39 PLANS FOR DETAILS

DASHED LINE INDICATES INPLACE ITEMS  
B AND R DENOTE CURRENT CARRYING CONDUCTORS  
W DENOTES NEUTRAL CONDUCTOR



6:36:13 PM 3/30/2021 \\projects\2017\170145\CONSTRUCTION\Plan Sheets\cd1981124\_cb\_1.106.dgn

NO.	DATE	DWN	CKD	REVISIONS
0	02/18/19	JJP	MPM	RFC DP T-1
1	04/21/20			FDC-097.100
2	03/31/21			RECORD DRAWING



RECORD DRAWING NOTE: THESE RECORD DRAWINGS WERE DEVELOPED BASED ON THE PREVIOUS DRAWING REVISIONS AND INFORMATION TRANSMITTED FROM THE FIELD BY OTHERS. THE INFORMATION CONTAINED WITHIN THIS RECORD AS-BUILT PLAN REPRESENTS THE ACTUAL CONDITIONS FOR ALL CHANGES OF WHICH ALLIANT IS AWARE. FUTURE USERS OF THESE DRAWINGS SHOULD VERIFY AS-BUILT CONDITIONS IN THE FIELD IN ALL CIRCUMSTANCES.

PERMANENT LIGHTING PLAN  
FD. PT. W1X LAYOUT