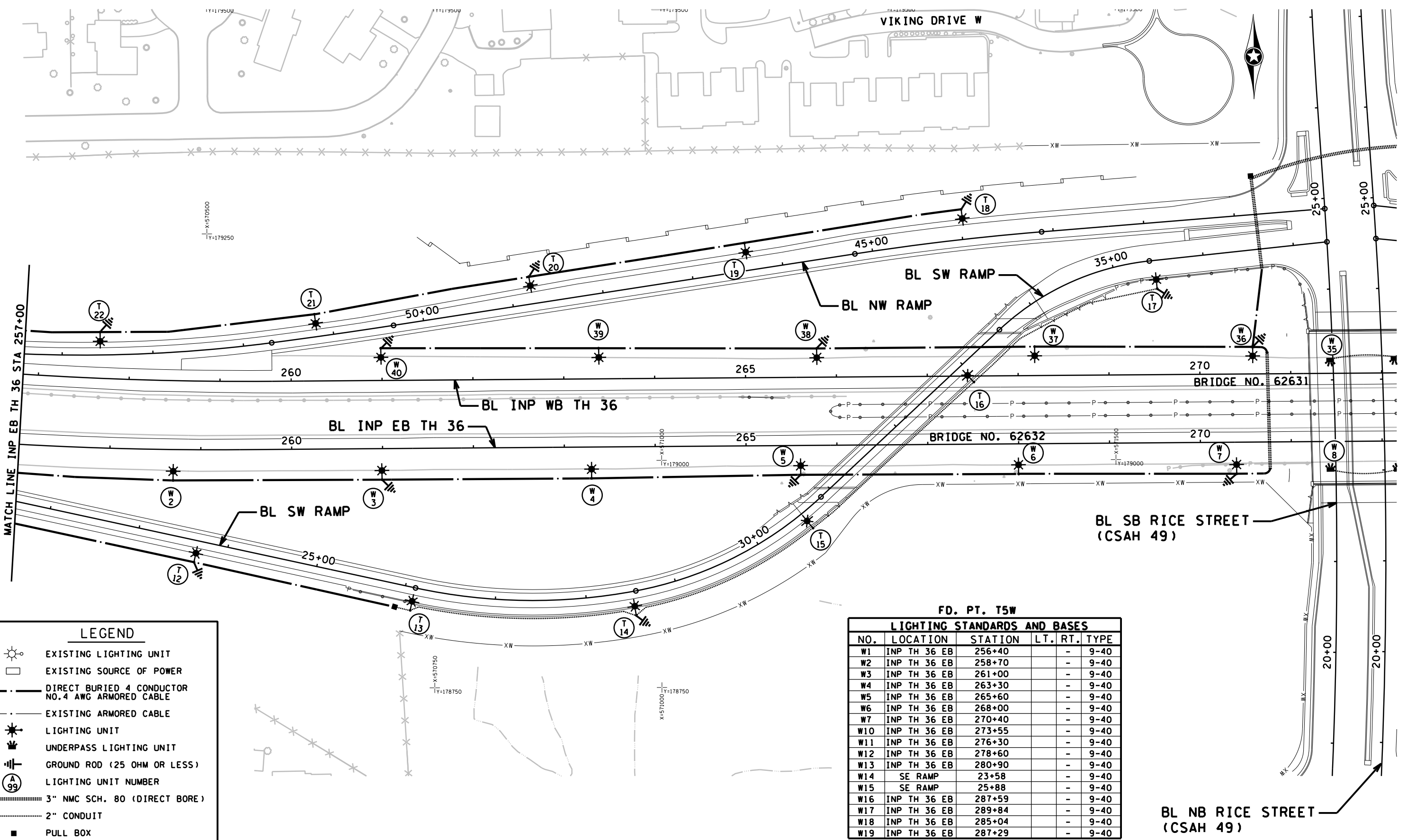
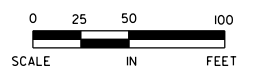


5:55:15 PM

12/15/2011

mitron

S:\PT\VR\Ramsp\108790\p1nshntsv\ramsp108790.lt.dgn



LEGEND

- EXISTING LIGHTING UNIT
- EXISTING SOURCE OF POWER
- DIRECT BURIED 4 CONDUCTOR NO. 4 AWG ARMORED CABLE
- EXISTING ARMORED CABLE
- LIGHTING UNIT
- UNDERPASS LIGHTING UNIT
- GROUND ROD (25 OHM OR LESS)
- LIGHTING UNIT NUMBER
- 3" NMC SCH. 80 (DIRECT BORE)
- 2" CONDUIT
- PULL BOX

FD. PT. T5W

LIGHTING STANDARDS AND BASES				
NO.	LOCATION	STATION	LT. RT.	TYPE
W1	INP TH 36 EB	256+40	-	9-40
W2	INP TH 36 EB	258+70	-	9-40
W3	INP TH 36 EB	261+00	-	9-40
W4	INP TH 36 EB	263+30	-	9-40
W5	INP TH 36 EB	265+60	-	9-40
W6	INP TH 36 EB	268+00	-	9-40
W7	INP TH 36 EB	270+40	-	9-40
W10	INP TH 36 EB	273+55	-	9-40
W11	INP TH 36 EB	276+30	-	9-40
W12	INP TH 36 EB	278+60	-	9-40
W13	INP TH 36 EB	280+90	-	9-40
W14	SE RAMP	23+58	-	9-40
W15	SE RAMP	25+88	-	9-40
W16	INP TH 36 EB	287+59	-	9-40
W17	INP TH 36 EB	289+84	-	9-40
W18	INP TH 36 EB	285+04	-	9-40
W19	INP TH 36 EB	287+29	-	9-40

DESIGN TEAM			
DRAWN BY:	MIT		
DESIGNER:	SRH,HLF		
CHECKED BY:	KLE		
NO.	BY	DATE	REVISIONS

I hereby certify that this plan was prepared by me or under my direct supervision and that I am a duly Licensed Professional Engineer under the laws of the State of Minnesota.

Certified By: *Bret W. Johnson* Lic. No. 25087
 Licensed Professional Engineer
 Printed Name: BRET W. JOHNSON Date: 3/3/2010



RAMSEY COUNTY, MINNESOTA
TH 36 / RICE STREET (CSAH 49)
 SP NO. 62-649-27 CTB, 6212-165 (TH 36)

LIGHTING PLAN
 INP EB TH 36 STA 257+00 TO 272+00

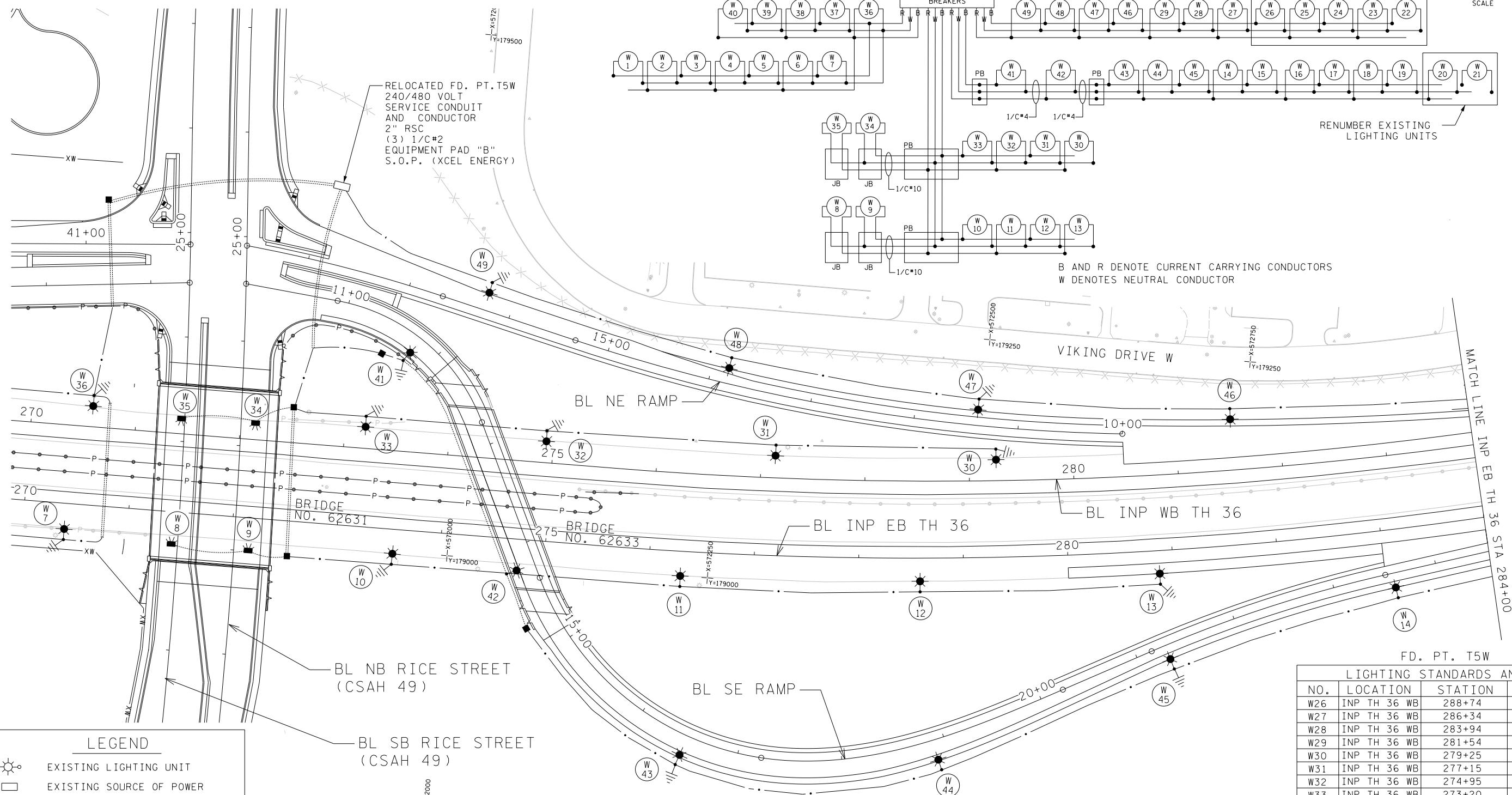
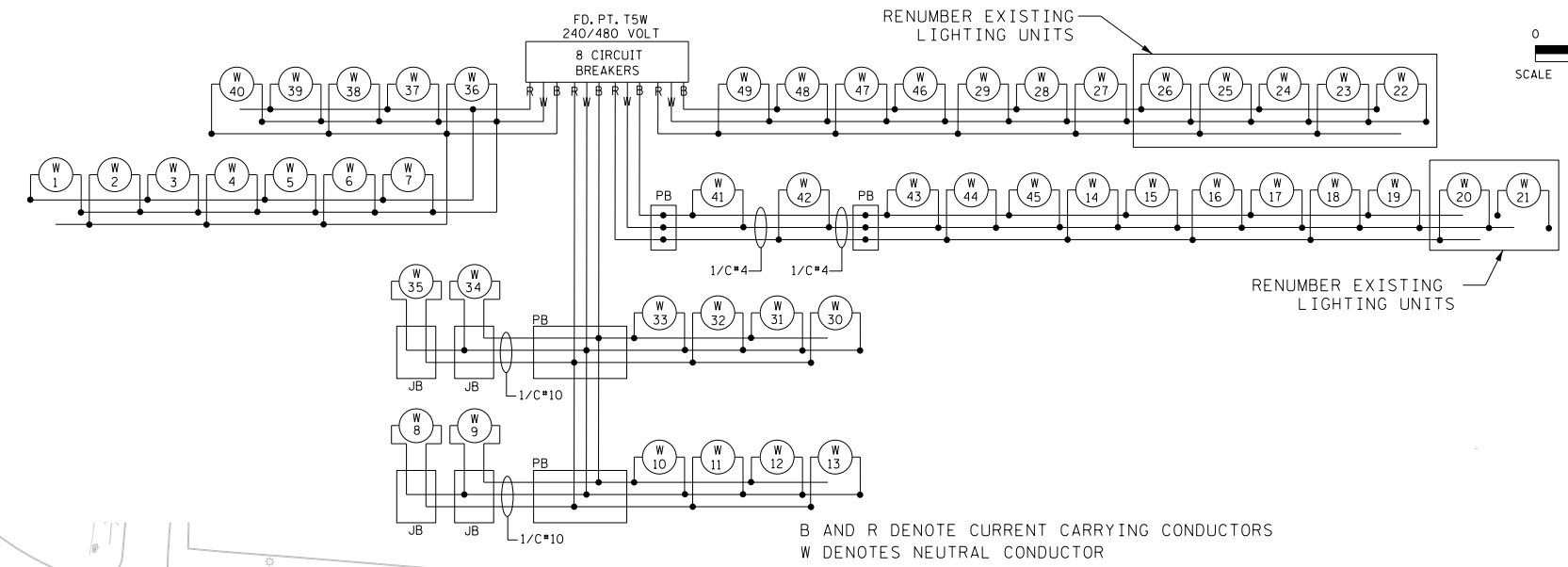
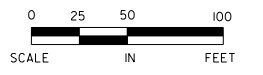
FILE NO.	338
RAMSP108790	
LT6 OF LTH	534

5:55:16 PM

12/15/2011

mtron

S:\PT\RAMSP\108790\dinshnt\ramsp108790.lt.dgn



LEGEND

- EXISTING LIGHTING UNIT
- EXISTING SOURCE OF POWER
- DIRECT BURIED 4 CONDUCTOR NO. 4 AWG ARMORED CABLE
- EXISTING ARMORED CABLE
- LIGHTING UNIT
- UNDERPASS LIGHTING UNIT
- GROUND ROD (25 OHM OR LESS)
- LIGHTING UNIT NUMBER
- 3" NMC SCH. 80 (DIRECT BORE)
- 2" CONDUIT
- PULL BOX

FD. PT. T5W

LIGHTING STANDARDS AND BASES

NO.	LOCATION	STATION	LT. RT.	TYPE
W26	INP TH 36 WB	288+74	-	9-40
W27	INP TH 36 WB	286+34	-	9-40
W28	INP TH 36 WB	283+94	-	9-40
W29	INP TH 36 WB	281+54	-	9-40
W30	INP TH 36 WB	279+25	-	9-40
W31	INP TH 36 WB	277+15	-	9-40
W32	INP TH 36 WB	274+95	-	9-40
W33	INP TH 36 WB	273+20	-	9-40
W36	INP TH 36 WB	270+58	-	9-40
W37	INP TH 36 WB	268+18	-	9-40
W38	INP TH 36 WB	265+78	-	9-40
W39	INP TH 36 WB	263+38	-	9-40
W40	INP TH 36 WB	260+98	-	9-40
W41	SE RAMP	11+77	-	9-40
W42	SE RAMP	14+22	-	6B-40
W43	SE RAMP	16+49	-	9-40
W44	SE RAMP	18+89	-	9-40
W45	SE RAMP	21+29	-	9-40
W46	NE RAMP	11+40	-	9-40
W47	NE RAMP	13+80	-	9-40
W48	NE RAMP	16+20	-	9-40

DESIGN TEAM			
DRAWN BY:	MIT		
DESIGNER:	SRH,HLR		
CHECKED BY:	KLE		
NO.	BY	DATE	REVISIONS

I hereby certify that this plan was prepared by me or under my direct supervision and that I am a duly Licensed Professional Engineer under the laws of the State of Minnesota.

Certified By: *Bret W. Johnson* Lic. No. 25087
 Licensed Professional Engineer
 Printed Name: BRET W. JOHNSON Date: 3/3/2010



RAMSEY COUNTY, MINNESOTA
 TH 36 / RICE STREET (CSAH 49)
 SP NO. 62-649-27 CTB, 6212-165 (TH 36)

LIGHTING PLAN
 INP EB TH 36 STA 272+00 TO 284+00

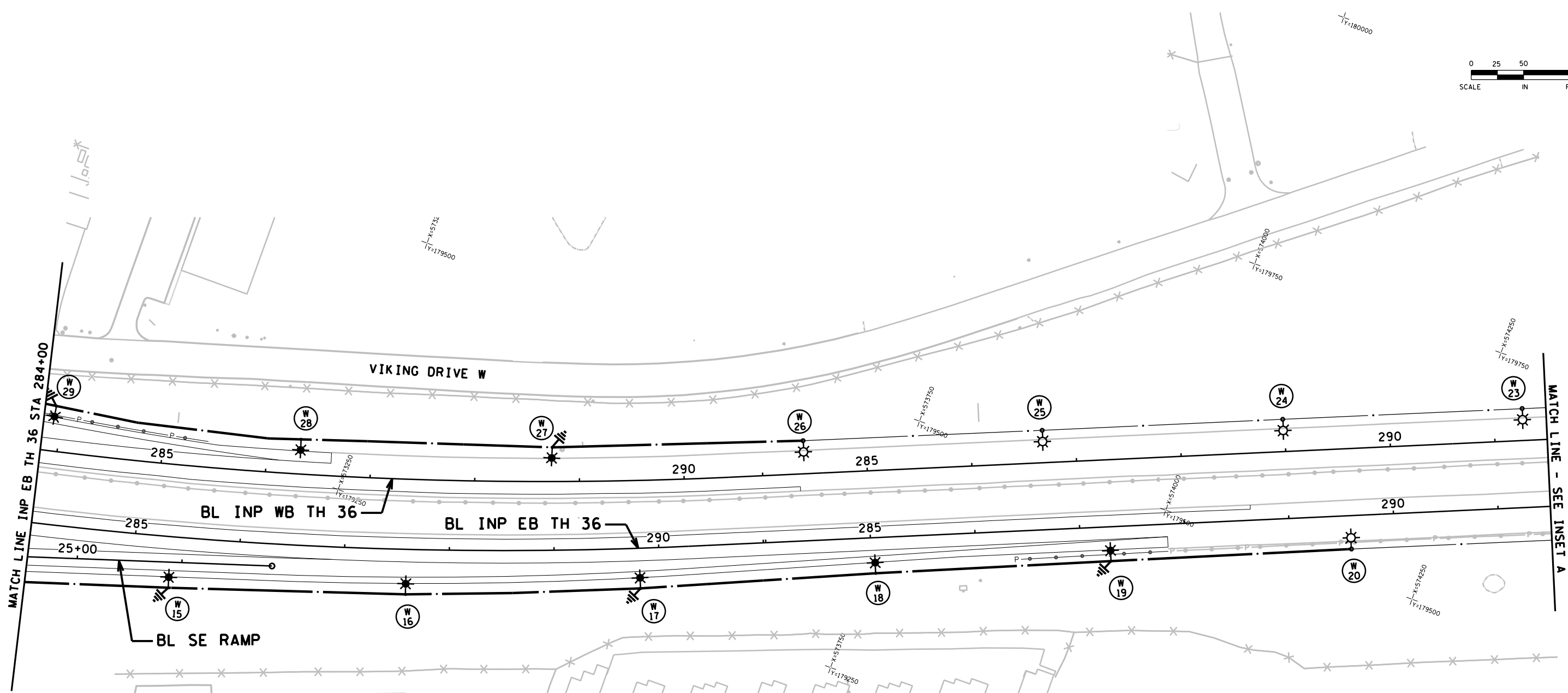
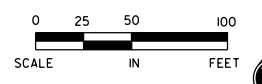
FILE NO. 339
 RAMSP108790
 LT7 OF LT11
 534

5:55:17 PM

12/15/2011

mtron

S:\PT\RAMSP\108790\dlnshntsv\ramsp108790.lt.dgn
4LT



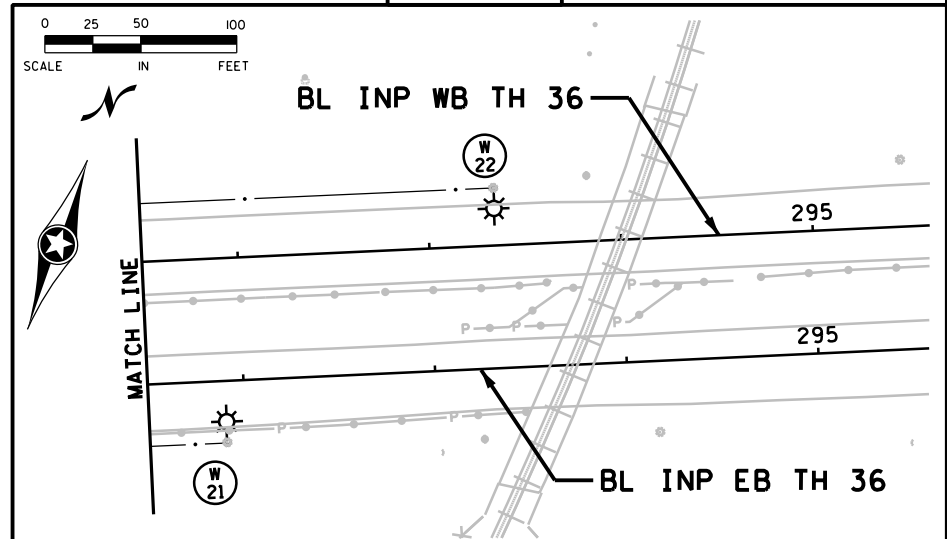
LEGEND

- EXISTING LIGHTING UNIT
- EXISTING SOURCE OF POWER
- DIRECT BURIED 4 CONDUCTOR NO.4 AWG ARMORED CABLE
- EXISTING ARMORED CABLE
- LIGHTING UNIT
- UNDERPASS LIGHTING UNIT
- GROUND ROD (25 OHM OR LESS)
- LIGHTING UNIT NUMBER
- 3" NMC SCH. 80 (DIRECT BORE)
- 2" CONDUIT
- PULL BOX

**FD. PT. T5W
LIGHTING STANDARDS AND BASES**

NO.	LOCATION	STATION	LT.	RT.	TYPE
W8	INP TH 36 EB	271+42	-	-	L
W9	INP TH 36 EB	272+15	-	-	L
W34	INP TH 36 WB	271+15	-	-	L
W35	INP TH 36 WB	271+42	-	-	L

INSET A



DESIGN TEAM			
DRAWN BY:	MIT		
DESIGNER:	SRH,HLF		
CHECKED BY:	KLE		
NO.	BY	DATE	REVISIONS

I hereby certify that this plan was prepared by me or under my direct supervision and that I am a duly Licensed Professional Engineer under the laws of the State of Minnesota.
 Certified By: *Bret W. Johnson* Lic. No. 25087
 Licensed Professional Engineer
 Printed Name: BRET W. JOHNSON Date: 3/3/2010



RAMSEY COUNTY, MINNESOTA
TH 36 / RICE STREET (CSAH 49)
 SP NO. 62-649-27 CTB, 6212-165 (TH 36)

LIGHTING PLAN
 INP EB TH 36 STA 284+00 TO 291+00

FILE NO.	340
RAMSP08790	
LT8 OF LTH	534