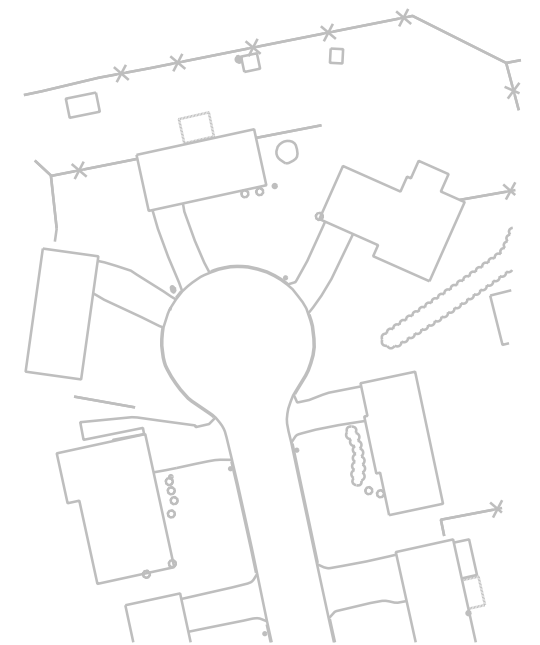
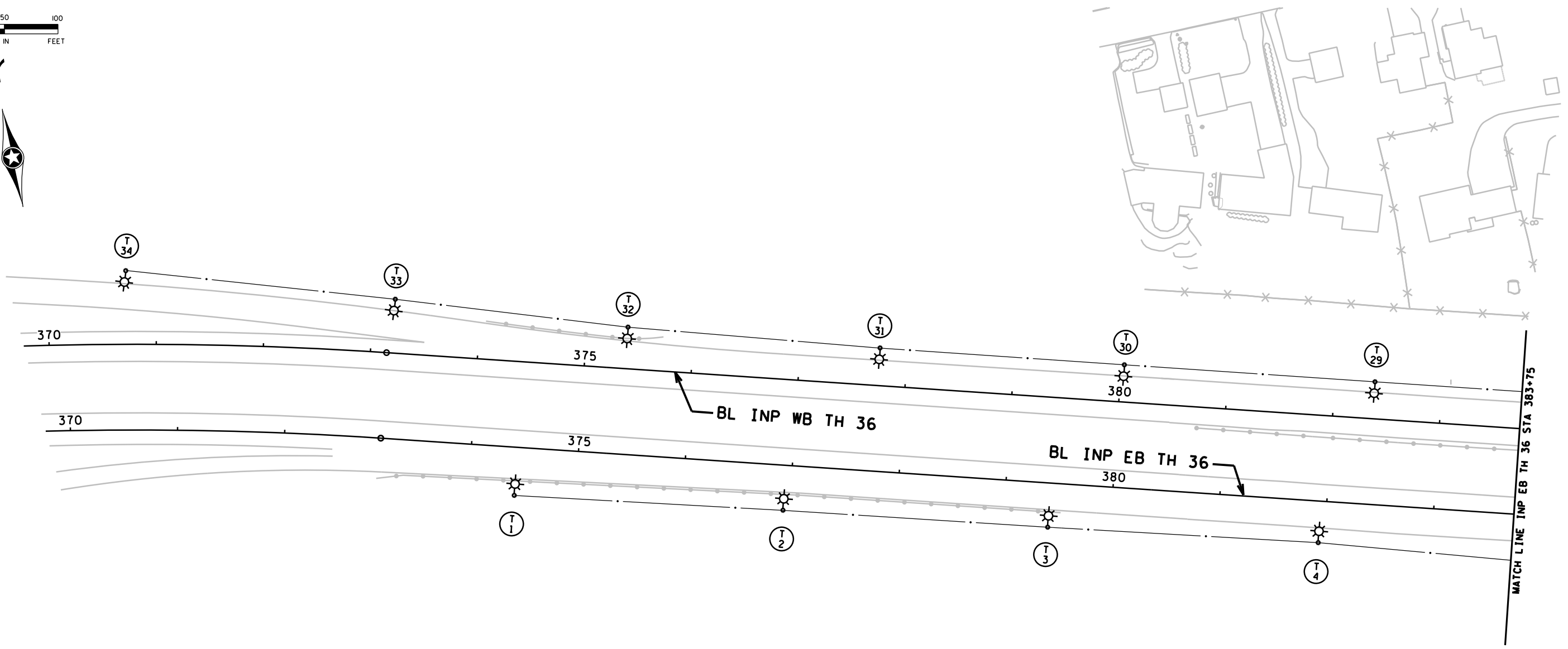
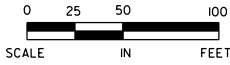


5:55:26 PM

12/15/2011

mtron

S:\PT\VR\Ramsp\108790\p\shst\vr\ramsp108790.lt.dgn



FD. PT. T5T

LIGHTING STANDARDS AND BASES					
NO.	LOCATION	STATION	LT.	RT.	TYPE
T1	TH 36 EB	374+43	-	-	13-40
T2	TH 36 EB	376+94	-	-	13-40
T3	TH 36 EB	379+42	-	-	13-40
T4	TH 36 EB	381+95	-	-	13-40
T5	TH 36 EB	384+21	-	-	13-40
T6	TH 36 EB	386+41	-	-	13-40
T7	TH 36 EB	388+69	-	-	13-40
T27	TH 36 WB	387+09	-	-	13-40
T28	TH 36 WB	384+70	-	-	13-40
T29	TH 36 WB	382+37	-	-	13-40
T30	TH 36 WB	380+03	-	-	13-40
T31	TH 36 WB	377+74	-	-	13-40
T32	TH 36 WB	375+38	-	-	13-40
T33	TH 36 WB	373+20	-	-	13-40
T34	TH 36 WB	370+72	-	-	13-40

LEGEND

- EXISTING LIGHTING UNIT
- EXISTING SOURCE OF POWER
- DIRECT BURIED 4 CONDUCTOR NO.4 AWG ARMORED CABLE
- EXISTING ARMORED CABLE
- LIGHTING UNIT
- UNDERPASS LIGHTING UNIT
- GROUND ROD (25 OHM OR LESS)
- LIGHTING UNIT NUMBER
- 3" NMC SCH. 80 (DIRECT BORE)
- 2" CONDUIT
- PULL BOX

DESIGN TEAM			
DRAWN BY:	MIT		
DESIGNER:	SRH,HLF		
CHECKED BY:	KLE		
NO.	BY	DATE	REVISIONS

I hereby certify that this plan was prepared by me or under my direct supervision and that I am a duly Licensed Professional Engineer under the laws of the State of Minnesota.
 Certified By: Lic. No. 25087
 Licensed Professional Engineer
 Printed Name: BRETT W. JOHNSON Date: 3/3/2010

PHONE: (651)490-2000
 3535 VADNAIS CENTER DR.
 ST. PAUL, MN 55110

RAMSEY COUNTY, MINNESOTA
TH 36 / RICE STREET (CSAH 49)
 SP NO. 62-649-27 CTB, 6212-165 (TH 36)

LIGHTING PLAN
 INP EB TH 36 STA 370+00 TO 383+75

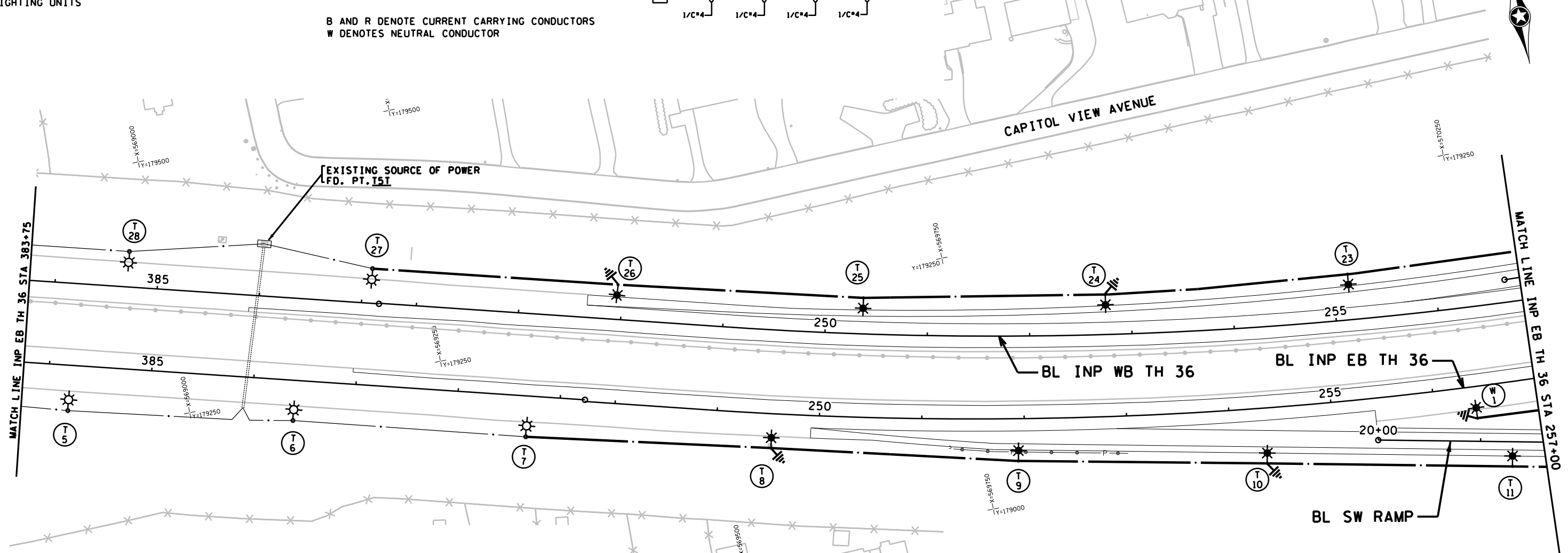
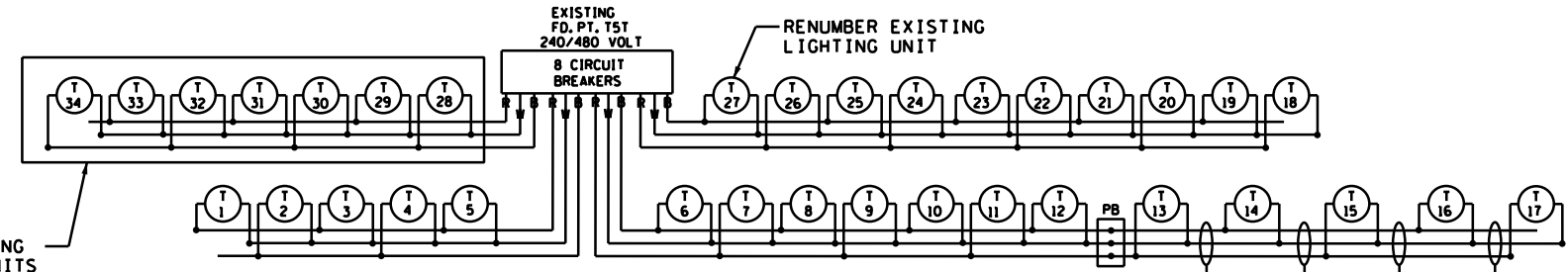
FILE NO.
 RAMSP108790
 OF
534

5:55:14 PM

12/15/2011

mtron

S:\PT\RAMSP\108790\dmshts\ramsp108790.lt.dgn



FD. PT. T5T

LIGHTING STANDARDS AND BASES					
NO.	LOCATION	STATION	LT.	RT.	TYPE
T8	TH 36 EB	249+54	-	-	9-40
T9	TH 36 EB	251+94	-	-	9-40
T10	TH 36 EB	254+34	-	-	9-40
T11	SW RAMP	21+31	-	-	9-40
T12	SW RAMP	23+71	-	-	9-40
T13	SW RAMP	26+11	-	-	6B-40
T14	SW RAMP	28+51	-	-	6B-40
T15	SW RAMP	30+58	-	-	6B-40
T16	SW RAMP	32+96	-	-	6B-40
T17	SW RAMP	35+46	-	-	9-40
T18	NW RAMP	43+98	-	-	9-40
T19	NW RAMP	46+38	-	-	9-40
T20	NW RAMP	48+78	-	-	9-40
T21	NW RAMP	51+18	-	-	9-40
T22	NW RAMP	53+58	-	-	9-40
T23	TH 36 WB	255+15	-	-	9-40
T24	TH 36 WB	252+75	-	-	9-40
T25	TH 36 WB	250+35	-	-	9-40
T26	TH 36 WB	247+94	-	-	9-40

LEGEND

- EXISTING LIGHTING UNIT
- EXISTING SOURCE OF POWER
- DIRECT BURIED 4 CONDUCTOR NO.4 AWG ARMORED CABLE
- EXISTING ARMORED CABLE
- LIGHTING UNIT
- UNDERPASS LIGHTING UNIT
- GROUND ROD (25 OHM OR LESS)
- LIGHTING UNIT NUMBER
- 3" NMC SCH. 80 (DIRECT BORE)
- 2" CONDUIT
- PULL BOX

DESIGN TEAM			
DRAWN BY:	MIT		
DESIGNER:	SRH,HLF		
CHECKED BY:	KLE		
NO.	BY	DATE	REVISIONS

I hereby certify that this plan was prepared by me or under my direct supervision and that I am a duly Licensed Professional Engineer under the laws of the State of Minnesota.

Certified By: *Bret W. Johnson* Lic. No. 25087
 Licensed Professional Engineer
 Printed Name: BRET W. JOHNSON Date: 3/3/2010

PHONE: (651)490-2000
 3535 VADNAIS CENTER DR.
 ST. PAUL, MN 55110

RAMSEY COUNTY, MINNESOTA
TH 36 / RICE STREET (CSAH 49)
 SP NO. 62-649-27 CTB, 6212-165 (TH 36)

LIGHTING PLAN
 INP EB TH 36 STA 383+75 TO 257+00

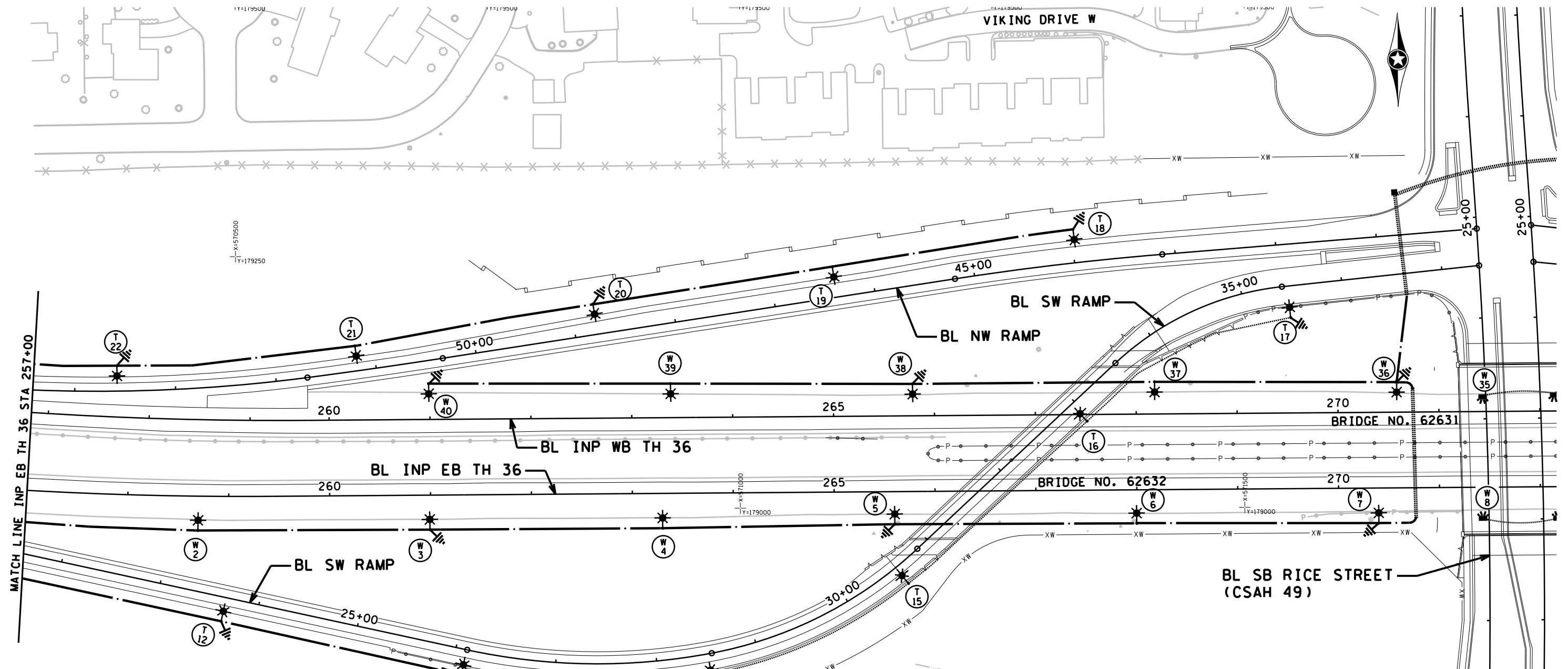
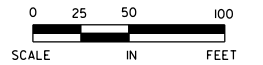
FILE NO.	337
RAMSP108790	
LT5 OF LTH	534

5:55:15 PM

12/15/2011

mtron

S:\PT\VR\Ramsp\108790\plans\tr\ramsp108790.lt.dgn



MATCH LINE INP EB TH 36 STA 257+00

LEGEND	
	EXISTING LIGHTING UNIT
	EXISTING SOURCE OF POWER
	DIRECT BURIED 4 CONDUCTOR NO. 4 AWG ARMORED CABLE
	EXISTING ARMORED CABLE
	LIGHTING UNIT
	UNDERPASS LIGHTING UNIT
	GROUND ROD (25 OHM OR LESS)
	LIGHTING UNIT NUMBER
	3" NMC SCH. 80 (DIRECT BORE)
	2" CONDUIT
	PULL BOX

FD. PT. T5W				
LIGHTING STANDARDS AND BASES				
NO.	LOCATION	STATION	LT. RT.	TYPE
W1	INP TH 36 EB	256+40	-	9-40
W2	INP TH 36 EB	258+70	-	9-40
W3	INP TH 36 EB	261+00	-	9-40
W4	INP TH 36 EB	263+30	-	9-40
W5	INP TH 36 EB	265+60	-	9-40
W6	INP TH 36 EB	268+00	-	9-40
W7	INP TH 36 EB	270+40	-	9-40
W10	INP TH 36 EB	273+55	-	9-40
W11	INP TH 36 EB	276+30	-	9-40
W12	INP TH 36 EB	278+60	-	9-40
W13	INP TH 36 EB	280+90	-	9-40
W14	SE RAMP	23+58	-	9-40
W15	SE RAMP	25+88	-	9-40
W16	INP TH 36 EB	287+59	-	9-40
W17	INP TH 36 EB	289+84	-	9-40
W18	INP TH 36 EB	285+04	-	9-40
W19	INP TH 36 EB	287+29	-	9-40

DESIGN TEAM			
DRAWN BY:	MIT		
DESIGNER:	SRH,HLF		
CHECKED BY:	KLE		
NO.	BY	DATE	REVISIONS

I hereby certify that this plan was prepared by me or under my direct supervision and that I am a duly Licensed Professional Engineer under the laws of the State of Minnesota.
 Certified By: *Bret W. Johnson* Lic. No. 25087
 Printed Name: BRETT W. JOHNSON Date: 3/3/2010



RAMSEY COUNTY, MINNESOTA
TH 36 / RICE STREET (CSAH 49)
 SP NO. 62-649-27 CTB, 6212-165 (TH 36)

LIGHTING PLAN
 INP EB TH 36 STA 257+00 TO 272+00

FILE NO.	338
RAMSP108790	
LT6 OF LTH	534