

ABANDON CABLE

BEGIN S.P. 6212-185 (TH 36)
REF PT. 001+00.063

TH 36 WB

TH 36 EB

FD. PT. T5F
240/480 VOLT

PULL BOX

PULL BOX

3-1/C 10 AWG

3-1/C 10 AWG

B AND R DENOTE CURRENT CARRYING CONDUCTORS
W DENOTES NEUTRAL CONDUCTOR
GROUND NOT SHOWN

LEGEND

- LIGHTING UNIT
- INPLACE LIGHTING UNIT
- INPLACE UNDERPASS LUMINAIRE
- INPLACE HANDHOLE
- INPLACE CONDUIT
- DIRECT BURIED LIGHTING CABLE 4/C 4 AWG
- PERMANENT GROUND ROD (25 OHMS OR LESS)
- 3" PVC DIRECTIONAL BORED (UNLESS NOTED OTHERWISE)
- SERVICE CABINET
- HANDHOLE
- SOURCE OF POWER (APPROXIMATE LOCATION)
- LIGHTING NUMBER
- MNDOT ROW

AS-BUILT

DATE: 3/12/2018 3:09:05 PM
PATH & FILENAME: G:\1010964-000\Cad\Plan\10964-000_ip01.dgn

NO.	DATE	BY	CHK	REVISIONS

Design By: ES
 Plan By: MF
 Checked By: ES
 Approved By: SD

I HEREBY CERTIFY THAT THIS PLAN WAS PREPARED BY ME OR UNDER MY DIRECT SUPERVISION AND THAT I AM A DULY LICENSED PROFESSIONAL ENGINEER UNDER THE LAWS OF THE STATE OF MINNESOTA.

Sean Delmore
 SEAN DELMORE, PE
 DATE: 03/12/18 LICENSE NO. 40845

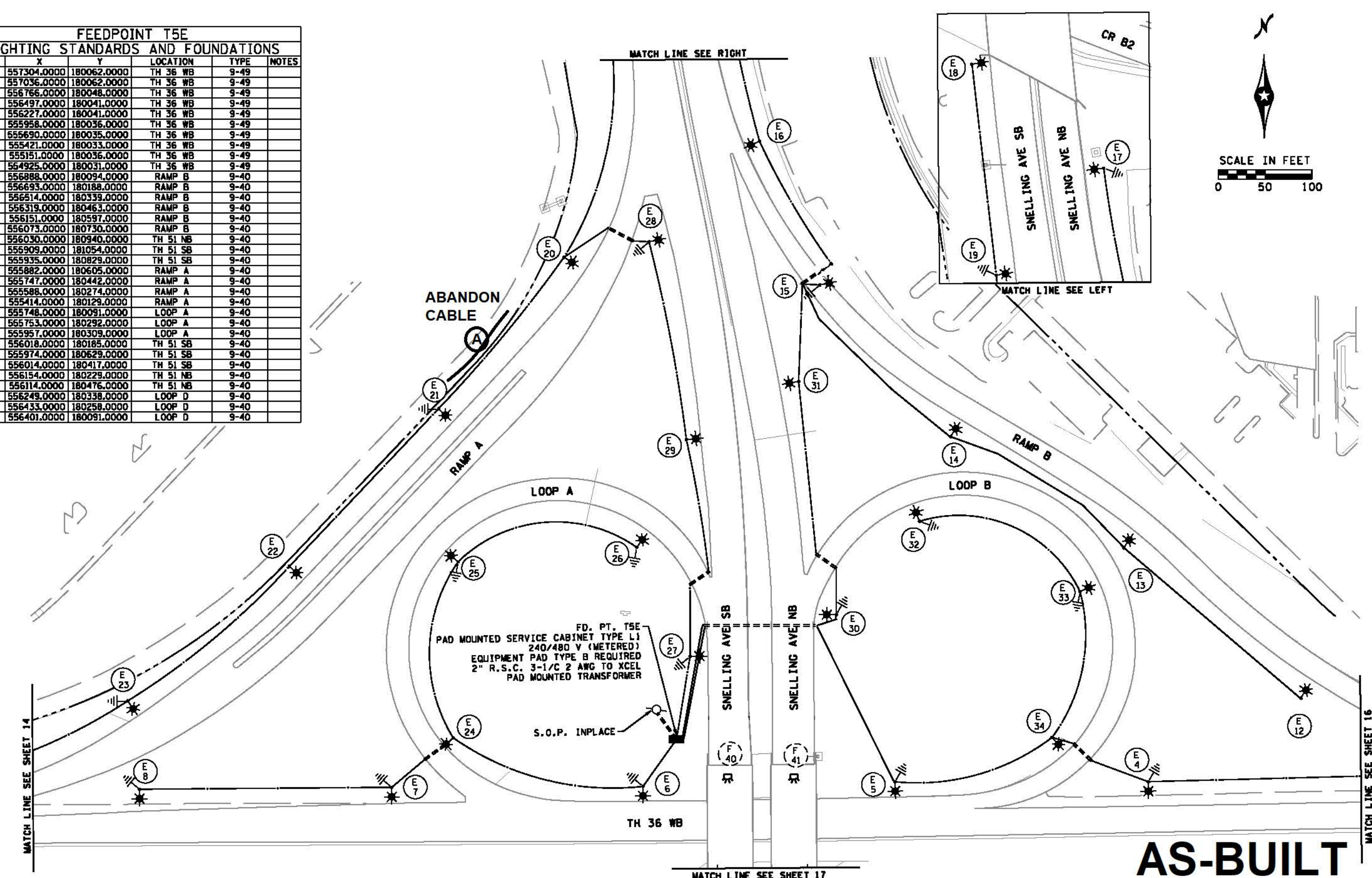


LIGHTING REPLACEMENT ON
TH 36 AND TH 35E
MNDOT

SYSTEM A
 TH 36: SNELLING AVE TO TH 61
 S.P. 6212-185 (TH36), S.P. 6211-106 (TH36),
 S.P. 1982-198 (TH35E), S.P. 6280-402 (TH35E)

SHEET
14
OF
46
SHEETS

FEEDPOINT T5E					
LIGHTING STANDARDS AND FOUNDATIONS					
NO.	X	Y	LOCATION	TYPE	NOTES
1	557304.0000	180062.0000	TH 36 WB	9-49	
2	557036.0000	180062.0000	TH 36 WB	9-49	
3	556766.0000	180048.0000	TH 36 WB	9-49	
4	556497.0000	180041.0000	TH 36 WB	9-49	
5	556227.0000	180041.0000	TH 36 WB	9-49	
6	555958.0000	180036.0000	TH 36 WB	9-49	
7	555690.0000	180035.0000	TH 36 WB	9-49	
8	555421.0000	180033.0000	TH 36 WB	9-49	
9	555151.0000	180036.0000	TH 36 WB	9-49	
10	554925.0000	180031.0000	TH 36 WB	9-49	
11	556888.0000	180094.0000	RAMP B	9-40	
12	556693.0000	180188.0000	RAMP B	9-40	
13	556514.0000	180339.0000	RAMP B	9-40	
14	556319.0000	180463.0000	RAMP B	9-40	
15	556151.0000	180597.0000	RAMP B	9-40	
16	556073.0000	180730.0000	RAMP B	9-40	
17	556030.0000	180940.0000	TH 51 NB	9-40	
18	555909.0000	181054.0000	TH 51 SB	9-40	
19	555935.0000	180829.0000	TH 51 SB	9-40	
20	555882.0000	180605.0000	RAMP A	9-40	
21	555747.0000	180442.0000	RAMP A	9-40	
22	555588.0000	180274.0000	RAMP A	9-40	
23	555414.0000	180129.0000	RAMP A	9-40	
24	555748.0000	180091.0000	LOOP A	9-40	
25	555753.0000	180292.0000	LOOP A	9-40	
26	555957.0000	180309.0000	LOOP A	9-40	
27	556018.0000	180185.0000	TH 51 SB	9-40	
28	555974.0000	180629.0000	TH 51 SB	9-40	
29	556014.0000	180417.0000	TH 51 SB	9-40	
30	556154.0000	180229.0000	TH 51 NB	9-40	
31	556114.0000	180476.0000	TH 51 NB	9-40	
32	556249.0000	180338.0000	LOOP D	9-40	
33	556433.0000	180258.0000	LOOP D	9-40	
34	556401.0000	180091.0000	LOOP D	9-40	



T5E METER ADDRESS: 2275 SNELLING AVE N, ROSEVILLE, MN 55113

AS-BUILT
SEE LEGEND SHEET 14

DATE: 3/12/2018 3:09:06 PM
PATH & FILENAME: G:\1010964-000\1010964-000\1010964-000_1p02.dgn

NO.	DATE	BY	CHK	REVISIONS

Design By: ES
 Plan By: MF
 Checked By: ES
 Approved By: SD

I HEREBY CERTIFY THAT THIS PLAN WAS PREPARED BY ME OR UNDER MY DIRECT SUPERVISION AND THAT I AM A DULY LICENSED PROFESSIONAL ENGINEER UNDER THE LAWS OF THE STATE OF MINNESOTA.

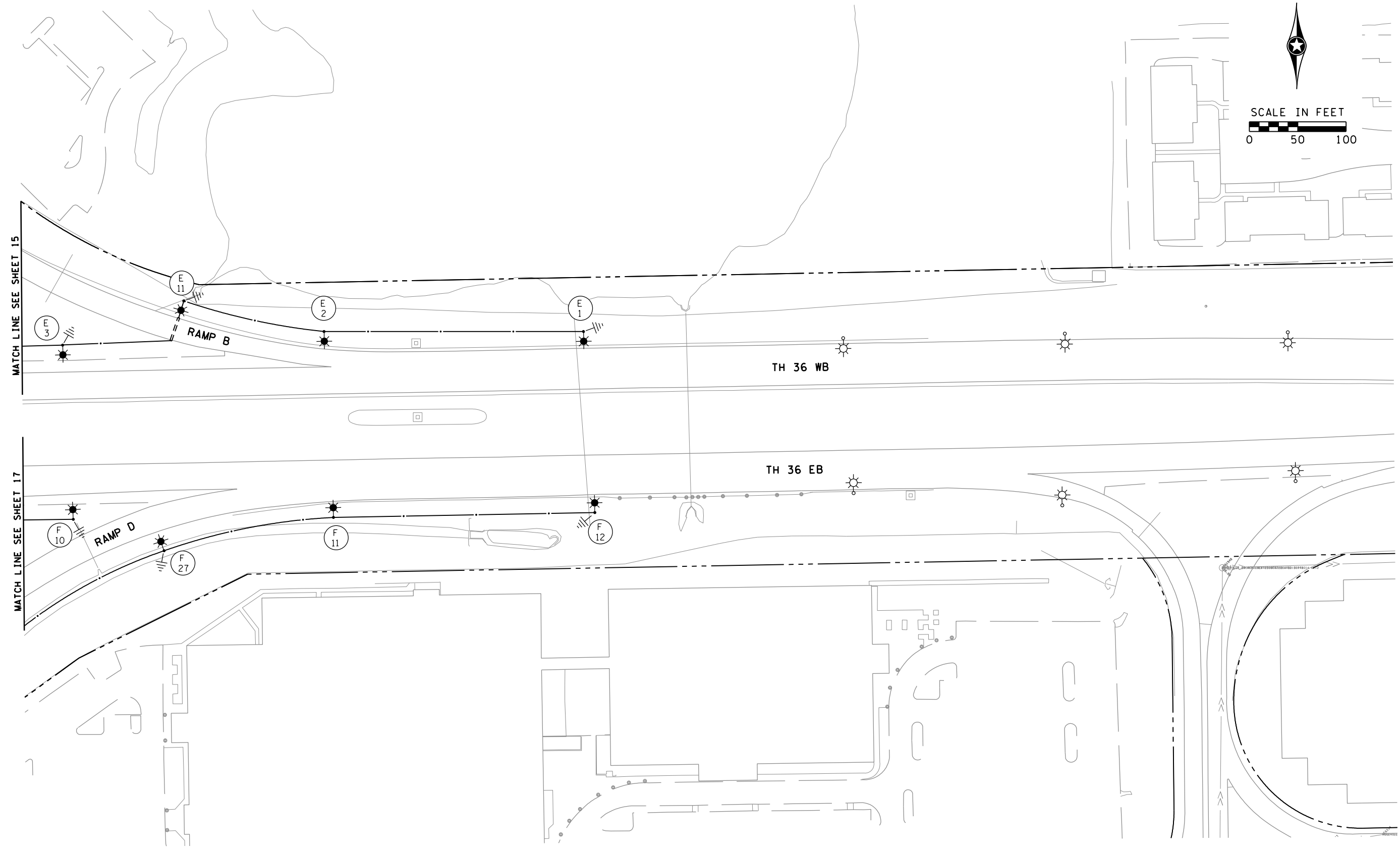
Sean Delmore
 SEAN DELMORE, PE
 DATE: 03/12/18 LICENSE NO. 40845



LIGHTING REPLACEMENT ON
TH 36 AND TH 35E
MNDOT

SYSTEM A
 TH 36: SNELLING AVE TO TH 61
 S.P.6212-185 (TH36), SP.6211-106 (TH36),
 S.P.1982-198 (TH35E), S.P.6280-402 (TH35E)

SHEET
15
OF
46
SHEETS



MATCH LINE SEE SHEET 15

MATCH LINE SEE SHEET 17

SEE LEGEND SHEET 14

DATE: 3/12/2018 3:09:08 PM
PATH & FILENAME: K:\1010964-000\Cad\Plan\10964-000_lp03.dgn

NO.	DATE	BY	CHK	REVISIONS

Design By: ES
Plan By: MF
Checked By: ES
Approved By: SD

I HEREBY CERTIFY THAT THIS PLAN WAS PREPARED BY ME OR UNDER MY DIRECT SUPERVISION AND THAT I AM A DULY LICENSED PROFESSIONAL ENGINEER UNDER THE LAWS OF THE STATE OF MINNESOTA.

Sean Delmore
SEAN DELMORE, PE
DATE: 03/12/18 LICENSE NO. 40845



LIGHTING REPLACEMENT ON
TH 36 AND TH 35E
MNDOT

SYSTEM A
TH 36: SNELLING AVE TO TH 61
S.P.6212-185 (TH36), SP.6211-106 (TH36),
S.P.1982-198 (TH35E), S.P.6280-402 (TH35E)

SHEET
16
OF
46
SHEETS