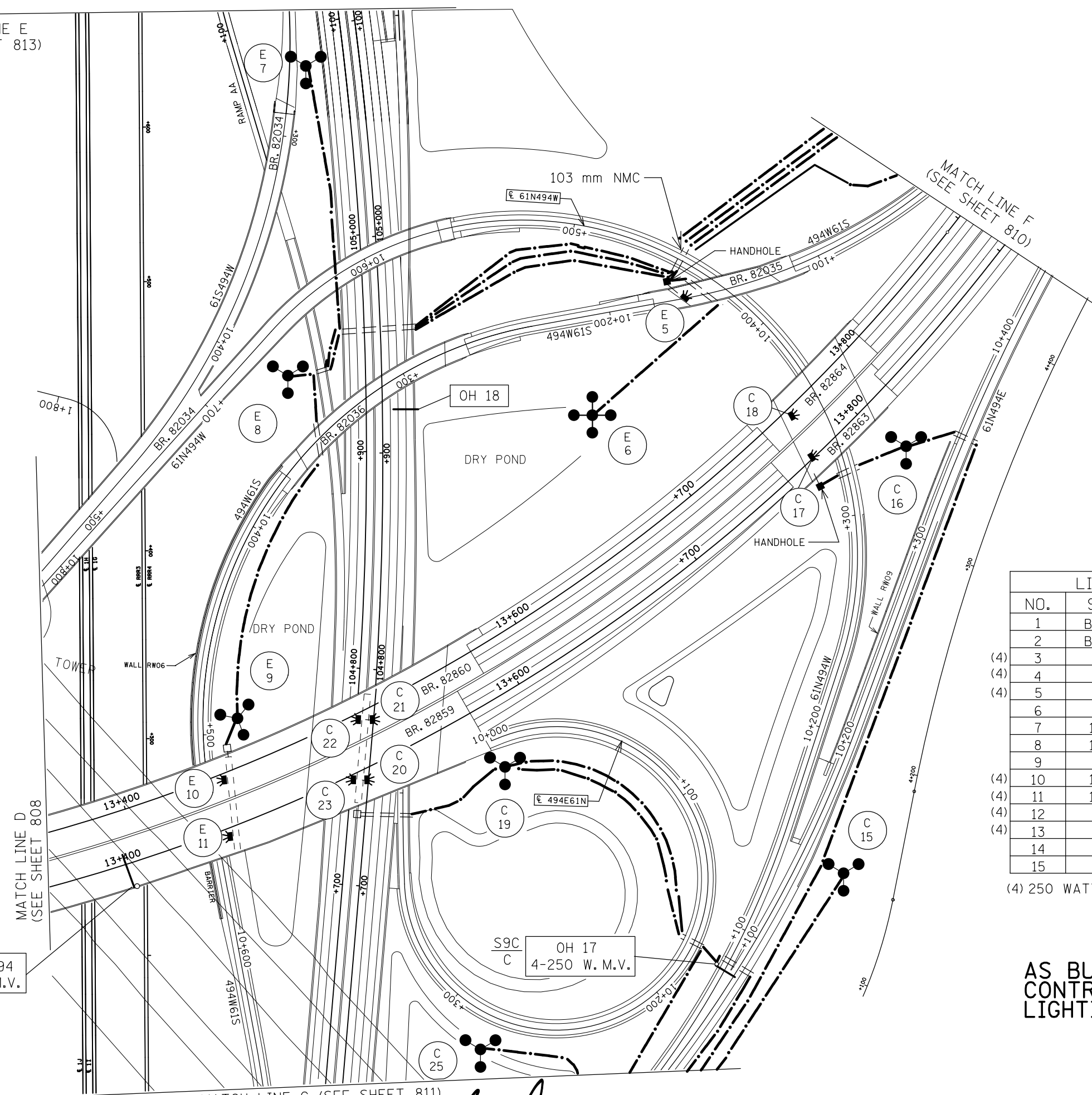


MATCH LINE E
(SEE SHEET 813)



FD. PT. S9E

LIGHTING STANDARDS AND BASES					
NO.	STATION	LT.	RT.	LOCATION	TYPE
1	BY OTHERS	-		T.H. 494 W.B.L.	3-30.5
2	BY OTHERS	-		T.H. 494 W.B.L.	3-30.5
(4)	3		-	RAMP 494W61S	L
(4)	4		-	RAMP 494W61S	L
(4)	5		-	RAMP 61N494W	L
6	13+688	57m		T.H. 494 W.B.L.	4-36.5
7	105+080	18m		T.H. 61 S.B.L.	3-30.5
8	104+936	36m		T.H. 61 S.B.L.	3-30.5
9	13+463	20m		T.H. 494 W.B.L.	3-36.5
(4)	10		-	RAMP 494W61S	L
(4)	11		-	RAMP 494W61S	L
(4)	12		-	RAMP 61N494E	L
(4)	13		-	RAMP 61N494E	L
14	12+085		24m	T.H. 494 E.B.L.	3-30.5
15	14+385		26m	T.H. 494 E.B.L.	3-30.5

(4) 250 WATT HIGH PRESSURE SODIUM UNDERPASS FIXTURE

S9A
A OH 353-494
4-250 W. M.V.

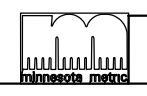
AS BUILT 1-2013
CONTRACTOR FIELD CHANGES:
LIGHTING CABLE

MATCH LINE G (SEE SHEET 811)

CERTIFIED BY *Seneca Johnson*
LICENSED PROFESSIONAL ENGINEER

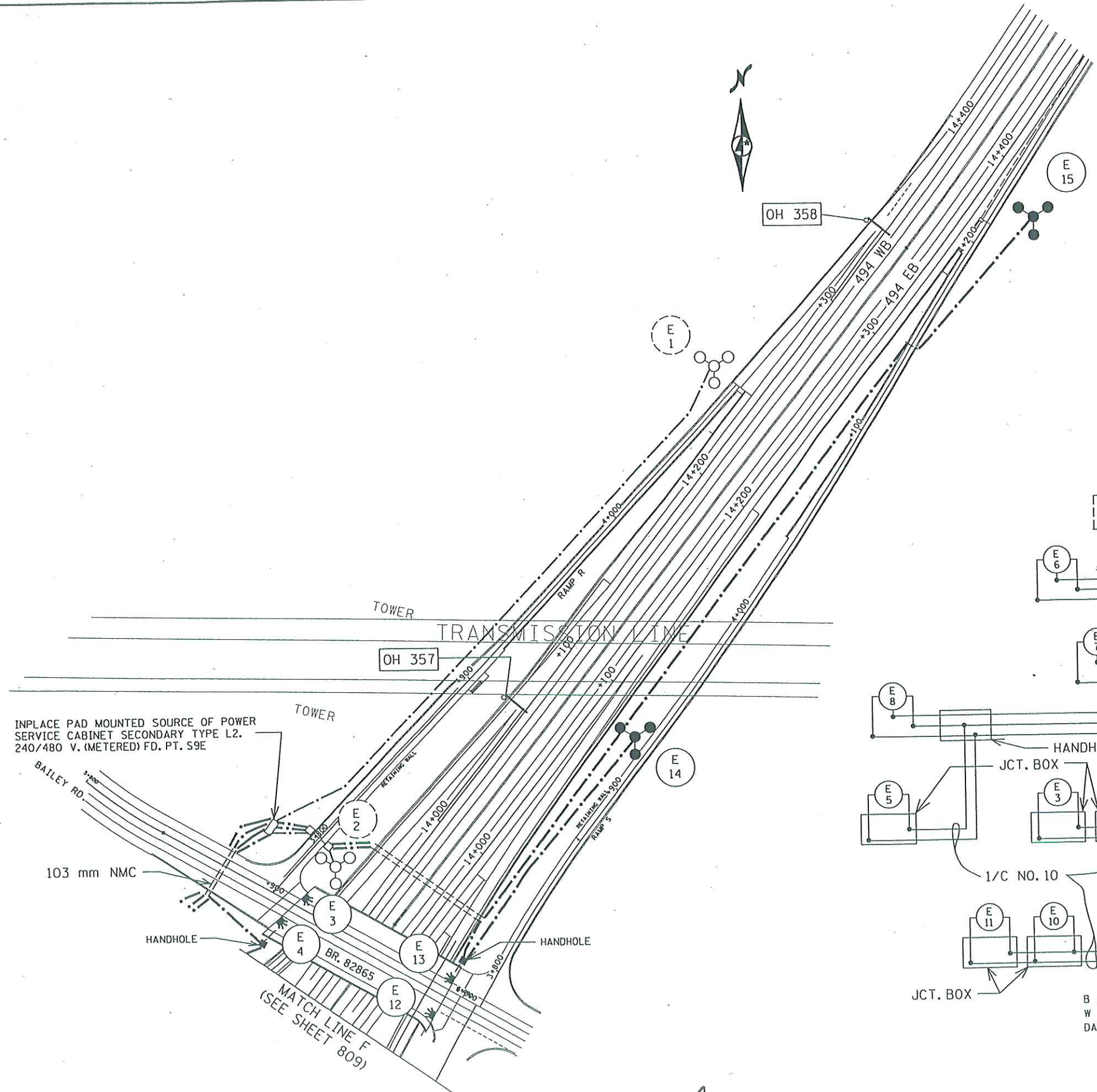
LIC. NO. 40945

State Proj. No. 8285-80 (T.H. 494)



LIGHTING PLAN

Sheet No. 809 of 980 Sheets



OH 358

E 15

E 1

OH 357

E 14

INPLACE PAD MOUNTED SOURCE OF POWER SERVICE CABINET SECONDARY TYPE L2. 240/480 V. (METERED) FD. PT. S9E

103 mm NMC

HANDHOLE

BR. 82865

E 13

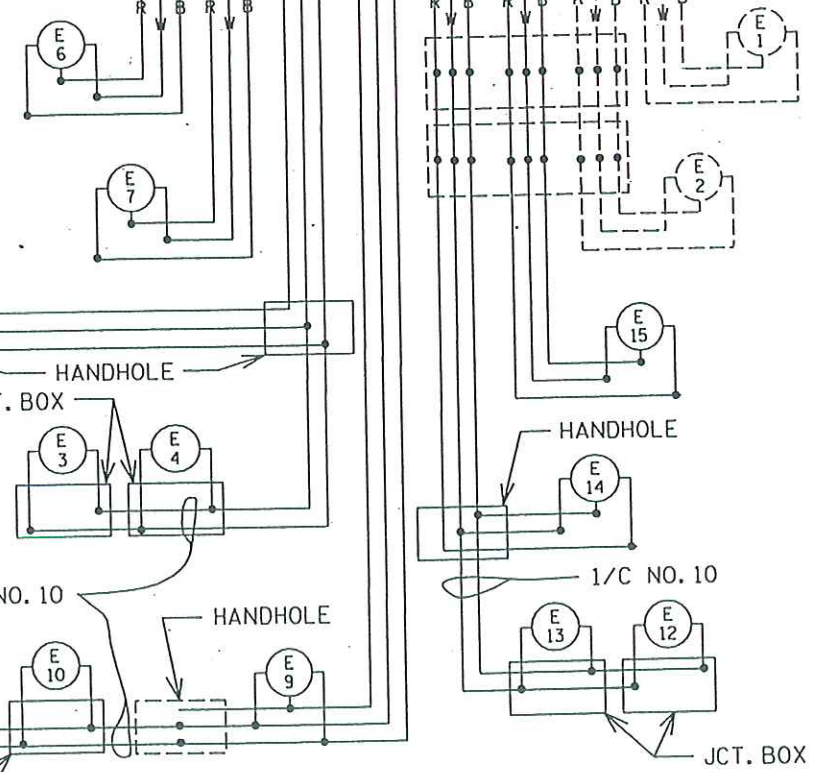
HANDHOLE

E 12

MATCH LINE F (SEE SHEET 809)

FD. PT. S9E BY OTHERS 240/480 VOLT

CIRCUIT BREAKERS BY OTHERS



HANDHOLE

JCT. BOX

1/C NO. 10

HANDHOLE

JCT. BOX

B AND R DENOTE CURRENT CARRYING CONDUCTORS W DENOTES NEUTRAL CONDUCTOR DASHED LINES DENOTE INPLACE OR BY OTHERS

JCT. BOX

LIGHTING PLAN

Sheet No. 810 of 980 Sheets

CERTIFIED BY *Sam DeLorenzo*
LICENSED PROFESSIONAL ENGINEER

LIC. NO. 40945

State Proj. No. 8285-80 (T.H. 494)