

SHEET TOTAL

- 32 - 200 WATT HIGH PRESSURE SODIUM LIGHTING UNITS
- 2 - 250 WATT HIGH PRESSURE SODIUM UNDERPASS LIGHTS
- 7 - 250 WATT MERCURY VAPOR SIGN LIGHTS

- LEGEND
- SOURCE OF POWER (PAD MOUNTED)
 - ⊕ F&I PERMANENT GROUND ROD 25 OHMS OR LESS
 - RIGID STEEL CONDUIT INP.
 - ⊙ 40' LIGHTING UNIT - 200 WATT HIGH PRESSURE SODIUM
 - DIRECT BURIED POWER CABLE - 3 CONDUCTOR NO. 4 ARMORED CABLE (A.W.G.) SEE SPEC. NO. 3804 OR 3805.
 - ⊙ UNDERPASS LIGHTING UNIT - 200 WATT HIGH PRESSURE SODIUM
 - ⊙ OVERHEAD ILLUMINATED SIGN BY OTHERS
 - * F&I ONE ADDITIONAL 2" RIGID STEEL CONDUIT ELBOW
 - ⊙ 49' LIGHTING UNIT - 400 WATT HIGH PRESSURE SODIUM

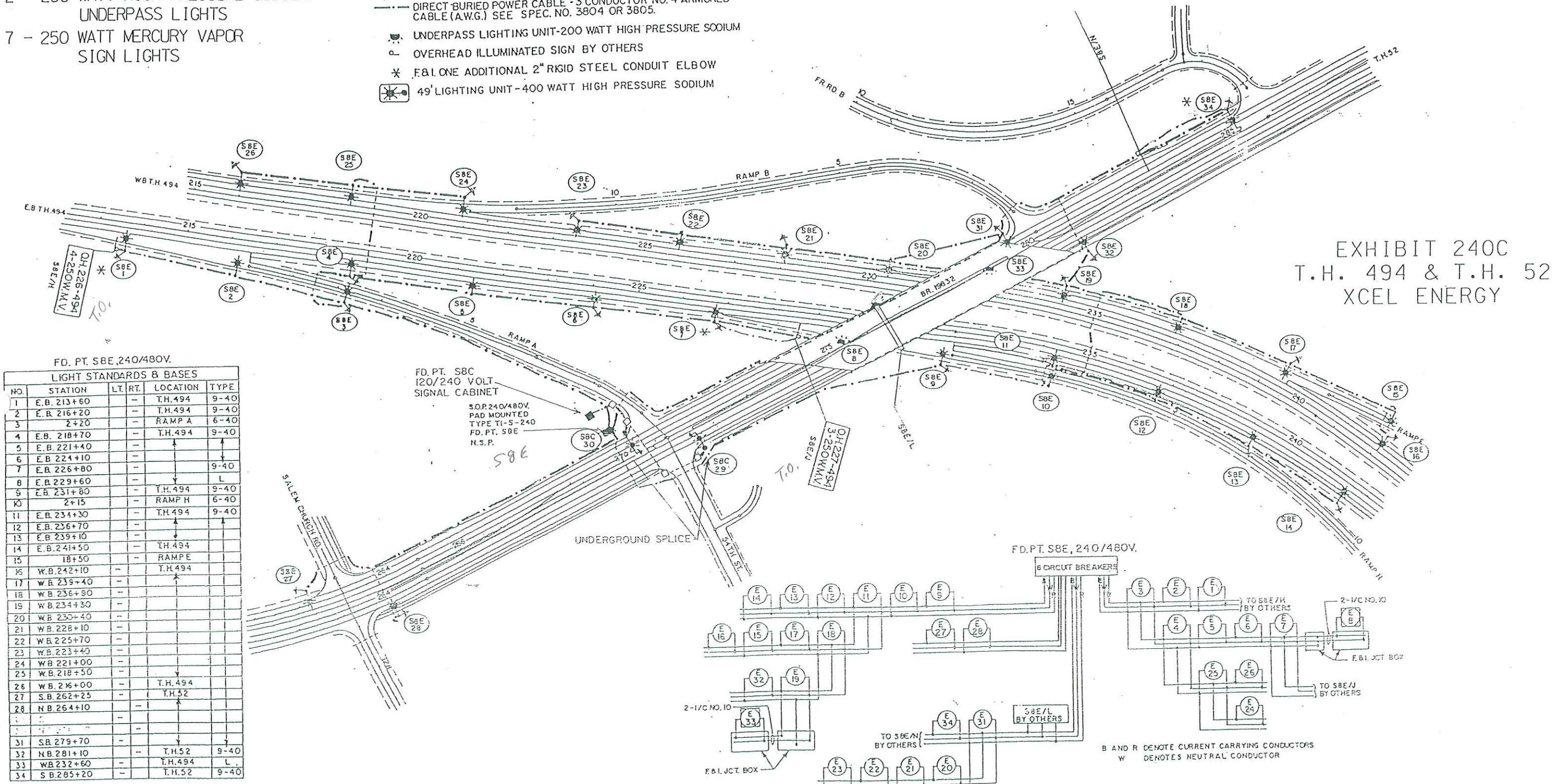
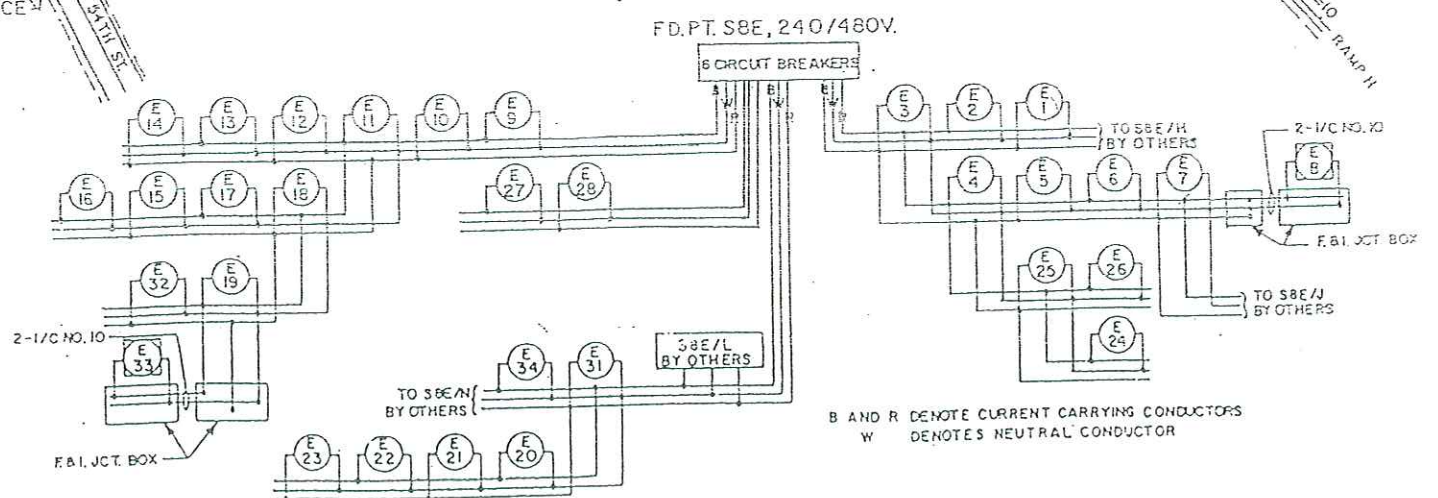


EXHIBIT 240C
T.H. 494 & T.H. 52
XCEL ENERGY

FD. PT. SBE, 240/480V.

LIGHT STANDARDS & BASES					
NO.	STATION	LT.	RT.	LOCATION	TYPE
1	E.B. 213+60	-	-	T.H. 494	9-40
2	E.B. 216+20	-	-	T.H. 494	9-40
3	2+20	-	-	RAMP A	6-40
4	E.B. 218+70	-	-	T.H. 494	9-40
5	E.B. 221+40	-	-		
6	E.B. 224+10	-	-		
7	E.B. 226+80	-	-		9-40
8	E.B. 229+60	-	-		L
9	E.B. 231+80	-	-	T.H. 494	9-40
10	2+15	-	-	RAMP H	6-40
11	E.B. 234+30	-	-	T.H. 494	9-40
12	E.B. 236+70	-	-		
13	E.B. 239+10	-	-		
14	E.B. 241+50	-	-	T.H. 494	
15	18+50	-	-	RAMP E	
16	W.B. 242+10	-	-	T.H. 494	
17	W.B. 239+40	-	-		
18	W.B. 236+90	-	-		
19	W.B. 234+30	-	-		
20	W.B. 230+40	-	-		
21	W.B. 228+10	-	-		
22	W.B. 225+70	-	-		
23	W.B. 223+40	-	-		
24	W.B. 221+00	-	-		
25	W.B. 218+50	-	-		
26	W.B. 216+00	-	-	T.H. 494	
27	S.B. 262+25	-	-	T.H. 52	
28	N.B. 264+10	-	-		
29					
30					
31	S.B. 279+70	-	-		
32	N.B. 281+10	-	-	T.H. 52	9-40
33	W.B. 232+60	-	-	T.H. 494	L
34	S.B. 285+20	-	-	T.H. 52	9-40

FD. PT. SBC
120/240 VOLT
SIGNAL CABINET
S.O.P. 240/480V.
PAD MOUNTED
TYPE TI-S-240
FD. PT. SBE
N.S.P.



B AND R DENOTE CURRENT CARRYING CONDUCTORS
W DENOTES NEUTRAL CONDUCTOR

LOCATE 40' LIGHT POLES 9' BEHIND EDGE OF SHOULDER OR FACE OF CURB OR AS DIRECTED BY THE ENGINEER.

FD. PT. S08E, S08C