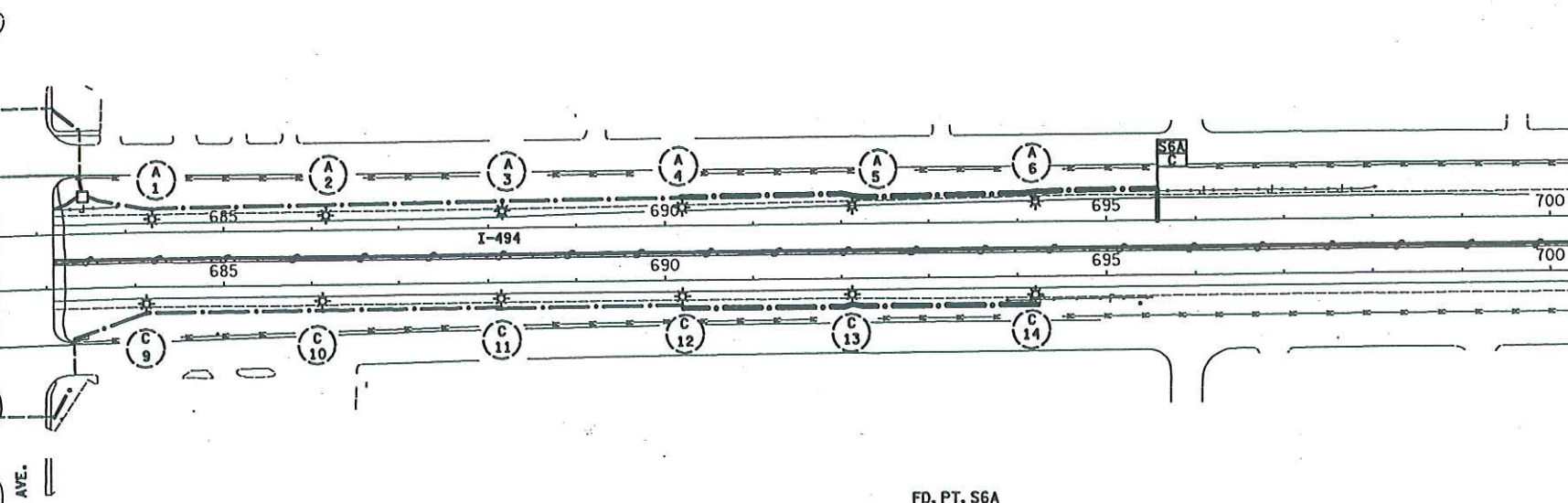




FD. PT. S6A, 240/480 V.
F. & I. SERVICE PANEL
SECONDARY TYPE T1 WITH
METER SOCKET ON
INPLACE EQUIPMENT PAD

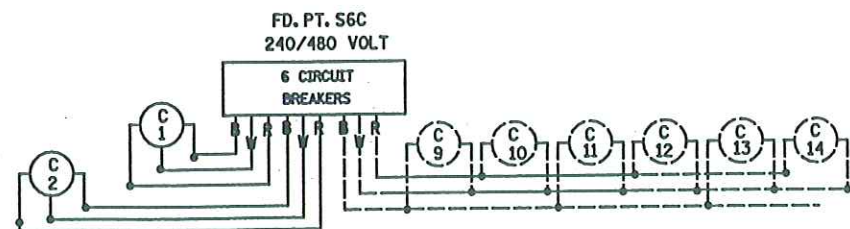
FD. PT. S6C, 240/480 V.
F. & I. SERVICE PANEL
SECONDARY TYPE T1 WITH
METER SOCKET ON
INPLACE EQUIPMENT PAD



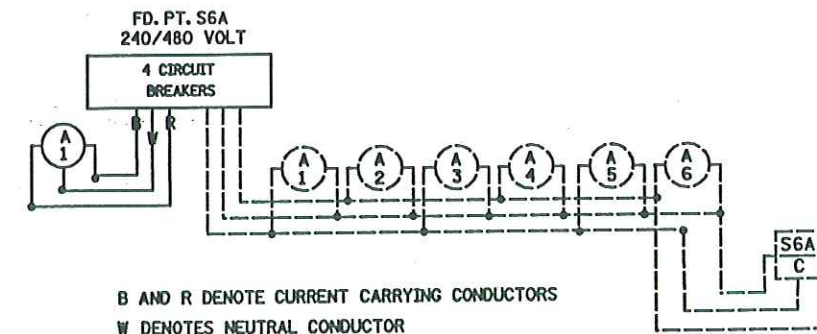
FD. PT. S6C

LIGHTING STANDARDS AND BASES					
NO.	STATION	LT.	RT.	LOCATION	TYPE
(2)	S6C/1	670+25	36	T.H. 494 E.B.	3-100
(2)	S6C/2	676+31	40	T.H. 494 E.B.	3-100
	S6C/9	INPLACE		T.H. 494	
	S6C/10	INPLACE		T.H. 494	
	S6C/11	INPLACE		T.H. 494	
	S6C/12	INPLACE		T.H. 494	

- (1) SYMMETRICAL LUMINAIRES
- (2) ASYMMETRICAL LUMINAIRES



B AND R DENOTE CURRENT CARRYING CONDUCTORS
W DENOTES NEUTRAL CONDUCTOR



B AND R DENOTE CURRENT CARRYING CONDUCTORS
W DENOTES NEUTRAL CONDUCTOR

FD. PT. S6A

LIGHTING STANDARDS AND BASES					
NO.	STATION	LT.	RT.	LOCATION	TYPE
	S6A/1	INPLACE		T.H. 494	
	S6A/2	INPLACE		T.H. 494	
	S6A/3	INPLACE		T.H. 494	
	S6A/4	INPLACE		T.H. 494	
(2)	S6A/7	681+52	47	T.H. 494 W.B.	4-120

- (1) SYMMETRICAL LUMINAIRES
- (2) ASYMMETRICAL LUMINAIRES

LIGHTING PLAN