

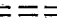
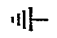

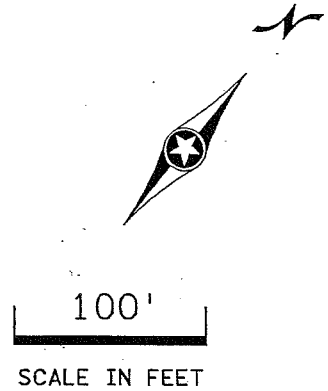


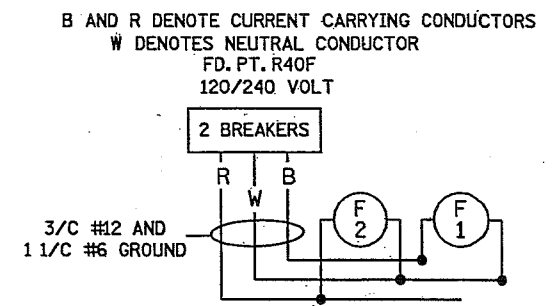
**LEGEND**

-  INSTALL LIGHTING UNIT & LIGHT BASE DESIGN E
-  UNDERGROUND WIRE NO. 6
-  3" NON-METALLIC CONDUIT  
DIRECTIONAL BORE UNLESS OTHERWISE NOTED
-  PERMANENT GROUND ROD (25 OHMS OR LESS)
-  POLE MOUNTED FEEDPOINT

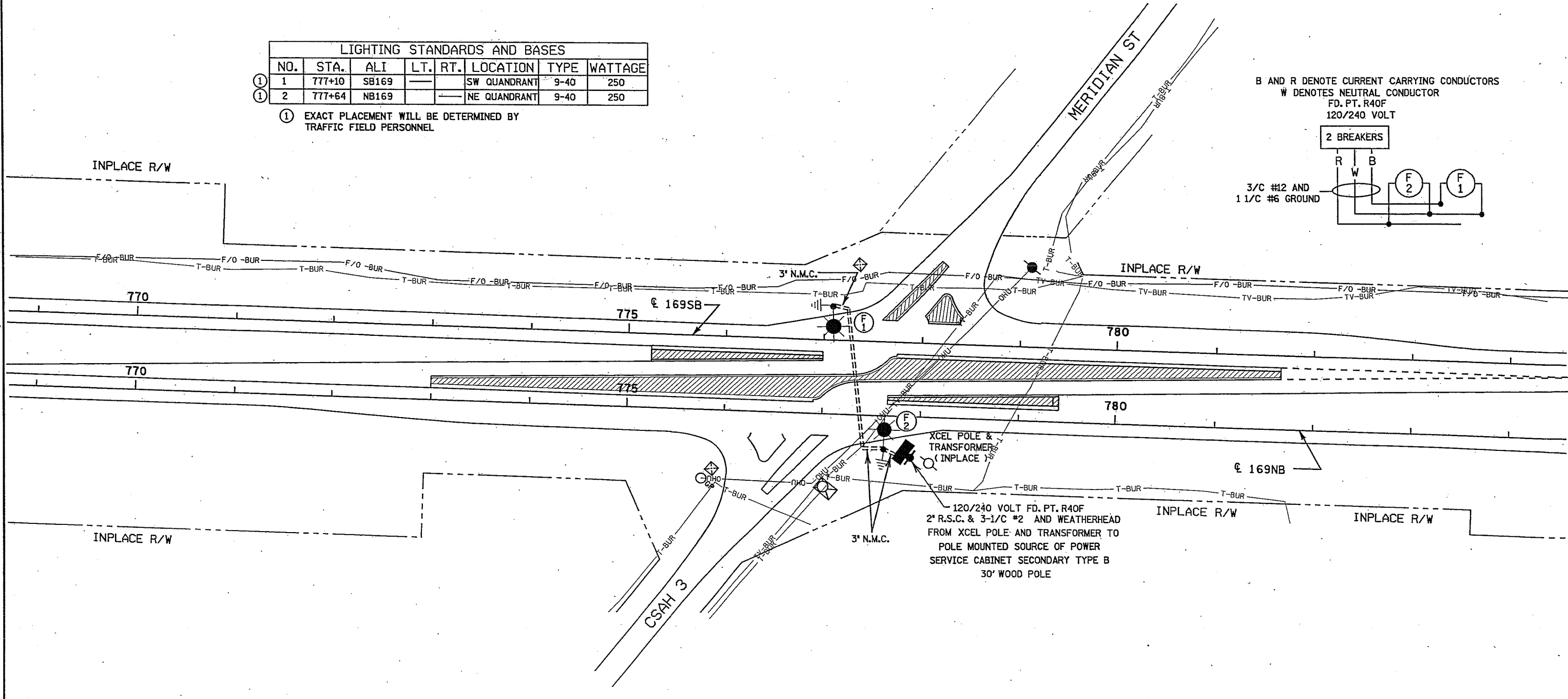


LIGHTING STANDARDS AND BASES						
NO.	STA.	ALI	LT.	RT.	LOCATION	WATTAGE
① 1	777+10	SB169	—	—	SW QUADRANT	9-40 250
① 2	777+64	NB169	—	—	NE QUADRANT	9-40 250

① EXACT PLACEMENT WILL BE DETERMINED BY TRAFFIC FIELD PERSONNEL



DISTRICT #: METRO  
 PLOT NAME: 7008-51.jb  
 PATH & FILENAME: S:\TRAFFIC\LIGHTING\Plans\69\7008-51\_11.dgn\7008-51\_11.dgn



BY	DATE	REVISIONS	SYSTEM ID: 38792	FEEDPOINT: R40F	T.E.: 4669	<b>LIGHTING PLAN</b>
			METER ADDRESS:		LOCATION: TH 169/ C.S.A.H. 3/ MERIDIAN ST.	
DRAWN BY: NS			CERTIFIED BY: <i>Michael P. Galsbury</i>		DATE: 06/26/08	STATE PROJ. NO. 7008-51 (T.H.169) SHEET NO. 70 OF 84 SHEETS
CKD BY: GB			DATE: 06/25/08		LIC. NO. 19863	