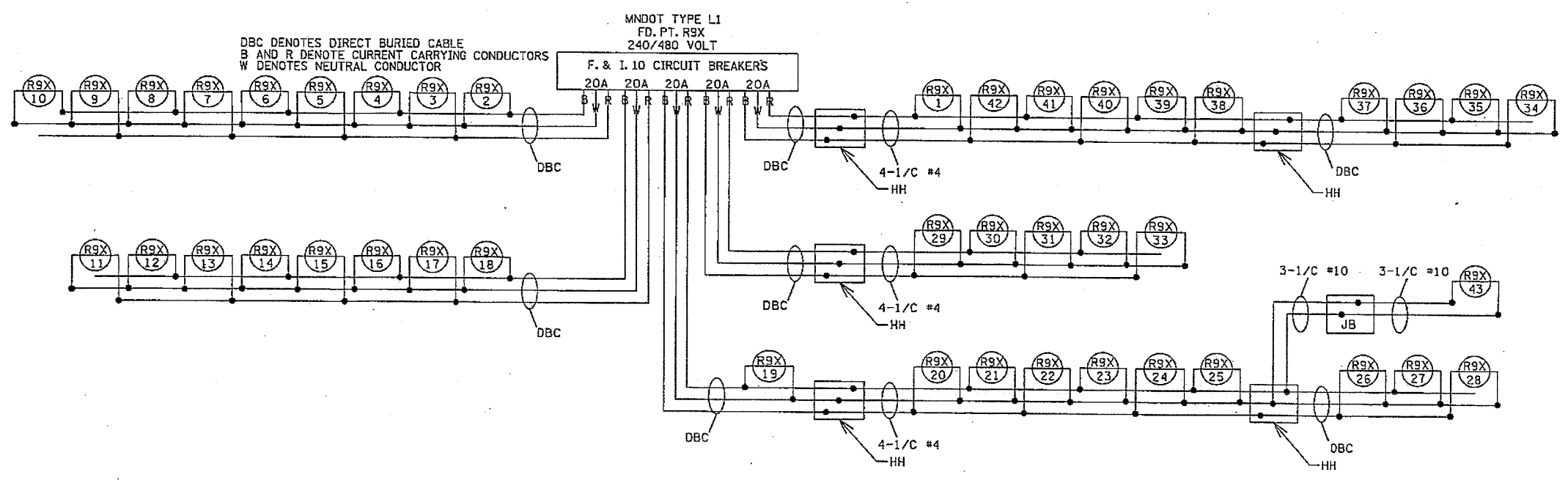


- NOTES:
1. DIRECT BURIED CABLE SHALL BE ARMORED CABLE WITH 4-1/2 #4 CONDUCTORS.
 2. ALL DISTRIBUTION CABLE IN CONDUIT SHALL BE 3-1/2 #4 WITH 1-1/2 #4 GND (UNLESS OTHERWISE NOTED)
 3. ABANDON ASSOCIATED EXISTING CONDUIT IN PLACE.
 4. ALL DIRECT BURIED CABLE PASSING UNDER A ROADWAY SHALL UTILIZE A 3" NMC SLEEVE THAT SHALL BE PLACED PERPENDICULAR TO THE ROADWAY.
 5. SEE LEGEND ON SHEET NO. 624

FEED POINT 'X'					
NO.	STATION	L	R	LOCATION	LIGHT TYPE
1	868+45	X		SB169	9B-49
2	865+63	X		SB169	9-49
3	862+84	X		SB169	9-49
4	860+08	X		SB169	9-49
5	857+33	X		SB169	9-49
6	854+55	X		SB169	9-49
7	851+73	X		SB169	9-49
8	849+04	X		SB169	9-49
9	846+22	X		SB169	9-49
10	843+42	X		SB169	9-49
11	845+17		X	NB169	9-49
12	847+98		X	NB169	9-49
13	850+86		X	NB169	9-49
14	853+73		X	NB169	9-49
15	856+62		X	NB169	9-49
16	859+40		X	NB169	9-49
17	862+30		X	NB169	9-49
18	865+10		X	NB169	9-49
19	867+88		X	NB169	9-49

PAD MOUNTED SOURCE OF POWER
 SERVICE CABINET SECONDARY TYPE L1
 FEEDPOINT R9X, (METERED) 240/480 VOLT
 EQUIPMENT PAD B
 2" RSC AND 3-1/2 #2 TO XCEL ENERGY TRANSFORMER
 XCEL CONTACT GREG PLUMEDAHL #612-723-5815



DBC DENOTES DIRECT BURIED CABLE
 B AND R DENOTE CURRENT CARRYING CONDUCTORS
 W DENOTES NEUTRAL CONDUCTOR

MNDOT TYPE L1
 FD. PT. R9X
 240/480 VOLT

F. & I. IO CIRCUIT BREAKERS
 20A 20A 20A 20A 20A

10:24:48 AM
 3/7/06
 ... \5837r\ee\p1an\5837R.LT1.dgn

NO	DATE	BY	CHKD	APPR	REVISION

I hereby certify that this plan, specification, or report was prepared by me or under my direct supervision and that I am a duly Licensed Professional Engineer under the laws of the State of Minnesota.
 Print Name: **BRIAN D. HOLT**
Brian D Holt
 Date: **3/7/06** License #: **21428**

STATE AID PROJECT NO. X
 STATE PROJECT NO. 2750-57
 COUNTY PROJECT NO. X
 CITY PROJECT NO. X
 DRAWN BY J KRUSE
 DESIGNED BY B HOLT
 CHECKED BY B HOLT
 COMM. NO. 0065837

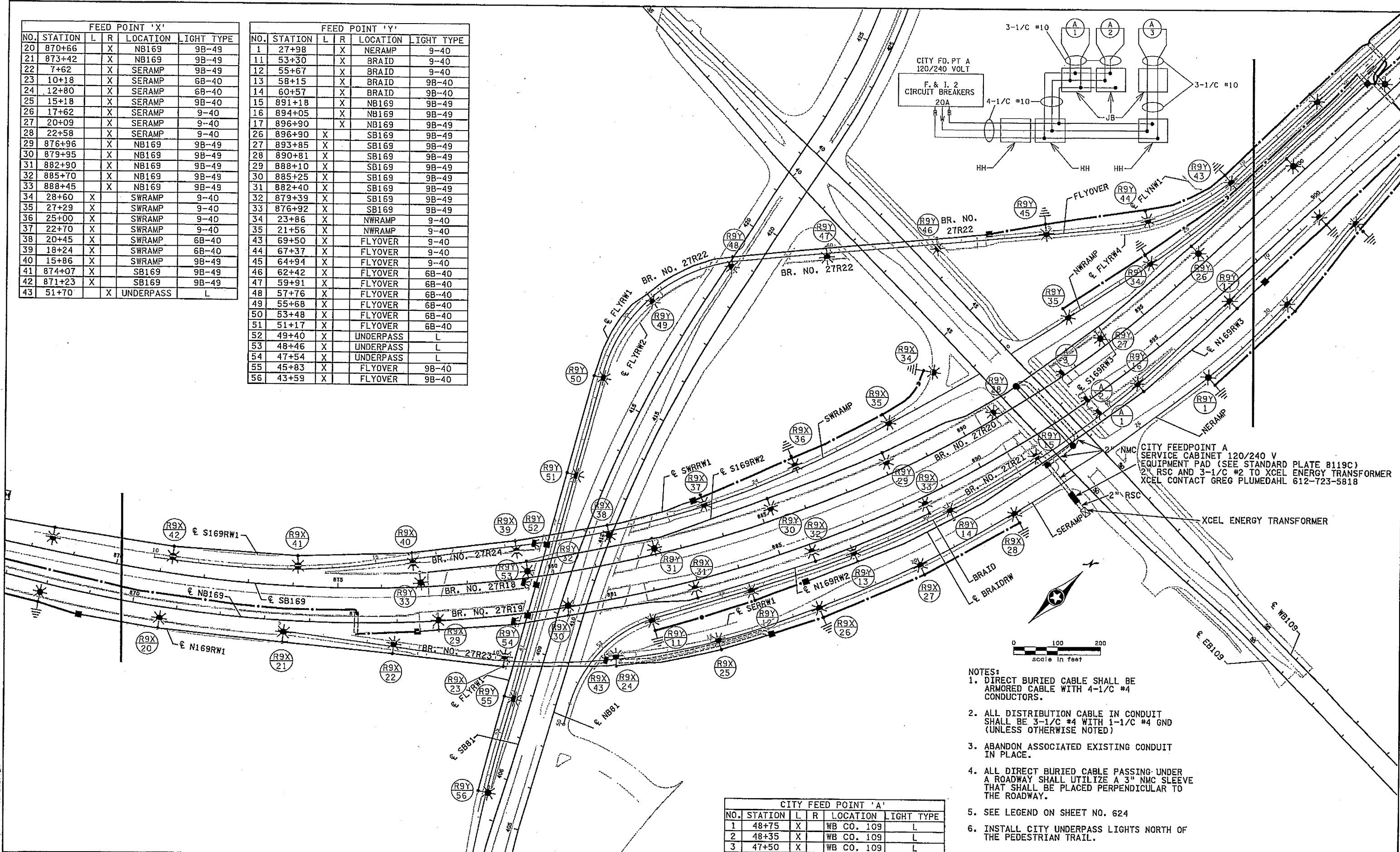


CLIENT NAME
 LIGHTING PLAN
 TH 169

SHEET
 633
 OF
 837

FEED POINT 'X'					
NO.	STATION	L	R	LOCATION	LIGHT TYPE
20	870+66	X		NB169	9B-49
21	873+42	X		NB169	9B-49
22	7+62	X		SERAMP	9B-49
23	10+18	X		SERAMP	6B-40
24	12+80	X		SERAMP	6B-40
25	15+18	X		SERAMP	9B-40
26	17+62	X		SERAMP	9-40
27	20+09	X		SERAMP	9-40
28	22+58	X		SERAMP	9-40
29	876+96	X		NB169	9B-49
30	879+95	X		NB169	9B-49
31	882+90	X		NB169	9B-49
32	885+70	X		NB169	9B-49
33	888+45	X		NB169	9B-49
34	28+60	X		SWRAMP	9-40
35	27+29	X		SWRAMP	9-40
36	25+00	X		SWRAMP	9-40
37	22+70	X		SWRAMP	9-40
38	20+45	X		SWRAMP	6B-40
39	18+24	X		SWRAMP	6B-40
40	15+86	X		SWRAMP	9B-49
41	874+07	X		SB169	9B-49
42	871+23	X		SB169	9B-49
43	51+70	X		UNDERPASS	L

FEED POINT 'Y'					
NO.	STATION	L	R	LOCATION	LIGHT TYPE
1	27+98		X	NERAMP	9-40
11	53+30		X	BRAID	9-40
12	55+67		X	BRAID	9-40
13	58+15		X	BRAID	9B-40
14	60+57		X	BRAID	9B-40
15	891+18		X	NB169	9B-49
16	894+05		X	NB169	9B-49
17	896+90		X	NB169	9B-49
26	896+90	X		SB169	9B-49
27	893+85	X		SB169	9B-49
28	890+81	X		SB169	9B-49
29	888+10	X		SB169	9B-49
30	885+25	X		SB169	9B-49
31	882+40	X		SB169	9B-49
32	879+39	X		SB169	9B-49
33	876+92	X		SB169	9B-49
34	23+86	X		NWRAMP	9-40
35	21+56	X		NWRAMP	9-40
43	69+50	X		FLYOVER	9-40
44	67+37	X		FLYOVER	9-40
45	64+94	X		FLYOVER	9-40
46	62+42	X		FLYOVER	6B-40
47	59+91	X		FLYOVER	6B-40
48	57+76	X		FLYOVER	6B-40
49	55+68	X		FLYOVER	6B-40
50	53+48	X		FLYOVER	6B-40
51	51+17	X		FLYOVER	6B-40
52	49+40	X		UNDERPASS	L
53	48+46	X		UNDERPASS	L
54	47+54	X		UNDERPASS	L
55	45+83	X		FLYOVER	9B-40
56	43+59	X		FLYOVER	9B-40



CITY FEEDPOINT A SERVICE CABINET 120/240 V EQUIPMENT PAD (SEE STANDARD PLATE 8119C) 2" RSC AND 3-1/C #2 TO XCEL ENERGY TRANSFORMER XCEL CONTACT GREG PLUMEDAHL 612-723-5818

- NOTES:
1. DIRECT BURIED CABLE SHALL BE ARMORED CABLE WITH 4-1/C #4 CONDUCTORS.
 2. ALL DISTRIBUTION CABLE IN CONDUIT SHALL BE 3-1/C #4 WITH 1-1/C #4 GND (UNLESS OTHERWISE NOTED)
 3. ABANDON ASSOCIATED EXISTING CONDUIT IN PLACE.
 4. ALL DIRECT BURIED CABLE PASSING UNDER A ROADWAY SHALL UTILIZE A 3" NMC SLEEVE THAT SHALL BE PLACED PERPENDICULAR TO THE ROADWAY.
 5. SEE LEGEND ON SHEET NO. 624
 6. INSTALL CITY UNDERPASS LIGHTS NORTH OF THE PEDESTRIAN TRAIL.

CITY FEED POINT 'A'					
NO.	STATION	L	R	LOCATION	LIGHT TYPE
1	48+75	X		WB CO. 109	L
2	48+35	X		WB CO. 109	L
3	47+50	X		WB CO. 109	L

I hereby certify that this plan, specification, or report was prepared by me or under my direct supervision and that I am a duly Licensed Professional Engineer under the laws of the State of Minnesota.
 Print Name: BRIAN D. HOLT
Brian D. Holt
 Date: 3/7/08 License: 21428

STATE AID PROJECT NO. X
 DRAWN BY J. KRUSE
 STATE PROJECT NO. 2750-57
 DESIGNED BY B. HOLT
 COUNTY PROJECT NO. X
 CHECKED BY B. HOLT
 CITY PROJECT NO. X
 COMM. NO. 0065837



CLIENT NAME
 LIGHTING PLAN
 TH 169
 SHEET
 634
 OF
 837

10:24:50 AM
 3/7/2008
 ...\\s837r\ee\p\cm\5837R.LT2.dgn

NO.	DATE	BY	CHKD	APPR	REVISION