

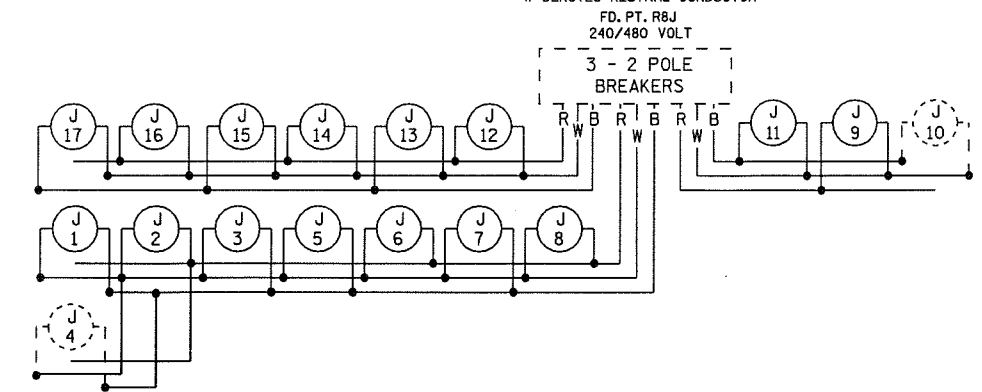
PLOTTED/REVISED: 2/2/2010

DISTRICT #: METRO
 IPLOT NAME: Ins 12772-88_10
 PATH & FILENAME: c:\Project\Wise\PW_Working\Kluf\Er\1\DOT29680\Ins 12772-88_10\lab.dgn

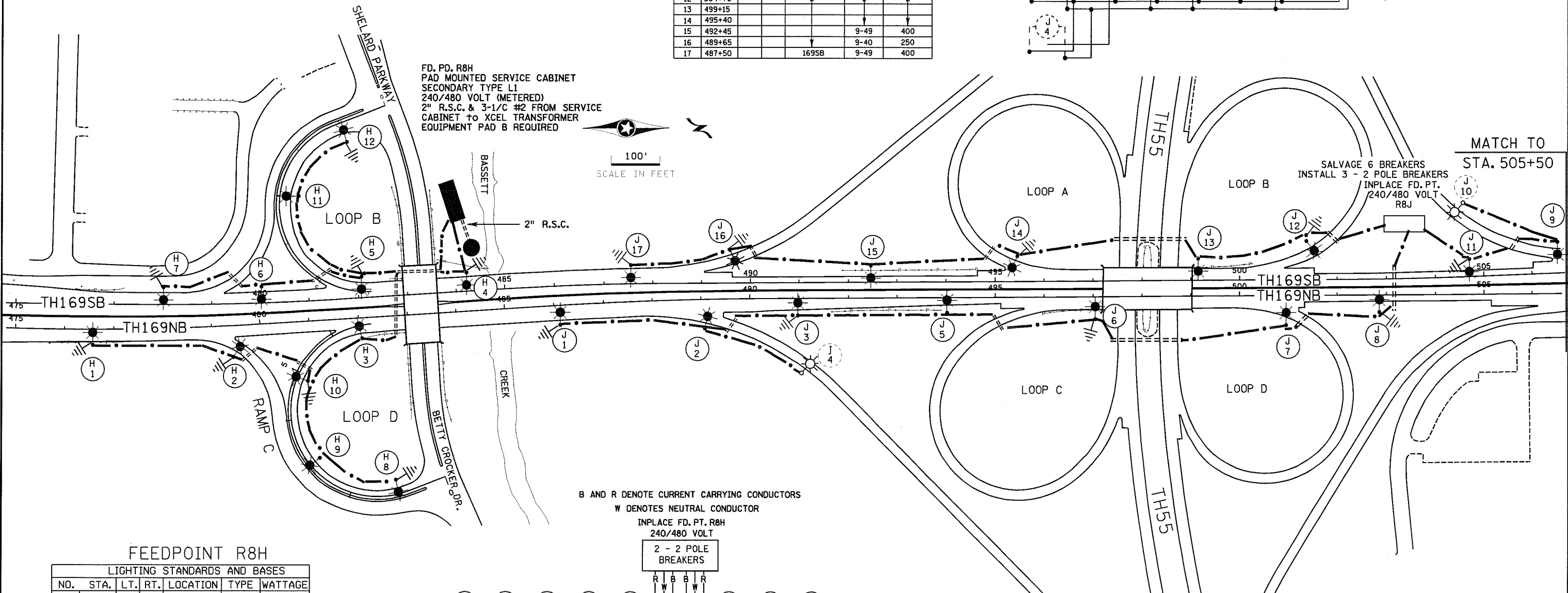
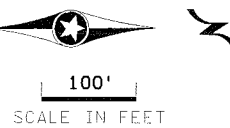
FEEDPOINT R8J

LIGHTING STANDARDS AND BASES					
NO.	STA.	LT.	RT.	LOCATION	TYPE WATTAGE
1	486+05			169NB	9-49 400
2	489+10			169NB	↑
3	490+95			169NB	↑
4				INPLACE	
5	494+00				↓
6	497+00				↓
7	500+95			169NB	↑
8	502+85			169NB	↑
9	506+55			169SB	↓
10				INPLACE	
11	501+40			169SB	9-49 400
12	504+70				↑
13	499+15				↑
14	495+40				↑
15	492+45				9-49 400
16	489+65				9-40 250
17	487+50			169SB	9-49 400

DASHED LINES DENOTE INPLACE ITEMS
 B AND R DENOTE CURRENT CARRYING CONDUCTORS
 W DENOTES NEUTRAL CONDUCTOR



FD. PD. R8H
 PAD MOUNTED SERVICE CABINET
 SECONDARY TYPE L1
 240/480 VOLT (METERED)
 2" R.S.C. & 3-1/C #2 FROM SERVICE
 CABINET TO XCEL TRANSFORMER
 EQUIPMENT PAD B REQUIRED



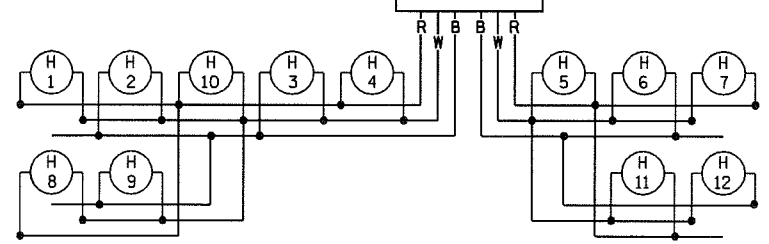
MATCH TO
 STA. 505+50

SALVAGE 6 BREAKERS
 INSTALL 3 - 2 POLE BREAKERS
 INPLACE FD. PT.
 240/480 VOLT
 R8J

B AND R DENOTE CURRENT CARRYING CONDUCTORS
 W DENOTES NEUTRAL CONDUCTOR

INPLACE FD. PT. R8H
 240/480 VOLT

2 - 2 POLE
 BREAKERS



FEEDPOINT R8H

LIGHTING STANDARDS AND BASES					
NO.	STA.	LT.	RT.	LOCATION	TYPE WATTAGE
1	476+55			169NB	9-49 400
2	479+50			169NB	↑
3	482+00			169NB	↑
4	484+25			169SB	↓
5	482+10				↓
6	480+00				↓
7	478+00			169SB	9-49 400
8	1+00			LOOP D	9-40 250
9	3+00			LOOP D	↓
10	4+90			LOOP D	↓
11	3+00			LOOP B	↓
12	1+00			LOOP B	9-40 250

**AS-BUILT
 FEEDPOINTS R8H, R8J**

LIGHTING PLANS

BY	DATE	REVISIONS	FEEDPOINT: R8H - R8J	LOCATION: BETTY CROCKER DR., TH55	STATE PROJ. NO. 2772-88 (T.H.169) SHEET NO. 61 OF 74 SHEETS
EK	2/2/10	MOVE R8H FEEDPOINT & CONDUITS	METER ADDRESS:		
DRAWN BY: NS		CKD BY: GB	DATE:		

CERTIFIED BY *Michael P. Labusky* LIC. NO. 19863 DATE: 4/21/2009
 LICENSED PROFESSIONAL ENGINEER