

FEEDPOINT R7T
LIGHTING STANDARDS AND BASES

NO.	STATION	LT.	RT.	LOCATION	TYPE
1	202 + 60		X	N.B. 169	9-49
2	199 + 36		X	N.B. 169	9-49
3	196 + 00		X	N.B. 169	9-49
4	1 + 10	X		S.W. RAMP	9-49
10	9 + 22		X	S.E. RAMP	9-40
11	6 + 87		X	S.E. RAMP	9-40
12	4 + 52		X	S.E. RAMP	9-40
(1) 13	INPLACE		X	S.E. RAMP	9B-40
(1) 14	INPLACE		X	N.B. 169	9B-40
19	202 + 82	X		S.B. 169	9-49
20	200 + 97	X		S.B. 169	9-49
21	197 + 60	X		S.B. 169	9-49
22	3 + 30	X		S.W. RAMP	9-40
23	5 + 40	X		S.W. RAMP	9-40
24	7 + 50	X		S.W. RAMP	9-40
25	9 + 60	X		S.W. RAMP	9-40
26	604 + 60		X	E.B. T.H. 7	9-40
27	205 + 28		X	N.B. 169	9-49
28	207 + 09		X	N.B. 169	9-49
31	205 + 50	X		S.B. 169	9-49
35	9 + 23		X	N.W. LOOP	9-40
36	6 + 08		X	N.W. LOOP	9-40
37	3 + 93		X	N.W. LOOP	9-40
38	1 + 78		X	N.W. LOOP	9-40
39	610 + 98	X		W.B. T.H. 7	9-49

SEE SHEET 45 FOR LEGEND

MATCHLINE H

(1) (1)

(1) USE INPLACE POLES - REPLACE LUMINAIRE

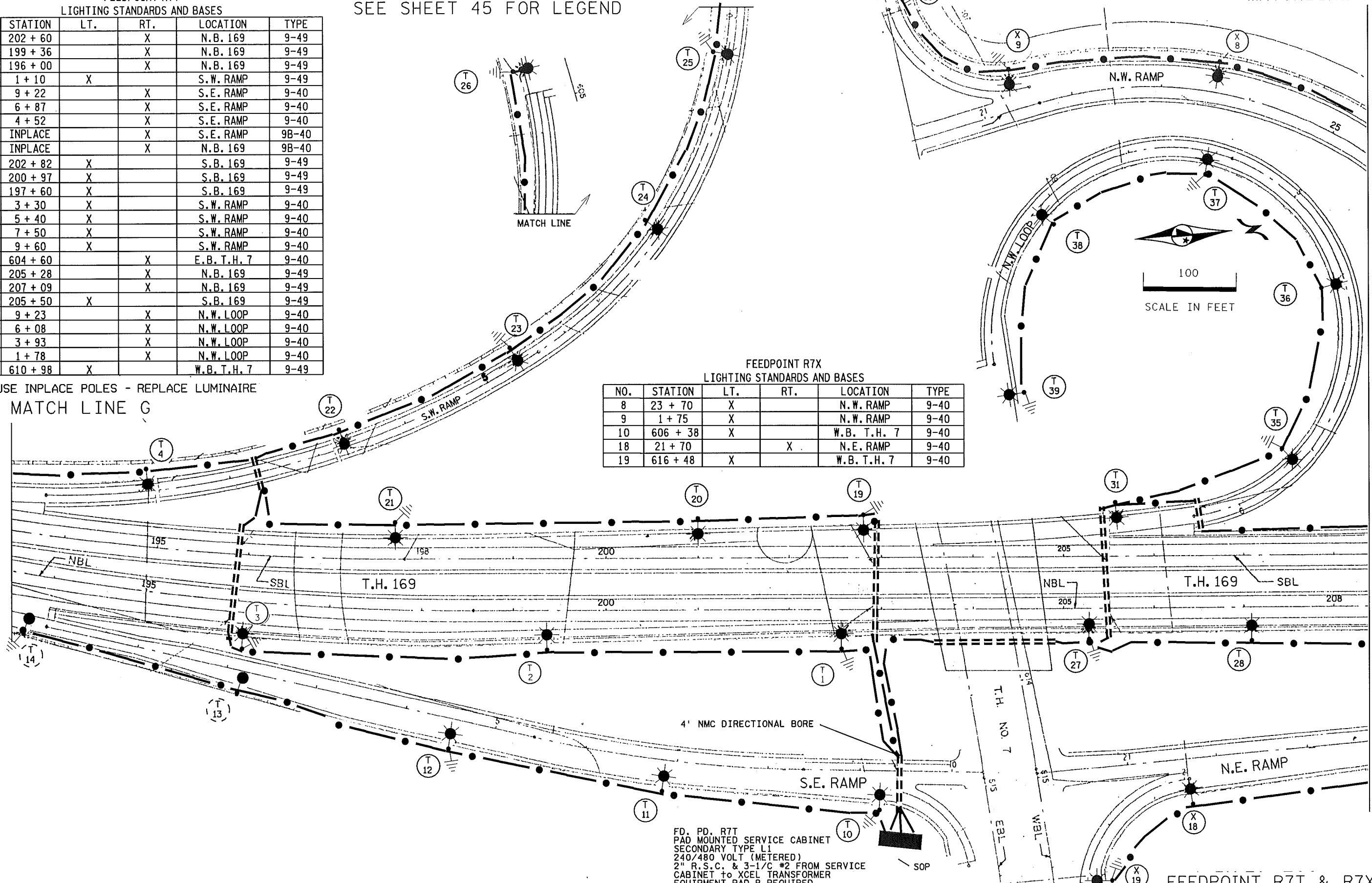
MATCH LINE G

FEEDPOINT R7X
LIGHTING STANDARDS AND BASES

NO.	STATION	LT.	RT.	LOCATION	TYPE
8	23 + 70	X		N.W. RAMP	9-40
9	1 + 75	X		N.W. RAMP	9-40
10	606 + 38	X		W.B. T.H. 7	9-40
18	21 + 70		X	N.E. RAMP	9-40
19	616 + 48	X		W.B. T.H. 7	9-40

PLOTTED/REVISED: 4/21/2009

DISTRICT #: METRO
PLOT NAME: 12772-88PG54
PATH & FILENAME: S:\TRAFFIC\LIGHTING\Plans\69\2772-88\2772-88b.dgn



FD. PD. R7T
PAD MOUNTED SERVICE CABINET
SECONDARY TYPE L1
240/480 VOLT (METERED)
2" R.S.C. & 3-1/2" #2 FROM SERVICE
CABINET to XCEL TRANSFORMER
EQUIPMENT PAD B REQUIRED

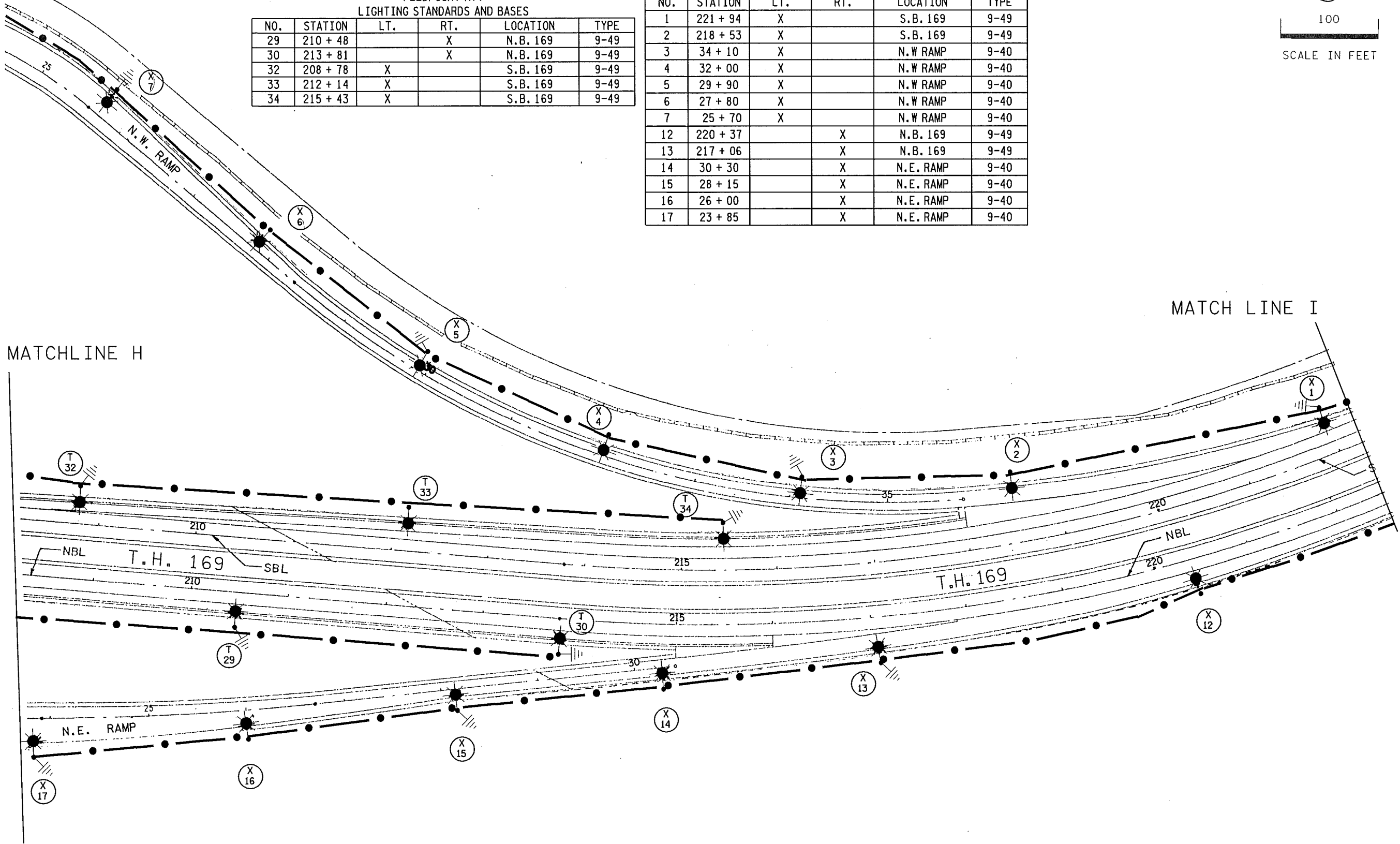
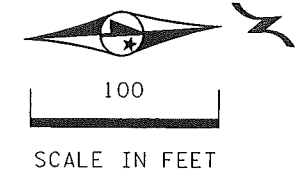
FEEDPOINT R7T & R7X

BY	DATE	REVISIONS	FEEDPOINT: R7T,R7X	LOCATION: TH 169 AT TH 7	LIGHTING PLAN
			METER ADDRESS:		
DRAWN BY: PB	CKD BY: GB	DATE:	CERTIFIED BY: <i>Michael P. Gulbinsky</i>	LIC. NO. 19863	DATE: 4/21/2009
			STATE PROJ. NO. 2772-88 (T.H. 169)		SHEET NO. 54 OF 74 SHEETS

SEE SHEET 45 FOR LEGEND

FEEDPOINT R7T LIGHTING STANDARDS AND BASES					
NO.	STATION	LT.	RT.	LOCATION	TYPE
29	210 + 48		X	N.B. 169	9-49
30	213 + 81		X	N.B. 169	9-49
32	208 + 78	X		S.B. 169	9-49
33	212 + 14	X		S.B. 169	9-49
34	215 + 43	X		S.B. 169	9-49

FEEDPOINT R7X LIGHTING STANDARDS AND BASES					
NO.	STATION	LT.	RT.	LOCATION	TYPE
1	221 + 94	X		S.B. 169	9-49
2	218 + 53	X		S.B. 169	9-49
3	34 + 10	X		N.W RAMP	9-40
4	32 + 00	X		N.W RAMP	9-40
5	29 + 90	X		N.W RAMP	9-40
6	27 + 80	X		N.W RAMP	9-40
7	25 + 70	X		N.W RAMP	9-40
12	220 + 37		X	N.B. 169	9-49
13	217 + 06		X	N.B. 169	9-49
14	30 + 30		X	N.E. RAMP	9-40
15	28 + 15		X	N.E. RAMP	9-40
16	26 + 00		X	N.E. RAMP	9-40
17	23 + 85		X	N.E. RAMP	9-40



DISTRICT #: METRO
 PLOT NAME: 12772-88PG55
 PATH & FILENAME: S:\TRAFFIC\LIGHTING\Plans\169\2772-2772-88\12772-88b.dgn
 PLOTTED/REVISED: 4/21/2009

FEEDPOINTS R7T & R7X

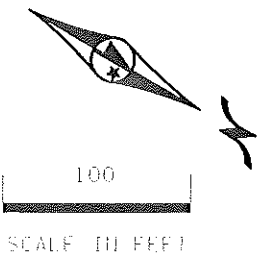
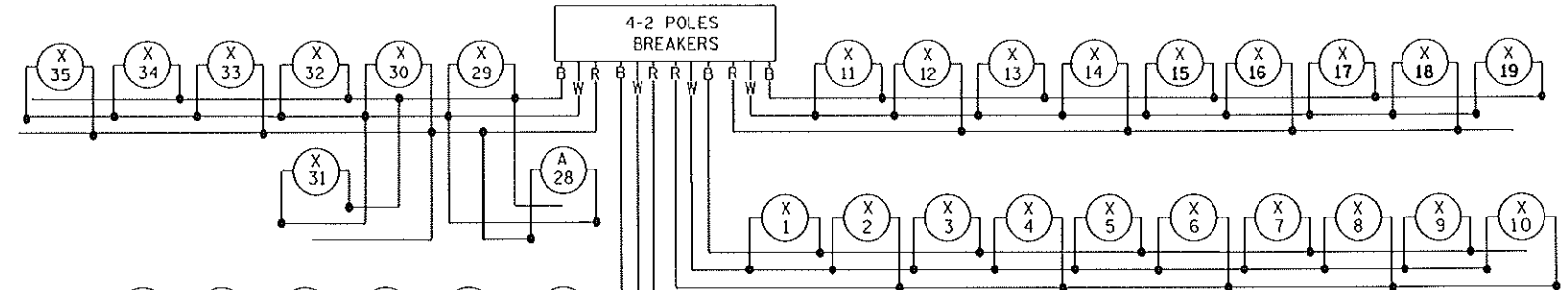
BY	DATE	REVISIONS	FEEDPOINT: R7T,R7X	LOCATION: TH 169 AT TH 7/36TH ST.	LIGHTING PLAN
			METER ADDRESS:		
DRAWN BY: PB	CKD BY: GB	DATE:	CERTIFIED BY: <i>Michael P. Gelensky</i> LICENSED PROFESSIONAL ENGINEER	LIC. NO. 19863	DATE: 4/21/2009
			STATE PROJ.NO.2772-88 (T.H.169)		SHEET NO. 55 OF 74 SHEETS

FEEDPOINT R7X
LIGHTING STANDARDS AND BASES

NO.	STATION	LT.	RT.	LOCATION	TYPE
11	224 + 62		X	N.B. 169	9-49
20	226 + 25	X		S.B. 169	9-49
21	230 + 23	X		S.B. 169	9-49
22	56 + 12	X		N.W. RAMP	9-40
23	232 + 92	X		S.B. 169	9-49
24	235 + 82	X		S.B. 169	9-49
25	148 + 53	X		S.B. 169	9-49
26	54 + 00	X		N.W. RAMP	9-40
27	51 + 91	X		N.W. RAMP	9-40
28	42 + 38		X	N.E. RAMP	9-40
29	44 + 14		X	N.E. RAMP	9-40
30	46 + 34		X	N.E. RAMP	9-40
31	228 + 24		X	N.B. 169	9-49
32	48 + 54		X	N.E. RAMP	9-40
33	231 + 70		X	N.B. 169	9-49
34	234 + 29			N.B. 169	9-49
35	237 + 53		X	N.B. 169	9-49

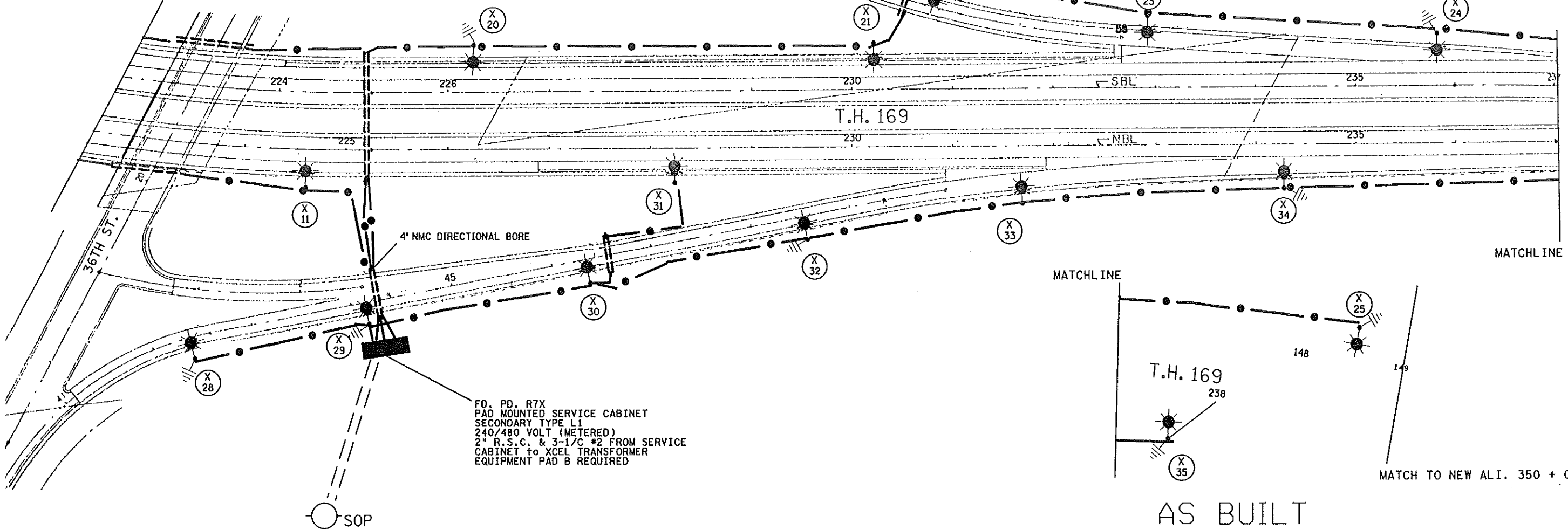
SEE SHEET 45 FOR LEGEND

FD. PT. R7X
240/480 VOLT



PLOTTED/REVISED: 3/21/2014

MATCH LINE I



FD. PD. R7X
PAD MOUNTED SERVICE CABINET
SECONDARY TYPE L1
240/480 VOLT (METERED)
2" R.S.C. & 3-1/2" #2 FROM SERVICE
CABINET TO XCEL TRANSFORMER
EQUIPMENT PAD B REQUIRED

AS BUILT

FEEDPOINT R7X

DISTRICT #: METRO
PLOT NAME: 12772-88b
PATH & FILENAME: IP_PWP-0801872V2772-88b.dgn

BY	DATE	REVISIONS	FEEDPOINT: R7X	LOCATION: TH 169 AT 36TH ST.	LIGHTING PLAN
BC	03/2014	SOP LOCATION 170' EAST OF FEED POINT	METER ADDRESS:		
DRAWN BY:	PB	CKD BY: GB	DATE:	CERTIFIED BY: <i>Michael P. Gubinsky</i>	STATE PROJ. NO. 2772-88 (T.H. 169)
				LIC. NO. 19863 DATE: 3/21/2014	SHEET NO. 56 OF 74 SHEETS