

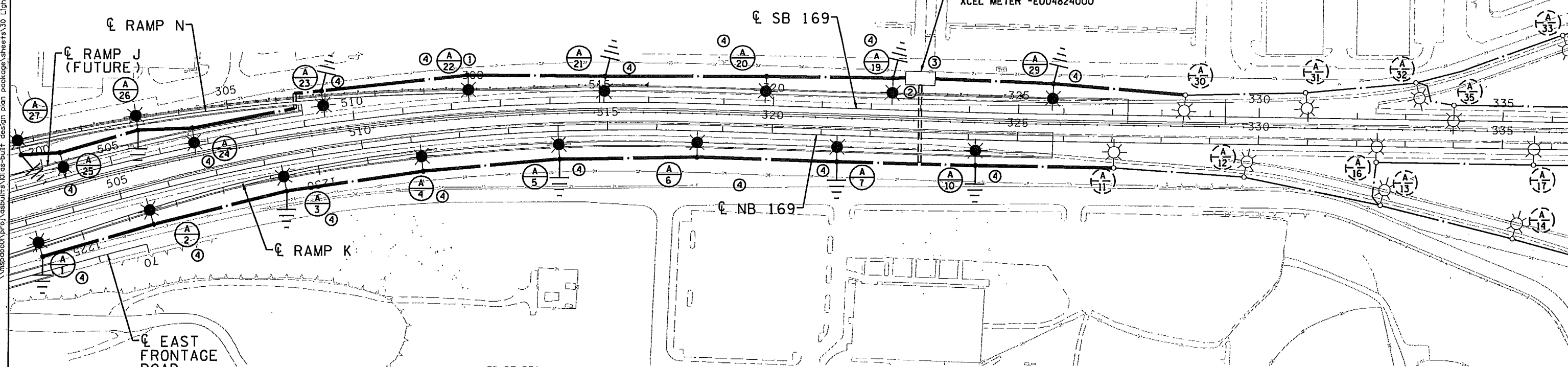
FD. PT. R7A

LIGHTING STANDARDS AND BASES					
NO.	STATION	LT.	RT.	LOCATION	TYPE
1	503+14		70	TH 169 NB	9-49
2	505+50		66	TH 169 NB	9-49
3	508+35		60	TH 169 NB	9-49
4	511+18		60	TH 169 NB	9-49
5	514+01		57	TH 169 NB	9-49
6	318+51		54	TH 169 NB	9-49
7	321+35		54	TH 169 NB	9-49
10	324+17		52	TH 169 NB	9-49
11	INPLACE		-	TH 169 NB	9-49
12	INPLACE		-	TH 169 NB	9-40
13	INPLACE		-	TH 169 NB	9-40
14	INPLACE		-	TH 169 NB	9-40
16	INPLACE		-	TH 169 NB	9-49
17	INPLACE		-	TH 169 NB	9-49
19	322+42	65		TH 169 SB	9-49

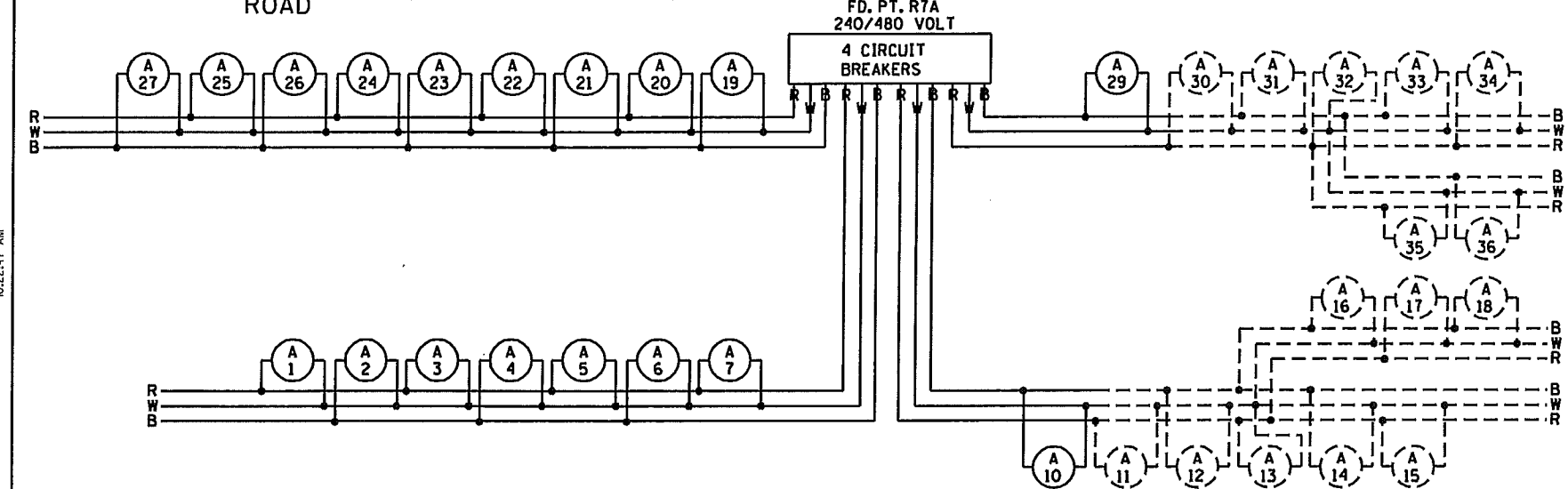
FD. PT. R7A

LIGHTING STANDARDS AND BASES					
NO.	STATION	LT.	RT.	LOCATION	TYPE
20	319+84	60		TH 169 SB	9-49
21	515+12	54		TH 169 SB	9-49
22	512+38	68		TH 169 SB	9-49
23	509+43	68		TH 169 SB	9-49
24	506+74	38		TH 169 SB	9-49
25	504+04	51		TH 169 SB	9-49
26	306+87	18		RAMP N	9-40
27	309+31	22		RAMP N	9-40
29	325+70	62		TH 169 SB	9-49
30	INPLACE		-	TH 169 SB	9-49
31	INPLACE		-	TH 169 SB	9-49
32	INPLACE		-	TH 169 SB	9-40
33	INPLACE		-	TH 169 SB	9-40
35	INPLACE		-	TH 169 SB	9-49

I:\speed\proj\asbuilt\10\as-built\design\plan\_packages\sheet\30\_Lighting\_Plan\CD277603\_T24.LL04.dgn



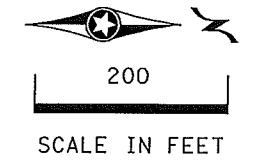
INPLACE FD. PT. R7A  
PAD MOUNTED SERVICE CABINET  
SECONDARY TYPE L1  
240/480V  
XCEL METER #E004824000



B AND R DENOTE CURRENT CARRYING CONDUCTORS  
W DENOTES NEUTRAL CONDUCTOR

**SPECIFIC NOTES**

- ① PROVIDE 2" NMC IN SIGN FOUNDATION AT TH 169 SB STA. 512+42, 46.5LT. STUB 12" BEYOND FOUNDATION AND CAP 24" BELOW GRADE.
- ② PROVIDE 2" NMC IN SIGN FOUNDATION AT TH 169 SB STA. 323+00, 41.5LT. STUB 12" BEYOND FOUNDATION AND CAP 24" BELOW GRADE. COORDINATE WITH FD.PT.R7A 3" NMC SLEEVE.
- ③ REPLACE SINGLE POLE BREAKERS WITH NEW TWO POLE BREAKERS.
- ④ EXISTING 9-49 POLES ALONG TH 169 NORTH OF I-494 SHALL BE RELOCATED TO NEW LOCATIONS SHOWN ON PLAN.



SHEET 4 OF 14

MNDOT			
SIGNATURE	DATE	CHECKED: TKF	MAH
REV	DATE	BY	DESCRIPTION OF REVISION
01	01-14-13		AS-BUILT

**JACOBS** *MP Consultants*

DESIGNED: MAH  
CHECKED: BML

**C.S. McCrossan**

KRAEMER

I HEREBY CERTIFY THAT THIS PLAN WAS PREPARED BY ME OR UNDER MY DIRECT SUPERVISION AND THAT I AM A DULY LICENSED PROFESSIONAL ENGINEER UNDER THE LAWS OF THE STATE OF MINNESOTA.

NAME BEATRIZ A MENDEZ-LORA LICENSE # 25230 DATE 25230

LIGHTING SHEET  
TH169 STA. 503-336

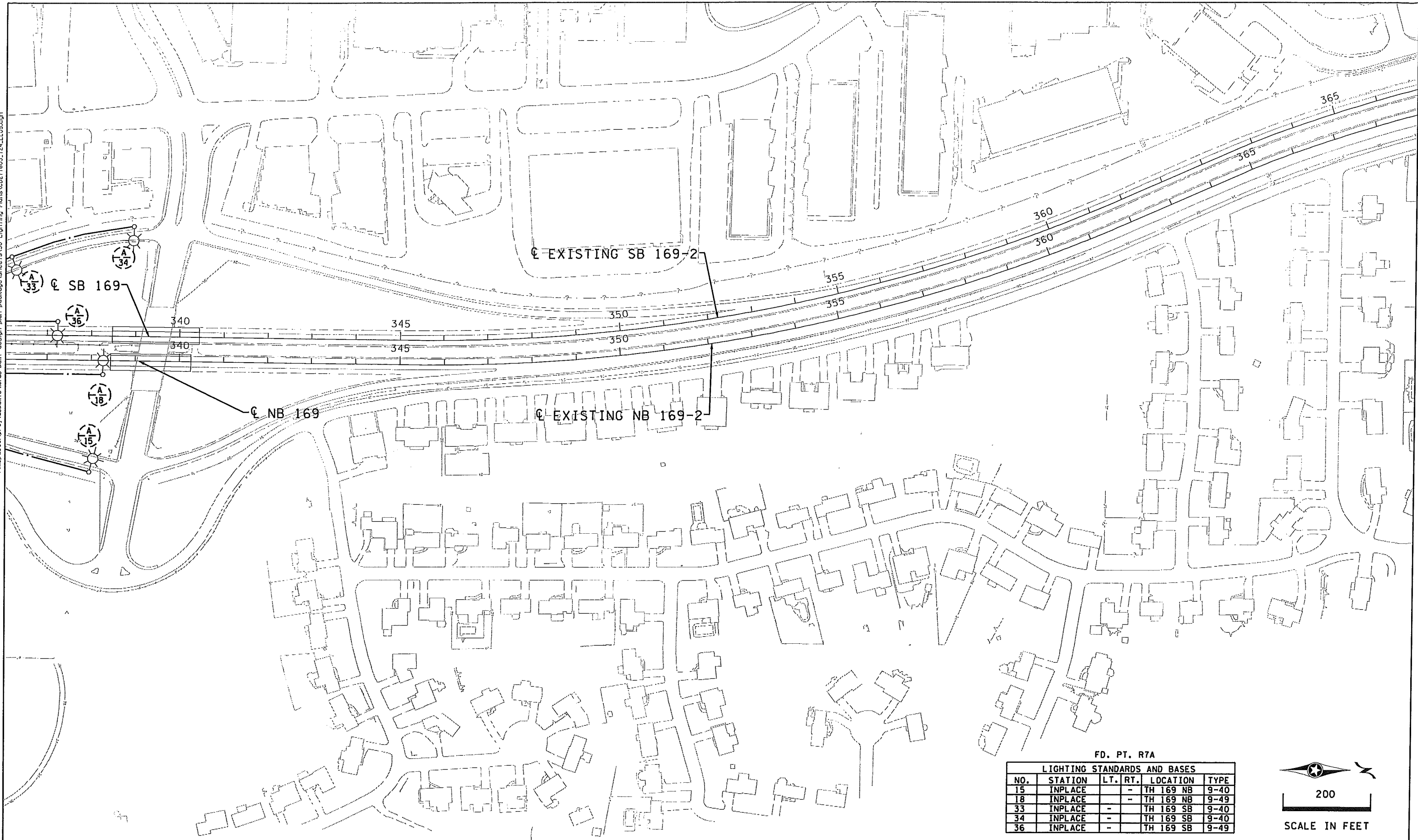
S.P. NO. 2776-03 (T.H. 169)  
SHEET NO. 1296 OF 2032 SHEETS

DESIGN PACKAGE T24  
SHEET LOCATION SL\_D  
DRAWING NAME CD277603\_T24\_LL04

2/7/2013 10:22:47 AM

\\mspac001\proj\as-built\design\plan\_package\sheet\30\_Lighting\_Plans\CD277603\_T24.LL05.dgn

02/22/18 AM



FD. PT. RTA

LIGHTING STANDARDS AND BASES				
NO.	STATION	LT.	RT.	LOCATION TYPE
15	INPLACE	-	-	TH 169 NB 9-40
18	INPLACE	-	-	TH 169 NB 9-49
33	INPLACE	-	-	TH 169 SB 9-40
34	INPLACE	-	-	TH 169 SB 9-40
36	INPLACE	-	-	TH 169 SB 9-49

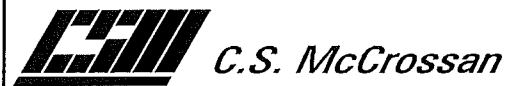


SCALE IN FEET

SHEET 5 OF 14

MNDOT			
SIGNATURE	DATE	BY	DESCRIPTION OF REVISION
	01-14-13		AS-BUILT

DRAWN:	TKF
CHECKED:	MAH
DESIGNED:	MAH
CHECKED:	BML



I HEREBY CERTIFY THAT THIS PLAN WAS PREPARED BY ME OR UNDER MY DIRECT SUPERVISION AND THAT I AM A DULY LICENSED PROFESSIONAL ENGINEER UNDER THE LAWS OF THE STATE OF MINNESOTA.

DATE: \_\_\_\_\_  
 NAME: BEATRIZ A. MENDEZ-LORA LICENSE: 25230

LIGHTING SHEET  
 T.H. 169 STA. 336-366

S.P. NO. 2776-03 (T.H. 169)  
 SHEET NO. 1297 OF 2032 SHEETS

DESIGN PACKAGE T24

SHEET LOCATION SL E

DRAWING NAME CD277603\_T24.LL05

2/7/2018