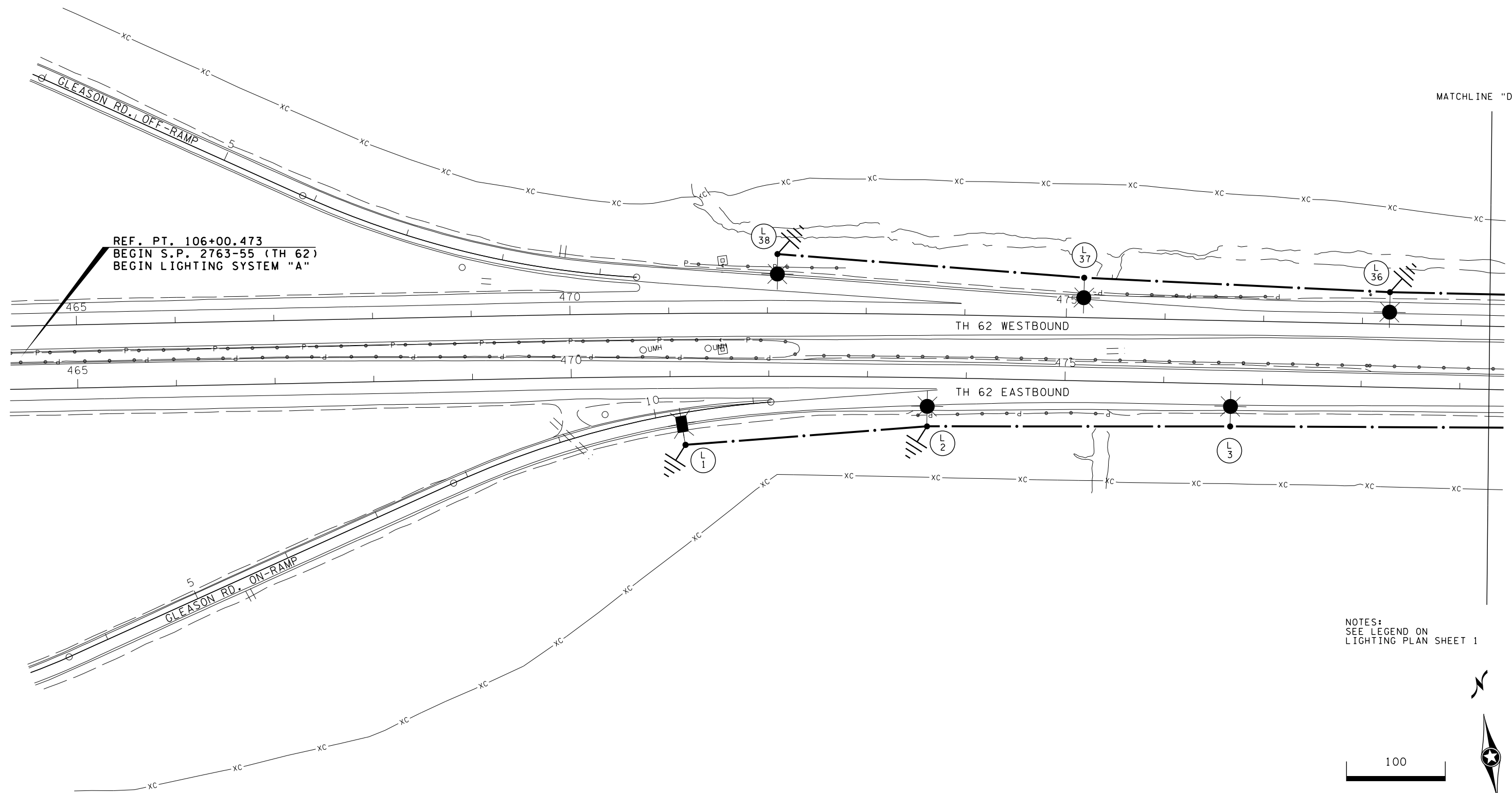
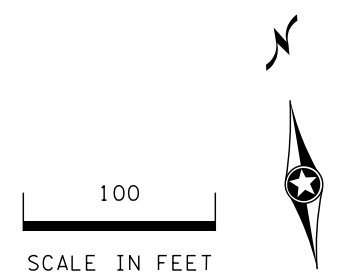


File: \\hrgsmaas\data\20160044\CA\DI\Road_Design\Sheets\CT2763-55_101.dgn
 PlotDvr: pdf_bw_no_level.plt
 Model: 05
 PenTbl: hrg.tbl
 Last Saved: 11/15/2016



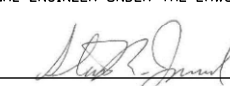
NOTES:
SEE LEGEND ON
LIGHTING PLAN SHEET 1



NO.	REVISIONS	BY	APR.	DATE

DESIGNED SRJ	CHECKED TAJ
DRAWN TAJ	APPROVED NLP
DATE 11/15/2016	JOB NO. 2763-55

I HEREBY CERTIFY THAT THIS PLAN, SPECIFICATION, OR REPORT WAS PREPARED BY ME OR UNDER MY DIRECT SUPERVISION AND THAT I AM A DULY LICENSED PROFESSIONAL ENGINEER UNDER THE LAWS OF THE STATE OF MINNESOTA.

 L.I.C. NO. 25307
 TYPED NAME STEVEN R JUNOD DATE 11/9/2016



HRGreen
 COURT INTERNATIONAL BUILDING
 2550 UNIVERSITY AVENUE W., SUITE 400N
 ST. PAUL, MINNESOTA 55114-1052
 P: 651.644.4389 F: 651.644.9446

SP 2763-55
 SP 2773-13
 TH 62

MINNESOTA DEPARTMENT OF TRANSPORTATION
 LIGHTING PLAN
 LIGHTING SYSTEM "A"
 SHEET 5 OF 10

SHEET
 18
 OF
 33

File: \\hrgsmaas\data\20160404\CAD\Road_Designsheets\CT2763-55_ID1.dgn

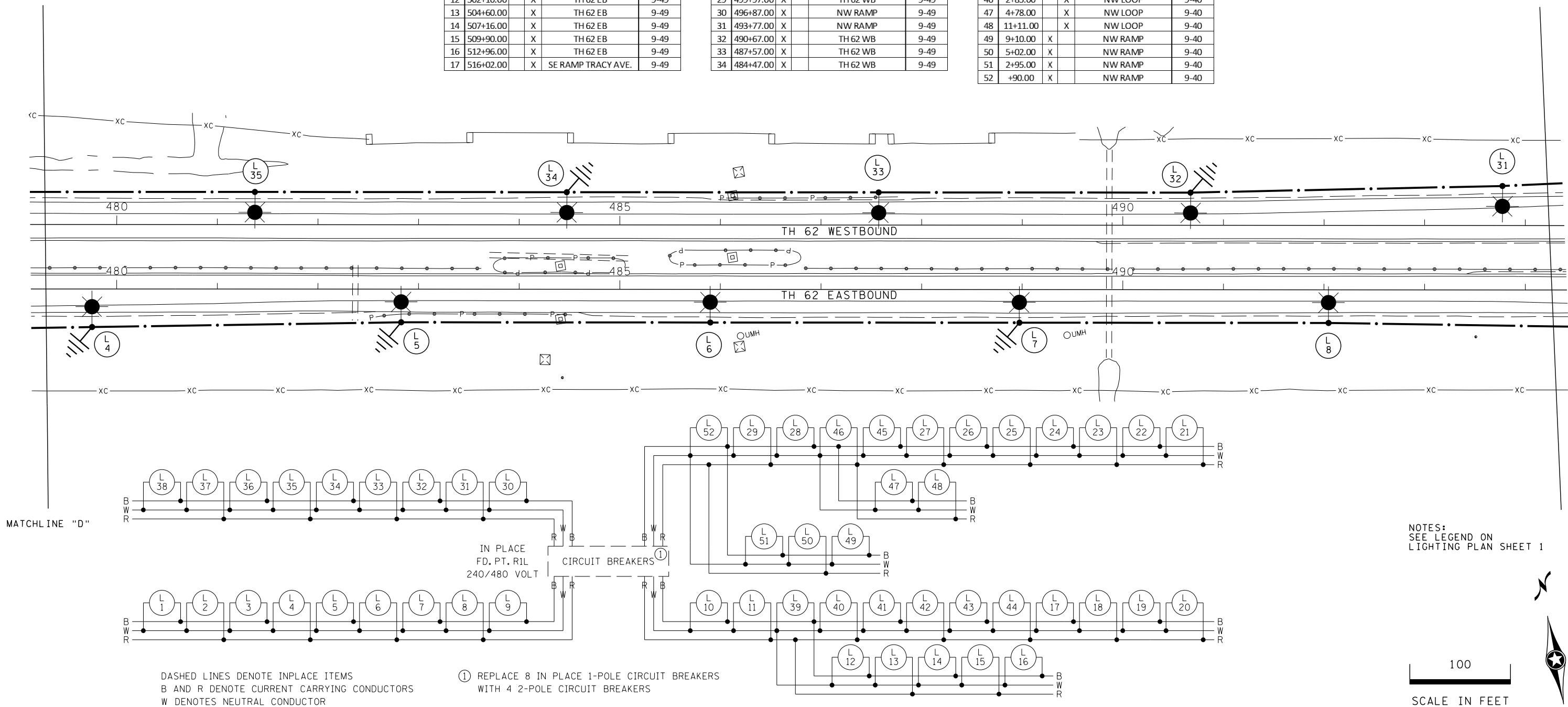
PlotDvr: pdf_bw_no_level.plt
Model: 06

PenTbl: hrg.tbl
Last Saved: 11/15/2016

FEEDPOINT R1L				
LIGHTING STANDARDS AND FOUNDATIONS				
NO.	STATION	LT.	RT.	LOCATION
1	10+25.00	X		SE RAMP GLEASON RD.
2	473+61.00	X		TH 62 EB
3	476+68.00	X		TH 62 EB
4	479+76.00	X		TH 62 EB
5	482+83.00	X		TH 62 EB
6	485+90.00	X		TH 62 EB
7	488+97.00	X		TH 62 EB
8	492+05.00	X		TH 62 EB
9	495+11.00	X		TH 62 EB
10	498+25.00	X		SW RAMP
11	+04.00	X		SW RAMP
12	502+10.00	X		TH 62 EB
13	504+60.00	X		TH 62 EB
14	507+16.00	X		TH 62 EB
15	509+90.00	X		TH 62 EB
16	512+96.00	X		TH 62 EB
17	516+02.00	X		SE RAMP TRACY AVE.

FEEDPOINT R1L				
LIGHTING STANDARDS AND FOUNDATIONS				
NO.	STATION	LT.	RT.	LOCATION
18	519+09.00	X		SE RAMP TRACY AVE.
19	522+15.00	X		SE RAMP TRACY AVE.
20	525+35.00	X		TH 62 EB
21	526+15.00	X		TH 62 WB
22	523+04.00	X		TH 62 WB
23	519+93.00	X		TH 62 WB
24	516+82.00	X		TH 62 WB
25	513+71.00	X		TH 62 WB
26	510+60.00	X		NW LOOP
27	507+74.00	X		NW LOOP
28	503+15.00	X		TH 62 WB
29	499+97.00	X		TH 62 WB
30	496+87.00	X		NW RAMP
31	493+77.00	X		NW RAMP
32	490+67.00	X		TH 62 WB
33	487+57.00	X		TH 62 WB
34	484+47.00	X		TH 62 WB

FEEDPOINT R1L				
LIGHTING STANDARDS AND FOUNDATIONS				
NO.	STATION	LT.	RT.	LOCATION
35	481+37.00	X		TH 62 WB
36	478+27.00	X		TH 62 WB
37	475+17.00	X		TH 62 WB
38	472+10.00	X		TH 62 WB
39	2+64.00		X	SW RAMP
40	5+22.00		X	SW RAMP
41	7+80.00		X	SW RAMP
42	+85.00		X	SE RAMP TRACY AVE.
43	3+20.00		X	SE RAMP TRACY AVE.
44	5+55.00		X	SE RAMP TRACY AVE.
45	+88.00		X	NW LOOP
46	2+85.00		X	NW LOOP
47	4+78.00		X	NW LOOP
48	11+11.00		X	NW LOOP
49	9+10.00		X	NW RAMP
50	5+02.00		X	NW RAMP
51	2+95.00		X	NW RAMP
52	+90.00		X	NW RAMP



DASHED LINES DENOTE INPLACE ITEMS
B AND R DENOTE CURRENT CARRYING CONDUCTORS
W DENOTES NEUTRAL CONDUCTOR

① REPLACE 8 IN PLACE 1-POLE CIRCUIT BREAKERS WITH 4 2-POLE CIRCUIT BREAKERS

NOTES:
SEE LEGEND ON
LIGHTING PLAN SHEET 1

100
SCALE IN FEET

MATCHLINE "E"

MATCHLINE "D"

NO.	REVISIONS	BY	APR.	DATE

DESIGNED SRJ	CHECKED TAJ
DRAWN TAJ	APPROVED NLP
DATE 11/15/2016	JOB NO. 2763-55

I HEREBY CERTIFY THAT THIS PLAN, SPECIFICATION, OR REPORT WAS PREPARED BY ME OR UNDER MY DIRECT SUPERVISION AND THAT I AM A DULY LICENSED PROFESSIONAL ENGINEER UNDER THE LAWS OF THE STATE OF MINNESOTA.

Steven R. Junod
L.I.C. NO. 25307
TYPED NAME STEVEN R JUNOD DATE 11/9/2016



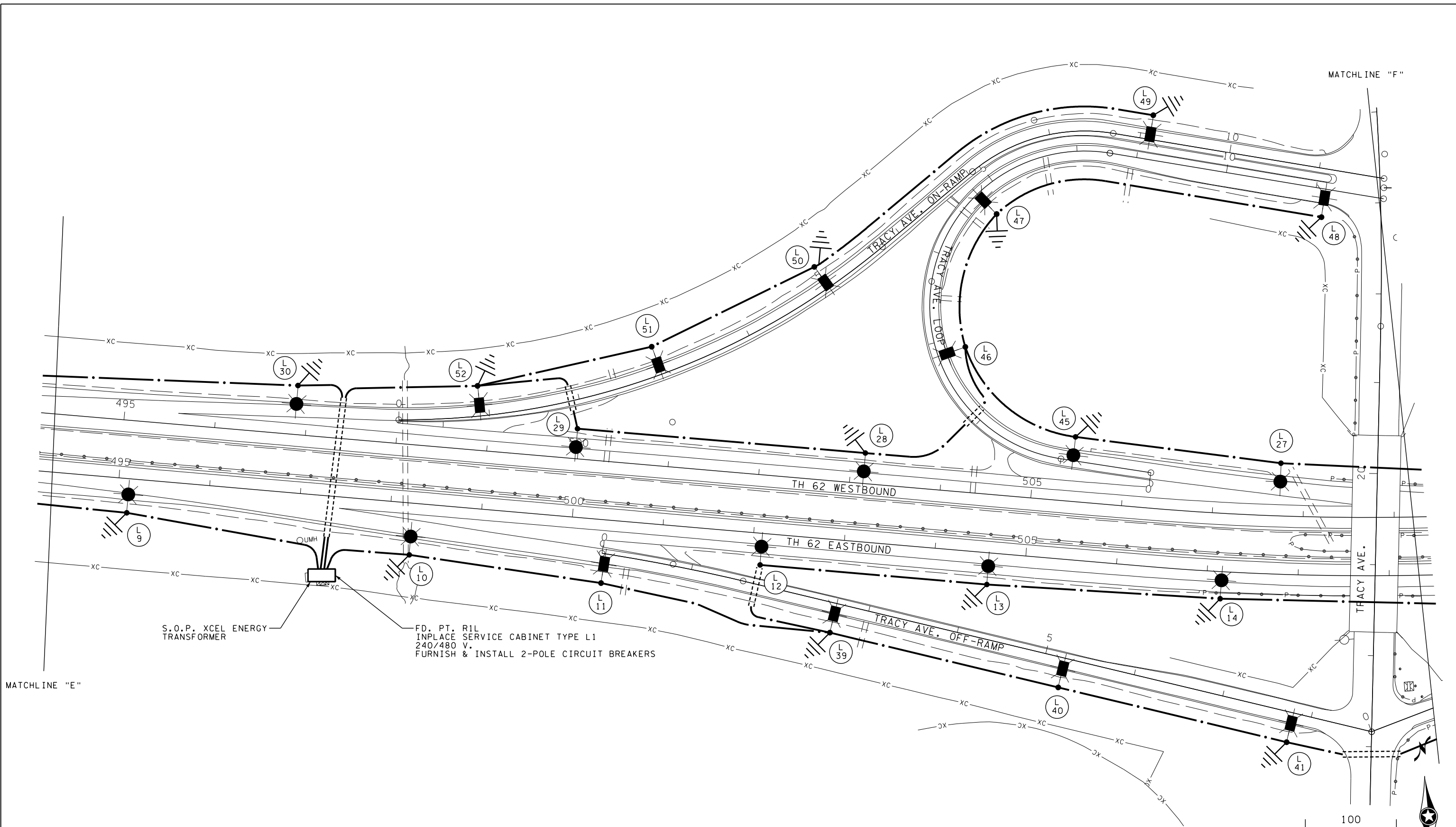
COURT INTERNATIONAL BUILDING
2550 UNIVERSITY AVENUE W., SUITE 400N
ST. PAUL, MINNESOTA 55114-1052
P: 651.644.4389 F: 651.644.3446

SP 2763-55
SP 2773-13
TH 62

MINNESOTA DEPARTMENT OF TRANSPORTATION
LIGHTING PLAN
LIGHTING SYSTEM "A"
SHEET 6 OF 10

SHEET
19
OF
33

File: \\hrgsmaas\data\20160044\CAD\Road_Design\Sheets\CT2763-55_J01.dgn
 PlotDir: pdf_bw_no_level.plt
 Model: 07
 PenTbl: hrg.tbl
 Last Saved: 11/15/2016



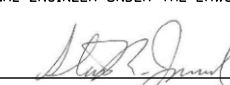
FEEDPOINT: R1L LOCATION: TH 62 AT TRACY AVE.
METER ADDRESS: 5800 HIGHWAY 62 W EDINA 55450

NOTES: SEE LEGEND ON LIGHTING PLAN SHEET 1
 SCALE IN FEET

NO.	REVISIONS	BY	APR.	DATE

DESIGNED SRJ	CHECKED TAJ
DRAWN TAJ	APPROVED NLP
DATE 11/15/2016	JOB NO. 2763-55

I HEREBY CERTIFY THAT THIS PLAN, SPECIFICATION, OR REPORT WAS PREPARED BY ME OR UNDER MY DIRECT SUPERVISION AND THAT I AM A DULY LICENSED PROFESSIONAL ENGINEER UNDER THE LAWS OF THE STATE OF MINNESOTA.


 TYPED NAME **STEVEN R JUNOD** L.I.C. NO. **25307** DATE **11/9/2016**



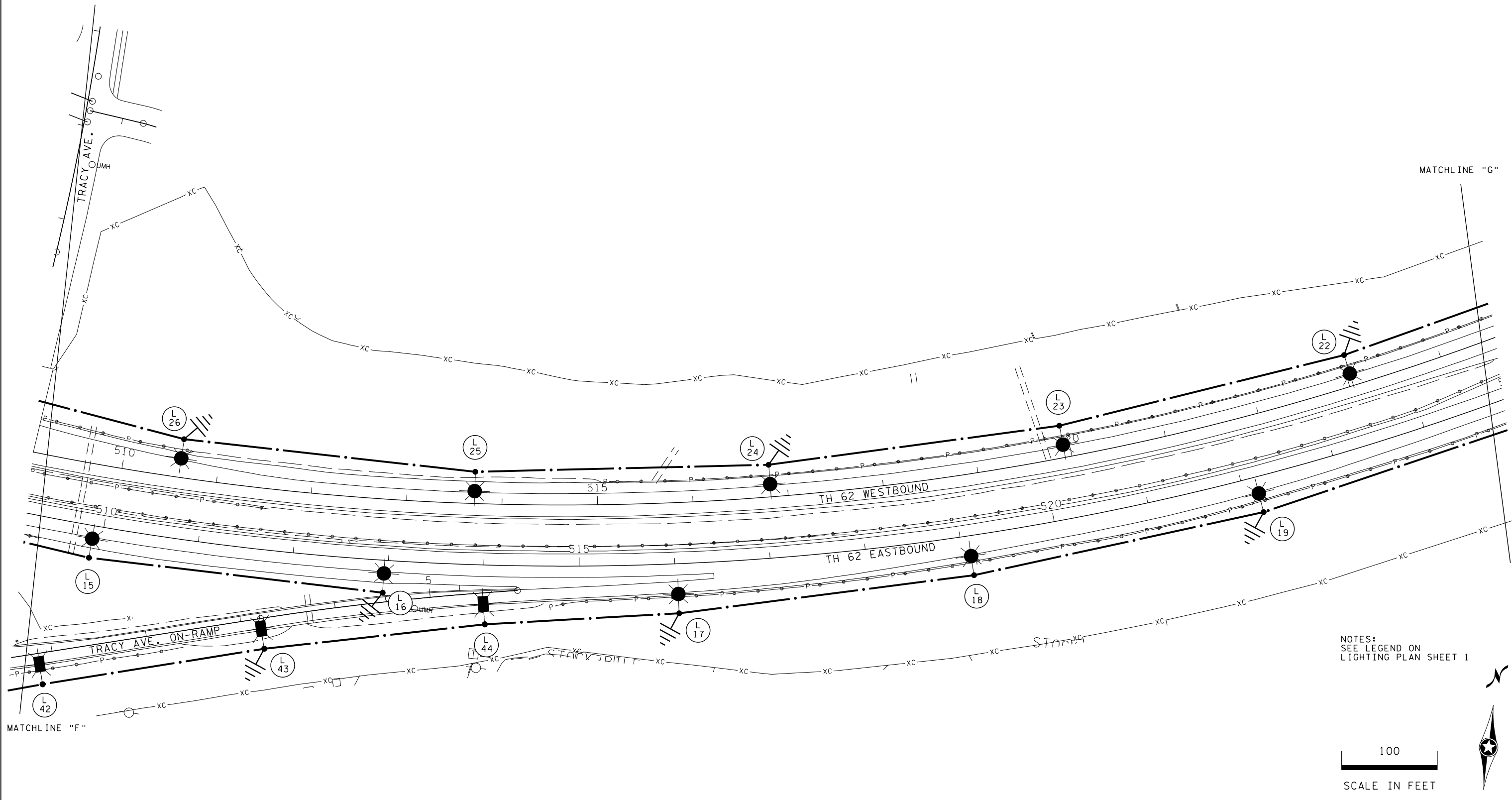
HRGreen
 COURT INTERNATIONAL BUILDING
 2550 UNIVERSITY AVENUE W., SUITE 400N
 ST. PAUL, MINNESOTA 55114-1052
 P: 651.644.4389 F: 651.644.9446

SP 2763-55
 SP 2773-13
 TH 62

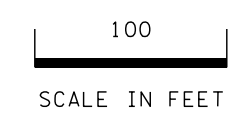
MINNESOTA DEPARTMENT OF TRANSPORTATION
 LIGHTING PLAN
 LIGHTING SYSTEM "A"
 SHEET 7 OF 10

SHEET 20
 OF 33

File: \\hrgspmas\data\20160044\CAD\Road_Designsheets\CT2763-55_J01.dgn
 PlotDvr: pdf_bw_no_level.plt
 Model: 08
 PenTbl: hrg.tbl
 Last Saved: 11/15/2016



NOTES:
 SEE LEGEND ON
 LIGHTING PLAN SHEET 1



NO.	REVISIONS	BY	APR.	DATE

DESIGNED SRJ	CHECKED TAJ
DRAWN TAJ	APPROVED NLP
DATE 11/15/2016	JOB NO. 2763-55

I HEREBY CERTIFY THAT THIS PLAN, SPECIFICATION, OR REPORT WAS PREPARED BY ME OR UNDER MY DIRECT SUPERVISION AND THAT I AM A DULY LICENSED PROFESSIONAL ENGINEER UNDER THE LAWS OF THE STATE OF MINNESOTA.

Steven R. Junod
 L.I.C. NO. 25307
 TYPED NAME STEVEN R JUNOD DATE 11/9/2016



SP 2763-55
 SP 2773-13
 TH 62

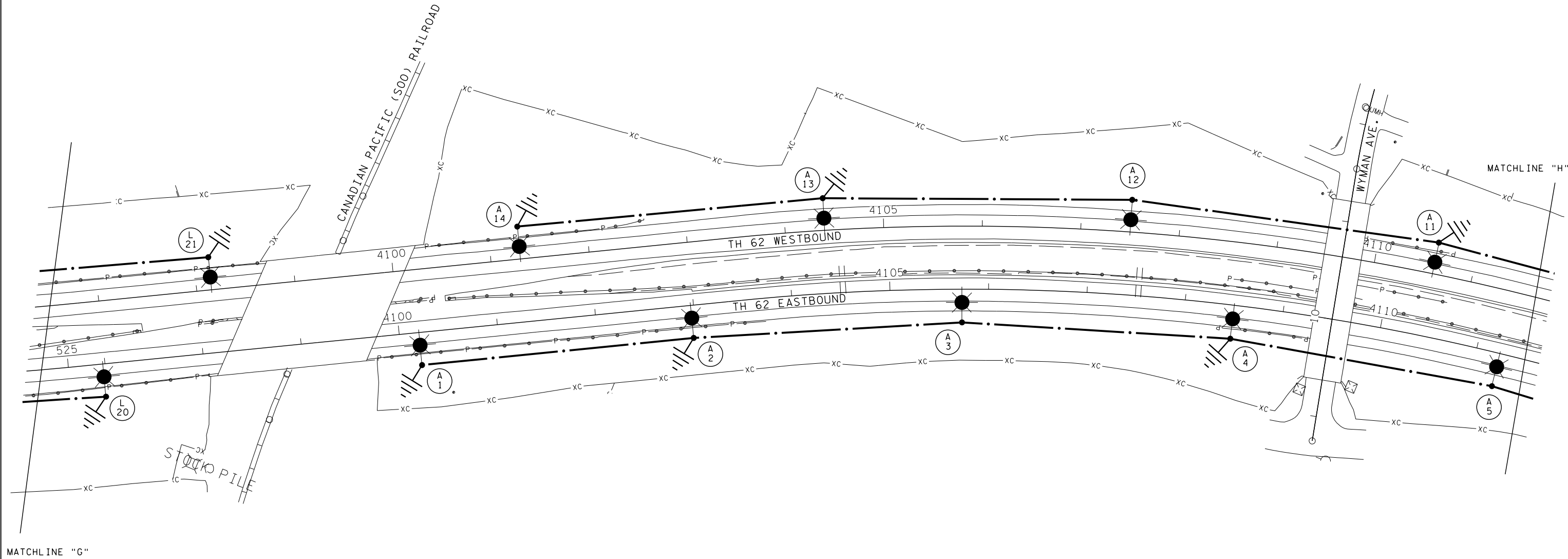
MINNESOTA DEPARTMENT OF TRANSPORTATION
 LIGHTING PLAN
 LIGHTING SYSTEM "A"
 SHEET 8 OF 10

SHEET	21
OF	33

File: \\hrgspnas\data\20160044\CAD\Road_Designsheets\CT2763-55_101.dgn

PlotDvr: pdf_bw_no_level.plt
Model: 09

PlotDvr: hrg.tbl
Last Saved: 11/15/2016



NOTES:
SEE LEGEND ON
LIGHTING PLAN SHEET 1

100
SCALE IN FEET

NO.	REVISIONS	BY	APR.	DATE

DESIGNED SRJ	CHECKED TAJ
DRAWN TAJ	APPROVED NLP
DATE 11/15/2016	JOB NO. 2763-55

I HEREBY CERTIFY THAT THIS PLAN, SPECIFICATION, OR REPORT WAS PREPARED BY ME OR UNDER MY DIRECT SUPERVISION AND THAT I AM A DULY LICENSED PROFESSIONAL ENGINEER UNDER THE LAWS OF THE STATE OF MINNESOTA.

Steven R. Junod
L.I.C. NO. 25307
TYPED NAME STEVEN R JUNOD DATE 11/9/2016



COURT INTERNATIONAL BUILDING
2550 UNIVERSITY AVENUE W., SUITE 400N
ST. PAUL, MINNESOTA 55114-1052
P: 651.644.4389 F: 651.644.9446

SP 2763-55
SP 2773-13
TH 62

MINNESOTA DEPARTMENT OF TRANSPORTATION

LIGHTING PLAN
LIGHTING SYSTEM "A"
SHEET 9 OF 10

SHEET	22
OF	33