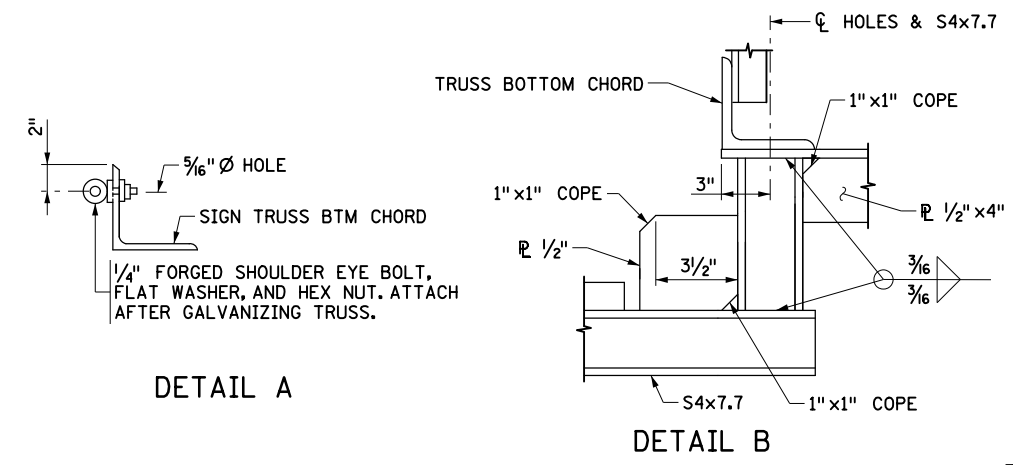
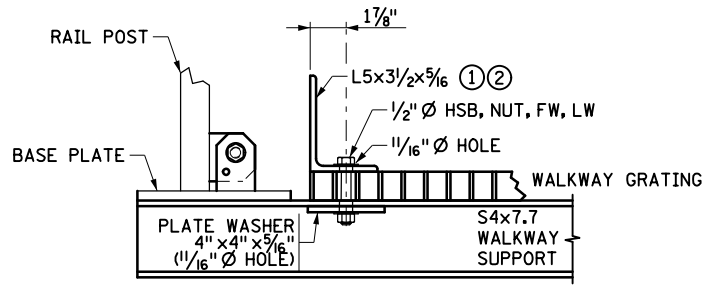


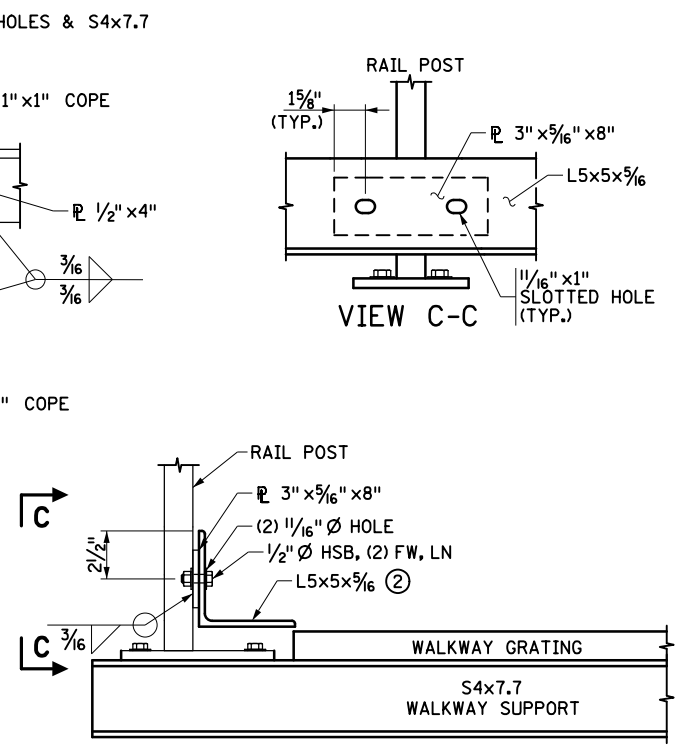
TYPICAL WALKWAY DETAILS
NOT DRAWN TO SCALE



DETAIL A



DETAIL B

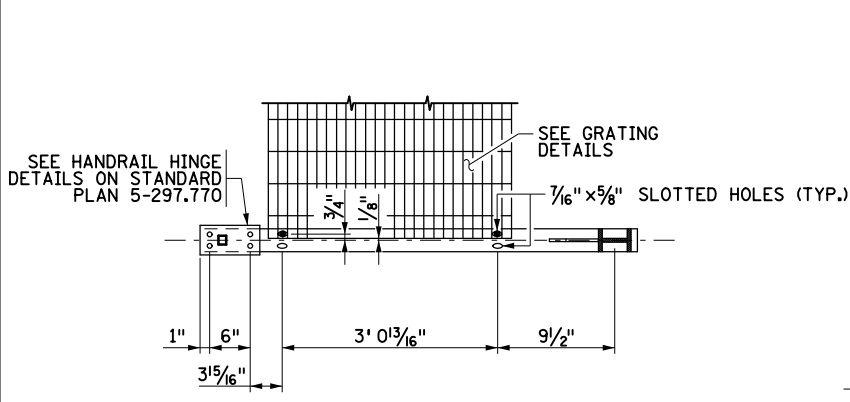


FIXED RAILING TOE ANGLE DETAIL

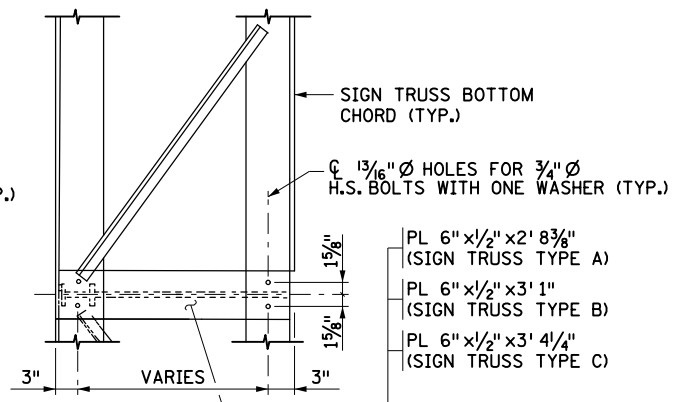
WALKWAY SUPPORTS		
DESIGN WALKWAY LENGTH (FT)	SUPPORTS REQUIRED	
MIN.	MAX.*	
3	6	2
6	12	3
12	18	4
18	24	5
24	30	6
30	36	7
36	42	8
42	48	9
48	54	10
54	60	11
60	66	12
66	72	13
72	78	14
78	84	15
84	90	16

STANDARD WALKWAY SECTIONS ARE FABRICATED IN 6' AND 9' LENGTHS

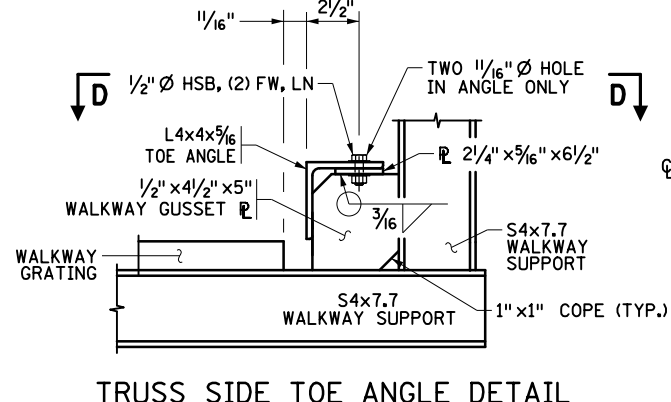
* IF THE DESIGN WALKWAY LENGTH MATCHES THE MAXIMUM VALUE, USE THE NUMBER OF SUPPORTS SPECIFIED FOR THE SHORTER DESIGN LENGTH.



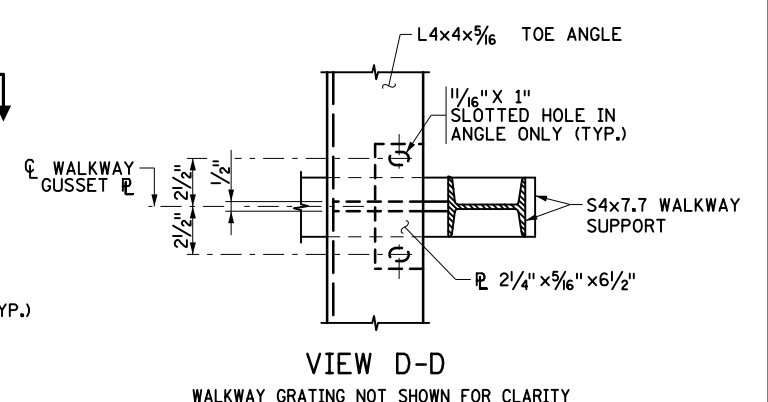
VIEW A-A



VIEW B-B



TRUSS SIDE TOE ANGLE DETAIL



VIEW D-D

WALKWAY GRATING NOT SHOWN FOR CLARITY

GENERAL NOTES:

- WALKWAY DETAILS SHOWN ARE TYPICAL FOR SIMPLE SPAN STRUCTURES.
- WHEN THE FORMAT SHEET INDICATES THAT THE WALKWAY IS CONTINUOUS FROM ONE SPAN TO ANOTHER, DETERMINATION OF THE SPECIAL LENGTH GRATING AND HANDRAIL PANELS REQUIRED IS THE CONTRACTOR'S RESPONSIBILITY.
- PROVIDE ADEQUATE WEEP HOLES FOR HOT-DIP GALVANIZING.
- PROVIDE WALKWAY ACCESS TO DMS. EXTEND WALKWAY 3" FROM THE DMS TO THE END OF THE TRUSS.
- REFER TO STANDARD PLAN 5-297.765 FOR WALKWAY SUPPORTS ADJACENT TO POST CONNECTIONS. REFER TO STANDARD PLAN 5-297.772 FOR WALKWAY SUPPORTS ADJACENT TO DMS.

SAFETY CHAIN NOTES:

- ATTACH THE SAFETY CHAIN AT EACH END OF THE HANDRAIL.
- USE 3/16" STAINLESS STEEL STRAIGHT LENGTH CHAIN WITH APPROXIMATELY 12 LINKS PER FOOT.
- THE CHAIN AND ITS CONNECTIONS SHALL HAVE A MINIMUM RATED WORKING LOAD OF 700 LBS.

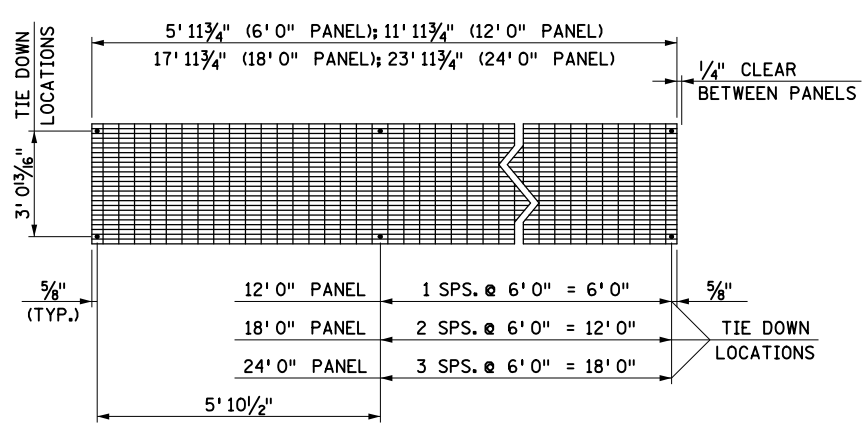
GRATING NOTE:

USE 3' 4 3/4" WIDE GRATING WITH 1/2" x 3/16" SERRATED BEARING BARS AT 13/16" CENTERS AND CROSS BARS AT 4" CENTERS. ATTACH GRATING AT EACH TIE DOWN LOCATION WITH A STAINLESS STEEL SADDLE ANCHOR DESIGNED FOR THIS SPECIFIC USE.

KICK PLATE NOTES:

- INTERRUPT KICK PLATE AS REQUIRED TO ALLOW FOR FOLDING OF HANDRAIL. MAXIMUM OPENING BETWEEN ADJACENT KICK PLATES IS 3".
- END OF RAILING AND TOE ANGLE SHALL BE AT LEAST 4" FROM THE END OF THE DMS SIDE DOOR, BUT NO MORE THAN 6".
- TYPICAL WALKWAY SHOWN IN THIS DETAIL IS FOR TRUSSES SUPPORTING WALK-IN DMS ONLY. ADJUST THIS HEIGHT WHEN NEEDED FOR TRUSSES SUPPORTING FLAT PANELS AND DMS.

GRATING PLAN - 6' 0", 12' 0", 18' 0", OR 24' 0" STANDARD PANELS



LEAD EXPERT OFFICE
KEVIN WESTERN
STATE BRIDGE ENGINEER

STANDARD OVERHEAD SIGN STRUCTURES - DESIGN D
WALKWAY DETAILS

APPROVED: 03-05-2020
REVISED:

THOMAS STYRBICKI
STATE DESIGN ENGINEER

STANDARD PLAN
5-297.769

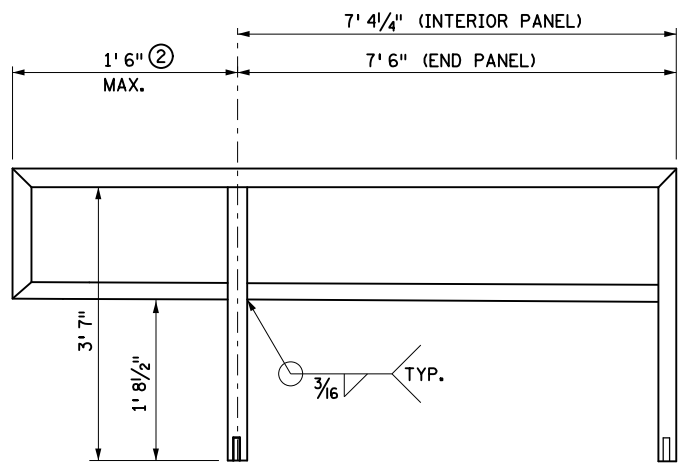
1 OF 3



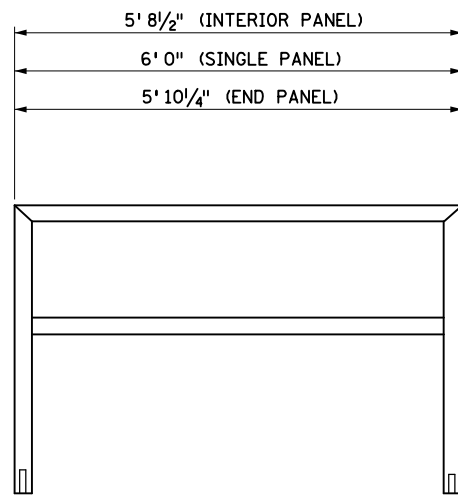
STANDARD PLAN

STATE PROJ. NO.
TRUNK HWY.

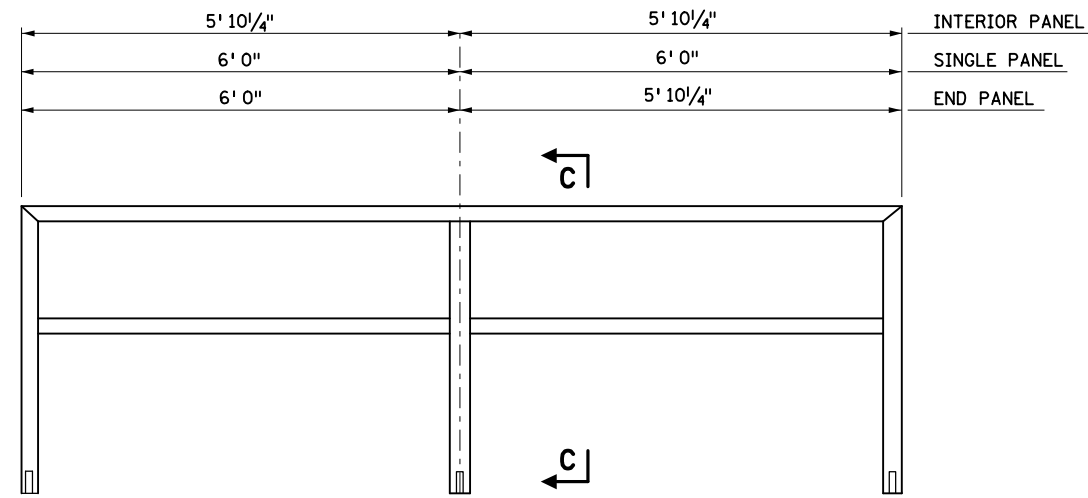
SHEET NO.
TOTAL SHEETS



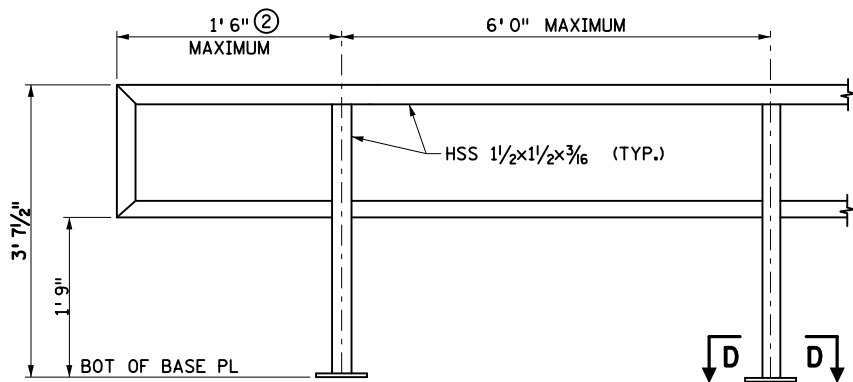
HSS 1/2x1/2x3/16 (TYP.)
RAILING ELEVATION AT END OF CANTILEVER



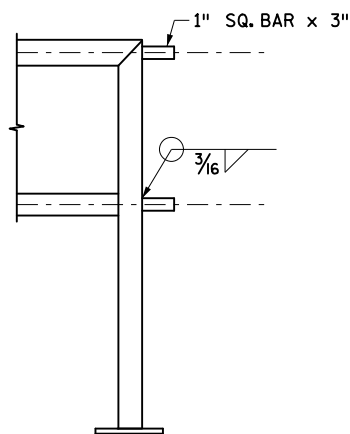
HSS 1/2x1/2x3/16 (TYP.)
RAILING ELEVATION 6' PANEL



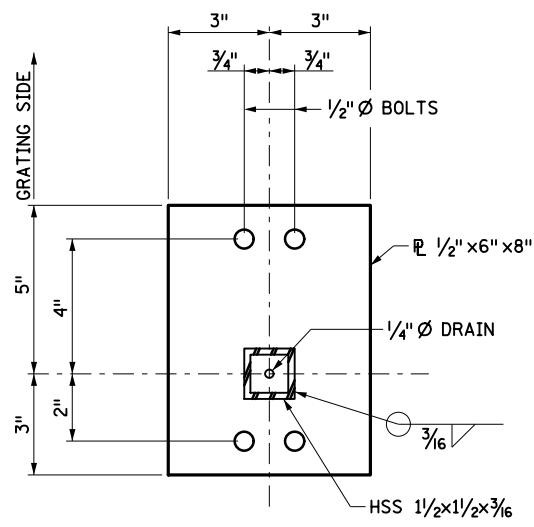
HSS 1/2x1/2x3/16 (TYP.)
RAILING ELEVATION 12' PANEL



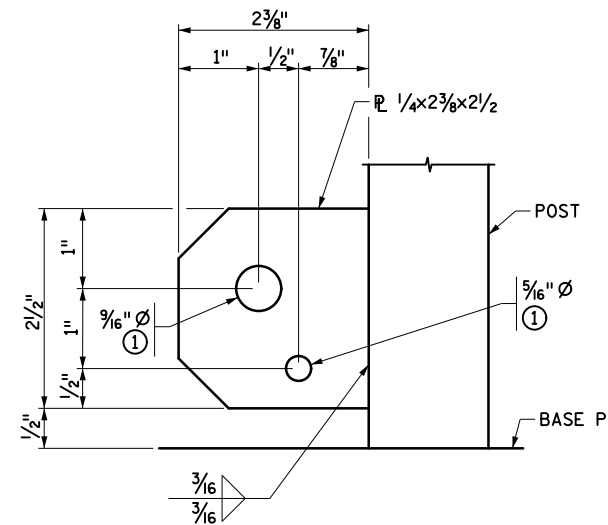
FIXED HANDRAIL FOR OH SIGN



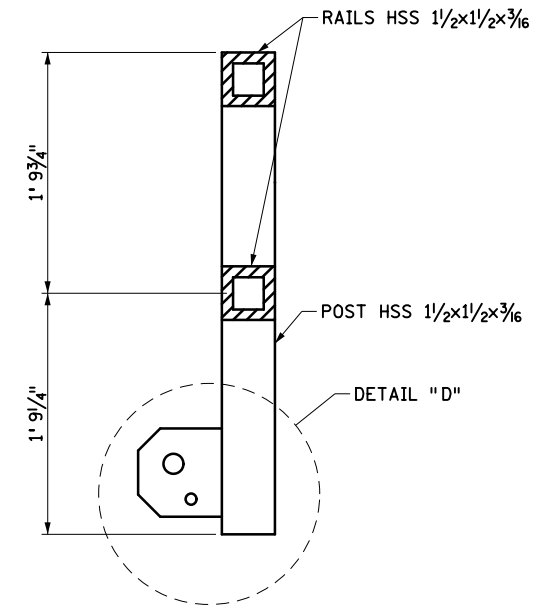
FIXED RAIL SPLICE DETAIL



SECTION D-D
BASE PLATE - FIXED HANDRAIL POST



DETAIL "D"



SECTION C-C
FOLDING HANDRAIL POST

NOTES:

- ① REAM RAILING SUPPORT BOLT AND LOCKING PIN HOLES AFTER GALVANIZING TO ENSURE BOLT AND PIN FIT.
- ② END OF RAILING SHALL BE AT LEAST 4" FROM THE END OF THE DMS SIDE DOOR, BUT NO MORE THAN 6".

LEAD EXPERT OFFICE
KEVIN WESTERN
STATE BRIDGE ENGINEER



STANDARD OVERHEAD SIGN STRUCTURES - DESIGN D
WALKWAY DETAILS: RAILING

APPROVED: 03-05-2020
REVISED:

Thomas Styrbicki
THOMAS STYRBICKI
STATE DESIGN ENGINEER

STANDARD PLAN
5-297.769

2 OF 3

STANDARD PLAN

STATE PROJ. NO.
TRUNK HWY.

SHEET NO.
TOTAL SHEETS

