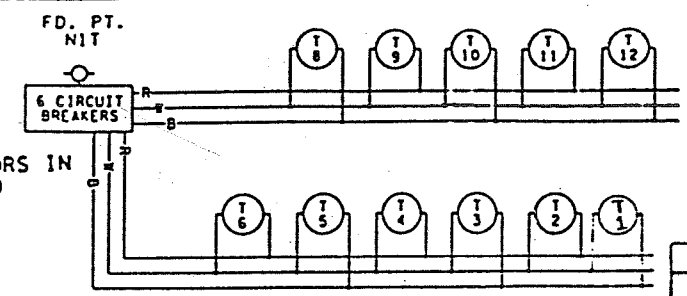


B & R DENOTE CURRENT CARRYING CONDUCTORS
W DENOTES NEUTRAL CONDUCTOR

FD. PT. N1P

LIGHTING STANDARDS & BASES					
NO.	STATION	LT.	RT.	LOCATION	TYPE
1	13+00	-	-	CENNWR	6-40 (4)
2	15+50	-	-	CENNWR	6-40
3	18+00	-	-	CENNWR	6-40
4	20+50	-	-	CENNWR	6-40
5	23+00	-	-	CENNWR	6-40



INPLACE CONDUCTORS IN 53 mm CONDUIT TO POWER SOURCE

F & I PULL BOX MAKE SPLICE TO INPLACE CONDUCTORS FROM POWER SOURCE

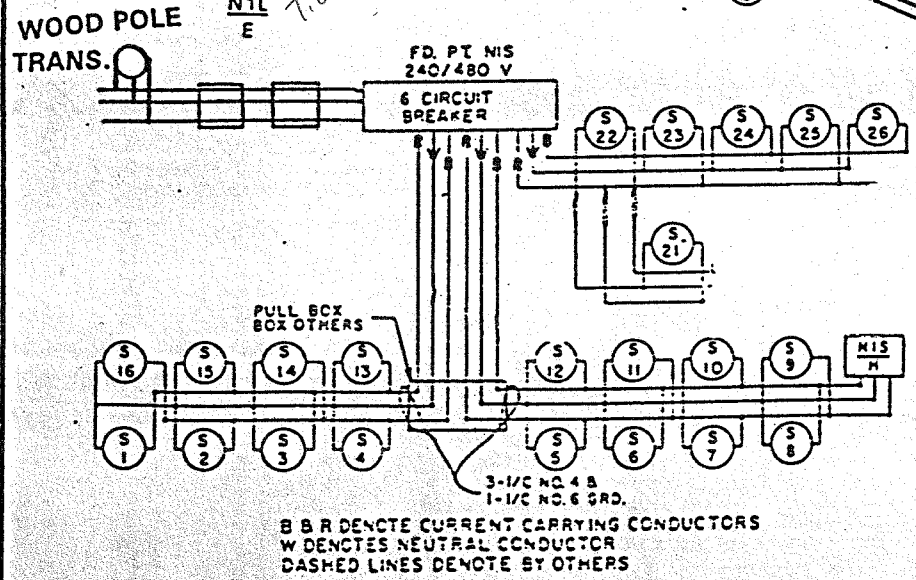
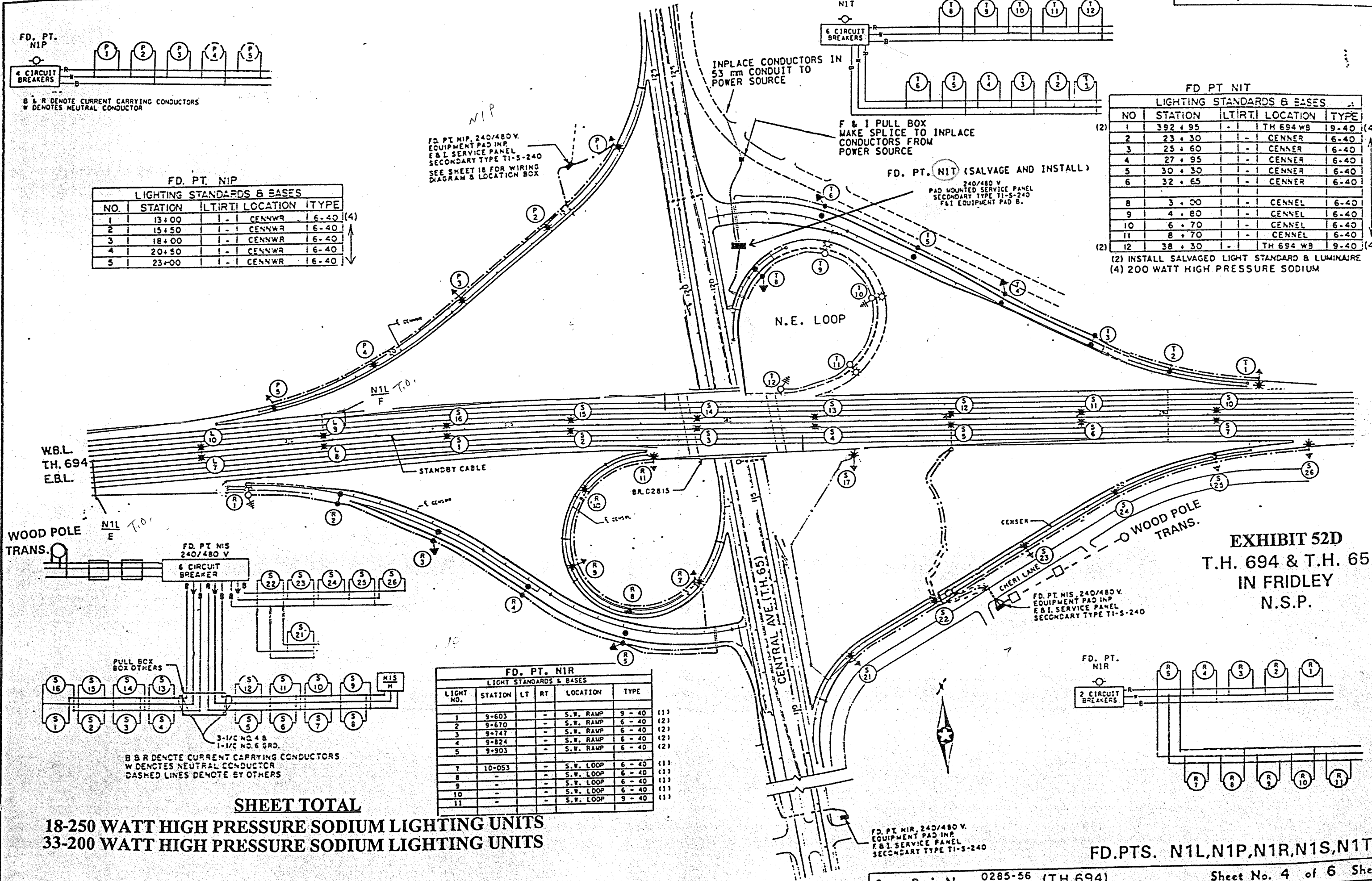
FD PT NIT

LIGHTING STANDARDS & BASES					
NO	STATION	LT.	RT.	LOCATION	TYPE
(2) 1	392 + 95	-	-	TH 694 WB	19-40 (4)
2	23 + 30	-	-	CENNER	6-40
3	25 + 60	-	-	CENNER	6-40
4	27 + 95	-	-	CENNER	6-40
5	30 + 30	-	-	CENNER	6-40
6	32 + 65	-	-	CENNER	6-40
8	3 + 00	-	-	CENNEL	6-40
9	4 + 80	-	-	CENNEL	6-40
10	6 + 70	-	-	CENNEL	6-40
11	8 + 70	-	-	CENNEL	6-40
(2) 12	38 + 30	-	-	TH 694 WB	9-40 (4)

(2) INSTALL SALVAGED LIGHT STANDARD & LUMINAIRE
(4) 200 WATT HIGH PRESSURE SODIUM

FD. PT. N1P, 240/480V. EQUIPMENT PAD INP. F&I SERVICE PANEL SECONDARY TYPE T1-S-240 SEE SHEET 18 FOR WIRING DIAGRAM & LOCATION BOX

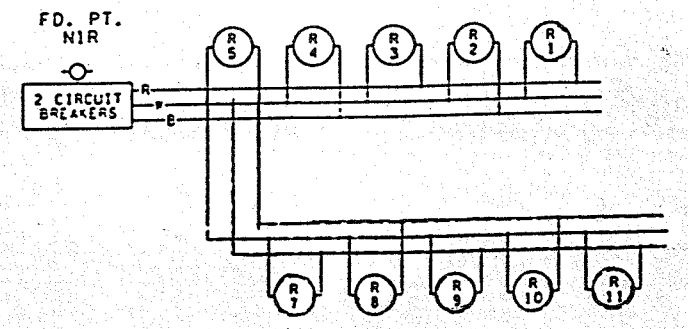
FD. PT. NIT (SALVAGE AND INSTALL) 240/480 V PAD MOUNTED SERVICE PANEL SECONDARY TYPE T1-S-240 F&I EQUIPMENT PAD B.



B & R DENOTE CURRENT CARRYING CONDUCTORS
W DENOTES NEUTRAL CONDUCTOR
DASHED LINES DENOTE BY OTHERS

FD. PT. N1R

LIGHT STANDARDS & BASES					
LIGHT NO.	STATION	LT	RT	LOCATION	TYPE
1	9+603	-	-	S.W. RAMP	9-40 (1)
2	9+670	-	-	S.W. RAMP	6-40 (2)
3	9+747	-	-	S.W. RAMP	6-40 (2)
4	9+824	-	-	S.W. RAMP	6-40 (2)
5	9+903	-	-	S.W. RAMP	6-40 (2)
7	10+053	-	-	S.W. LOOP	6-40 (1)
8	-	-	-	S.W. LOOP	6-40 (1)
9	-	-	-	S.W. LOOP	6-40 (1)
10	-	-	-	S.W. LOOP	6-40 (1)
11	-	-	-	S.W. LOOP	9-40 (1)



FD. PT. N1R, 240/480 V. EQUIPMENT PAD INP. F&I SERVICE PANEL SECONDARY TYPE T1-S-240

SHEET TOTAL
18-250 WATT HIGH PRESSURE SODIUM LIGHTING UNITS
33-200 WATT HIGH PRESSURE SODIUM LIGHTING UNITS

EXHIBIT 52D
T.H. 694 & T.H. 65
IN FRIDLEY
N.S.P.

FD.PTS. N1L,N1P,N1R,N1S,N1T

LEGEND

- INPLACE LIGHTING UNIT
- LIGHTING UNIT
- UNDERPASS LUMINAIRE
- INPLACE PAD MOUNTED FD. PT. CABINET 240/480 VOLT
- HANDHOLE
- DIRECT BURIED CABLE 4 CONDUCTOR NO. 4
- INPLACE DIRECT BURIED CABLE
- PERMANENT GROUND ROD (25 OHMS OR LESS)
- 3" PVC (UNLESS NOTED OTHERWISE)
- INPLACE CONDUIT

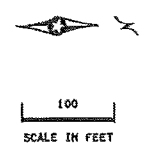
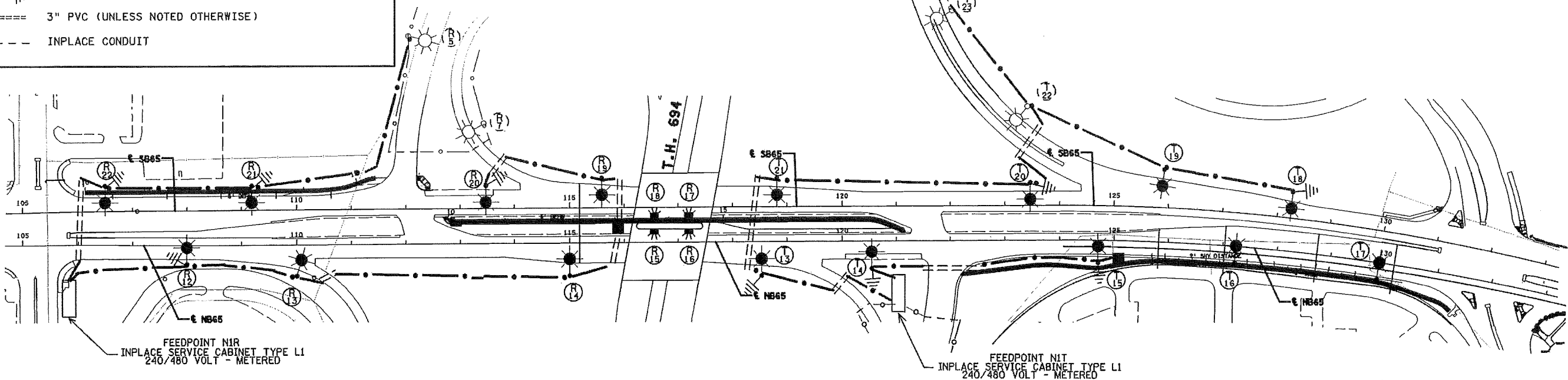
FEEDPOINT N1R

LIGHTING STANDARDS AND FOUNDATIONS					
NO.	STATION	LT.	RT.	LOCATION	TYPE
1-5	INPLACE				
7-11	INPLACE				
12	108+00		-	NB TH 65	9-40
13	110+10		-	NB TH 65	9-40
14	115+00		-	NB TH 65	9-40
15	116+60		-	NB TH 65	L
16	117+20		-	NB TH 65	L
17	117+20		-	SB TH 65	L
18	116+60		-	SB TH 65	L
19	115+60		-	SB TH 65	9-40
20	113+50		-	SB TH 65	9-40
21	109+20		-	SB TH 65	9-40
22	106+50		-	SB TH 65	9-40

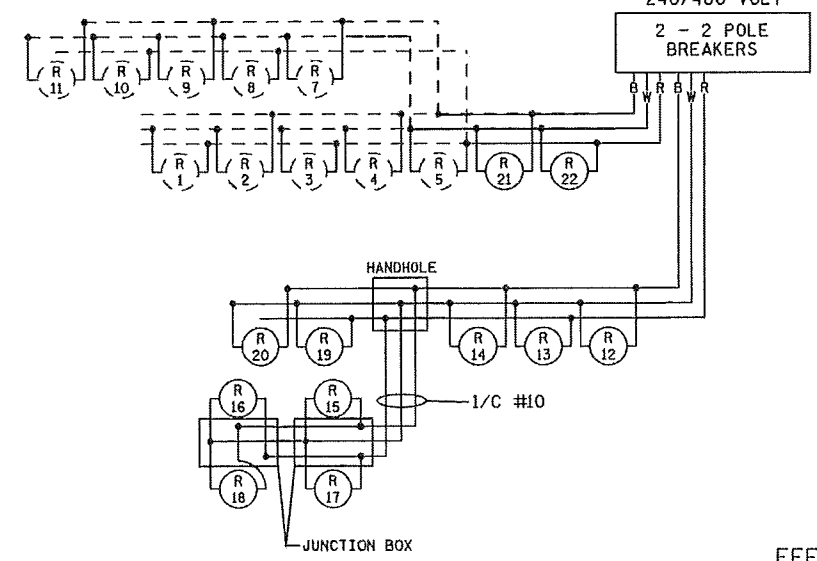
FEEDPOINT N1T

LIGHTING STANDARDS AND FOUNDATIONS					
NO.	STATION	LT.	RT.	LOCATION	TYPE
1-6	INPLACE				
8-12	INPLACE				
13	118+50		-	NB TH 65	9-40
14	120+55		-	NB TH 65	9-40
15	124+70		-	NB TH 65	9-40
16	127+25		-	NB TH 65	9B-40
17	129+90		-	NB TH 65	9B-40
18	128+25		-	SB TH 65	9-40
19	125+90		-	SB TH 65	9-40
20	123+50		-	SB TH 65	9-40
21	118+80		-	SB TH 65	9-40
22-26	INPLACE				

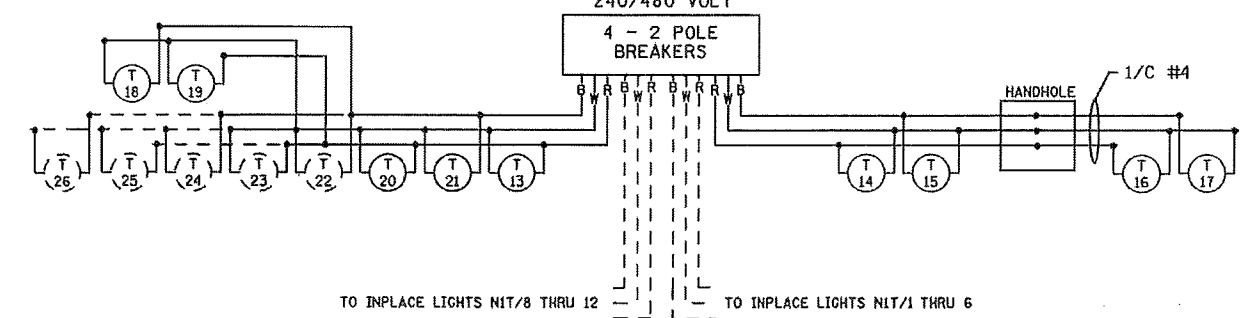
1. RENUMBER POLES AS SHOWN ON PLAN



DASHED LINES DENOTE INPLACE ITEMS
 W DENOTES NEUTRAL CONDUCTOR
 B AND R DENOTE CURRENT CARRYING CONDUCTORS
 FD. PT. N1R
 240/480 VOLT



DASHED LINES DENOTE INPLACE ITEMS
 W DENOTES NEUTRAL CONDUCTOR
 B AND R DENOTE CURRENT CARRYING CONDUCTORS
 FD. PT. N1T
 240/480 VOLT



TO INPLACE LIGHTS N1T/8 THRU 12 TO INPLACE LIGHTS N1T/1 THRU 6

FEEDPOINT: N1T METER ADDRESS: 785 HWY 65, FRIDLEY 55432

FEED POINTS N1R AND N1T

BY	DATE	REVISIONS	FEEDPOINT: N1R	METER ADDRESS:	LOCATION: T,H, 65 AT T.H. 694	LIGHTING PLAN	
DRAWN BY: PB CKD BY: GB DATE:			CERTIFIED BY: <i>Michael P. Gubinsky</i> LIC. NO. 19863 DATE: 3/12/2014		STATE PROJ.NO.0207-100 (T.H.65) SHEET NO. SL5 OF SL5 SHEETS		

DISTRICT #: METRO
 PLOT NAME: 10207-100.JI
 PATH & FILENAME: IP_PWP-d15708N0207-100.JI.10
 PLOTTED/REVISED: 3/12/2014