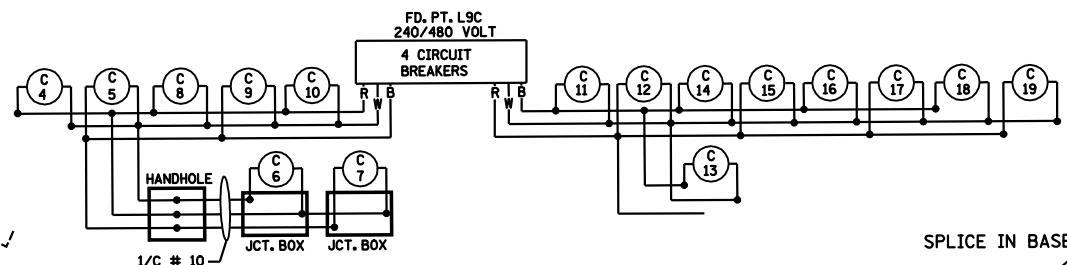
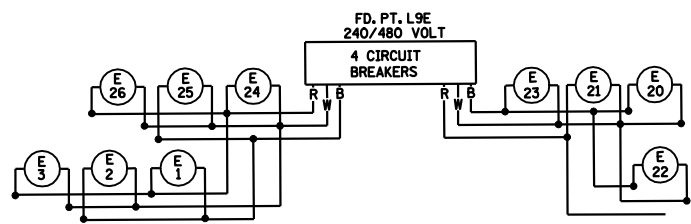


PLOTTED/REVISED: 5-17-05

B AND R DENOTE CURRENT CARRYING CONDUCTORS  
W DENOTES NEUTRAL CONDUCTOR



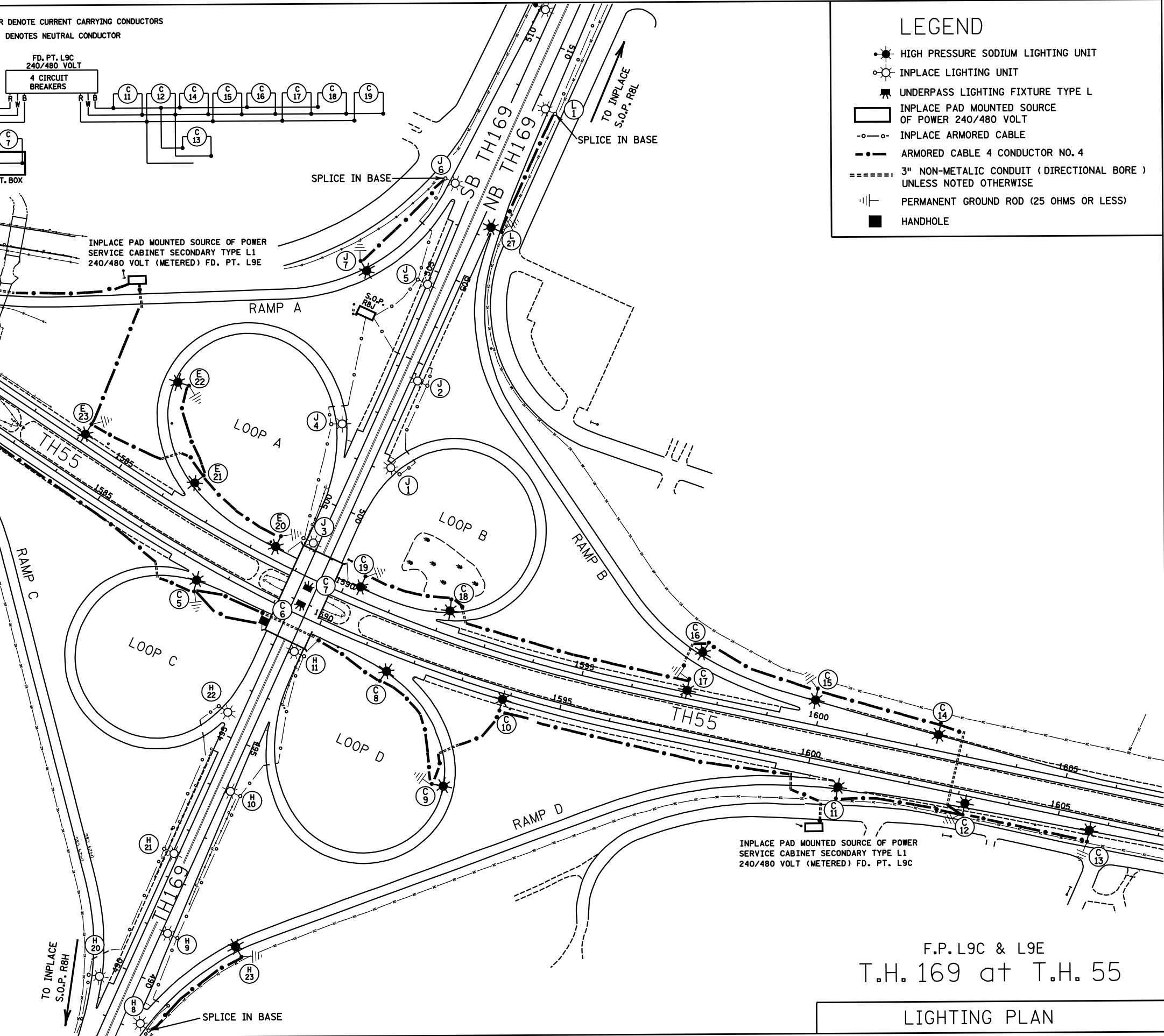
B AND R DENOTE CURRENT CARRYING CONDUCTORS  
W DENOTES NEUTRAL CONDUCTOR



### LEGEND

- HIGH PRESSURE SODIUM LIGHTING UNIT
- INPLACE LIGHTING UNIT
- UNDERPASS LIGHTING FIXTURE TYPE L
- INPLACE PAD MOUNTED SOURCE OF POWER 240/480 VOLT
- INPLACE ARMORED CABLE
- ARMORED CABLE 4 CONDUCTOR NO. 4
- 3" NON-METALLIC CONDUIT (DIRECTIONAL BORE) UNLESS NOTED OTHERWISE
- PERMANENT GROUND ROD (25 OHMS OR LESS)
- HANDHOLE

LIGHTING STANDARDS AND BASES						
NO.	STATION	LT.	RT.	LOCATION	TYPE	WATTAGE
E 1	1577+05			EB55	9-40	250
E 2	1579+55					
E 3	1581+95					
C 4	1582+30					
C 5	1587+50				9-40	
C 6	1589+20				TYPE L	
C 7	1589+85				TYPE L	
C 8	1591+50				9-40	
C 9	1593+05					
C 10	1593+85					
C 11	1600+65					
C 12	1603+15					
C 13	1605+65			EB55		
C 14	1602+35			WB55		
C 15	1599+85					
C 16	1597+60					
C 17	1597+36					
C 18	1592+05					
C 19	1590+30					
E 20	1588+45					
E 21	1586+50					
E 22	1595+25					
E 23	1584+05					
E 24	1577+20					
E 25	1574+75					
E 26	1572+25			WB55		
J 7	504+60			SB169		
H 23	491+15			NB169	9-40	250
L 27	506+20			NB169	9-49	400



INPLACE PAD MOUNTED SOURCE OF POWER  
SERVICE CABINET SECONDARY TYPE L1  
240/480 VOLT (METERED) FD. PT. L9C

F.P. L9C & L9E  
T.H. 169 at T.H. 55

LIGHTING PLAN  
SHEET 7 OF 7 SHEETS

CERTIFIED BY \_\_\_\_\_ LICENSED PROFESSIONAL ENGINEER LIC. NO. 23084 DATE \_\_\_\_\_

State Project 2750-65 (T.H. 169)

DISTRICT: METRO  
PLOT NAME: 2750-65 10