

SEE LEGEND SHEET L12

FD. PT. J8C  
 PADMOUNTED SERVICE CABINET  
 SECONDARY TYPE L1  
 240/480 VOLT (METERED)  
 2" R.S.C., 3-1/C #2 FROM  
 XCEL PAD MOUNTED TRANSFORMER  
 TO SERVICE CABINET.  
 EQUIPMENT PAD MODIFIED "A"

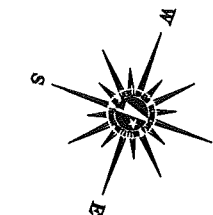
S.O.P. XCEL TRANSFORMER  
 240/480 VOLT

MAINTENANCE SERVICE DISCONNECT  
 & METER (MN/DOT BRIDGE).  
 2" R.S.C., 3-1/C #2

AESTHETIC LIGHTING SERVICE  
 DISCONNECT & METER (ST. PAUL)  
 2" R.S.C., 3-1/C #2

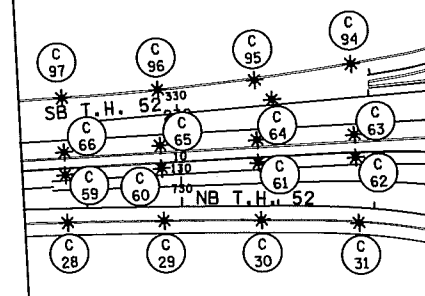
2 - 1.5" NMC FROM BRIDGES TO HH  
 4 - 1.5" NMC FROM BRIDGE TO HH  
 3" NMC

100  
 SCALE IN FEET



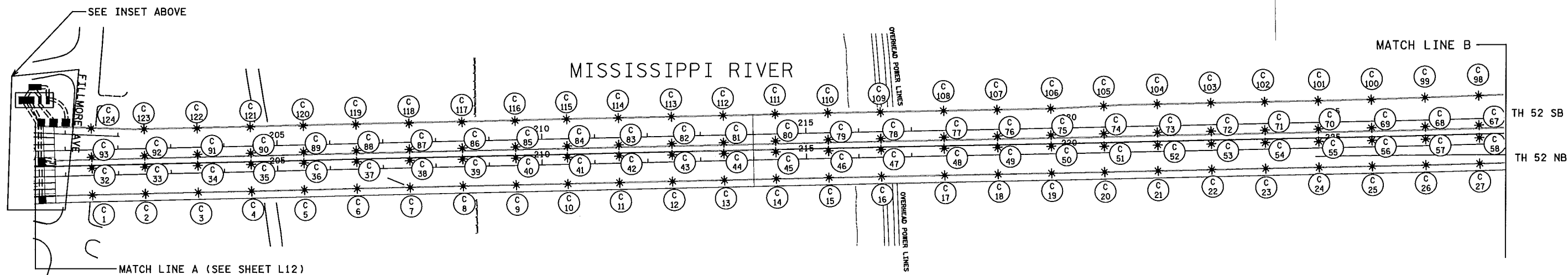
MATCH LINE B

MATCHLINE C (SEE SHEET L16)



PLOTTED/REVISED: 8/19/2010

DISTRICT #: METRO  
 IPLOT NAME: 76244-030L13  
 PATH & FILENAME: IP\_PWP-d1236163\6244-030.dgn



NOTE: ALL CONDUCTORS FOR LIGHTING CIRCUITS SHALL BE 1/C #4 UNLESS NOTED OTHERWISE

FD. PT. J8C

BY	DATE	REVISIONS	FEEDPOINT: J8C	LOCATION: T.H. 52 AND FILLMORE AVE E	<b>LIGHTING PLAN</b>
			METER ADDRESS: 280 FILLMORE AVE E ST. PAUL 55107		
DRAWN BY: PB	CKD BY: GB	DATE:	CERTIFIED BY: <i>Michael P. Lubinsky</i>	LIC. NO. 19863	DATE: 8/19/2010
			STATE PROJ. NO. 6244-30 (T.H.52)		SHEET NO. L13 OF L24 SHEETS

PLOTTED/REVISED: 8/19/2010

DISTRICT #: METRO  
 IPLOT NAME: 16244-030L14  
 PATH & FILENAME: IP\_PWP-d1236163V6244-030.dgn

FEEDPOINT J8C  
 LIGHTING STANDARDS AND BASES

NO.	STATION	LT.	RT.	LOCATION	TYPE	WATT
1	201 + 48		X	N.B. T.H. 52	1XB - 17	100
2	202 + 48		X	N.B. T.H. 52		100
3	203 + 48		X	N.B. T.H. 52		100
4	204 + 48		X	N.B. T.H. 52		100
5	205 + 48		X	N.B. T.H. 52		100
6	206 + 48		X	N.B. T.H. 52		100
7	207 + 48		X	N.B. T.H. 52		100
8	208 + 48		X	N.B. T.H. 52		100
9	209 + 48		X	N.B. T.H. 52		100
10	210 + 46		X	N.B. T.H. 52		100
11	211 + 44		X	N.B. T.H. 52		100
12	212 + 44		X	N.B. T.H. 52		100
13	213 + 42		X	N.B. T.H. 52		100
14	214 + 40		X	N.B. T.H. 52		100
15	215 + 40		X	N.B. T.H. 52		100
16	216 + 40		X	N.B. T.H. 52		100
17	217 + 60		X	N.B. T.H. 52		100
18	218 + 61.5		X	N.B. T.H. 52		100
19	219 + 63		X	N.B. T.H. 52		100
20	220 + 64.5		X	N.B. T.H. 52		100
21	221 + 66		X	N.B. T.H. 52		100
22	222 + 67.5		X	N.B. T.H. 52		100
23	223 + 69		X	N.B. T.H. 52		100
24	224 + 70.5		X	N.B. T.H. 52		100
25	225 + 72		X	N.B. T.H. 52		100
26	226 + 73.5		X	N.B. T.H. 52		100
27	227 + 75		X	N.B. T.H. 52		100
28	228 + 76.5		X	N.B. T.H. 52		100
29	229 + 78		X	N.B. T.H. 52		100
30	230 + 79.5		X	N.B. T.H. 52		100
31	231 + 81		X	N.B. T.H. 52		100
32	201 + 48	X		N.B. T.H. 52		100
33	202 + 48	X		N.B. T.H. 52		100
34	203 + 48	X		N.B. T.H. 52		100
35	204 + 48	X		N.B. T.H. 52		100
36	205 + 48	X		N.B. T.H. 52		100
37	206 + 48	X		N.B. T.H. 52		100
38	207 + 48	X		N.B. T.H. 52		100
39	208 + 48	X		N.B. T.H. 52		100
40	209 + 48	X		N.B. T.H. 52		100
41	210 + 46	X		N.B. T.H. 52		100
42	211 + 44	X		N.B. T.H. 52		100
43	212 + 44	X		N.B. T.H. 52		100
44	213 + 42	X		N.B. T.H. 52		100
45	214 + 40	X		N.B. T.H. 52		100
46	215 + 40	X		N.B. T.H. 52		100
47	216 + 40	X		N.B. T.H. 52		100
48	217 + 60	X		N.B. T.H. 52		100
49	218 + 61.5	X		N.B. T.H. 52		100
50	219 + 63	X		N.B. T.H. 52		100
51	220 + 64.5	X		N.B. T.H. 52		100
52	221 + 66	X		N.B. T.H. 52	1XB - 17	100

FEEDPOINT J8C  
 LIGHTING STANDARDS AND BASES

NO.	STATION	LT.	RT.	LOCATION	TYPE	WATT
53	222 + 67.5	X		N.B. T.H. 52	1XB - 17	100
54	223 + 69	X		N.B. T.H. 52		100
55	224 + 70.5	X		N.B. T.H. 52		100
56	225 + 72	X		N.B. T.H. 52		100
57	226 + 73.5	X		N.B. T.H. 52		100
58	227 + 75	X		N.B. T.H. 52		100
59	228 + 76.5	X		N.B. T.H. 52		100
60	229 + 78	X		N.B. T.H. 52		100
61	230 + 79.5	X		N.B. T.H. 52		100
62	231 + 81	X		N.B. T.H. 52		100
63	231 + 81		X	S.B. T.H. 52		100
64	230 + 79.5		X	S.B. T.H. 52		100
65	229 + 78		X	S.B. T.H. 52		100
66	228 + 76.5		X	S.B. T.H. 52		100
67	227 + 75		X	S.B. T.H. 52		100
68	226 + 73.5		X	S.B. T.H. 52		100
69	225 + 72		X	S.B. T.H. 52		100
70	224 + 70.5		X	S.B. T.H. 52		100
71	223 + 69		X	S.B. T.H. 52		100
72	222 + 67.5		X	S.B. T.H. 52		100
73	221 + 66		X	S.B. T.H. 52		100
74	220 + 64.5		X	S.B. T.H. 52		100
75	219 + 63		X	S.B. T.H. 52		100
76	218 + 61.5		X	S.B. T.H. 52		100
77	217 + 60		X	S.B. T.H. 52		100
78	216 + 40		X	S.B. T.H. 52		100
79	215 + 40		X	S.B. T.H. 52		100
80	214 + 40		X	S.B. T.H. 52		100
81	213 + 42		X	S.B. T.H. 52		100
82	212 + 44		X	S.B. T.H. 52		100
83	211 + 44		X	S.B. T.H. 52		100
84	210 + 46		X	S.B. T.H. 52		100
85	209 + 48		X	S.B. T.H. 52		100
86	208 + 48		X	S.B. T.H. 52		100
87	207 + 48		X	S.B. T.H. 52		100
88	206 + 48		X	S.B. T.H. 52		100
89	205 + 48		X	S.B. T.H. 52		100
90	204 + 48		X	S.B. T.H. 52		100
91	203 + 48		X	S.B. T.H. 52		100
92	202 + 48		X	S.B. T.H. 52		100
93	201 + 48		X	S.B. T.H. 52		100
94	231 + 81	X		S.B. T.H. 52		100
95	230 + 79.5	X		S.B. T.H. 52		100
96	229 + 78	X		S.B. T.H. 52		100
97	228 + 76.5	X		S.B. T.H. 52		100
98	227 + 75	X		S.B. T.H. 52		100
99	226 + 73.5	X		S.B. T.H. 52		100
100	225 + 72	X		S.B. T.H. 52		100
101	224 + 70.5	X		S.B. T.H. 52		100
102	223 + 69	X		S.B. T.H. 52		100
103	222 + 67.5	X		S.B. T.H. 52		100
104	221 + 66	X		S.B. T.H. 52	1XB - 17	100

FEEDPOINT J8C  
 LIGHTING STANDARDS AND BASES

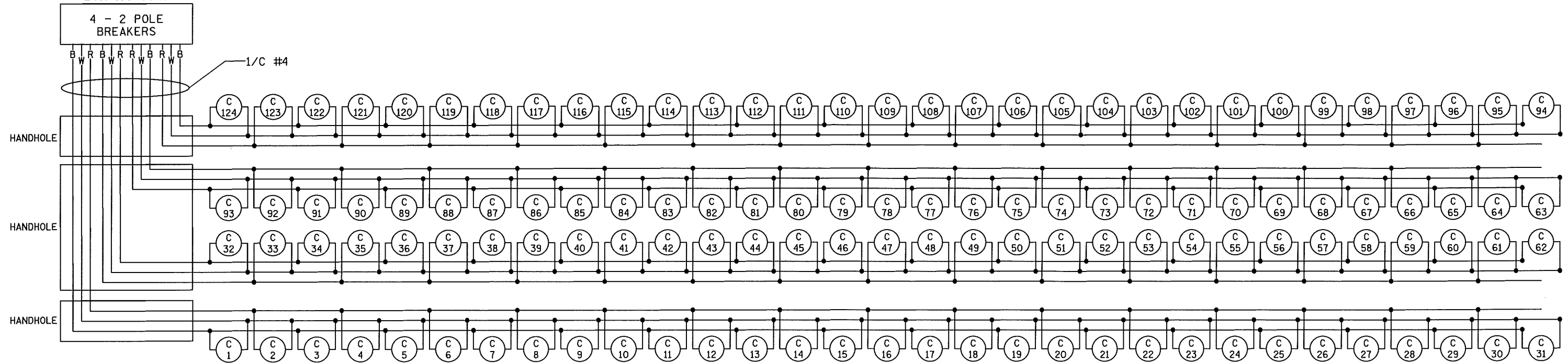
NO.	STATION	LT.	RT.	LOCATION	TYPE	WATT
105	221 + 61.5	X		S.B. T.H. 52	1XB - 17	100
106	219 + 63	X		S.B. T.H. 52		100
107	218 + 61.5	X		S.B. T.H. 52		100
108	217 + 60	X		S.B. T.H. 52		100
109	216 + 40	X		S.B. T.H. 52		100
110	215 + 40	X		S.B. T.H. 52		100
111	214 + 40	X		S.B. T.H. 52		100
112	213 + 42	X		S.B. T.H. 52		100
113	212 + 44	X		S.B. T.H. 52		100
114	211 + 44	X		S.B. T.H. 52		100
115	210 + 46	X		S.B. T.H. 52		100
116	209 + 48	X		S.B. T.H. 52		100
117	208 + 48	X		S.B. T.H. 52		100
118	207 + 48	X		S.B. T.H. 52		100
119	206 + 48	X		S.B. T.H. 52		100
120	205 + 48	X		S.B. T.H. 52		100
121	204 + 48	X		S.B. T.H. 52		100
122	203 + 48	X		S.B. T.H. 52		100
123	202 + 48	X		S.B. T.H. 52		100
124	201 + 48	X		S.B. T.H. 52	1XB - 17	100

FD. PT. J8C

BY	DATE	REVISIONS	FEEDPOINT: J8C	LOCATION: T.H. 52 LAFAYETTE BRIDGE	<b>LIGHTING PLAN</b>
			METER ADDRESS: 280 FILLMORE AVE. ST. PAUL 55107		
DRAWN BY: PB			CERTIFIED BY: <i>Michael P. Gubensky</i>		STATE PROJ. NO. 6244-30 (T.H.52)
CKD BY: GB			LIC. NO. 19863		SHEET NO. L14 OF L24 SHEETS
DATE:			DATE: 8/19/2010		

PLOTTED/REVISED: 8/19/2010

W DENOTES NEUTRAL CONDUCTOR  
 B AND R DENOTE CURRENT  
 CARRYING CONDUCTORS  
 FD. PT. J08C  
 240/480 VOLT



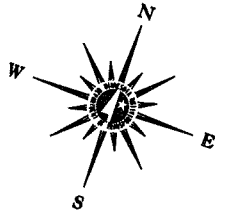
DISTRICT #: METRO  
 IPLOT NAME: 16244-030L15  
 PATH & FILENAME: IP\_PWP-rj1236163V6244-030.dgn

FD. PT. J8C

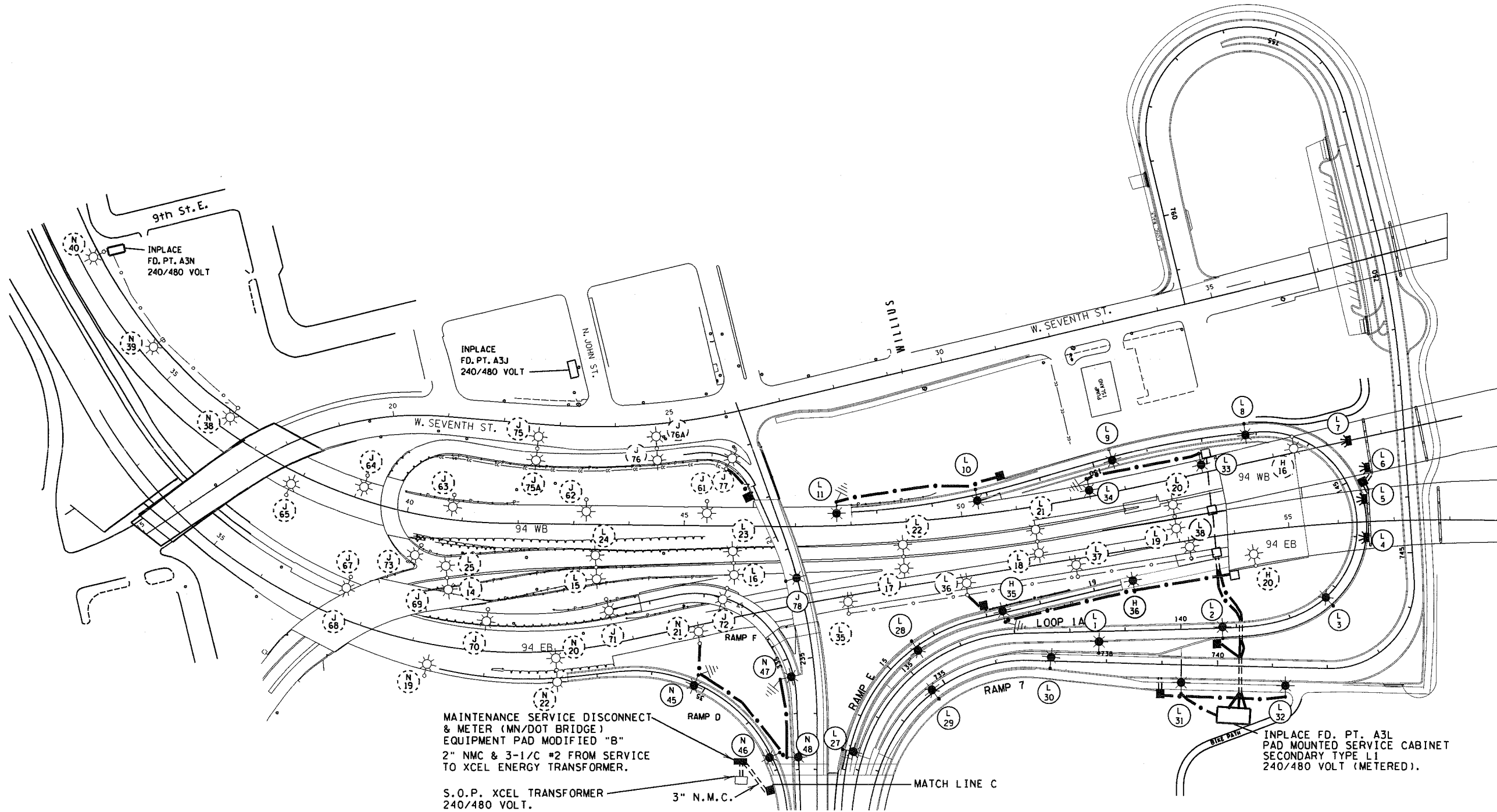
BY	DATE	REVISIONS	FEEDPOINT: J8C	LOCATION: T.H. 52 LAFAYETTE BRIDGE	<b>LIGHTING PLAN</b>
			METER ADDRESS: 280 FILLMORE AVE. ST. PAUL 55107		
DRAWN BY: PB			CERTIFIED BY: <i>Michael P. Gubensky</i> <small>LICENSED PROFESSIONAL ENGINEER</small>		STATE PROJ.NO. 6244-30 (T.H.52)
CKD BY: GB			LIC. NO. 19863 DATE: 8/19/2010		SHEET NO. L15 OF L24 SHEETS
DATE:					

SEE LEGEND SHEET L12

SCALE IN FEET



PLOTTED/REVISED: 7/14/2010



FD. PT. A3H, A3J, A3L, A3N

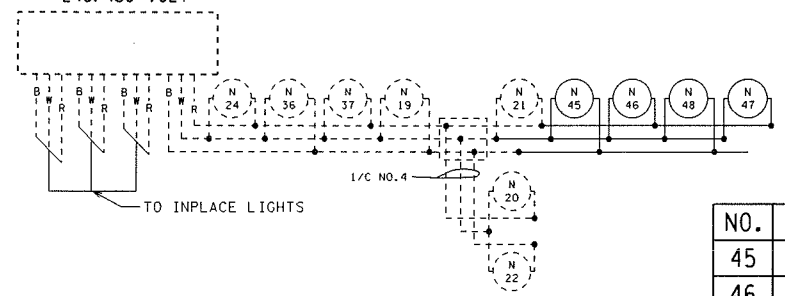
DISTRICT #: METRO  
 IPLOT NAME: 16244-03017  
 PATH & FILENAME: IP\_PWP-d1236163\6244-030.dgn

BY	DATE	REVISIONS	FEEDPOINT: A3H, A3J, A3L, A3N	LOCATION: T.H. 52	LIGHTING PLAN
			METER ADDRESS: TBD		
DRAWN BY: PB			CERTIFIED BY: <i>Michael P. Dubusky</i>	LIC. NO. 19863	STATE PROJ. NO. 6244-030 (T.H. 52)
CKD BY: GB			LICENSED PROFESSIONAL ENGINEER	DATE: 7/14/2010	SHEET NO. L16 OF L24 SHEETS
DATE:					

PLOTTED/REVISED: 7/14/2010

DISTRICT #: METRO  
 IPLOT NAME: 16244-03018  
 PATH & FILENAME: IP\_PWP-d1236163v6244-030.dgn

DASHED LINES DENOTE INPLACE ITEMS  
 W DENOTES NEUTRAL CONDUCTOR  
 B AND R DENOTE CURRENT CARRYING CONDUCTORS  
 FD. PT. A3N  
 240/480 VOLT



**FEEDPOINT A3N  
LIGHTING STANDARDS AND BASES**

NO.	STATION	LT.	RT.	LOCATION	TYPE	WATT
45	35 + 20		X	RAMP D	9-40	250
46	33 + 25		X	RAMP D	9-40	250
47	334 + 67	X		RAMP F	9-40	250
48	333 + 22	X		RAMP F	9-40	250

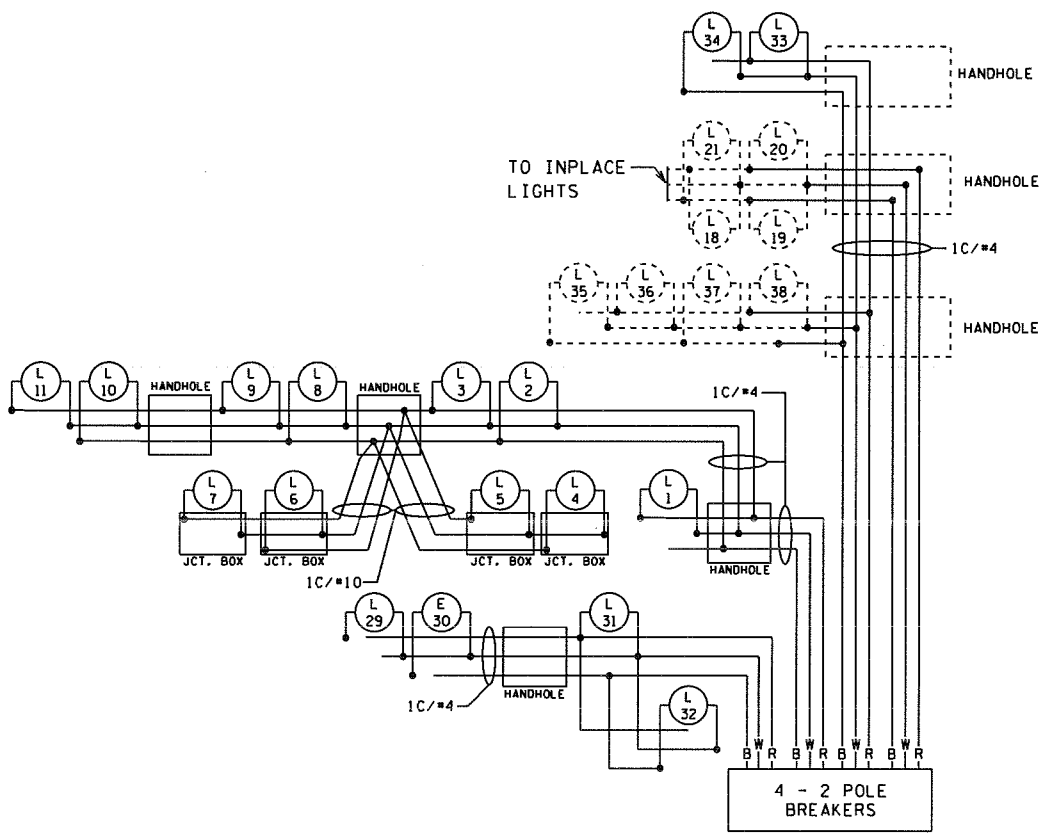
**FEEDPOINT A3L  
LIGHTING STANDARDS AND BASES**

NO.	STATION	LT.	RT.	LOCATION	TYPE	WATT
(1)	1	737 + 85	X	RAMP 7	6B-40	250
(1)	2	140 + 75		X	LOOP 1A	6B-40
(1)	3	142 + 75		X	LOOP 1A	6B-40
	4	144 + 00		X	LOOP 1A	L
	5	144 + 65		X	LOOP 1A	L
	6	145 + 10		X	LOOP 1A	L
	7	145 + 55		X	LOOP 1A	L
(1)	8	147 + 20		X	LOOP 1A	6B-40
(1)	9	149 + 65		X	LOOP 1A	6B-40
	10	152 + 20		X	LOOP 1A	9-40
	11	48 + 75	X	WB TH 94	9-40	250
	13					
	26	36 + 60		X	INPLACE	6BD - 40
	14					
	25	41 + 10		X	INPLACE	6BD - 40
	15					
	24	43 + 60		X	INPLACE	6BD - 40
	16					
	23	46 + 10		X	INPLACE	6BD - 40
	17					
	22	49 + 10		X	INPLACE	6BD - 40
	18					
	21	51 + 60		X	INPLACE	6BD - 40
	19					
	20	54 + 10		X	INPLACE	6BD - 40
(1)	27	13 + 35	X	RAMP E	6B-40	250
(1)	28	15 + 60	X	RAMP E	6B-40	250
(1)	29	734 + 75	X	RAMP 7	6B-40	250
(1)	30	737 + 00	X	RAMP 7	6B-40	250
	31	739 + 35		X	RAMP 7	6-40
	32	741 + 25		x	RAMP 7	9-40
	33	44 + 30	X	94WB	9-40	250
	34	52 + 35	X	94WB	9-40	250

(1) SEE TABLE "ACTUAL POLE HEIGHTS", DETAIL SHEET L2.

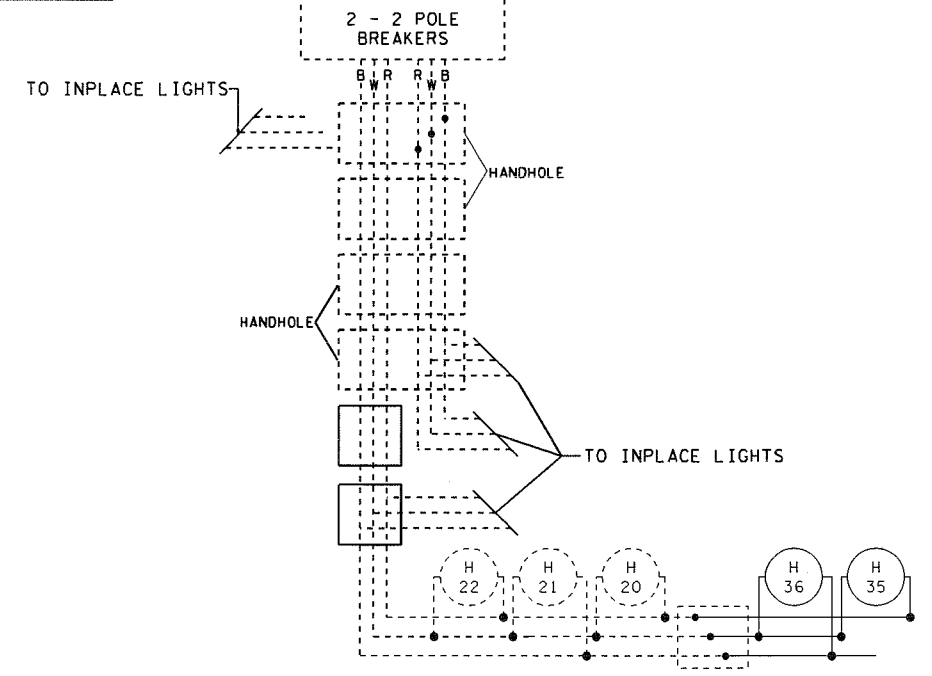
**FEEDPOINT A3H  
LIGHTING STANDARDS AND BASES**

NO.	STATION	LT.	RT.	LOCATION	TYPE	WATT
35	17 + 30		X	RAMP E	9-40	250
36	33 + 25		X	RAMP D	9-40	250

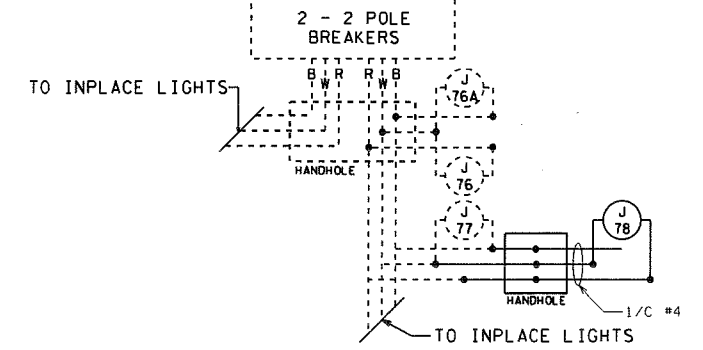


DASHED LINES DENOTE INPLACE ITEMS  
 W DENOTES NEUTRAL CONDUCTOR  
 B AND R DENOTE CURRENT CARRYING CONDUCTORS  
 FD. PT. A3L  
 240/480 VOLT

DASHED LINES DENOTE INPLACE ITEMS  
 W DENOTES NEUTRAL CONDUCTOR  
 B AND R DENOTE CURRENT CARRYING CONDUCTORS  
 FD. PT. A3H  
 240/480 VOLT



DASHED LINES DENOTE INPLACE ITEMS  
 W DENOTES NEUTRAL CONDUCTOR  
 B AND R DENOTE CURRENT CARRYING CONDUCTORS  
 FD. PT. A3J  
 240/480 VOLT



**FEEDPOINT A3J  
LIGHTING STANDARDS AND BASES**

NO.	STATION	LT.	RT.	LOCATION	TYPE	WATT	
(1)	77	INPLACE		X	94WB TO 52SB (W61B)	9-40	250
(1)	78	236 + 45	X		T.H. 52 SB	6B-40	250

(1) SEE TABLE "ACTUAL POLE HEIGHTS", DETAIL SHEET L2.

**FD. PT. A3H, A3J, A3L, A3N**

BY	DATE	REVISIONS	FEEDPOINT: A3H, A3J, A3L, A3N	LOCATION: T.H. 52	<b>LIGHTING PLAN</b>
			METER ADDRESS: TBD		
DRAWN BY: PB			CERTIFIED BY: <i>Michael P. Dubinsky</i>		STATE PROJ. NO. 6244-030 (T.H. 52) SHEET NO. L17 OF L24 SHEETS
CKD BY: GB			LIC. NO. 19863 DATE: 7/14/2010		
DATE:					