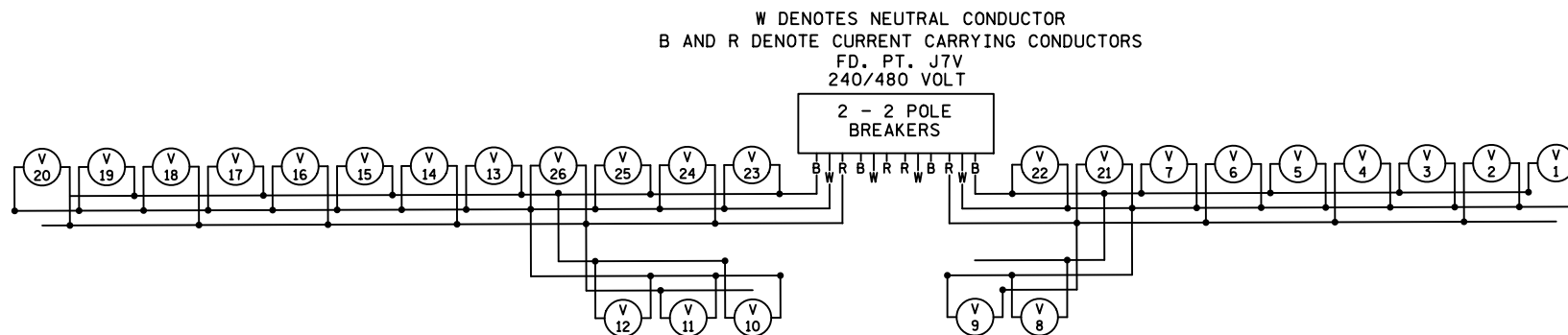
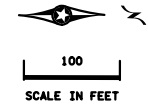


# LEGEND

- LIGHTING UNIT
- INPLACE LIGHT POLE - F&I L.E.D LUMINAIRE
- INPLACE LIGHTING UNIT
- INPLACE TYPE L - F&I LED LUMINAIRE
- PERMANENT GROUND ROD (25 OHMS OR LESS)
- DIRECT BURIED 4 CONDUCTOR NO. 4
- PAD MOUNTED FD. PT. CABINET L1 EQUIPMENT PAD B
- HANDHOLE
- 3" PVC (UNLESS OTHERWISE NOTED)
- INPLACE HANDHOLE
- INPLACE PAD MOUNTED FD. PT. CABINET
- INPLACE CONDUIT
- INPLACE DIRECT BURIED 4 CONDUCTOR NO. 4



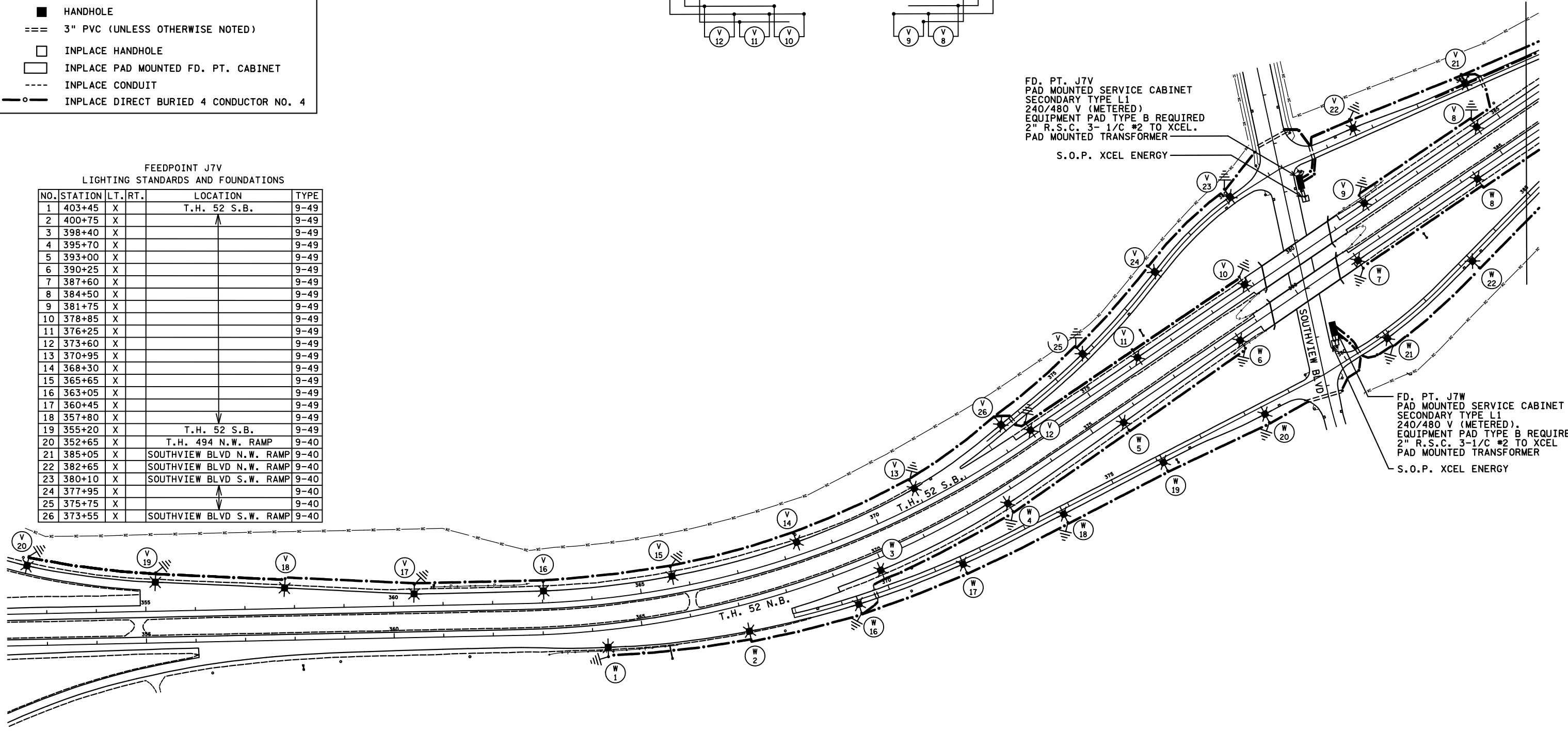
PLOTTED/REVISED: 9/16/2014

FD. PT. J7V  
 PAD MOUNTED SERVICE CABINET  
 SECONDARY TYPE L1  
 240/480 V (METERED)  
 EQUIPMENT PAD TYPE B REQUIRED  
 2" R.S.C. 3-1/C #2 TO XCEL.  
 PAD MOUNTED TRANSFORMER  
 S.O.P. XCEL ENERGY

MATCHLINE "A"

### FEEDPOINT J7V LIGHTING STANDARDS AND FOUNDATIONS

NO.	STATION	LT.	RT.	LOCATION	TYPE
1	403+45	X		T.H. 52 S.B.	9-49
2	400+75	X			9-49
3	398+40	X			9-49
4	395+70	X			9-49
5	393+00	X			9-49
6	390+25	X			9-49
7	387+60	X			9-49
8	384+50	X			9-49
9	381+75	X			9-49
10	378+85	X			9-49
11	376+25	X			9-49
12	373+60	X			9-49
13	370+95	X			9-49
14	368+30	X			9-49
15	365+65	X			9-49
16	363+05	X			9-49
17	360+45	X			9-49
18	357+80	X			9-49
19	355+20	X		T.H. 52 S.B.	9-49
20	352+65	X		T.H. 494 N.W. RAMP	9-40
21	385+05	X		SOUTHVIEW BLVD N.W. RAMP	9-40
22	382+65	X		SOUTHVIEW BLVD N.W. RAMP	9-40
23	380+10	X		SOUTHVIEW BLVD S.W. RAMP	9-40
24	377+95	X			9-40
25	375+75	X			9-40
26	373+55	X		SOUTHVIEW BLVD S.W. RAMP	9-40



FD. PT. J7W  
 PAD MOUNTED SERVICE CABINET  
 SECONDARY TYPE L1  
 240/480 V (METERED)  
 EQUIPMENT PAD TYPE B REQUIRE  
 2" R.S.C. 3-1/C #2 TO XCEL.  
 PAD MOUNTED TRANSFORMER  
 S.O.P. XCEL ENERGY

J7V METER ADDRESS: 2450 SOUTHVIEW AVE SOUTH ST. PAUL 55075  
 J7W METER ADDRESS: 2300 SOUTHVIEW AVE SOUTH ST. PAUL 55075

FEED POINT J7V, J7W

FEEDPOINT: J7V - J7W LOCATION: TH52 AT CSAH 14/ SOUTHVIEW AVE.

## LIGHTING PLAN

BY	DATE	REVISIONS

CERTIFIED BY *Michael P. Libensky* LIC. NO. 19863 DATE: 9/16/2014  
LICENSED PROFESSIONAL ENGINEER

STATE PROJ.NO. 1928-60 (T.H. 52) SHEET NO. 16 OF 31 SHEETS

DRAWN BY: DC CKD BY: GB DATE: 8/2014

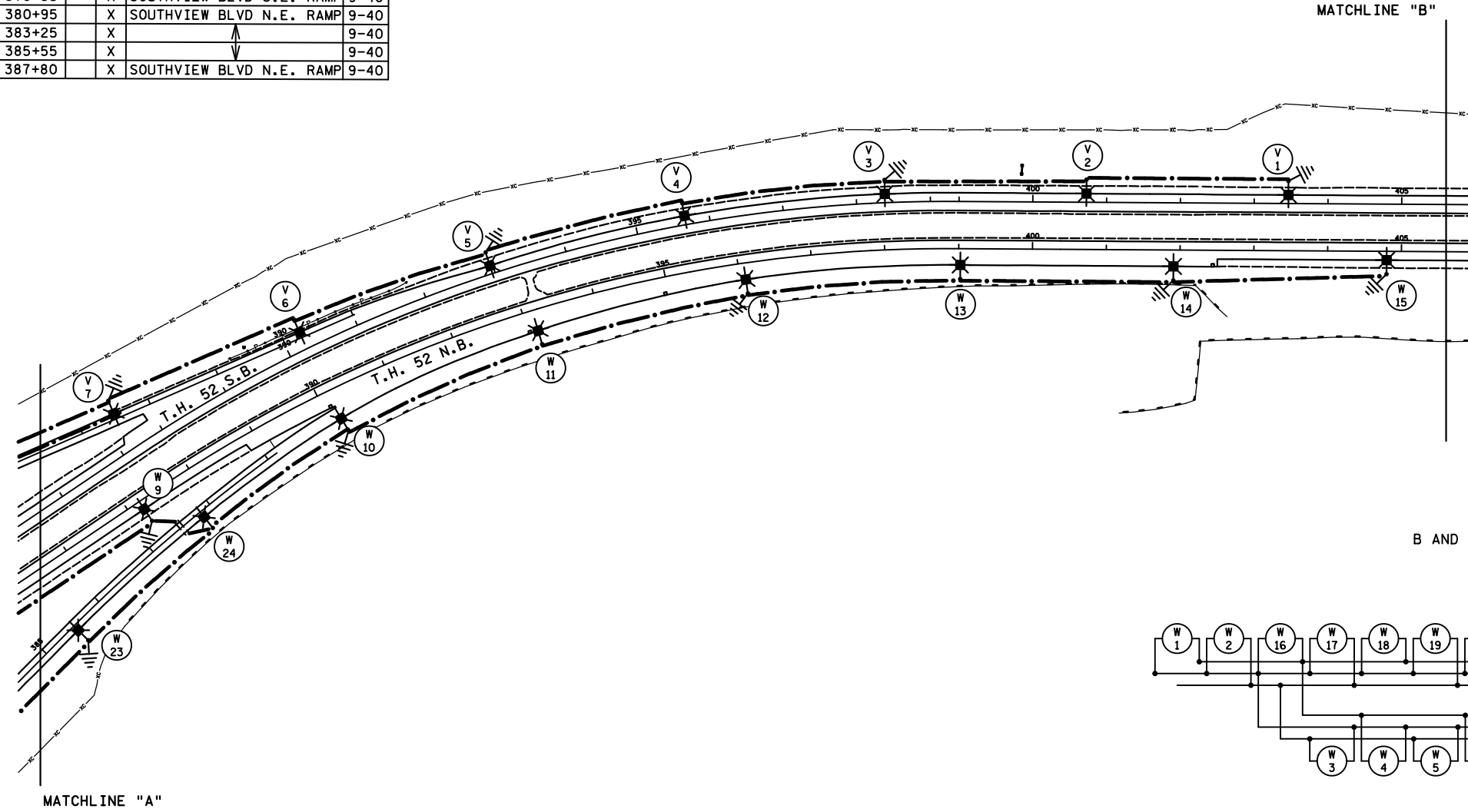
DISTRICT #: METRO  
 I/PLOT NAME: 1928-60.L1.stm16  
 PATH & FILENAME: IP\_PWP-d\5884\2\1928-60.L1.dgn

SEE LEGEND SHEET 16

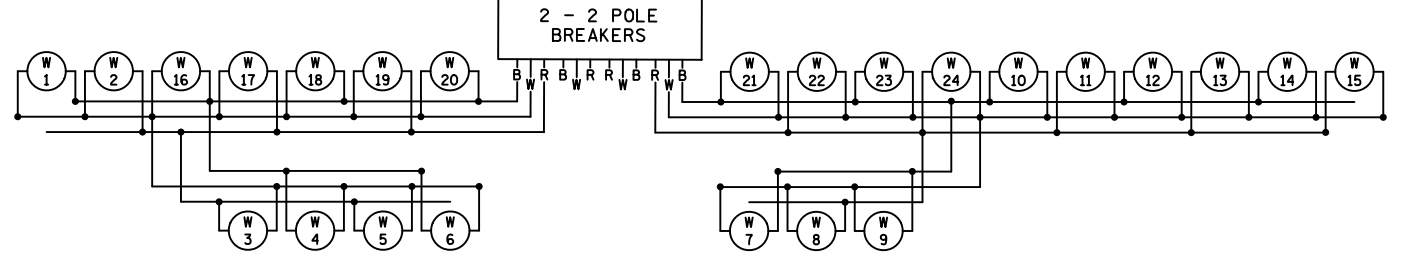


FEEDPOINT J7W  
LIGHTING STANDARDS AND FOUNDATIONS

NO.	STATION	LT.	RT.	LOCATION	TYPE
1	364+25		X	T.H. 52 N.B.	9-49
2	367+05		X		9-49
3	369+95		X		9-49
4	372+80		X		9-49
5	375+65		X		9-49
6	378+50		X		9-49
7	381+40		X		9-49
8	384+30		X		9-49
9	387+20		X		9-49
10	390+15		X		9-49
11	393+15		X		9-49
12	396+10		X		9-49
13	399+00		X		9-49
14	401+90		X		9-49
15	404+80		X	T.H. 52 N.B.	9-49
16	369+30	X		SOUTHVIEW BLVD S.E. RAMP	9-40
17	371+55	X			9-40
18	373+85	X			9-40
19	376+10	X			9-40
20	378+35	X		SOUTHVIEW BLVD S.E. RAMP	9-40
21	380+95	X		SOUTHVIEW BLVD N.E. RAMP	9-40
22	383+25	X			9-40
23	385+55	X			9-40
24	387+80	X		SOUTHVIEW BLVD N.E. RAMP	9-40



W DENOTES NEUTRAL CONDUCTOR  
B AND R DENOTE CURRENT CARRYING CONDUCTORS  
FD. PT. J7W  
240/480 VOLT



J7V METER ADDRESS: 2450 SOUTHVIEW AVE SOUTH ST. PAUL 55075  
J7W METER ADDRESS: 2300 SOUTHVIEW AVE SOUTH ST. PAUL 55075

FEED POINT J7V, J7W

BY	DATE	REVISIONS	FEEDPOINT: J7V - J7W LOCATION: TH52 AT CSAH 14/ SOUTHVIEW AVE.	LIGHTING PLAN
DC	8/2014			
DRAWN BY: DC CKD BY: GB DATE: 8/2014			CERTIFIED BY <i>Michael P. Libensky</i> LIC. NO. 19863 DATE: 9/16/2014	STATE PROJ. NO. 1928-60 (T.H. 52) SHEET NO. 17 OF 31 SHEETS

DISTRICT #: METRO  
 PLOT NAME: 1928-60.L1.shd  
 PATH & FILENAME: IP\_PWP-d\5884\2\1928-60.L1.loadn  
 PLOTTED/REVISED: 9/16/2014