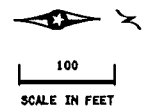


# LEGEND

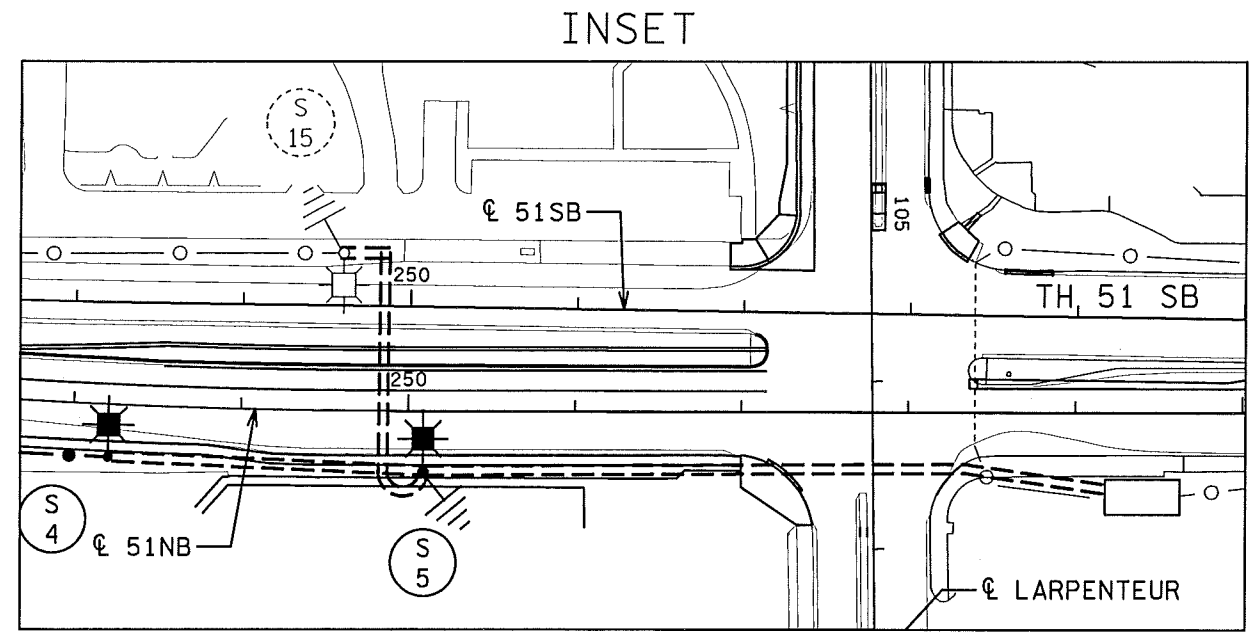
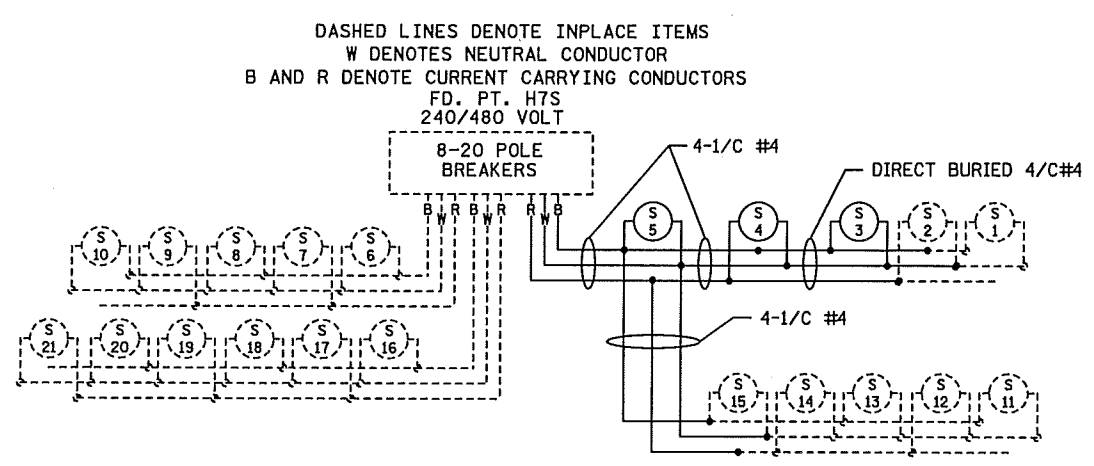
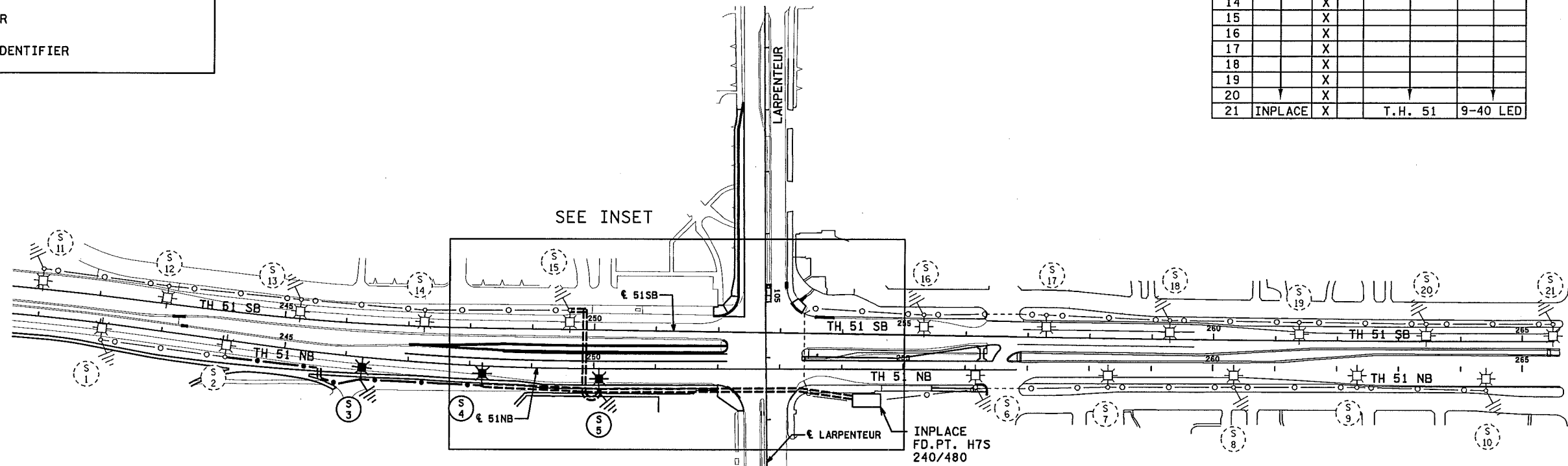
- F&I LIGHT FOUNDATION AND STANDARD INSTALL SALVAGED LUMINAIRE
- INPLACE LIGHTING UNIT
- INPLACE PAD MOUNTED FD. PT. CABINET 240/480 VOLT
- DIRECT BURIED CABLE 4 CONDUCTOR NO. 4
- INPLACE DIRECT BURIED CABLE
- PERMANENT GROUND ROD (25 OHMS OR LESS)
- 2" PVC DIRECTIONAL BORED (UNLESS NOTED OTHERWISE)
- INPLACE CONDUIT
- LIGHTING UNIT IDENTIFIER
- INPLACE LIGHTING UNIT IDENTIFIER

FEEDPOINT H7S  
LIGHTING UNIT LOCATION AND TYPE

NO.	STATION	LT.	RT.	LOCATION	TYPE
1	INPLACE	X		T.H. 51	9-40 LED
2	INPLACE	X		T.H. 51	
3	246+27	X	X	T.H. 51 N.B.	
4	248+21	X	X	T.H. 51 N.B.	
5	250+09	X	X	T.H. 51 N.B.	
6	INPLACE	X		T.H. 51	
7		X			
8		X			
9		X			
10		X			
11		X			
12		X			
13		X			
14		X			
15		X			
16		X			
17		X			
18		X			
19		X			
20		X			
21	INPLACE	X		T.H. 51	9-40 LED



PLOTTED/REVISED: 12/13/2016



S.A.P. 062-630-065

LIGHTING SYSTEM

BY	DATE	REVISIONS	FEEDPOINT: H7S    LOCATION: TH 51 AT LARPEUR AVE METER ADDRESS: 1660 SNELLING AVE E.	<b>MN/DOT LIGHTING PLAN</b>
DRAWN BY: SJK    CKD BY: PB			CERTIFIED BY: <i>Michael P. Gubinsky</i> LIC. NO. 19863    DATE: 12/13/2016	STATE PROJ. NO. 6216-127 (T.H. 51) SHEET NO. SL4 OF SL7 SHEETS

DISTRICT: METRO  
PLOT NAME: H7S Layout sheet  
PATH & FILENAME: IP\_PWP-d1813662v6216-127-lit.lodgn

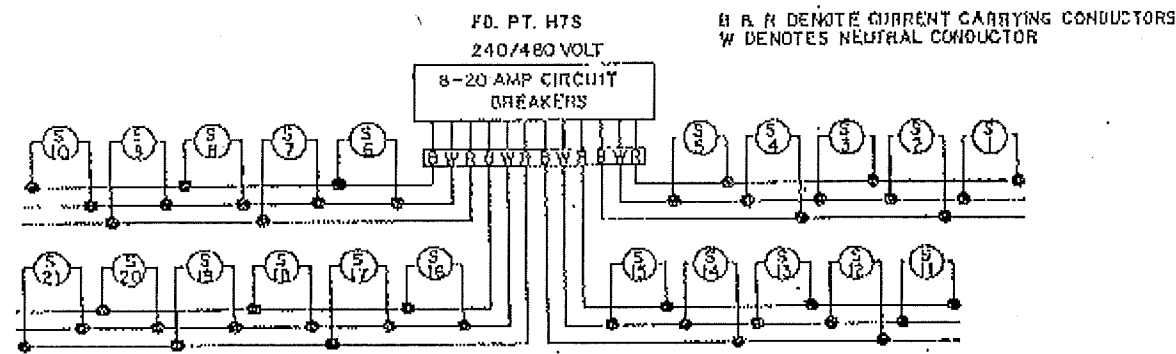
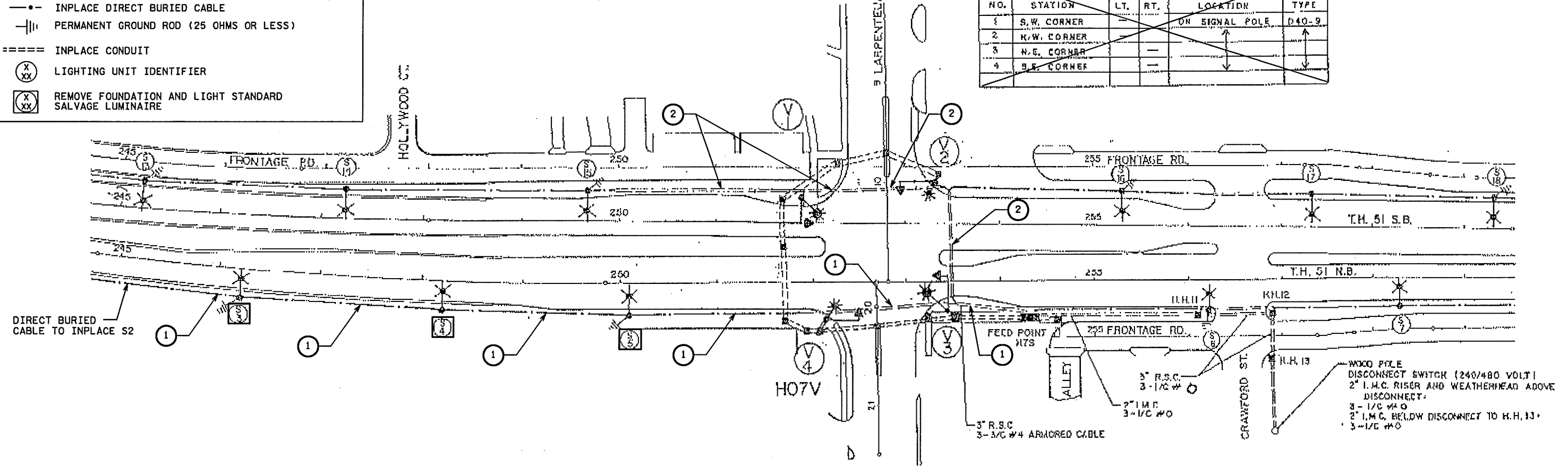
**LEGEND**

- INPLACE LIGHTING UNIT
- INPLACE PAD MOUNTED FD. PT. CABINET 240/480 VOLT
- INPLACE HANDHOLE
- INPLACE DIRECT BURIED CABLE
- PERMANENT GROUND ROD (25 OHMS OR LESS)
- INPLACE CONDUIT
- LIGHTING UNIT IDENTIFIER
- REMOVE FOUNDATION AND LIGHT STANDARD SALVAGE LUMINAIRE

NOT TO SCALE

**FEED POINT H7V**

LIGHTING STANDARDS AND BASES					
NO.	STATION	LT.	RT.	LOCATION	TYPE
1	S.W. CORNER			ON SIGNAL POLE	D40-9
2	N.W. CORNER				
3	N.E. CORNER				
4	S.E. CORNER				



**FEED POINT H7S**

LIGHTING STANDARDS AND BASES											
NO.	STATION	LT.	RT.	LOCATION	TYPE	NO.	STATION	LT.	RT.	LOCATION	TYPE
1	N.B. 242+05			T.H. 51	9-40	11	S.B. 241+05			T.H. 51	9-40
2	N.B. 244+10					12	S.B. 243+10				
3	N.B. 246+20					13	S.B. 245+20				
4	N.B. 248+20					14	S.B. 247+25				
5	N.B. 250+10					15	S.B. 249+80				
6	N.B. 256+20					16	S.B. 255+30				
7	N.B. 258+30					17	S.B. 257+30				
8	N.B. 260+35					18	S.B. 259+30				
9	N.B. 262+35					19	S.B. 261+35				
10	N.B. 264+40			T.H. 51	9-40	20	S.B. 263+40				
						21	S.B. 265+50			T.H. 51	9-40

ALL LUMINAIRES SHALL BE 200 WATT HIGH PRESSURE SODIUM

- NOTES:**
- ① REMOVE CABLE FROM FD.PT. TO S2
  - ② REMOVE CABLE FROM FD.PT. TO S15

S.A.P. 062-630-065

LIGHTING SYSTEM

BY	DATE	REVISIONS

DRAWN BY: SJK CKD BY: PB

CERTIFIED BY *Michael P. Lubinsky* LIC. NO. 19863 DATE: 12/13/2016

**MN/DOT REMOVAL PLAN**

STATE PROJ. NO. 6216-127 (T.H. 51) SHEET NO. SL3 OF SL7 SHEETS

PLOTTED/REVISED: 12/13/2016

DISTRICT #: METRO  
PLOT NAME: H7S Removal sheet  
PATH & FILENAME: IP\_PWP-d\B13662\6216-127-ITL.dgn