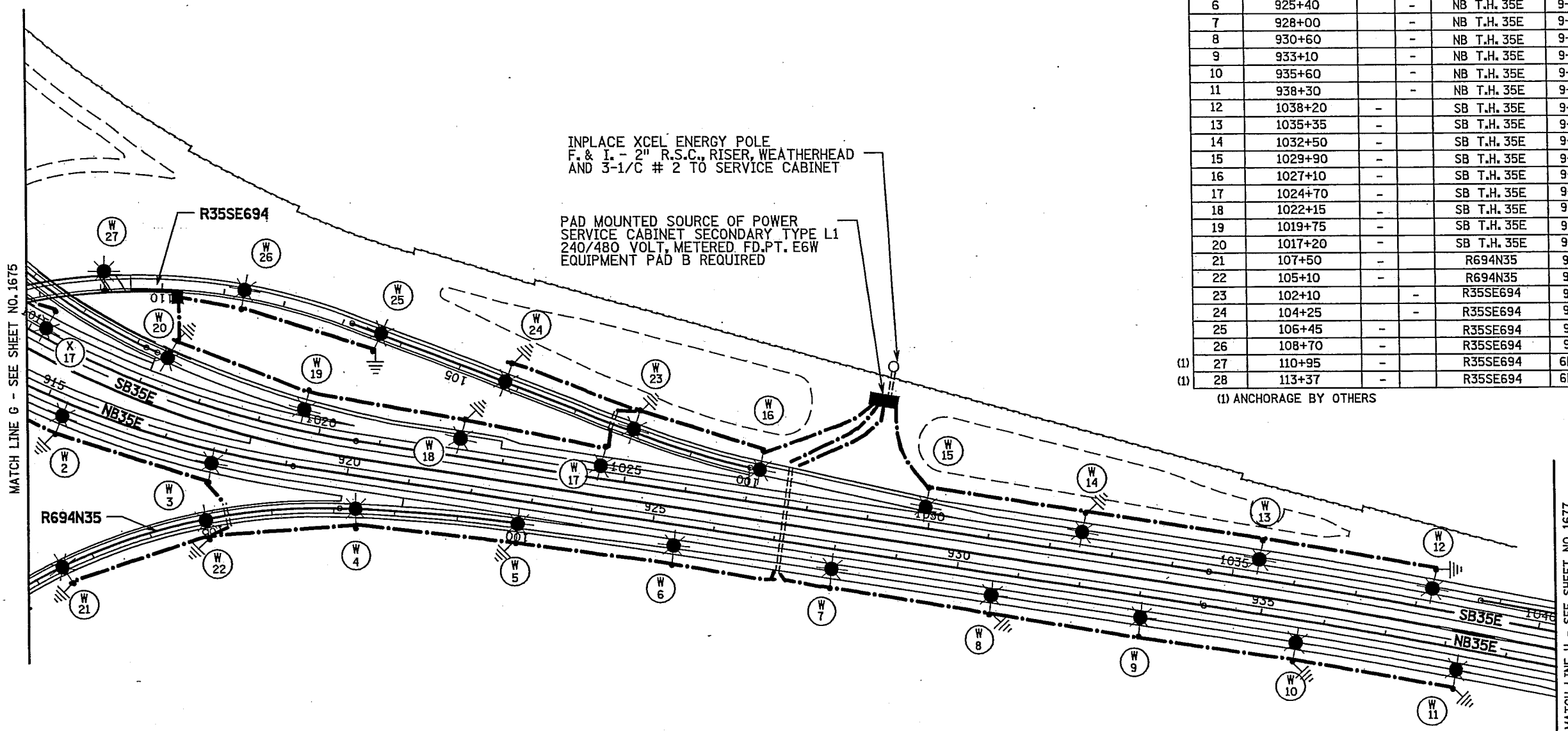


SEE SHEET 1670 FOR LEGEND

FEEDPOINT E6W

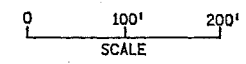
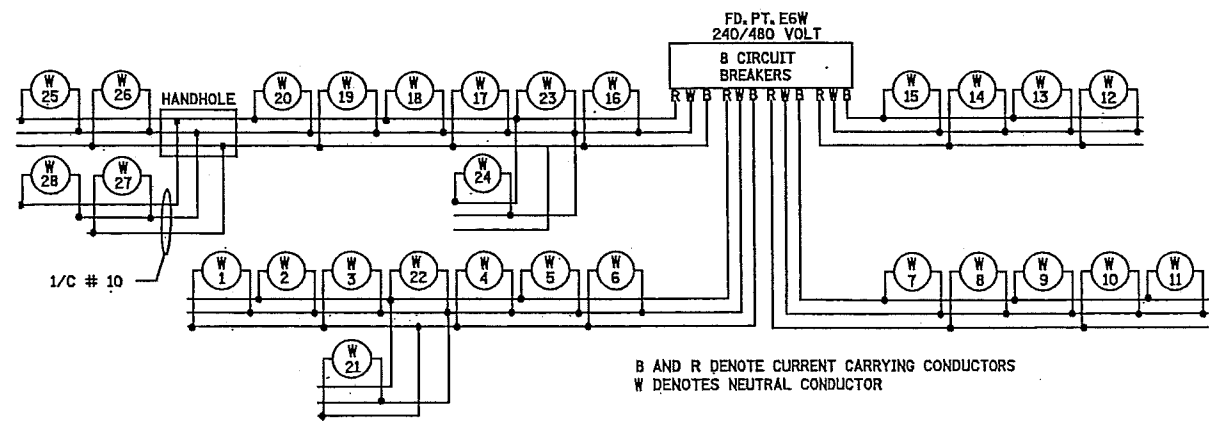
LIGHTING STANDARDS AND BASES					
NO.	STATION	LT.	RT.	LOCATION	TYPE WATTAGE
1	913+30	-	-	NB T.H. 35E	9-49 400
2	915+60	-	-	NB T.H. 35E	9-49 400
3	917+90	-	-	NB T.H. 35E	9-49 400
4	102+65	-	-	NB T.H. 35E	9-49 400
5	100+00	-	-	NB T.H. 35E	9-49 400
6	925+40	-	-	NB T.H. 35E	9-49 400
7	928+00	-	-	NB T.H. 35E	9-49 400
8	930+60	-	-	NB T.H. 35E	9-49 400
9	933+10	-	-	NB T.H. 35E	9-49 400
10	935+60	-	-	NB T.H. 35E	9-49 400
11	938+30	-	-	NB T.H. 35E	9-49 400
12	1038+20	-	-	SB T.H. 35E	9-49 400
13	1035+35	-	-	SB T.H. 35E	9-49 400
14	1032+50	-	-	SB T.H. 35E	9-49 400
15	1029+90	-	-	SB T.H. 35E	9-49 400
16	1027+10	-	-	SB T.H. 35E	9-49 400
17	1024+70	-	-	SB T.H. 35E	9-49 400
18	1022+15	-	-	SB T.H. 35E	9-49 400
19	1019+75	-	-	SB T.H. 35E	9-49 400
20	1017+20	-	-	SB T.H. 35E	9-49 400
21	107+50	-	-	R694N35	9-40 250
22	105+10	-	-	R694N35	9-40 250
23	102+10	-	-	R35SE694	9-40 250
24	104+25	-	-	R35SE694	9-40 250
25	106+45	-	-	R35SE694	9-40 250
26	108+70	-	-	R35SE694	9-40 250
(1) 27	110+95	-	-	R35SE694	6B-40 250
(1) 28	113+37	-	-	R35SE694	6B-40 250

(1) ANCHORAGE BY OTHERS



MATCH LINE G - SEE SHEET NO. 1675

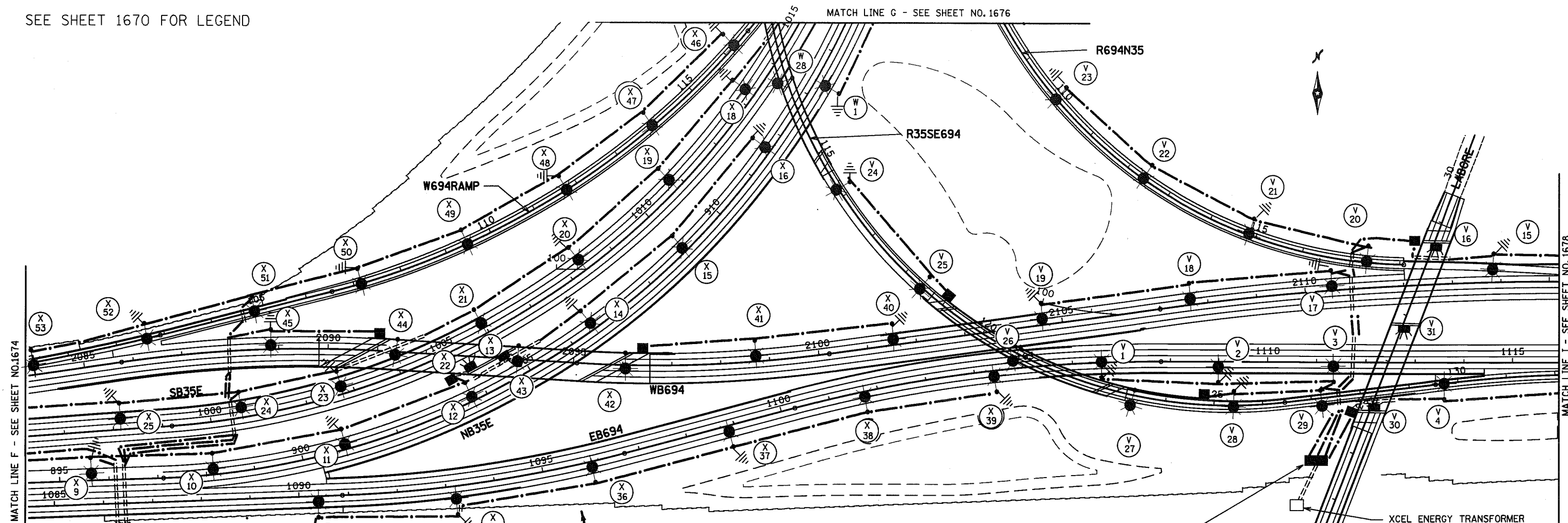
MATCH LINE H - SEE SHEET NO. 1677



LIGHTING PLAN

SEE SHEET 1670 FOR LEGEND

MATCH LINE G - SEE SHEET NO. 1676



MATCH LINE F - SEE SHEET NO. 1674

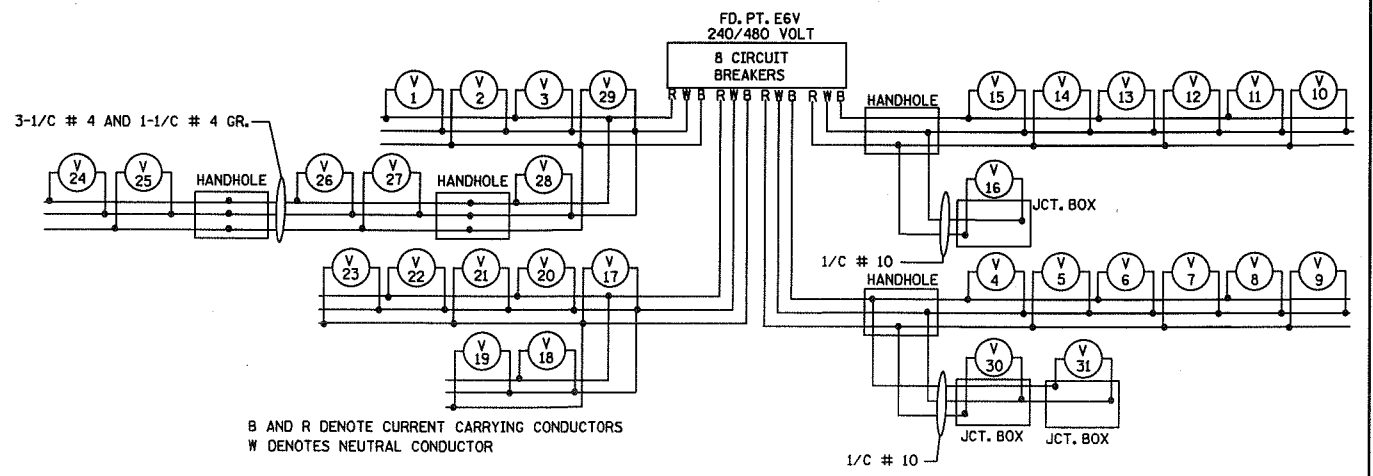
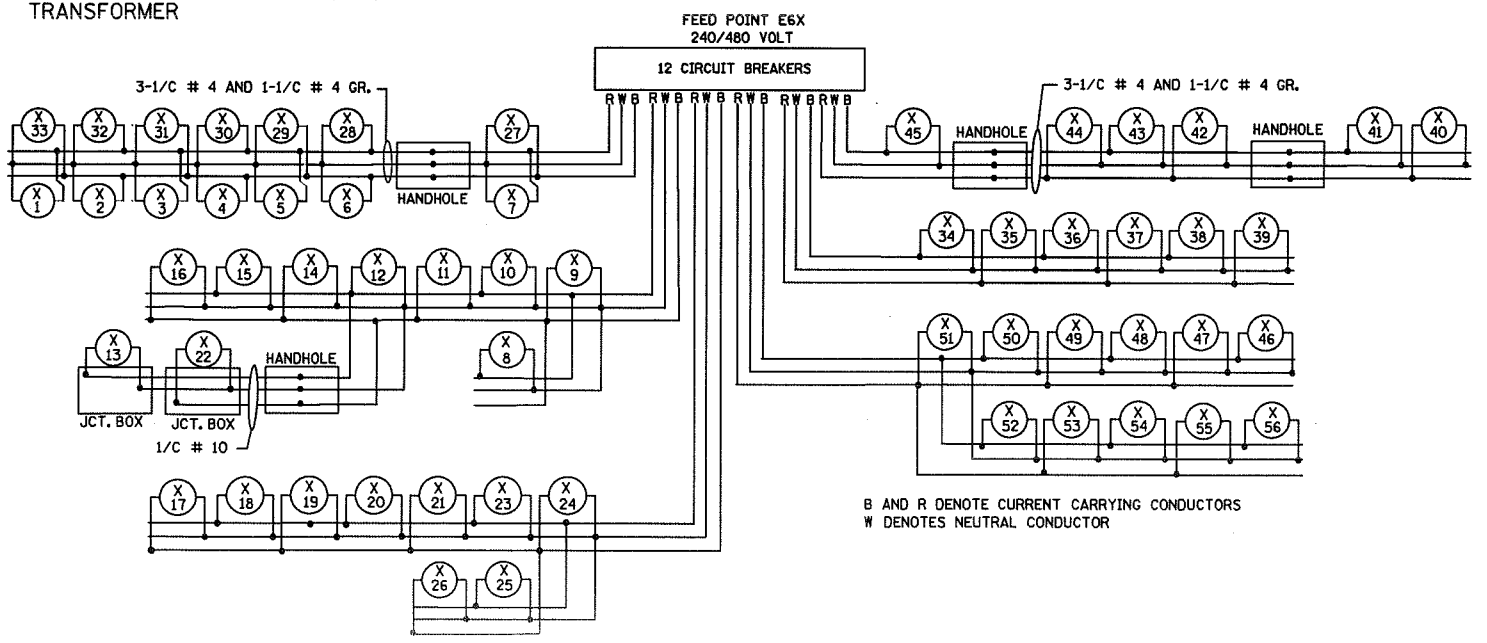
MATCH LINE I - SEE SHEET NO. 1678

3 TRENCHES +/- 2 FT APART

PAD MOUNTED SOURCE OF POWER
SERVICE CABINET SECONDARY TYPE L2
240/480 VOLT, METERED FD.PT. E6X
EQUIPMENT PAD B REQUIRED
2" R.S.C. AND 3-1/C # 3/0 TO
TRANSFORMER

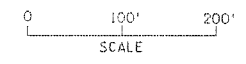
INPLACE XCEL ENERGY PAD
MOUNTED TRANSFORMER

PAD MOUNTED SOURCE OF POWER
SERVICE CABINET SECONDARY TYPE L1
2" R.S.C. AND 3-1/ # 2 TO TRANSFORMER
240/480 VOLT, METERED FD.PT. E6V
COMBINED EQUIPMENT PAD FOR LIGHTING AND TMC
SEE PAD DETAIL ON SHEET NO. 1669



B AND R DENOTE CURRENT CARRYING CONDUCTORS
W DENOTES NEUTRAL CONDUCTOR

B AND R DENOTE CURRENT CARRYING CONDUCTORS
W DENOTES NEUTRAL CONDUCTOR



AS-BUILT 12/2010

LIGHTING PLAN