

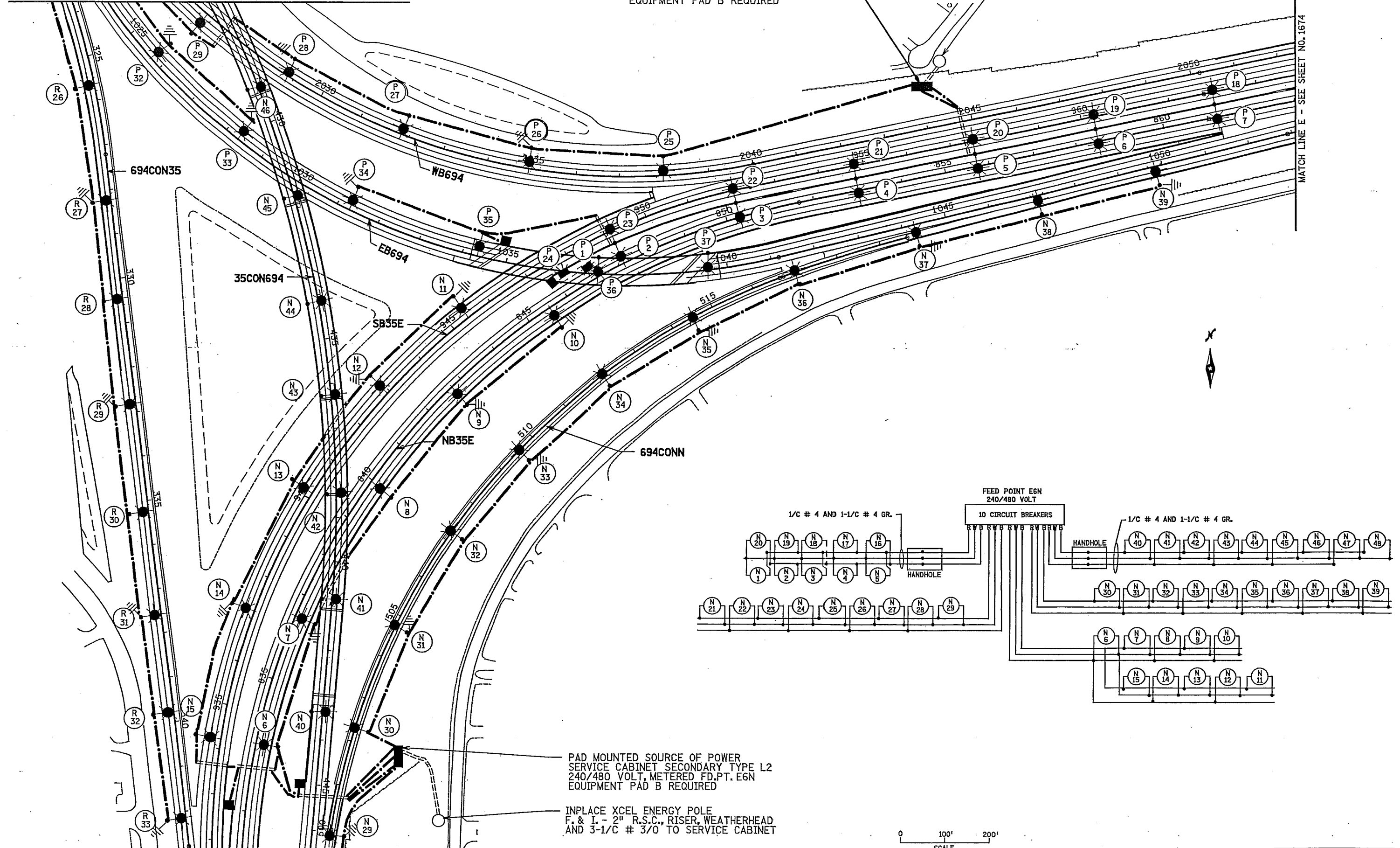
SEE SHEET 1670 FOR LEGEND

PAD MOUNTED SOURCE OF POWER  
SERVICE CABINET SECONDARY TYPE L1  
240/480 VOLT, METERED FD.PT. E6P  
EQUIPMENT PAD B REQUIRED

INPLACE XCEL ENERGY POLE  
F. & I. - 2" R.S.C., RISER, WEATHERHEAD  
AND 3-1/C # 2 TO SERVICE CABINET

MATCH LINE D - SEE SHEET NO. 1679

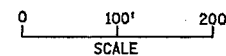
MATCH LINE E - SEE SHEET NO. 1674



MATCH LINE C - SEE SHEET NO. 1671

PAD MOUNTED SOURCE OF POWER  
SERVICE CABINET SECONDARY TYPE L2  
240/480 VOLT, METERED FD.PT. E6N  
EQUIPMENT PAD B REQUIRED

INPLACE XCEL ENERGY POLE  
F. & I. - 2" R.S.C., RISER, WEATHERHEAD  
AND 3-1/C # 3/0 TO SERVICE CABINET

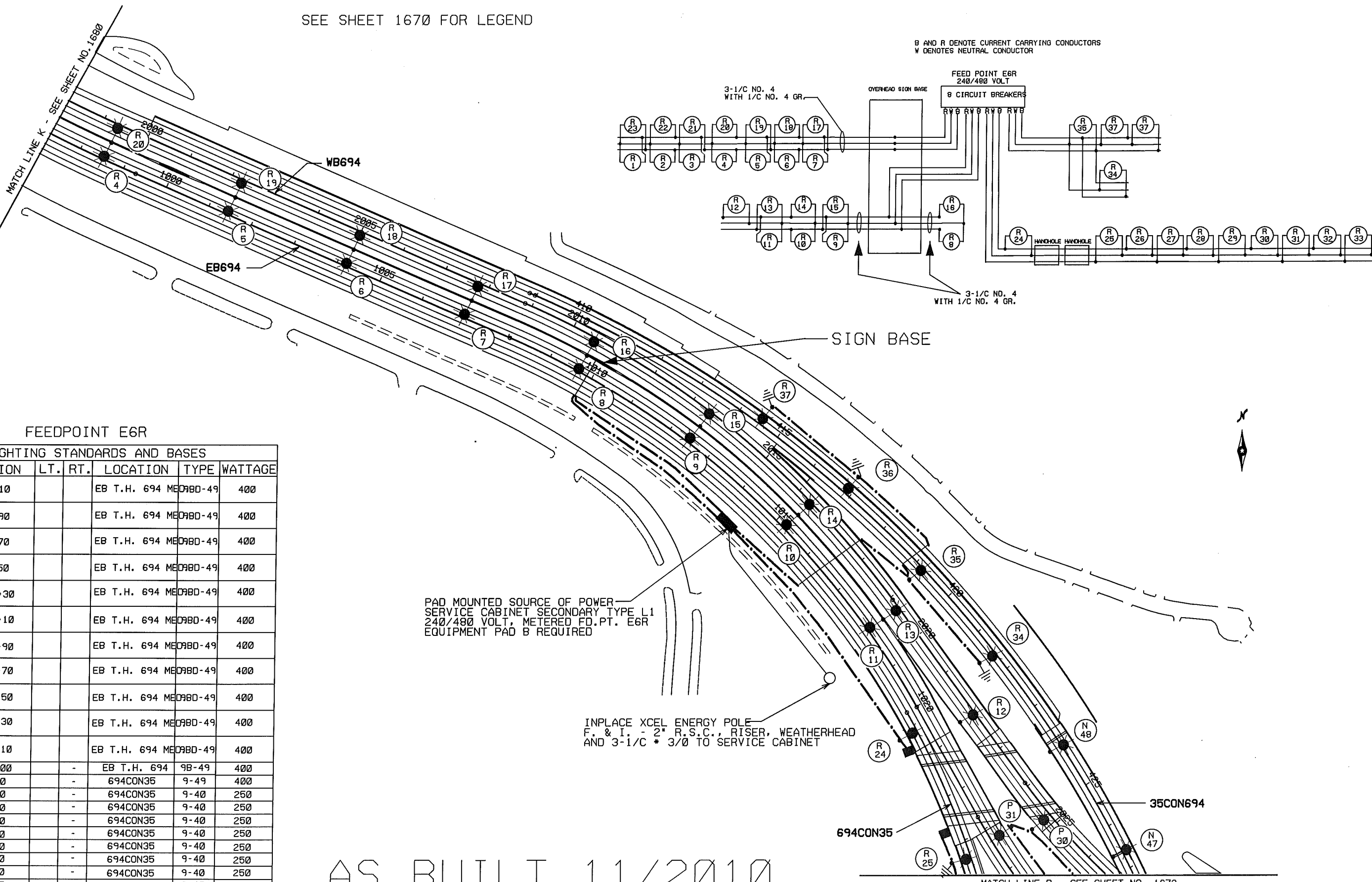


**LIGHTING PLAN**

CERTIFIED BY *John A. Biernick* LIC. NO. 23084  
LICENSED PROFESSIONAL ENGINEER

SEE SHEET 1670 FOR LEGEND

B AND R DENOTE CURRENT CARRYING CONDUCTORS  
W DENOTES NEUTRAL CONDUCTOR



FEEDPOINT E6R

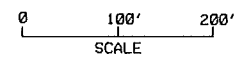
LIGHTING STANDARDS AND BASES

NO.	STATION	LT.	RT.	LOCATION	TYPE	WATTAGE
(1) 1	990+10			EB T.H. 694 MED9BD-49	400	400
(1) 2	992+90			EB T.H. 694 MED9BD-49	400	400
(1) 3	995+70			EB T.H. 694 MED9BD-49	400	400
(1) 4	998+50			EB T.H. 694 MED9BD-49	400	400
(1) 5	1001+30			EB T.H. 694 MED9BD-49	400	400
(1) 6	1004+10			EB T.H. 694 MED9BD-49	400	400
(1) 7	1006+90			EB T.H. 694 MED9BD-49	400	400
(1) 8	1009+70			EB T.H. 694 MED9BD-49	400	400
(1) 9	1012+50			EB T.H. 694 MED9BD-49	400	400
(1) 10	1015+30			EB T.H. 694 MED9BD-49	400	400
(1) 11	1018+10			EB T.H. 694 MED9BD-49	400	400
(1) 12	2022+00	-	-	EB T.H. 694 9B-49	400	400
24	320+70	-	-	694CON35	9-49	400
25	323+30	-	-	694CON35	9-40	250
26	325+70	-	-	694CON35	9-40	250
27	328+10	-	-	694CON35	9-40	250
28	330+40	-	-	694CON35	9-40	250
29	332+80	-	-	694CON35	9-40	250
30	335+10	-	-	694CON35	9-40	250
31	337+50	-	-	694CON35	9-40	250
32	339+80	-	-	694CON35	9-40	250
33	342+15	-	-	694CON35	9-40	250
34	421+65	-	-	35CON694	9-40	250
35	419+25	-	-	35CON694	9-40	250
36	416+85	-	-	35CON694	9-40	250
37	414+45	-	-	35CON694	9-40	250

PAD MOUNTED SOURCE OF POWER  
SERVICE CABINET SECONDARY TYPE L1  
240/480 VOLT, METERED FD.PT. E6R  
EQUIPMENT PAD B REQUIRED

INPLACE XCEL ENERGY POLE  
F. & I. - 2" R.S.C., RISER, WEATHERHEAD  
AND 3-1/C \* 3/0 TO SERVICE CABINET

AS BUILT 11/2010



MATCH LINE D - SEE SHEET NO. 1672

LIGHTING PLAN

(1) ANCHORAGE BY OTHERS

CERTIFIED BY \_\_\_\_\_ LICENSED PROFESSIONAL ENGINEER

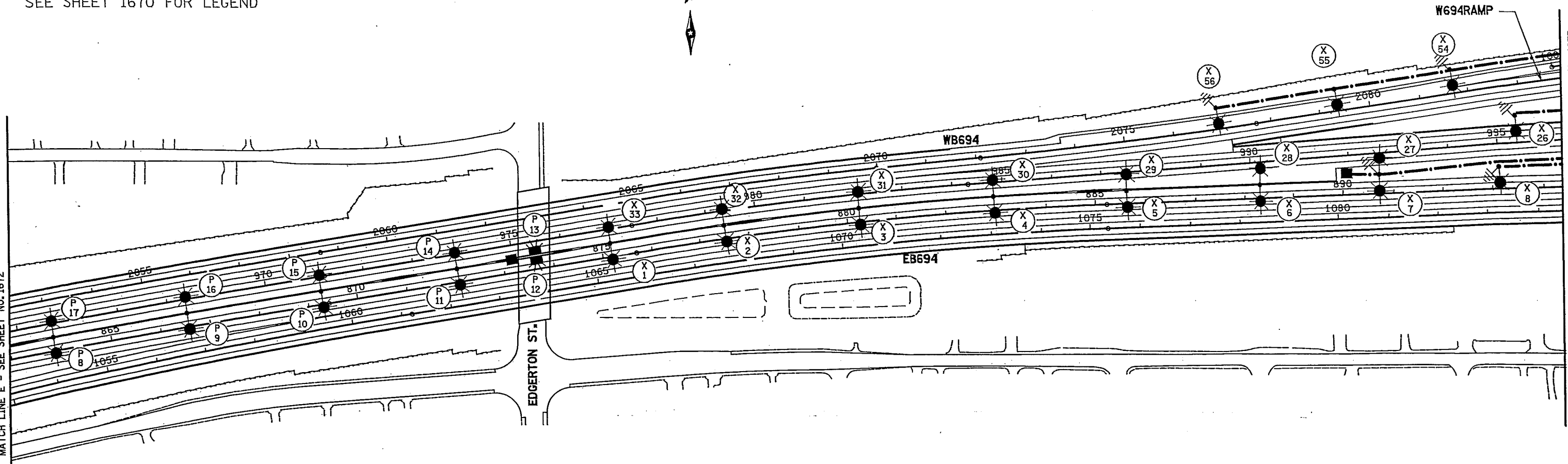
LIC. NO. 23084

STATE PROJ. NO 6280-304 (I-35E & I-694) SHEET NO. 1679 OF 1992 SHEETS

SEE SHEET 1670 FOR LEGEND



MATCH LINE E - SEE SHEET NO. 1672



MATCH LINE F - SEE SHEET NO. 1675

FEEDPOINT E6X

LIGHTING STANDARDS AND BASES

	NO.	STATION	LT.	RT.	LOCATION	TYPE	WATTAGE
(1)	1	875+15			NB T.H. 35E MED.	98D-49	400
	33						
(1)	2	877+55			NB T.H. 35E MED.	98D-49	400
	32						
(1)	3	880+15			NB T.H. 35E MED.	98D-49	400
	31						
(1)	4	882+95			NB T.H. 35E MED.	98D-49	400
	30						
(1)	5	885+65			NB T.H. 35E MED.	98D-49	400
	29						
(1)	6	888+35			NB T.H. 35E MED.	98D-49	400
	28						
	7	890+75			NB T.H. 35E MED.	9D-49	400
	27						
	8	893+20	-		NB T.H. 35E	9-49	400
	9	895+60	-		NB T.H. 35E	9-49	400
	10	898+15	-		NB T.H. 35E	9-49	400
	11	900+80	-		NB T.H. 35E	9-49	400
	12	903+70	-		NB T.H. 35E	9-49	400
	13	904+65	-		NB T.H. 35E	L	250
	14	906+50	-		NB T.H. 35E	9-49	400
	15	909+05	-		NB T.H. 35E	9-49	400
	16	911+60	-		NB T.H. 35E	9-49	400
	17	1015+40	-		SB T.H. 35E	9-49	400
	18	1013+30	-		SB T.H. 35E	9-49	400
	19	1010+85	-		SB T.H. 35E	9-49	400
	20	1008+35	-		SB T.H. 35E	9-49	400
	21	1005+95	-		SB T.H. 35E	9-49	400

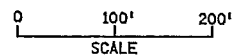
(1) ANCHORAGE BY OTHERS

FEEDPOINT E6X

LIGHTING STANDARDS AND BASES

	NO.	STATION	LT.	RT.	LOCATION	TYPE	WATTAGE
	22	1005+60			SB T.H. 35E	L	250
	23	1002+90	-		SB T.H. 35E	9-49	400
	24	1000+55	-		SB T.H. 35E	9-49	400
	25	998+25	-		SB T.H. 35E	9-49	400
	26	995+40	-		SB T.H. 35E	9-49	400
	34	1090+50			EB T.H. 694	9-49	400
	35	1093+30			EB T.H. 694	9-49	400
	36	1096+05			EB T.H. 694	9-49	400
	37	1098+90			EB T.H. 694	9-49	400
	38	1101+70			EB T.H. 694	9-49	400
	39	1104+50			EB T.H. 694	9-49	400
	40	2101+55	-		WB T.H. 694	9-49	400
	41	2098+75	-		WB T.H. 694	9-49	400
(1)	42	2096+05	-		WB T.H. 694	6B-40	250
(1)	43	2093+80	-		WB T.H. 694	6B-40	250
(1)	44	2091+40	-		WB T.H. 694	6B-40	250
	45	2088+80	-		WB T.H. 694	9-49	400
	46	116+25	-		W694RAMP	9-40	250
	47	113+95	-		W694RAMP	9-40	250
	48	111+70	-		W694RAMP	9-40	250
	49	109+45	-		W694RAMP	9-40	250
	50	107+15	-		W694RAMP	9-40	250
	51	104+90	-		W694RAMP	9-40	250
	52	102+60	-		W694RAMP	9-40	250
	53	100+30	-		W694RAMP	9-40	250
	54	2081+65	-		WB T.H. 694	9-40	250
	55	2079+30	-		WB T.H. 694	9-40	250
	56	2076+90	-		WB T.H. 694	9-40	250

(1) ANCHORAGE BY OTHERS



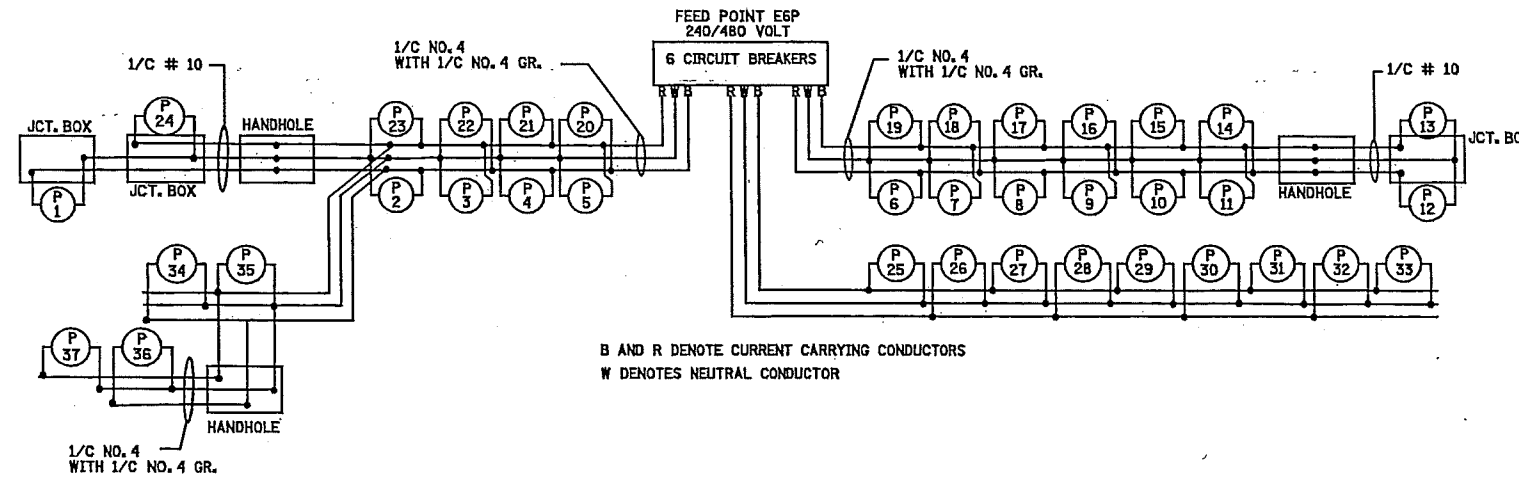
CERTIFIED BY *John A. Bevilacqua*

LIC. NO. 23084

State Proj. No. 6280-304 (I-35E & I-694) Sheet No. 1674 of 1992 Sheets

LIGHTING PLAN

SEE SHEET 1670 FOR LEGEND



FEEDPOINT E6P

LIGHTING STANDARDS AND BASES					
NO.	STATION	LT.	RT.	LOCATION	TYPE WATTAGE
1	845+80			NB T.H. 35E	L 250
(1) 2	847+60			NB T.H. 35E MED.	9BD-49 400
23					
(1) 3	850+30			NB T.H. 35E MED.	9BD-49 400
(1) 4	853+00			NB T.H. 35E MED.	9BD-49 400
21					
(1) 5	855+70			NB T.H. 35E MED.	9BD-49 400
(1) 6	858+50			NB T.H. 35E MED.	9BD-49 400
19					
(1) 7	861+20			NB T.H. 35E MED.	9BD-49 400
(1) 8	863+90			NB T.H. 35E MED.	9BD-49 400
17					
(1) 9	866+60			NB T.H. 35E MED.	9BD-49 400
(1) 10	869+30			NB T.H. 35E MED.	9BD-49 400
15					
(1) 11	872+00			NB T.H. 35E MED.	9BD-49 400
12	873+60	-		NB T.H. 35E	L 250
13	873+60	-		NB T.H. 35E	L 250
24	846+40	-		NB T.H. 35E	L 250
25	2038+00	-		WB694	9-49 400
26	2035+00	-		WB694	9-49 400
27	2032+05	-		WB694	9-49 400
28	2029+10	-		WB694	9-49 400
29	2027+00	-	-	WB694	9-49 400
30	2024+80	-	-	WB694	9-49 400
31	1023+20	-		EB694	9-49 400
32	1025+80	-		EB694	9-49 400
33	1028+25	-		EB694	9-49 400
34	1031+30	-		EB694	9-49 400
35	1034+30	-		EB694	9-49 400
(1) 36	1037+15	-		EB694	6B-40 250
(1) 37	1039+50	-		EB694	6B-40 250

(1) ANCHORAGE BY OTHERS