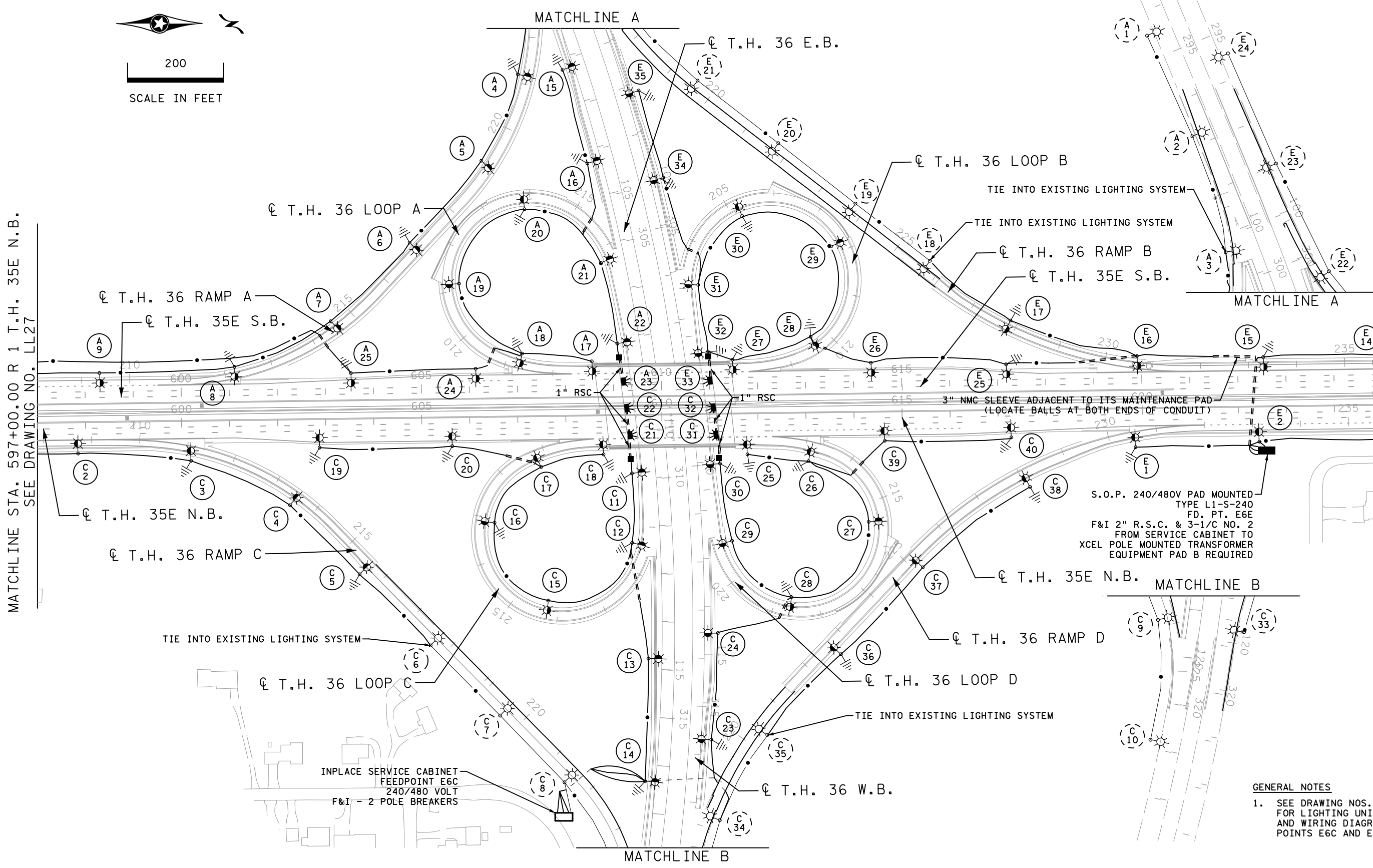


MATCHLINE STA. 597+00.00 R 1 T.H. 35E N.B.
SEE DRAWING NO. LL27

MATCHLINE STA. 625+00.00 R 1 T.H. 35E N.B.
SEE DRAWING NO. LL29



S.O.P. 240/480V PAD MOUNTED
TYPE L1-S-240
FD. PT. E6E
F&I 2" R.S.C. & 3-1/C NO. 2
FROM SERVICE CABINET TO
XCEL POLE MOUNTED TRANSFORMER
EQUIPMENT PAD B REQUIRED

INPLACE SERVICE CABINET
FEEDPOINT E6C
240/480 VOLT
F&I - 2 POLE BREAKERS

- GENERAL NOTES**
- SEE DRAWING NOS. LL31 AND LL32 FOR LIGHTING UNIT TABULATIONS AND WIRING DIAGRAMS FOR FEED POINTS E6C AND E6E.

10:38:28 AM
3/7/2016
C:\work\king\proj\ect\l\se\mcccurdy\dms37391\cd6280367_ob_1128.dgn

0	07/08/14	JJG	MPM	JWD	INITIAL RELEASE FOR CONSTRUCTION - DP T-6
1	03/01/16	SHS	MPM	JWD	RECORD PLAN
NO	DATE	BY	CKD	APPR	REVISION
DRAWING NO.: LL28					

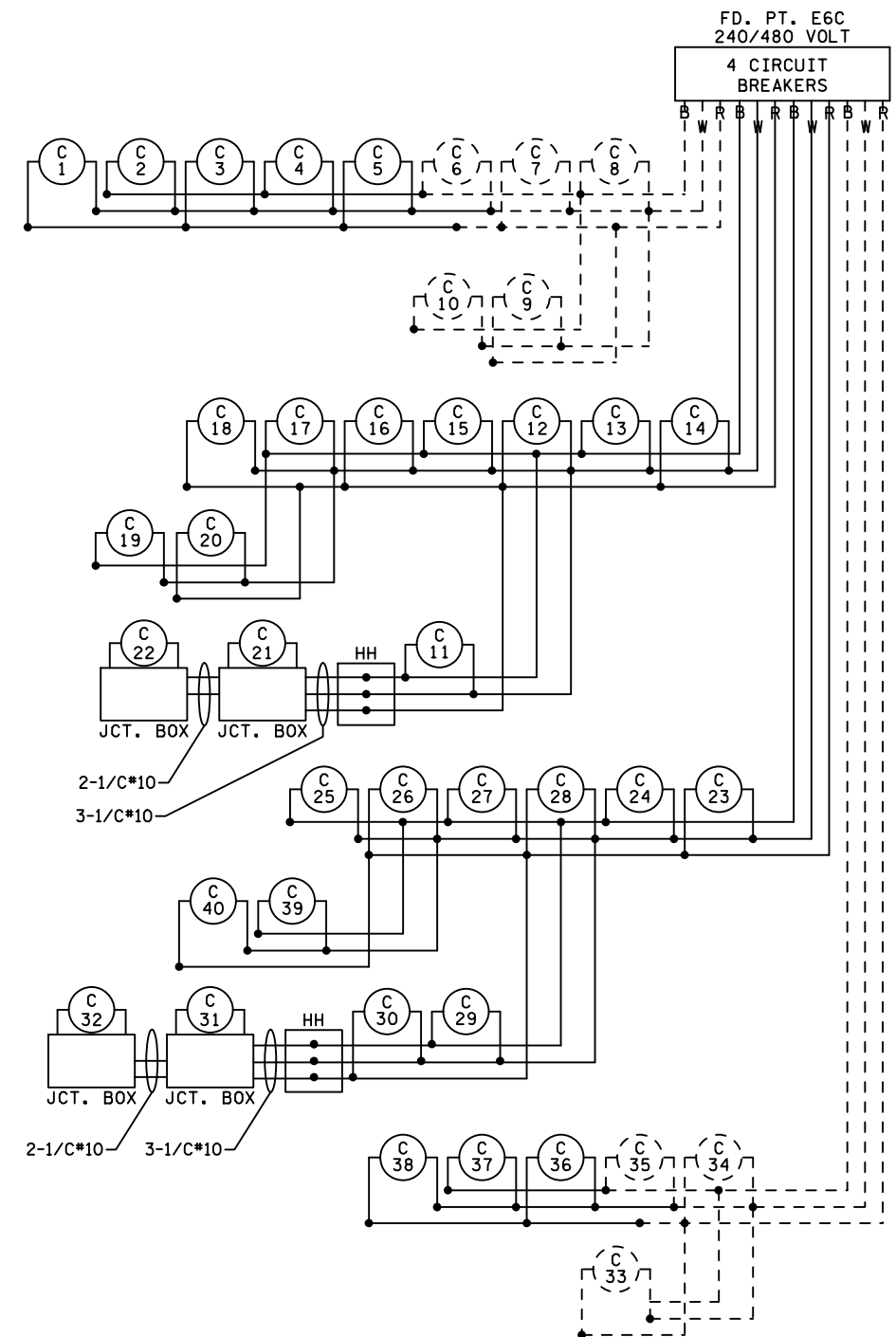
RECORD DRAWING NOTE

THESE RECORD DRAWINGS WERE DEVELOPED BASED ON THE PREVIOUS DRAWING REVISIONS AND INFORMATION TRANSMITTED FROM THE FIELD BY OTHERS. THE INFORMATION CONTAINED WITHIN THIS RECORD AS-BUILT PLAN REPRESENTS THE ACTUAL CONDITIONS FOR ALL CHANGES OF WHICH ALLIANT IS AWARE. FUTURE USERS OF THESE DRAWINGS SHOULD VERIFY AS-BUILT CONDITIONS IN THE FIELD IN ALL CIRCUMSTANCES.



FEEDPOINT E6C
LIGHTING STANDARDS AND BASES

NO.	STATION	LT.	RT.	LOCATION	TYPE
1	595+44		45.4'	T.H. 35E N.B.	12-49 (SALVAGED)
2	597+84		52.2'	T.H. 35E N.B.	12-49 (SALVAGED)
3	600+19		70.3'	T.H. 35E N.B.	12-49 (SALVAGED)
4	213+51		24.9'	T.H. 36 RAMP C	9-40 (SALVAGED)
5	215+60		30.2'	T.H. 36 RAMP C	9-40 (SALVAGED)
6	-		-	T.H. 36 RAMP C	9-40 (INPLACE)
7	-		-	T.H. 36 RAMP C	9-40 (INPLACE)
8	-		-	T.H. 36 RAMP C	9-40 (INPLACE)
9	-		-	T.H. 36 E.B.	9-40 (INPLACE)
10	-		-	T.H. 36 E.B.	9-40 (INPLACE)
11	309+85		61.2'	T.H. 36 E.B.	9-40 (SALVAGED)
12	311+31		70.4'	T.H. 36 E.B.	9-40 (SALVAGED)
13	313+77		40.1'	T.H. 36 E.B.	9-40 (SALVAGED)
14	316+35		33.8'	T.H. 36 E.B.	9-40 (SALVAGED)
15	214+26		32.1'	T.H. 36 LOOP C	9-40 (SALVAGED)
16	216+91		31.9'	T.H. 36 LOOP C	9-40 (SALVAGED)
17	218+83		30.5'	T.H. 36 LOOP C	9-40 (SALVAGED)
18	608+78		68.6'	T.H. 35E N.B.	12-49 (SALVAGED)
19	602+87		46.5'	T.H. 35E N.B.	12-49 (SALVAGED)
20	605+63		47.1'	T.H. 35E N.B.	12-49 (SALVAGED)
21	308+85		36.6'	T.H. 36 E.B.	L
22	308+43		37.0'	T.H. 36 E.B.	L
23	315+68	33.2'		T.H. 36 W.B.	9-40 (SALVAGED)
24	313+48	39.6'		T.H. 36 W.B.	9-40 (SALVAGED)
25	611+77		72.3'	T.H. 35E N.B.	12-49 (SALVAGED)
26	213+14		35.0'	T.H. 36 LOOP D	9-40 (SALVAGED)
27	215+46		33.3'	T.H. 36 LOOP D	9-40 (SALVAGED)
28	218+65		32.5'	T.H. 36 LOOP D	9-40 (SALVAGED)
29	311+59	73.5'		T.H. 36 W.B.	9-40 (SALVAGED)
30	310+00	59.0'		T.H. 36 W.B.	9-40 (SALVAGED)
31	309+17	36.9'		T.H. 36 W.B.	L
32	308+77	36.9'		T.H. 36 W.B.	L
33	-		-	T.H. 36 W.B.	9-40 (INPLACE)
34	-		-	T.H. 36 W.B.	9-40 (INPLACE)
35	-		-	T.H. 36 RAMP D	9-40 (INPLACE)
36	222+67		32.3'	T.H. 36 RAMP D	9-40 (SALVAGED)
37	225+16		32.1'	T.H. 36 RAMP D	9-40 (SALVAGED)
38	228+07		32.8'	T.H. 36 RAMP D	9-40 (SALVAGED)
39	614+63		47.8'	T.H. 35E N.B.	12-49 (SALVAGED)
40	617+27		44.4'	T.H. 35E N.B.	12-49 (SALVAGED)



B AND R DENOTE CURRENT CARRYING CONDUCTORS
W DENOTES NEUTRAL CONDUCTOR
DASHED DENOTES INPLACE

10:38:42 AM
3/7/2016
C:\pwork\proj\ect\se\mccur\dy\dms37391\cd6280367_ab_1131.dgn

0	07/08/14	JJG	MPM	JWD	INITIAL RELEASE FOR CONSTRUCTION - DP T-6
1	03/01/16	SHS	MPM	JWD	RECORD PLAN
NO	DATE	BY	CKD	APPR	REVISION
DRAWING NO.: LL31					

RECORD DRAWING NOTE
THESE RECORD DRAWINGS WERE DEVELOPED BASED ON THE PREVIOUS DRAWING REVISIONS AND INFORMATION TRANSMITTED FROM THE FIELD BY OTHERS. THE INFORMATION CONTAINED WITHIN THIS RECORD AS-BUILT PLAN REPRESENTS THE ACTUAL CONDITIONS FOR ALL CHANGES OF WHICH ALLIANT IS AWARE. FUTURE USERS OF THESE DRAWINGS SHOULD VERIFY AS-BUILT CONDITIONS IN THE FIELD IN ALL CIRCUMSTANCES.



I-35E MNPASS PROJECT (S.P. 6280-367)
PROPOSED MNDOT LIGHTING SYSTEM
LAYOUT

SHEET
LL31
OF

LEGEND

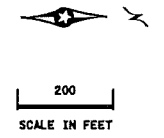
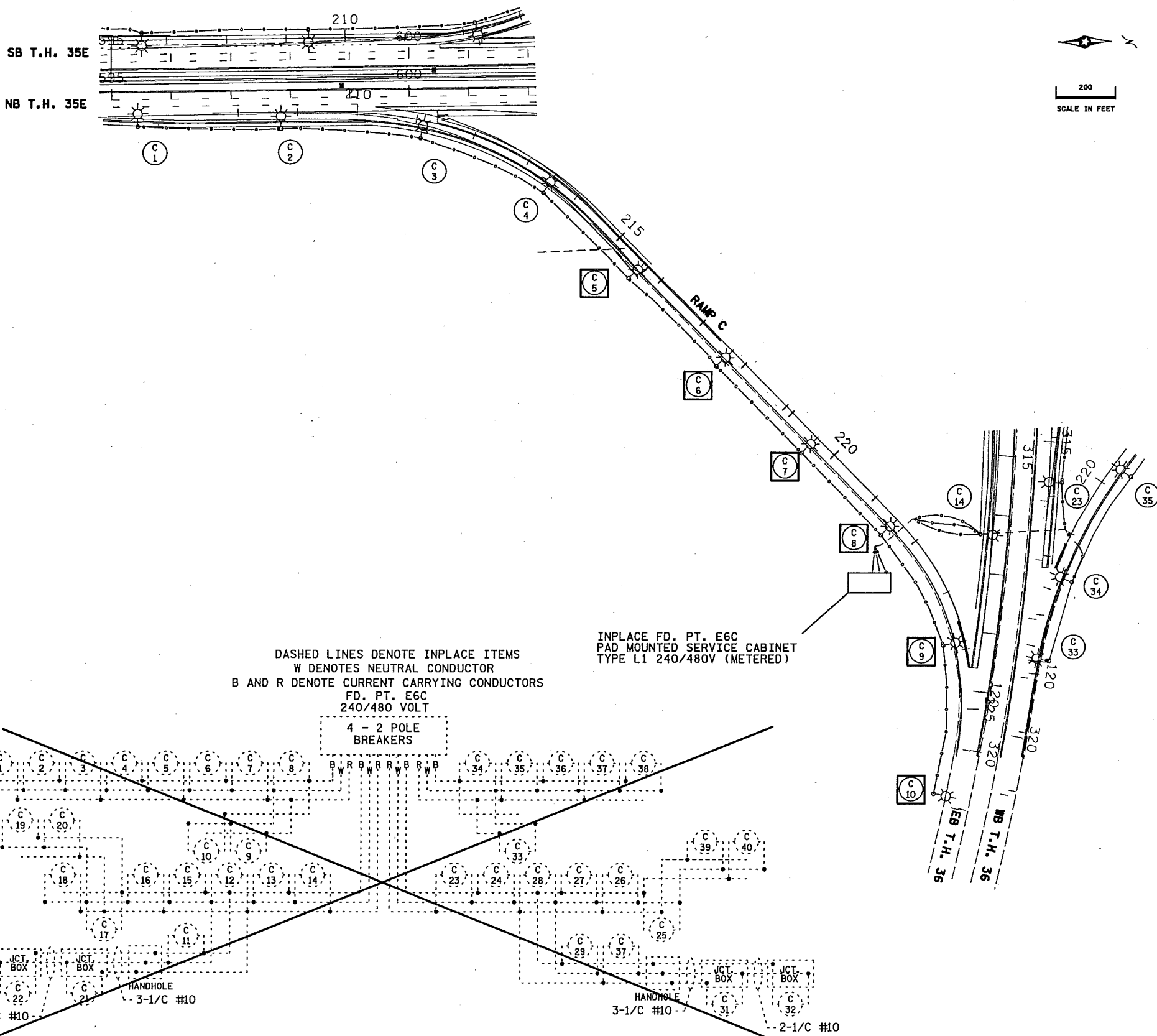
- REMOVE INPLACE FOUNDATION
SALVAGE LIGHTING UNIT
- LIGHTING UNIT IDENTIFIER
- INPLACE FD PT CABINET
- INPLACE DIRECT BURIED CABLE
- INPLACE LIGHTING UNIT
- INPLACE CONDUIT

NOTES:

-REMOVE DIRECT BURIED LIGHTING CABLES FROM SERVICE CABINET TO FIRST LIGHTING UNIT IN EACH CIRCUIT.

**FEEDPOINT E6C
LIGHTING STANDARDS AND BASES**

NO.	STATION	LT.	RT.	LOCATION	TYPE
1	595+44		45.4'	T.H. 35E N.B.	12-49 (SALVAGED)
2	597+84		52.2'	T.H. 35E N.B.	12-49 (SALVAGED)
3	600+19		70.3'	T.H. 35E N.B.	12-49 (SALVAGED)
4	213+51		24.9'	T.H. 36 RAMP C	9-40 (SALVAGED)
5	215+60		30.2'	T.H. 36 RAMP C	9-40 (SALVAGED)
6	-		-	T.H. 36 RAMP C	9-40 (INPLACE)
7	-		-	T.H. 36 RAMP C	9-40 (INPLACE)
8	-		-	T.H. 36 RAMP C	9-40 (INPLACE)
9	-		-	T.H. 36 E.B.	9-40 (INPLACE)
10	-		-	T.H. 36 E.B.	9-40 (INPLACE)
11	309+85		61.2'	T.H. 36 E.B.	9-40 (SALVAGED)
12	311+31		70.4'	T.H. 36 E.B.	9-40 (SALVAGED)
13	313+77		40.1'	T.H. 36 E.B.	9-40 (SALVAGED)
14	316+35		33.8'	T.H. 36 E.B.	9-40 (SALVAGED)
15	214+26		38.1'	T.H. 36 LOOP C	9-40 (SALVAGED)
16	216+91		31.9'	T.H. 36 LOOP C	9-40 (SALVAGED)
17	218+83		30.5'	T.H. 36 LOOP C	9-40 (SALVAGED)
18	608+78		68.6'	T.H. 35E N.B.	12-49 (SALVAGED)
19	602+87		46.5'	T.H. 35E N.B.	12-49 (SALVAGED)
20	605+63		47.1'	T.H. 35E N.B.	12-49 (SALVAGED)
21	308+85		36.6'	T.H. 36 E.B.	L
22	308+43		37.0'	T.H. 36 E.B.	L
23	315+68	33.2'		T.H. 36 W.B.	9-40 (SALVAGED)
24	313+48	39.6'		T.H. 36 W.B.	9-40 (SALVAGED)
25	611+77		72.3'	T.H. 35E N.B.	12-49 (SALVAGED)
26	213+14		35.0'	T.H. 36 LOOP D	9-40 (SALVAGED)
27	215+46		33.3'	T.H. 36 LOOP D	9-40 (SALVAGED)
28	218+65		32.5'	T.H. 36 LOOP D	9-40 (SALVAGED)
29	311+59	73.5'		T.H. 36 W.B.	9-40 (SALVAGED)
30	310+00	59.0'		T.H. 36 W.B.	9-40 (SALVAGED)
31	309+17	36.9'		T.H. 36 W.B.	L
32	308+77	36.9'		T.H. 36 W.B.	L
33	-		-	T.H. 36 W.B.	9-40 (INPLACE)
34	-		-	T.H. 36 W.B.	9-40 (INPLACE)
35	-		-	T.H. 36 RAMP D	9-40 (INPLACE)
36	222+67		32.3'	T.H. 36 RAMP D	9-40 (SALVAGED)
37	225+16		32.1'	T.H. 36 RAMP D	9-40 (SALVAGED)
38	228+07		32.8'	T.H. 36 RAMP D	9-40 (SALVAGED)
39	614+63		47.8'	T.H. 35E N.B.	12-49 (SALVAGED)
40	617+27		44.4'	T.H. 35E N.B.	12-49 (SALVAGED)



PLOTTED/REVISED: 30-JAN-2018

DISTRICT #: Metro
I/PLOT NAME: 16212-179removal
PATH & FILENAME: Projects\DM_R05\0366212\179T\Traffic\Lighting\16212-179removal.dgn

BY	DATE	REVISIONS

DRAWN BY: JC CKD BY: PB

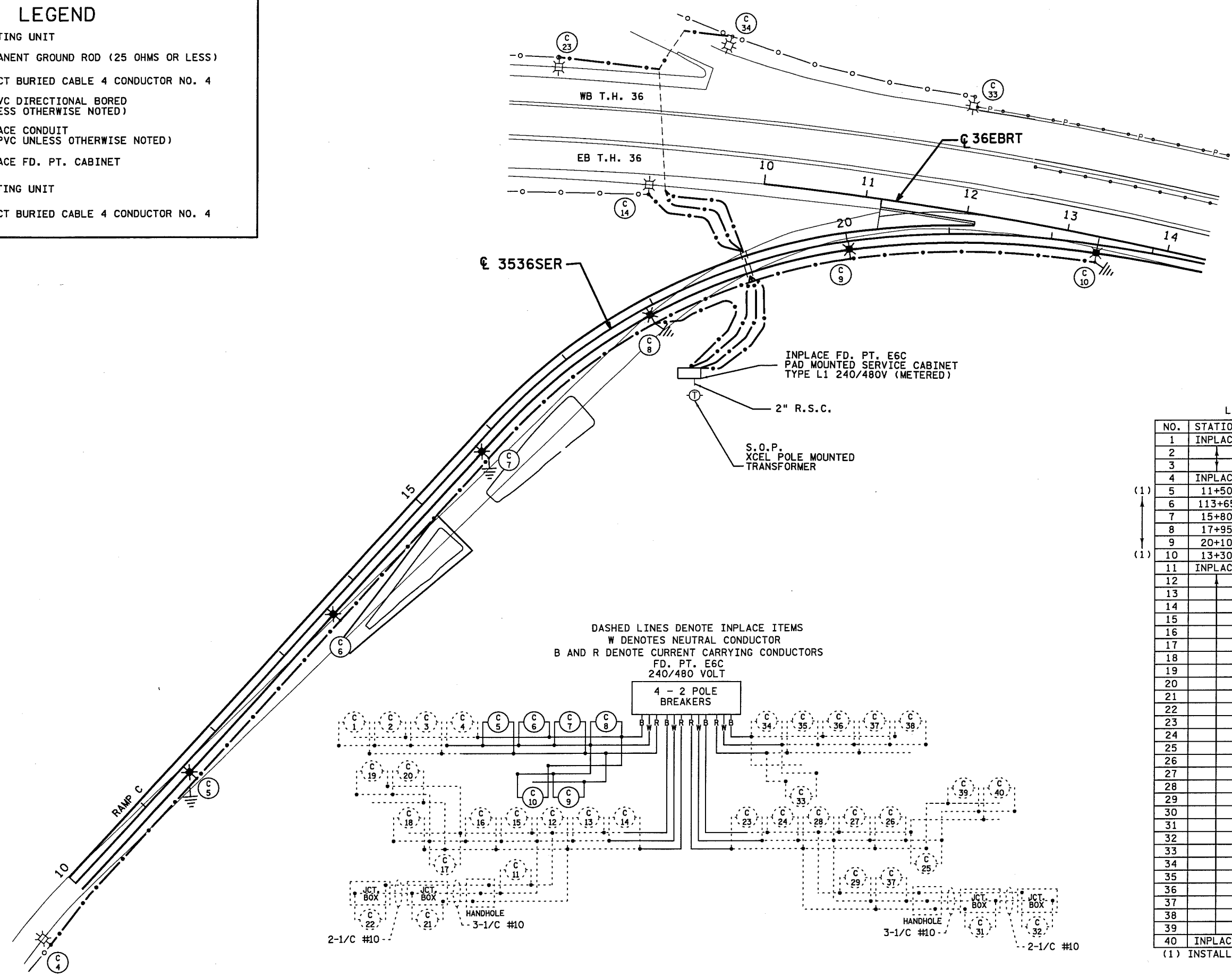
CERTIFIED BY *Michael P. Lubensky* LIC. NO. 19863 DATE: 30-JAN-2018
LICENSED PROFESSIONAL ENGINEER

REMOVAL PLAN

STATE PROJ.NO. 6212-179 (T.H. 36) SHEET NO. SL3 OF SL4 SHEETS

LEGEND

- LIGHTING UNIT
- PERMANENT GROUND ROD (25 OHMS OR LESS)
- DIRECT BURIED CABLE 4 CONDUCTOR NO. 4
- 3" PVC DIRECTIONAL BORED (UNLESS OTHERWISE NOTED)
- INPLACE CONDUIT (3" PVC UNLESS OTHERWISE NOTED)
- INPLACE FD. PT. CABINET
- LIGHTING UNIT
- DIRECT BURIED CABLE 4 CONDUCTOR NO. 4



FEEDPOINT E6C
LIGHTING UNIT LOCATION AND TYPE

NO.	STATION	LT.	RT.	LOCATION	TYPE	FOUNDATION
1	INPLACE		X	NB TH35E	12-49 LED	INPLACE
2			X	NB TH35E	12-49 LED	
3			X	NB TH35E	12-49 LED	
4	INPLACE		X	RAMP C TH36	9-40 LED	INPLACE
(1) 5	11+50		X			E
6	113+65		X			
7	15+80		X			
8	17+95		X			
9	20+10		X	RAMP C TH36		
(1) 10	13+30		X	EB TH36		E
11	INPLACE		X			INPLACE
12			X			
13			X			
14			X	EB TH36		
15			X	LOOP C TH36		
16			X	LOOP C TH36		
17			X	LOOP C TH36	9-40 LED	
18			X	NB TH35E	12-49 LED	
19			X	NB TH35E	12-49 LED	
20			X	NB TH35E	12-49 LED	
21			X	EB TH36	L	
22			X	EB TH36	L	
23		X		WB TH36	9-40 LED	
24		X		WB TH36	9-40 LED	
25		X		NB TH35E	12-49 LED	
26		X		LOOP D TH36	9-40 LED	
27		X		LOOP D TH36		
28		X		LOOP D TH36		
29		X		WB TH36		
30		X			9-40 LED	
31		X			L	
32		X			L	
33		X			9-40 LED	
34		X		WB TH36		
35		X		RAMP D TH36		
36		X				
37		X				
38		X		RAMP D TH36	9-40 LED	
39		X		NB TH35E	12-49 LED	
40	INPLACE		X	NB TH35E	12-49 LED	INPLACE

(1) INSTALL SALVAGE LUMINAIRE

DISTRICT #: Metro
 PLOT NAME: 16212-179Jlt.lo
 PATH & FILENAME: Projects\DM_R0S\036\6212\179\Traffic\Lighting\6212-179Jlt.loadgn

BY	DATE	REVISIONS	FEEDPOINT: E6C LOCATION: NB 35E RAMP TO EB 36	LIGHTING PLAN
			METER ADDRESS: 340 HIGHWAY DR, MAPLEWOOD, MN 55109	
			CERTIFIED BY <i>Michael P. Dubinsky</i> LIC. NO. 19863 DATE: 15-FEB-2018	STATE PROJ. NO. 6212-179 (T.H. 36) SHEET NO. SL4 OF SL4 SHEETS
DRAWN BY: JC CKD BY: PB				