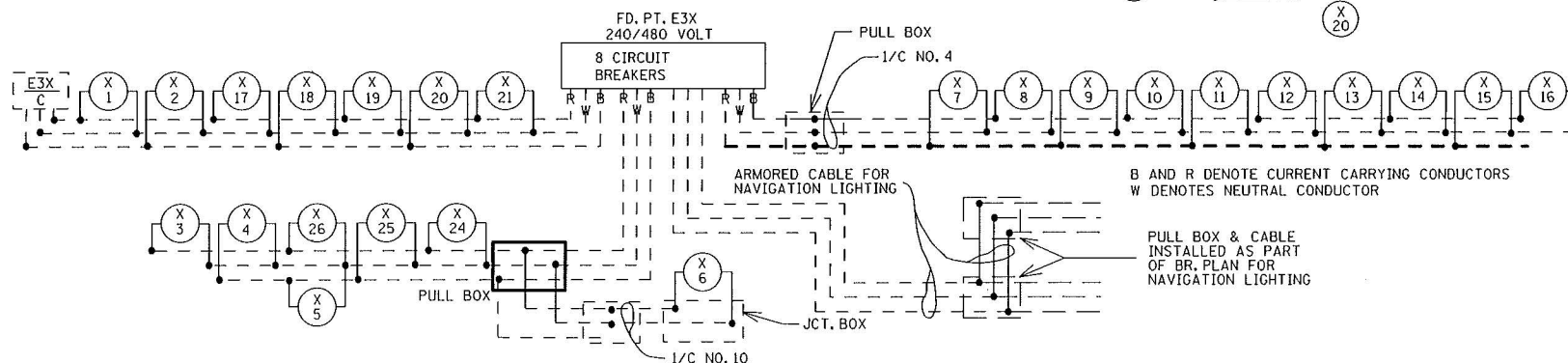
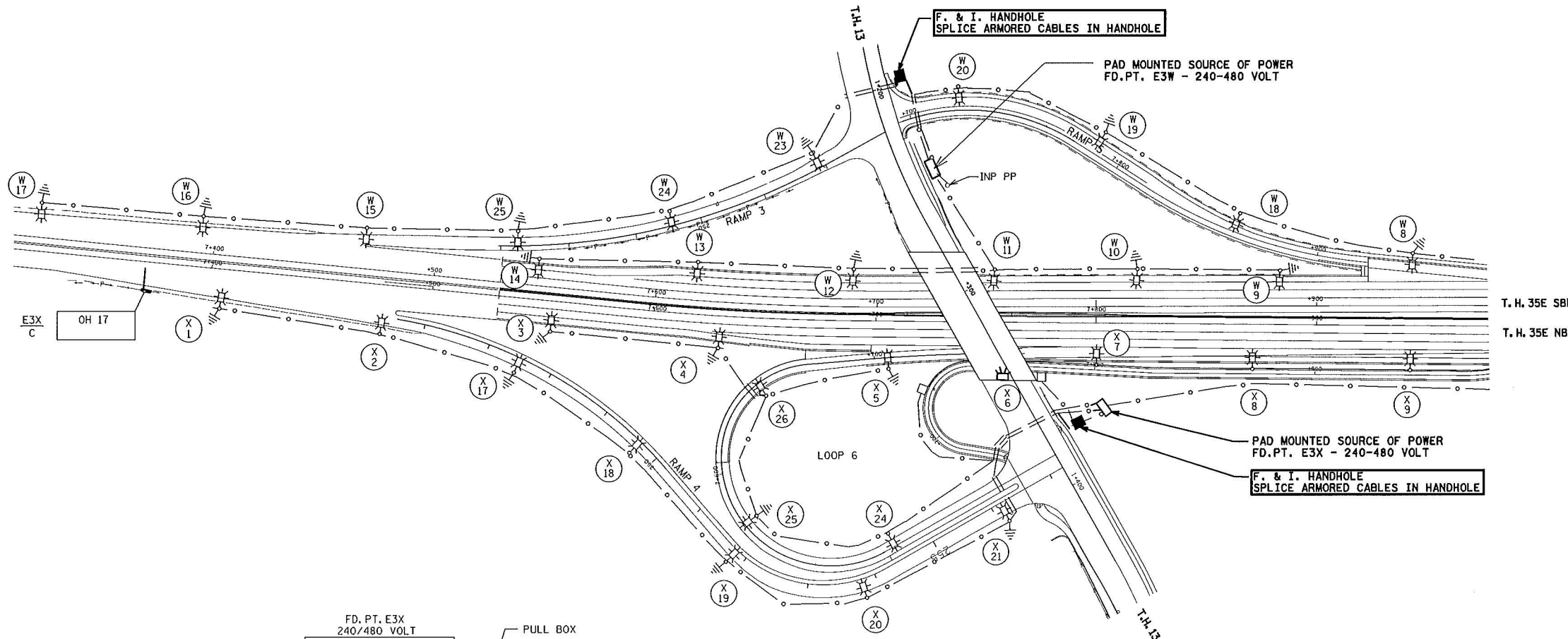
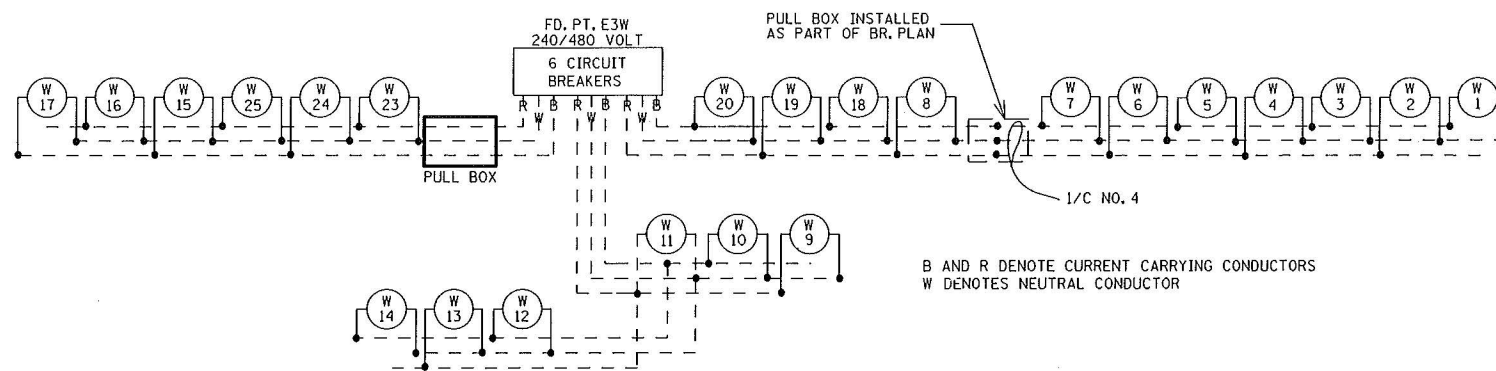


**LEGEND**

- F.&I. HANDHOLE
- INPLACE - PAD MOUNTED SOURCE OF POWER (VOLTAGE AS INDICATED ON PLAN)
- ⊛ INPLACE - 250 WATT HIGH PRESSURE SODIUM LIGHTING UNIT
- ⊞ INPLACE - 250 WATT HIGH PRESSURE SODIUM UNDERPASS LIGHTING UNIT
- === INPLACE - 78 mm RIGID STEEL CONDUIT EXCEPT AS NOTED OTHERWISE
- INPLACE - DIRECT BURIED POWER CABLE 3 CONDUCTOR NO. 4 AWG ARMORED CABLE SPEC NO. 3815
- ⊥ PERMANENT GROUND ROD (25 OHMS OR LESS)

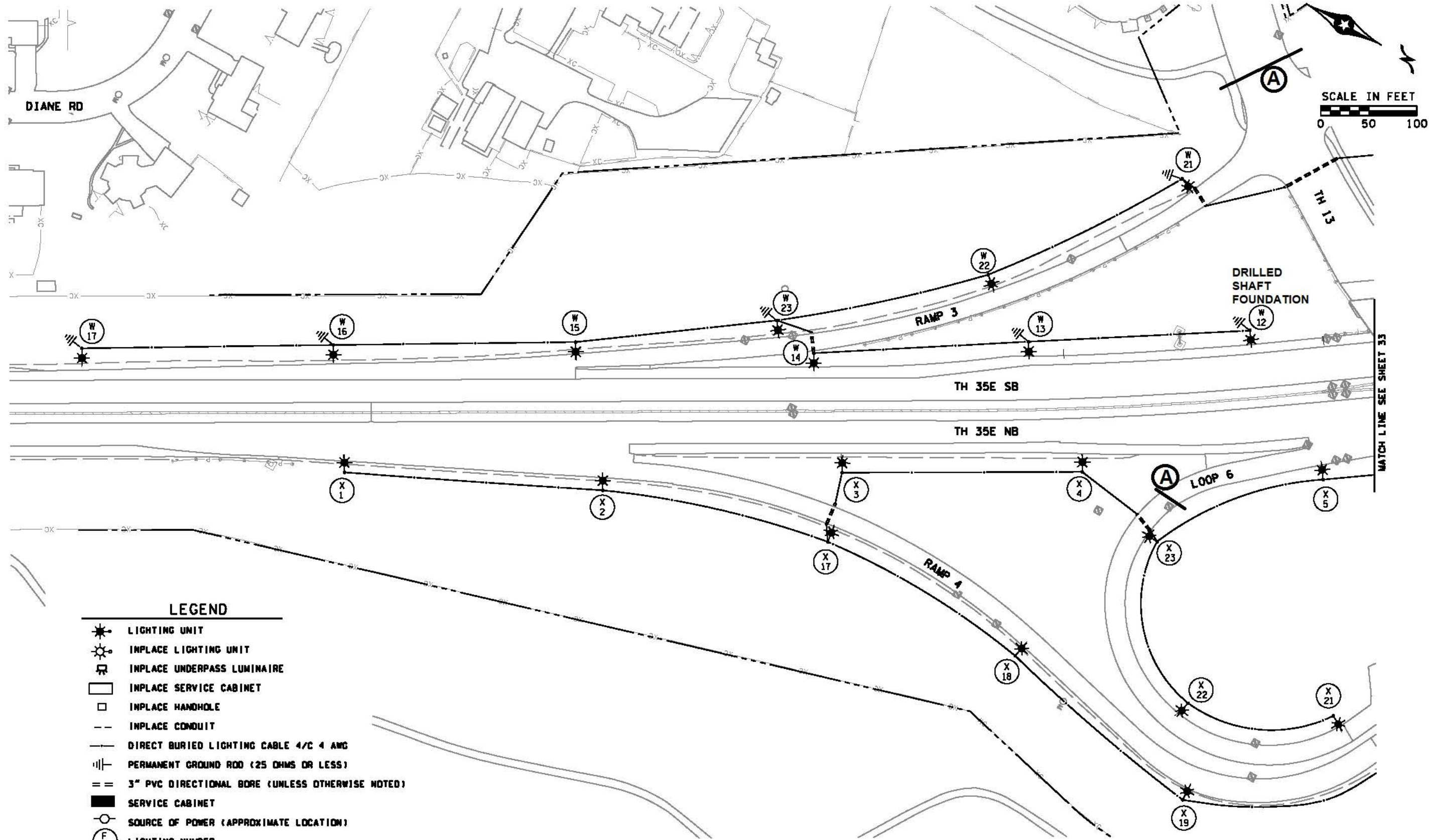


AS BUILT 1/5/12

PLOTTED/REVISED: 1/5/2012

DISTRICT #: METRO  
 I/PLOT NAME: E03W\_E03XAB  
 PATH & FILENAME: IP\_PWP-d0705484-E03W\_E03XAB.dgn

BY	DATE	REVISIONS	FEEPOINTS: E3W AND E3X LOCATION: TH 13 AT 35E METER ADDRESS: (E3X)949 SIBLEY MEMORIAL HWY & (E3W)957 SIBLEY MEMORIAL	<b>LIGHTING PLAN</b>	
DRAWN BY: GB CKD BY: PB			CERTIFIED BY _____ LIC. NO. 19863 DATE: 1/5/2012	STATE PROJ. NO. SP1902-56 (T.H.13) SHEET NO. L2 OF L2 SHEETS	



- LEGEND**
- LIGHTING UNIT
  - INPLACE LIGHTING UNIT
  - INPLACE UNDERPASS LUMINAIRE
  - INPLACE SERVICE CABINET
  - INPLACE HANDHOLE
  - INPLACE CONDUIT
  - DIRECT BURIED LIGHTING CABLE 4/C 4 AWG
  - PERMANENT GROUND ROD (25 OHMS OR LESS)
  - 3" PVC DIRECTIONAL BORE (UNLESS OTHERWISE NOTED)
  - SERVICE CABINET
  - SOURCE OF POWER (APPROXIMATE LOCATION)
  - LIGHTING NUMBER
  - MN/DOT ROW
  - OHP - OVERHEAD POWER LINES

**AS-BUILT**

DATE: 3/12/2018 3:09:22 PM  
 PATH & FILENAME: G:\1010964-000\Cad\Plan\10964-000\_ip19.dgn

NO.	DATE	BY	CHK	REVISIONS

Design By: ES  
 Plan By: MF  
 Checked By: ES  
 Approved By: SD

I HEREBY CERTIFY THAT THIS PLAN WAS PREPARED BY ME OR UNDER MY DIRECT SUPERVISION AND THAT I AM A DULY LICENSED PROFESSIONAL ENGINEER UNDER THE LAWS OF THE STATE OF MINNESOTA.

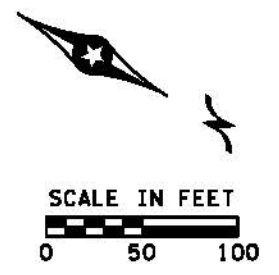
*Ben Delmore*  
 BEN DELMORE, PE  
 DATE: 03/12/18 LICENSE NO. 40845



LIGHTING REPLACEMENT ON  
 TH 36 AND TH 35E  
 MNDOT

SYSTEM C  
 TH 35E: SOUTH OF MISSISSIPPI  
 S.P.6212-185 (TH36), SP.6211-106 (TH36),  
 S.P.1982-198 (TH35E), S.P.6280-402 (TH35E)

SHEET  
 32  
 OF  
 46  
 SHEETS

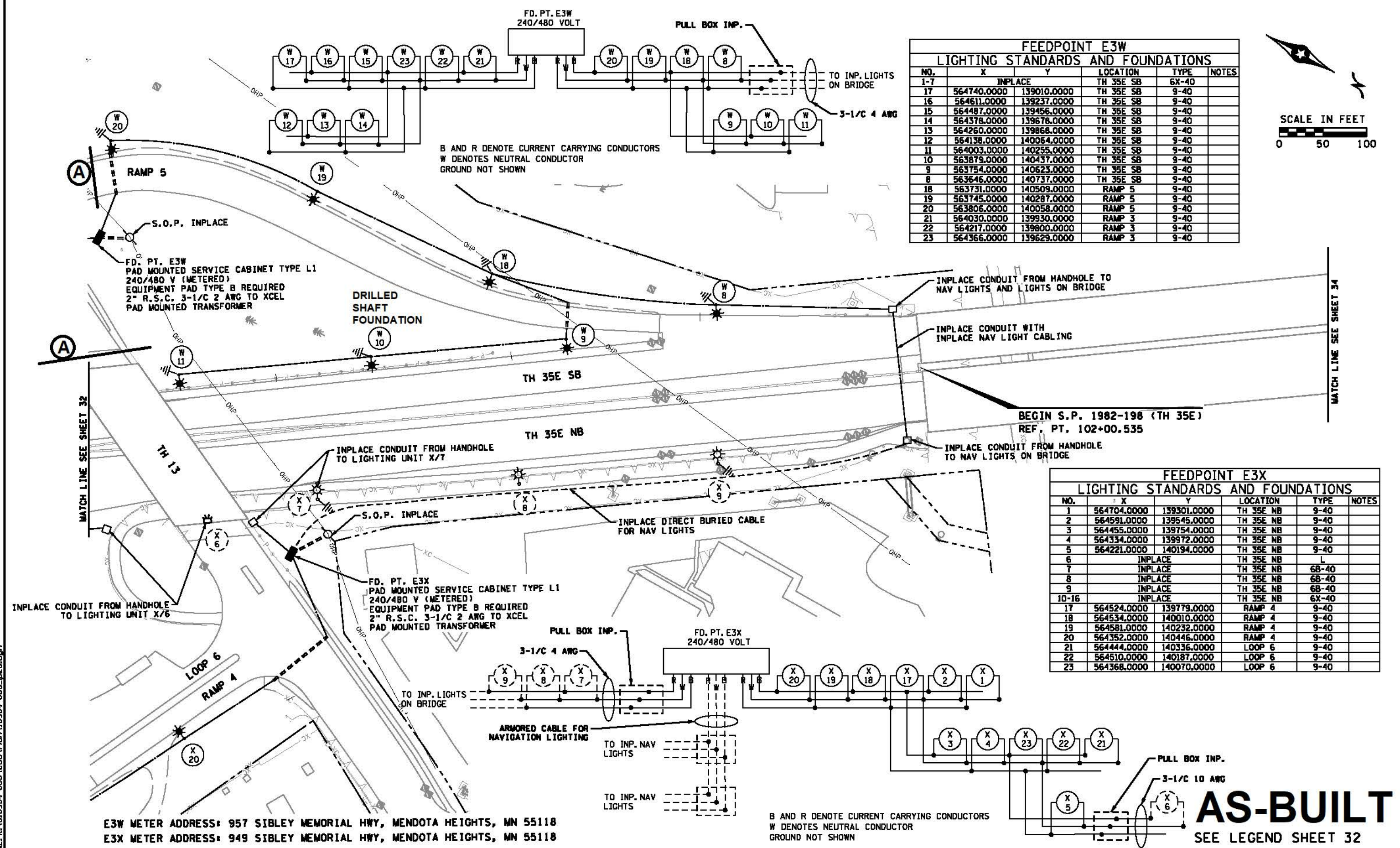


**FEEDPOINT E3W  
LIGHTING STANDARDS AND FOUNDATIONS**

NO.	X	Y	LOCATION	TYPE	NOTES
1-7	INPLACE		TH 35E SB	6X-40	
17	564740.0000	139010.0000	TH 35E SB	9-40	
16	564611.0000	139237.0000	TH 35E SB	9-40	
15	564487.0000	139456.0000	TH 35E SB	9-40	
14	564378.0000	139678.0000	TH 35E SB	9-40	
13	564260.0000	139868.0000	TH 35E SB	9-40	
12	564138.0000	140064.0000	TH 35E SB	9-40	
11	564003.0000	140255.0000	TH 35E SB	9-40	
10	563879.0000	140437.0000	TH 35E SB	9-40	
9	563754.0000	140623.0000	TH 35E SB	9-40	
8	563646.0000	140737.0000	TH 35E SB	9-40	
18	563731.0000	140509.0000	RAMP 5	9-40	
19	563745.0000	140287.0000	RAMP 5	9-40	
20	563806.0000	140058.0000	RAMP 5	9-40	
21	564030.0000	139930.0000	RAMP 3	9-40	
22	564217.0000	139800.0000	RAMP 3	9-40	
23	564366.0000	139629.0000	RAMP 3	9-40	

**FEEDPOINT E3X  
LIGHTING STANDARDS AND FOUNDATIONS**

NO.	X	Y	LOCATION	TYPE	NOTES
1	564704.0000	139301.0000	TH 35E NB	9-40	
2	564591.0000	139545.0000	TH 35E NB	9-40	
3	564455.0000	139754.0000	TH 35E NB	9-40	
4	564334.0000	139972.0000	TH 35E NB	9-40	
5	564221.0000	140194.0000	TH 35E NB	9-40	
6	INPLACE		TH 35E NB	L	
7	INPLACE		TH 35E NB	68-40	
8	INPLACE		TH 35E NB	68-40	
9	INPLACE		TH 35E NB	68-40	
10-16	INPLACE		TH 35E NB	6X-40	
17	564524.0000	139779.0000	RAMP 4	9-40	
18	564534.0000	140010.0000	RAMP 4	9-40	
19	564581.0000	140232.0000	RAMP 4	9-40	
20	564352.0000	140446.0000	RAMP 4	9-40	
21	564444.0000	140336.0000	LOOP 6	9-40	
22	564510.0000	140187.0000	LOOP 6	9-40	
23	564368.0000	140070.0000	LOOP 6	9-40	



E3W METER ADDRESS: 957 SIBLEY MEMORIAL HWY, MENDOTA HEIGHTS, MN 55118  
E3X METER ADDRESS: 949 SIBLEY MEMORIAL HWY, MENDOTA HEIGHTS, MN 55118

AS-BUILT

SEE LEGEND SHEET 32

DATE: 3/12/2018 3:09:23 PM  
PATH & FILENAME: G:\1010964-000\Cad\Plan\10964-000\_ip20.dgn

NO.	DATE	BY	CHK	REVISIONS

Design By: EG  
Plan By: MF  
Checked By: ES  
Approved By: SD

I HEREBY CERTIFY THAT THIS PLAN WAS PREPARED BY ME OR UNDER MY DIRECT SUPERVISION AND THAT I AM A DULY LICENSED PROFESSIONAL ENGINEER UNDER THE LAWS OF THE STATE OF MINNESOTA.

*Sean Delmore*  
SEAN DELMORE, PE  
DATE: 03/12/18 LICENSE NO. 40845



LIGHTING REPLACEMENT ON  
TH 36 AND TH 35E  
MNDOT

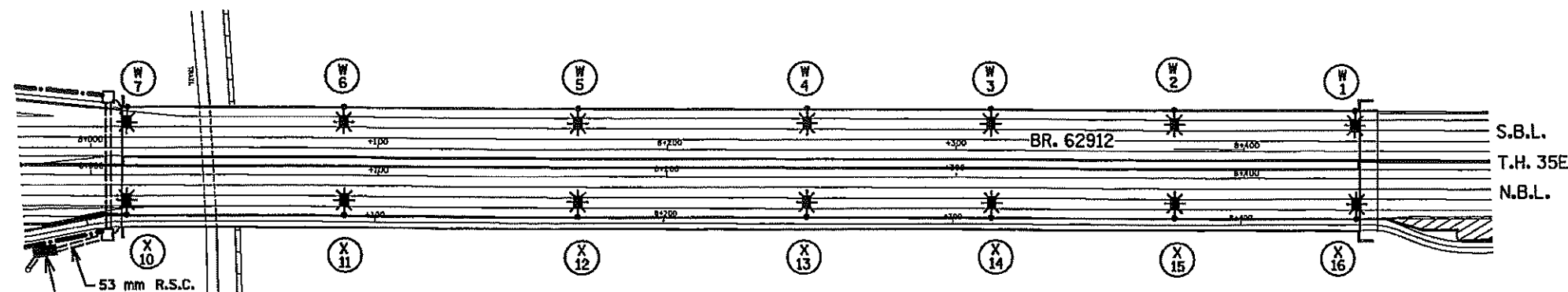
SYSTEM C  
TH 35E: SOUTH OF MISSISSIPPI  
S.P.6212-185 (TH36), S.P.6211-106 (TH36),  
S.P.1982-198 (TH35E), S.P.6280-402 (TH35E)

SHEET  
33  
OF  
46  
SHEETS

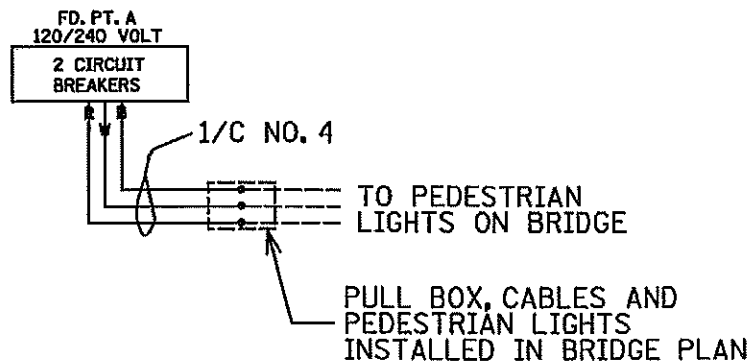
FD. PT. E3W

LIGHTING STANDARDS AND BASES					
NO.	STATION	LT.	RT.	LOCATION	TYPE
1	8+433	--	--	T.H. 35E SBL	2BX-12
2	8+376	--	--	T.H. 35E SBL	2BX-12
3	8+312	--	--	T.H. 35E SBL	2BX-12
4	8+248	--	--	T.H. 35E SBL	2BX-12
5	8+169	--	--	T.H. 35E SBL	2BX-12
6	8+088	--	--	T.H. 35E SBL	2BX-12
7	8+015	--	--	T.H. 35E SBL	2BX-12
8	7+947	--	--	T.H. 35E SBL	2X-12
9	7+883	--	--	T.H. 35E SBL	2X-12
10	7+818	--	--	T.H. 35E SBL	2X-12
11	7+753	--	--	T.H. 35E SBL	2X-12
12	7+689	--	--	T.H. 35E SBL	2X-12
13	7+618	--	--	T.H. 35E SBL	2X-12
14	7+556	--	--	T.H. 35E SBL	2X-12
15	7+467	--	--	T.H. 35E SBL	2X-12
16	7+394	--	--	T.H. 35E SBL	2X-12
17	7+321	--	--	T.H. 35E SBL	2X-12
18	7+875	--	--	RAMP 5	2X-12
19	7+800	--	--	RAMP 5	2X-12
20	7+730	--	--	RAMP 5	2X-12
21	1+196	--	--	T.H. 13	2X-12
22	1+233	--	--	T.H. 13	2X-12
23	251+80	--	--	RAMP 3	2X-12
24	249+50	--	--	RAMP 3	2X-12
25	242+25	--	--	RAMP 3	2X-12

PLACE LIGHTING UNITS 3 m BEHIND SHOULDER OR AS DIRECTED BY THE ENGINEER



PAD MOUNTED SOURCE OF POWER SERVICE CABINET SECONDARY TYPE L1 FD. PT. A, 120/240 VOLT, METERED, XCEL ENERGY. F. & I. 53 mm R.S.C. & 3 - 1/C NO. 2 TO XCEL ENERGY POWER POLE. EQUIPMENT PAD B REQUIRED. THIS SOURCE OF POWER IS FOR DECORATIVE POLES ON BIKE PATH INSTALLED AS PART OF THE BRIDGE PLAN.



FD. PT. E3X

LIGHTING STANDARDS AND BASES					
NO.	STATION	LT.	RT.	LOCATION	TYPE
1	7+405	--	--	T.H. 35E NBL	2X-12
2	7+478	--	--	T.H. 35E NBL	2X-12
3	7+554	--	--	T.H. 35E NBL	2X-12
4	7+630	--	--	T.H. 35E NBL	2X-12
5	7+706	--	--	T.H. 35E NBL	2X-12
6	7+758	--	--	T.H. 35E NBL	L
7	7+800	--	--	T.H. 35E NBL	2BX-12
8	7+871	--	--	T.H. 35E NBL	2BX-12
9	7+942	--	--	T.H. 35E NBL	2BX-12
10	8+015	--	--	T.H. 35E NBL	2BX-12
11	8+088	--	--	T.H. 35E NBL	2BX-12
12	8+169	--	--	T.H. 35E NBL	2BX-12
13	8+248	--	--	T.H. 35E NBL	2BX-12
14	8+312	--	--	T.H. 35E NBL	2BX-12
15	8+376	--	--	T.H. 35E NBL	2BX-12
16	8+433	--	--	T.H. 35E NBL	2BX-12
17	247+50	--	--	RAMP 4	2X-12
18	249+65	--	--	RAMP 4	2X-12
19	251+80	--	--	RAMP 4	2X-12
20	253+85	--	--	RAMP 4	2X-12
21	255+15	--	--	RAMP 4	2X-12
22	1+405	--	--	T.H. 13	2X-12
23	1+373	--	--	T.H. 13	2X-12
24	7+500	--	--	LOOP 6	2X-12
25	7+575	--	--	LOOP 6	2X-12
26	7+645	--	--	LOOP 6	2X-12

PLACE LIGHTING UNITS 3 m BEHIND SHOULDER OR AS DIRECTED BY THE ENGINEER

