
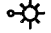

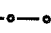
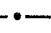
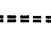
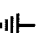
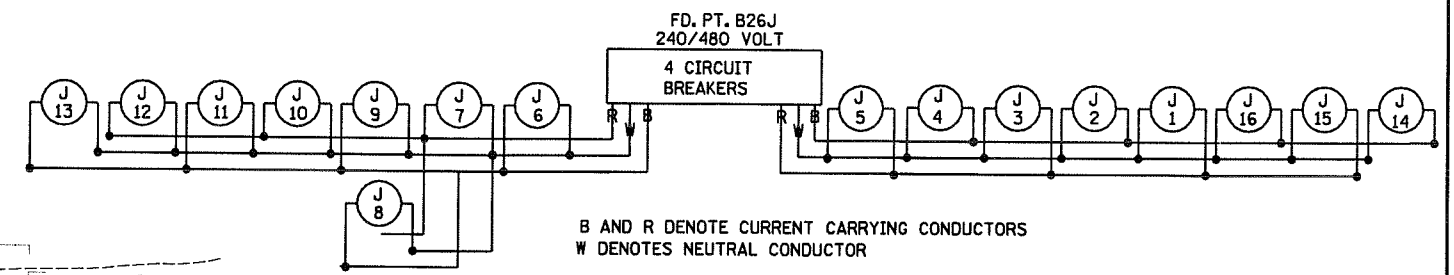


PLOTTED/REVISED: 11/24/2009

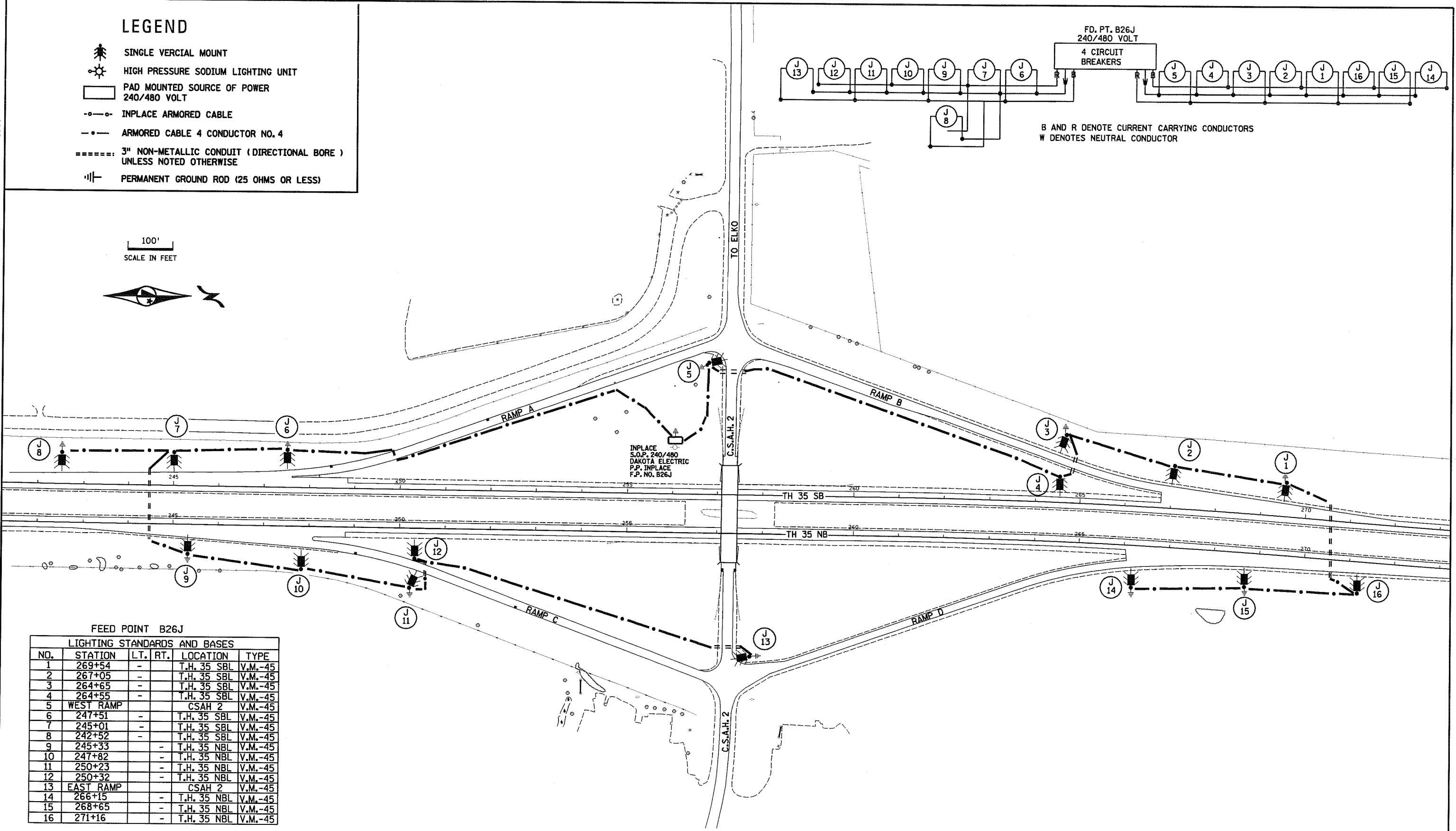
### LEGEND

-  SINGLE VERTICAL MOUNT
-  HIGH PRESSURE SODIUM LIGHTING UNIT
-  PAD MOUNTED SOURCE OF POWER  
240/480 VOLT
-  INPLACE ARMORED CABLE
-  ARMORED CABLE 4 CONDUCTOR NO. 4
-  3" NON-METALLIC CONDUIT (DIRECTIONAL BORE)  
UNLESS NOTED OTHERWISE
-  PERMANENT GROUND ROD (25 OHMS OR LESS)

100'  
SCALE IN FEET



B AND R DENOTE CURRENT CARRYING CONDUCTORS  
W DENOTES NEUTRAL CONDUCTOR



FEED POINT B26J

LIGHTING STANDARDS AND BASES					
NO.	STATION	LT.	RT.	LOCATION	TYPE
1	269+54	-	-	T.H. 35 SBL	V.M.-45
2	267+05	-	-	T.H. 35 SBL	V.M.-45
3	264+65	-	-	T.H. 35 SBL	V.M.-45
4	264+55	-	-	T.H. 35 SBL	V.M.-45
5	WEST RAMP	-	-	CSAH 2	V.M.-45
6	247+51	-	-	T.H. 35 SBL	V.M.-45
7	245+01	-	-	T.H. 35 SBL	V.M.-45
8	242+52	-	-	T.H. 35 SBL	V.M.-45
9	245+33	-	-	T.H. 35 NBL	V.M.-45
10	247+82	-	-	T.H. 35 NBL	V.M.-45
11	250+23	-	-	T.H. 35 NBL	V.M.-45
12	250+32	-	-	T.H. 35 NBL	V.M.-45
13	EAST RAMP	-	-	CSAH 2	V.M.-45
14	266+15	-	-	T.H. 35 NBL	V.M.-45
15	268+65	-	-	T.H. 35 NBL	V.M.-45
16	271+16	-	-	T.H. 35 NBL	V.M.-45

DISTRICT #: METRO  
PLOT NAME: B26C  
PATH & FILENAME: c:\Project\Wise\FW\_Working\Babil\Babil\202470\B26C.dgn

BY	DATE	REVISIONS	SYSTEM ID: 5189	FEEDPOINT: B26J	T.E.	LOCATION: T.H. 35 @ C.S.A.H. 2	<b>LIGHTING PLAN</b>
PB	11/23/09	AS-BUILT. RELOCATE CABLE.	METER ADDRESS: 26002 HWY 35				
DRAWN BY:			CKD BY:		DATE:		STATE PROJ. NO. 8825-303
			CERTIFIED BY: <i>Michael P. Selinsky</i> LICENSED PROFESSIONAL ENGINEER		LIC. NO. 19863		SHEET NO. 6 OF 7 SHEETS
					DATE:		