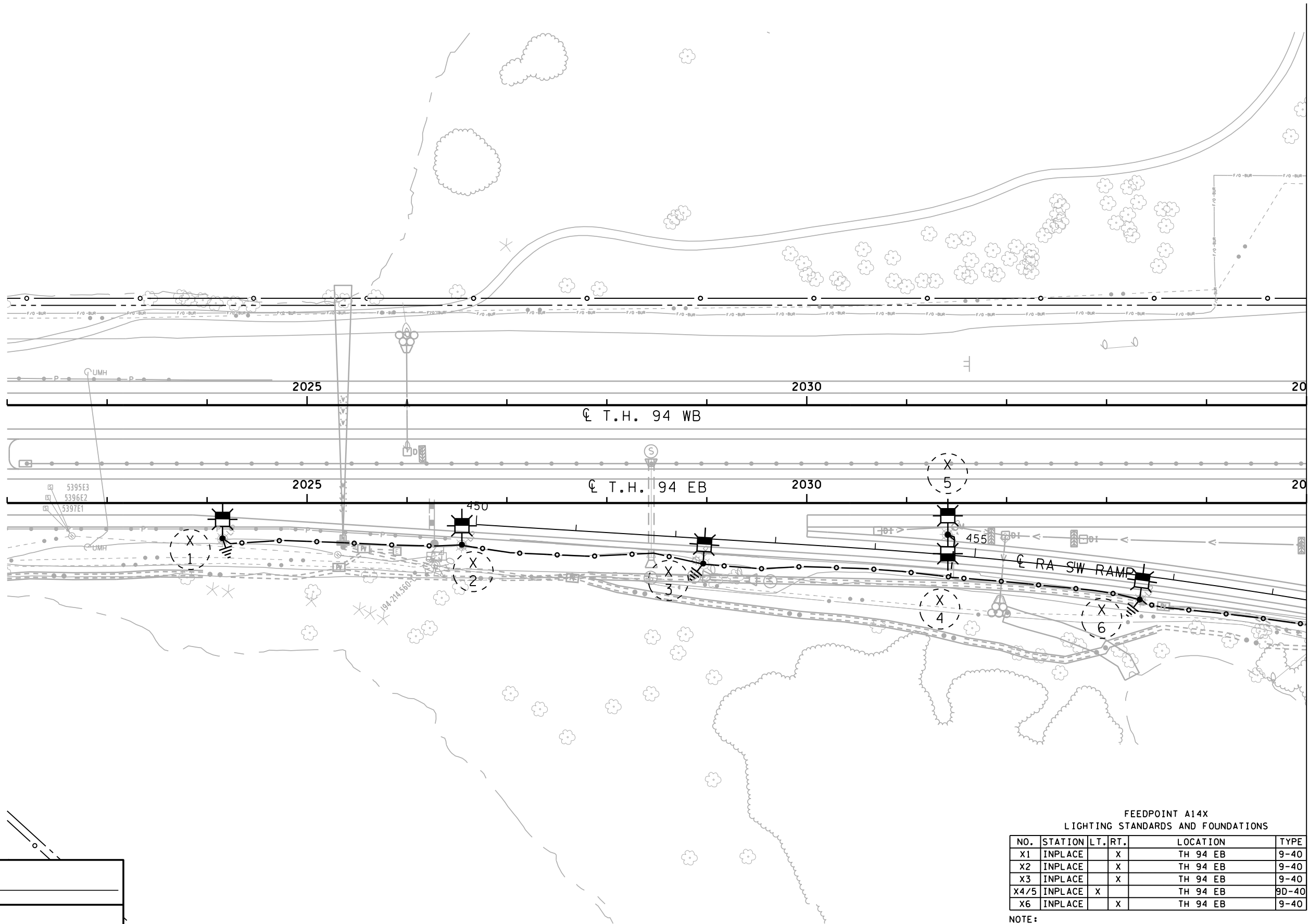
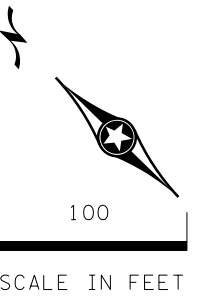


PLOTTED/REVISED: 23-NOV-2022

PATH & FILENAME: Minneapolis\_MN\01\_Projects\176174\_194\_MPLGR\_DB\4) DGN\_Sheets\Illumination\C0278097\_1133.dgn



FEEDPOINT A14X  
LIGHTING STANDARDS AND FOUNDATIONS

NO.	STATION	LT.	RT.	LOCATION	TYPE
X1	INPLACE		X	TH 94 EB	9-40
X2	INPLACE		X	TH 94 EB	9-40
X3	INPLACE		X	TH 94 EB	9-40
X4/5	INPLACE	X		TH 94 EB	9D-40
X6	INPLACE		X	TH 94 EB	9-40

NOTE:  
SEE SHEET 38 FOR WIRING DIAGRAM  
SEE SHEET 1 FOR LEGEND


NO	DATE	DWN	CKD	REVISIONS

**C.S. McCrossan** **Michael Baker**  
INTERNATIONAL

I HEREBY CERTIFY THAT THIS SHEET WAS PREPARED BY ME OR UNDER MY DIRECT SUPERVISION AND THAT I AM A DULY LICENSED PROFESSIONAL ENGINEER UNDER THE LAWS OF THE STATE OF MINNESOTA.

PRINT NAME: STEVEN STUART, PE  
SIGNATURE: \_\_\_\_\_  
DATE 12-24-2021 LICENSE #57479

LIGHTING PLANS  
STA 2022+00 TO STA 2035+00

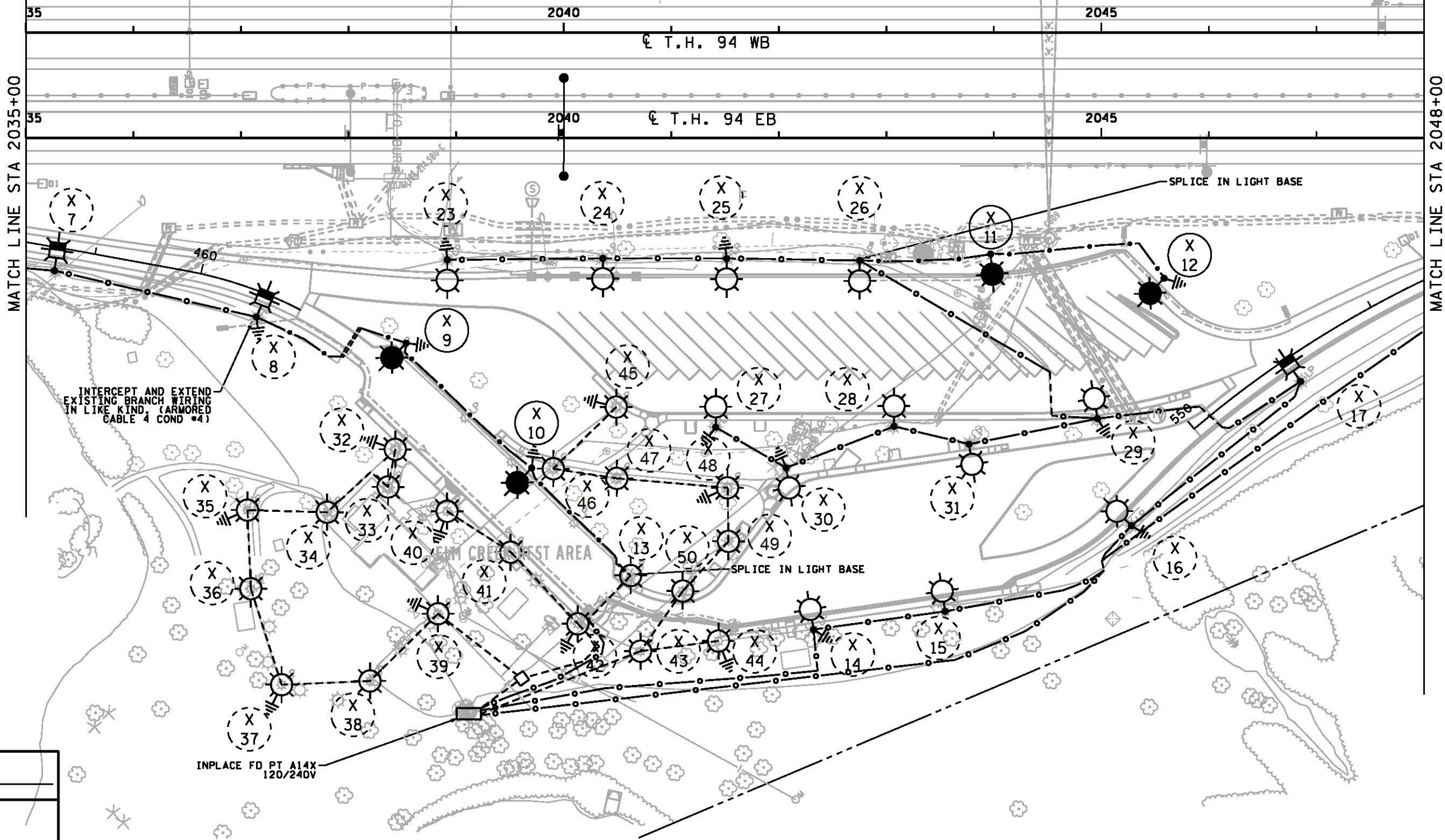
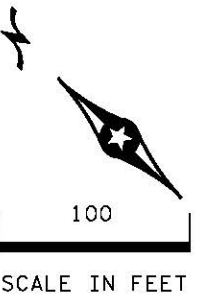
I-94 MAPLE GROVE TO ROGERS DB (S.P. 2780-97)  
SHEET NO. SL36 OF SL61 SHEETS

PLOTTED/REVISED: 23-NOV-2022

PATH & FILENAME: Minneapolis\_MN\01\_Projects\176174\_194\_MPLGR\_DB\4) DGN\_Sheets\Illumination\CD278097\_1134.dgn

FEEDPOINT A14X  
LIGHTING STANDARDS AND FOUNDATIONS

NO.	STATION	LT.	RT.	LOCATION	TYPE	NO.	STATION	LT.	RT.	LOCATION	TYPE	NO.	STATION	LT.	RT.	LOCATION	TYPE	NO.	STATION	LT.	RT.	LOCATION	TYPE
X7	INPLACE			ENTRANCE RAMP	9-40	X18	INPLACE			EXIT RAMP	9-40	X28	INPLACE			TRUCK PARKING AREA	9X-30	X39	INPLACE			WALK WAY (BLDG SIDE)	1X-15
X8	INPLACE			CAR PARKING ENTRANCE	9-40	X19	INPLACE			EXIT RAMP	9-40	X29	INPLACE			TRUCK PARKING EXIT	9X-30	X40	INPLACE			WALK WAY (CAR PARKING)	1X-15
X9	2038+54			CAR PARKING AREA	9X-30	X20	INPLACE			TH 94 EB	9-40	X30	INPLACE			CAR/TRAILER PARKING AREA	9X-30	X41	INPLACE			WALK WAY (CAR PARKING)	1X-15
X10	2039+71			CAR PARKING AREA	9X-30	X21	INPLACE			TH 94 EB	9-40	X31	INPLACE			CAR/TRAILER PARKING AREA	9X-30	X42	INPLACE			WALK WAY (CAR PARKING)	1X-15
X11	2043+97			CAR PARKING AREA	9X-30	X22	INPLACE			TH 94 EB	9-40	X32	INPLACE			WALKWAY (CAR PARKING)	1X-15	X43	INPLACE			WALK WAY (CAR PARKING)	1X-15
X12	2045+58			CAR PARKING AREA	9X-30	X23	INPLACE			TRUCK PARKING ENTRANCE	9X-30	X33	INPLACE			WALKWAY (BLDG FRONT)	1X-15	X44	INPLACE			WALK WAY (CAR/TRAIL)	1X-15
X13	INPLACE			CAR PARKING AREA	1X-15	X24	INPLACE			TRUCK PARKING AREA	9X-30	X34	INPLACE			WALKWAY (BLDG SIDE)	1X-15	X45	INPLACE			WALK WAY (TRUCK)	1X-15
X14	INPLACE			CAR/TRAILER PARKING AREA	9X-30	X24	INPLACE			TRUCK PARKING AREA	9X-30	X35	INPLACE			WALKWAY (BLDG BACK)	1X-15	X46	INPLACE			WALK WAY (PARKING)	1X-15
X15	INPLACE			CAR/TRAILER PARKING AREA	9X-30	X25	INPLACE			TRUCK PARKING AREA	9X-30	X36	INPLACE			WALKWAY (BLDG BACK)	1X-15	X47	INPLACE			WALK WAY (PARKING)	1X-15
X16	INPLACE			CAR EXIT RAMP	9X-30	X26	INPLACE			TRUCK PARKING AREA	9X-30	X37	INPLACE			WALKWAY (BLDG BACK)	1X-15	X48	INPLACE			WALK WAY (PARKING)	1X-15
X17	INPLACE			EXIT RAMP	9-40	X27	INPLACE			TRUCK PARKING AREA	9X-30	X38	INPLACE			WALKWAY (BLDG BACK)	1X-15	X49	INPLACE			WALK WAY (PARKING)	1X-15
																		X50	INPLACE			WALK WAY (PARKING)	1X-15



NO.	DATE	DWN	CKD	REVISIONS

**C.S. McCrossan** **Michael Baker**  
INTERNATIONAL

I HEREBY CERTIFY THAT THIS SHEET WAS PREPARED BY ME OR UNDER MY DIRECT SUPERVISION AND THAT I AM A DULY LICENSED PROFESSIONAL ENGINEER UNDER THE LAWS OF THE STATE OF MINNESOTA.

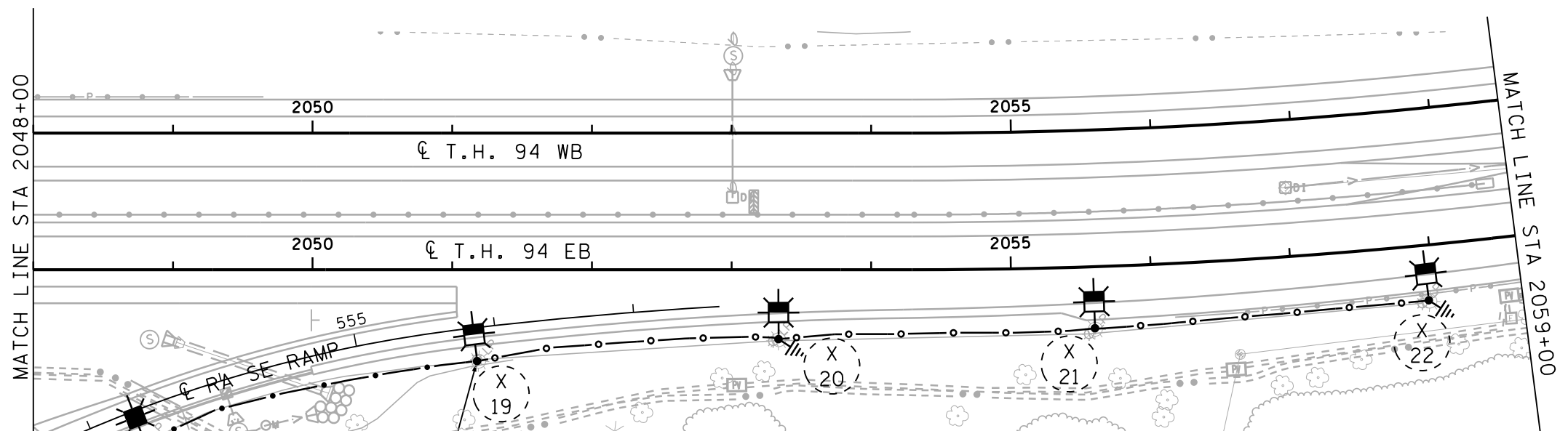
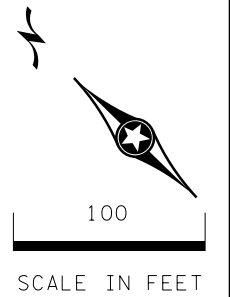
PRINT NAME: STEVEN STUART, PE  
SIGNATURE: \_\_\_\_\_  
DATE 12-24-2021 LICENSE #57479

LIGHTING PLANS  
STA 2035+00 TO STA 2048+00

I-94 MAPLE GROVE TO ROGERS DB (S.P. 2780-97)  
SHEET NO. SL37 OF SL61 SHEETS

PLOTTED/REVISED: 23-NOV-2022

PATH & FILENAME: Minneapolis\_MN\01\_Projects\176174\_194\_MPLGR\_DB\4) DGN\_Sheets\Illumination\C0278097\_1135.dgn

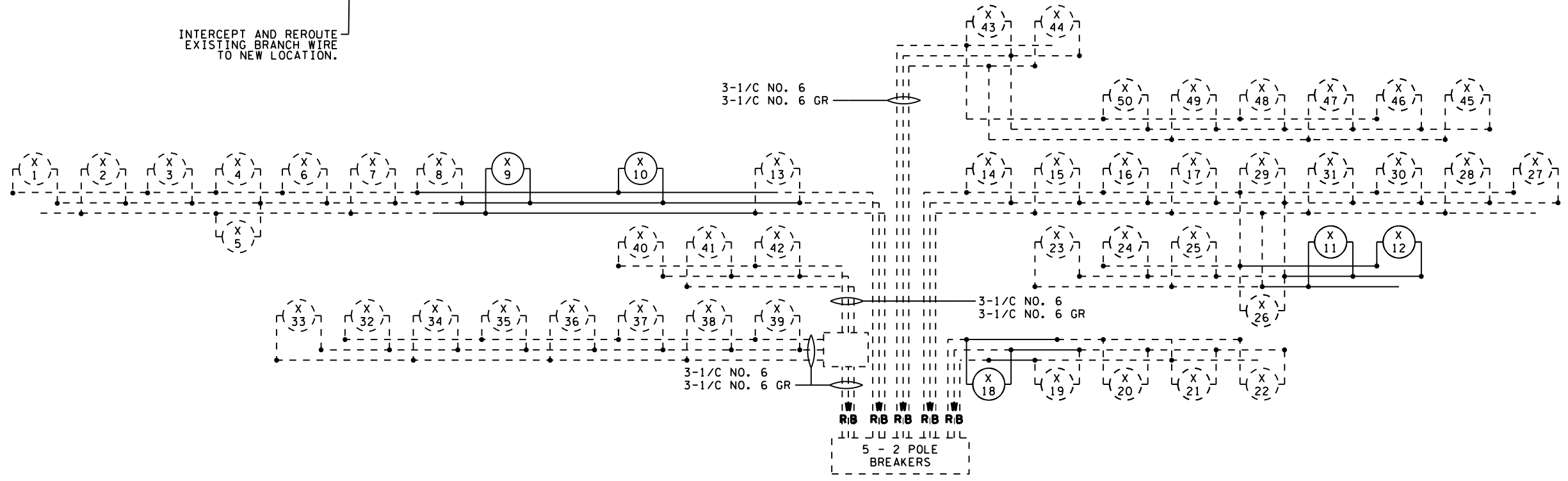


FEEDPOINT A14X  
LIGHTING STANDARDS AND FOUNDATIONS

NO.	STATION	LT.	RT.	LOCATION	TYPE
X18	553+33		X	RA SE RAMP	9-40
X19	INPLACE		X	RA SE RAMP	9-40
X20	INPLACE		X	RA SE RAMP	9-40
X21	INPLACE		X	RA SE RAMP	9-40
X22	INPLACE		X	RA SE RAMP	9-40

NOTE:  
SEE SHEET 1 FOR LEGEND

INTERCEPT AND REROUTE  
EXISTING BRANCH WIRE  
TO NEW LOCATION.



120/240 VOLT  
INPLACE FD. PT. A14X  
W DENOTES NEUTRAL CONDUCTOR  
B AND R DENOTE CURRENT CARRYING CONDUCTORS


NO	DATE	DWN	CKD	REVISIONS

**C.S. McCrossan** **Michael Baker**  
INTERNATIONAL

I HEREBY CERTIFY THAT THIS SHEET WAS PREPARED BY ME OR UNDER MY DIRECT SUPERVISION AND THAT I AM A DULY LICENSED PROFESSIONAL ENGINEER UNDER THE LAWS OF THE STATE OF MINNESOTA.

PRINT NAME: STEVEN STUART, PE  
SIGNATURE: \_\_\_\_\_  
DATE 12-24-2021 LICENSE #57479

LIGHTING PLANS  
STA 2048+00 TO STA 2059+00

I-94 MAPLE GROVE TO ROGERS DB (S.P. 2780-97)  
SHEET NO. SL38 OF SL61 SHEETS