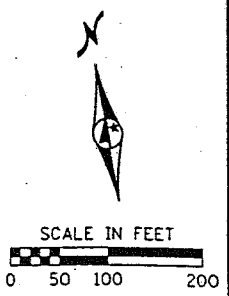
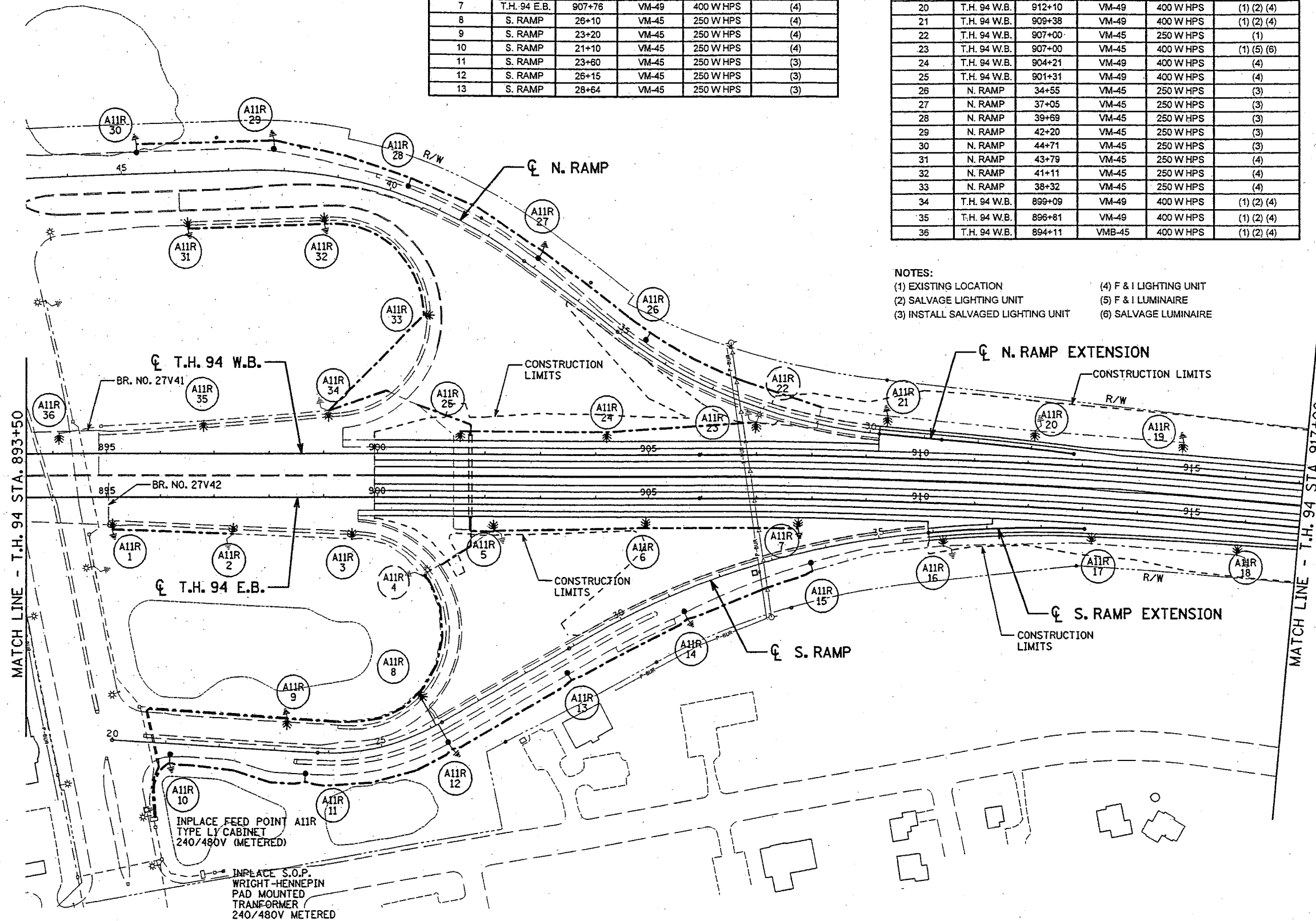


LIGHTING STANDARDS AND BASES					
NO	LOCATION	STATIONS	POLE TYPE	FIXTURE	NOTES
FOR FEED POINT A11R					
1	T.H. 94 E.B.	895+10	VM-49	400 W HPS	(4)
2	T.H. 94 E.B.	897+35	VM-49	400 W HPS	(1) (2) (4)
3	T.H. 94 E.B.	899+53	VM-49	400 W HPS	(1) (2) (4)
4	T.H. 94 E.B.	900+53	VM-45	250 W HPS	(1)
5	T.H. 94 E.B.	902+15	VM-49	400 W HPS	(1) (2) (4)
6	T.H. 94 E.B.	904+00	VM-49	400 W HPS	(4)
7	T.H. 94 E.B.	907+76	VM-49	400 W HPS	(4)
8	S. RAMP	26+10	VM-45	250 W HPS	(4)
9	S. RAMP	23+20	VM-45	250 W HPS	(4)
10	S. RAMP	21+10	VM-45	250 W HPS	(4)
11	S. RAMP	23+60	VM-45	250 W HPS	(3)
12	S. RAMP	26+15	VM-45	250 W HPS	(3)
13	S. RAMP	28+64	VM-45	250 W HPS	(3)

LIGHTING STANDARDS AND BASES					
NO	LOCATION	STATIONS	POLE TYPE	FIXTURE	NOTES
FOR FEED POINT A11R					
14	S. RAMP	31+15	VM-45	250 W HPS	(3)
15	S. RAMP	33+66	VM-45	250 W HPS	(3)
16	T.H. 94 E.B.	910+46	VM-49	400 W HPS	(1) (2) (4)
17	T.H. 94 E.B.	913+20	VM-49	400 W HPS	(1) (2) (4)
18	T.H. 94 E.B.	915+90	VM-49	400 W HPS	(1) (2) (4)
19	T.H. 94 W.B.	914+82	VM-49	400 W HPS	(4)
20	T.H. 94 W.B.	912+10	VM-49	400 W HPS	(1) (2) (4)
21	T.H. 94 W.B.	909+38	VM-49	400 W HPS	(1) (2) (4)
22	T.H. 94 W.B.	907+00	VM-45	250 W HPS	(1)
23	T.H. 94 W.B.	907+00	VM-45	400 W HPS	(1) (5) (6)
24	T.H. 94 W.B.	904+21	VM-49	400 W HPS	(4)
25	T.H. 94 W.B.	901+31	VM-49	400 W HPS	(4)
26	N. RAMP	34+55	VM-45	250 W HPS	(3)
27	N. RAMP	37+05	VM-45	250 W HPS	(3)
28	N. RAMP	39+69	VM-45	250 W HPS	(3)
29	N. RAMP	42+20	VM-45	250 W HPS	(3)
30	N. RAMP	44+71	VM-45	250 W HPS	(3)
31	N. RAMP	43+79	VM-45	250 W HPS	(4)
32	N. RAMP	41+11	VM-45	250 W HPS	(4)
33	N. RAMP	38+32	VM-45	250 W HPS	(4)
34	T.H. 94 W.B.	899+09	VM-49	400 W HPS	(1) (2) (4)
35	T.H. 94 W.B.	896+81	VM-49	400 W HPS	(1) (2) (4)
36	T.H. 94 W.B.	894+11	VMB-45	400 W HPS	(1) (2) (4)

NOTES:  
 (1) EXISTING LOCATION  
 (2) SALVAGE LIGHTING UNIT  
 (3) INSTALL SALVAGED LIGHTING UNIT  
 (4) F & I LIGHTING UNIT  
 (5) F & I LUMINAIRE  
 (6) SALVAGE LUMINAIRE



DATE: 01/02/2003 TIME: 02:59:01 PM  
 FILENAME: k:\g-m\mmdot\225701\hwy-brdg\draw\ings\plan\c2786117.jtb

