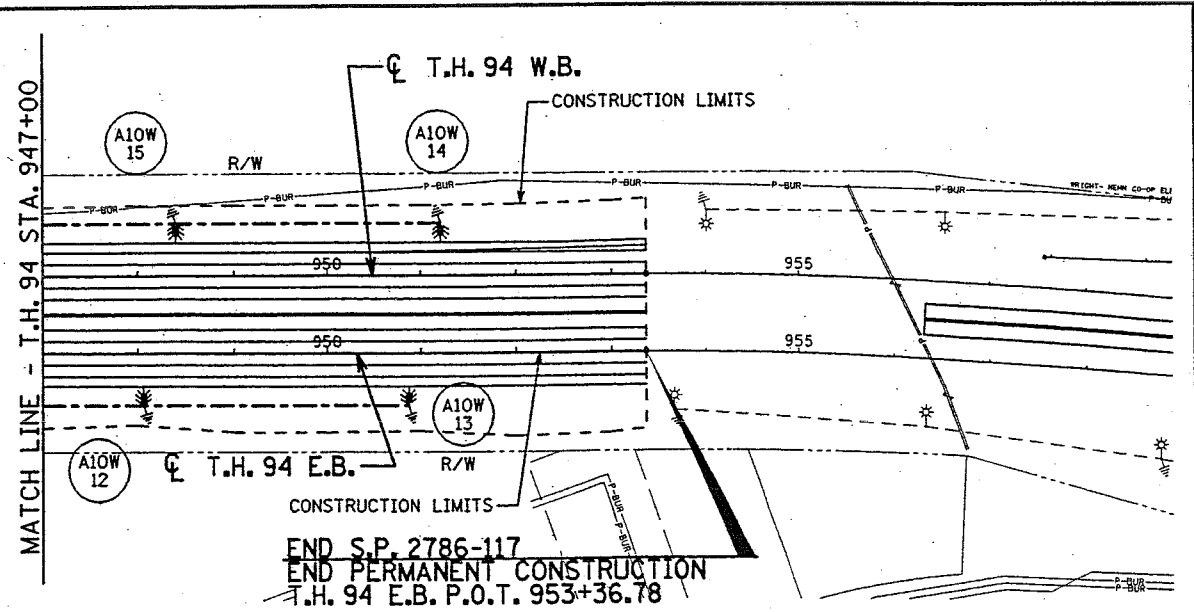
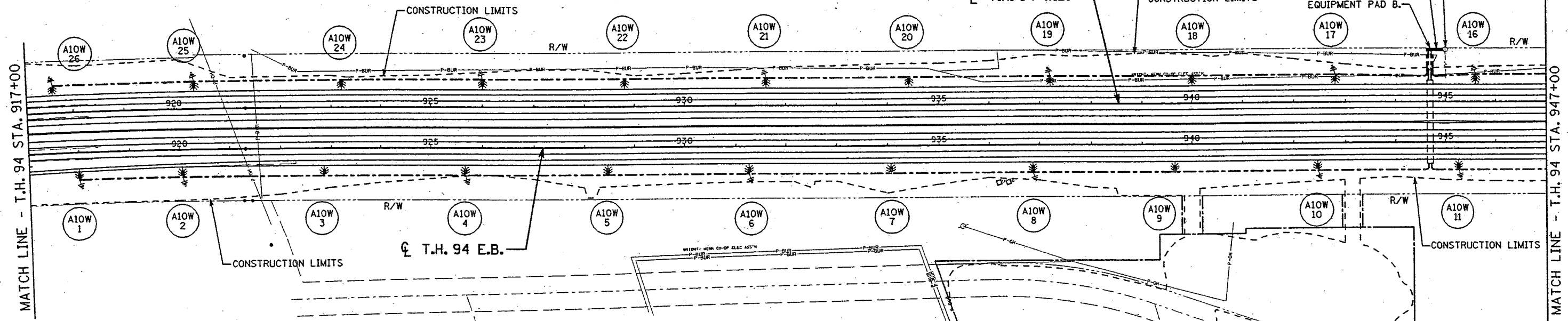
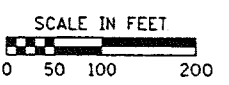
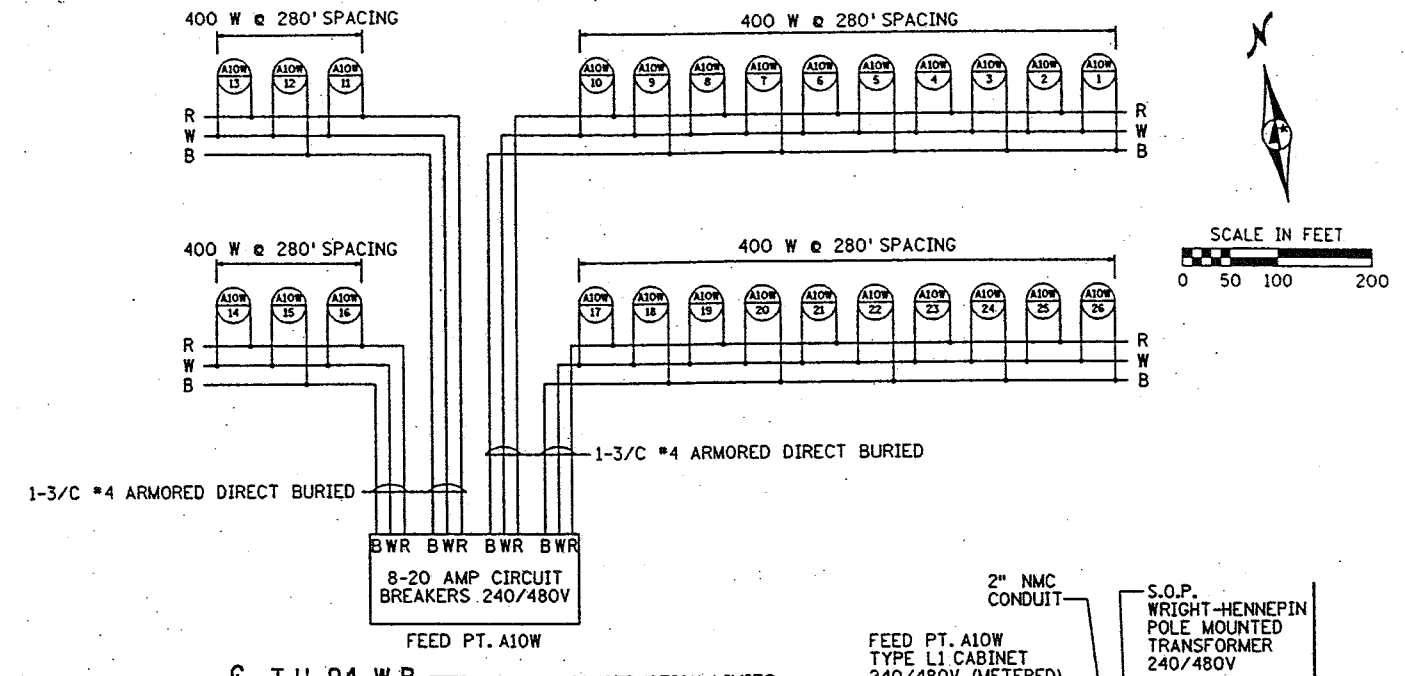


**LIGHTING STANDARDS AND BASES**

NO	LOCATION	STATIONS	POLE TYPE	FIXTURE
FOR FEED POINT A10W				
1	T.H. 94 E.B.	917+98	VM-49	400 W HPS
2	T.H. 94 E.B.	920+07	VM-49	400 W HPS
3	T.H. 94 E.B.	922+87	VM-49	400 W HPS
4	T.H. 94 E.B.	925+67	VM-49	400 W HPS
5	T.H. 94 E.B.	928+47	VM-49	400 W HPS
6	T.H. 94 E.B.	931+27	VM-49	400 W HPS
7	T.H. 94 E.B.	934+07	VM-49	400 W HPS
8	T.H. 94 E.B.	936+87	VM-49	400 W HPS
9	T.H. 94 E.B.	939+67	VM-49	400 W HPS
10	T.H. 94 E.B.	942+47	VM-49	400 W HPS
11	T.H. 94 E.B.	945+27	VM-49	400 W HPS
12	T.H. 94 E.B.	948+07	VM-49	400 W HPS
13	T.H. 94 E.B.	950+87	VM-49	400 W HPS

**LIGHTING STANDARDS AND BASES**

NO	LOCATION	STATIONS	POLE TYPE	FIXTURE
FOR FEED POINT A10W				
14	T.H. 94 W.B.	951+21	VM-49	400 W HPS
15	T.H. 94 W.B.	948+41	VM-49	400 W HPS
16	T.H. 94 W.B.	945+61	VM-49	400 W HPS
17	T.H. 94 W.B.	942+81	VM-49	400 W HPS
18	T.H. 94 W.B.	940+01	VM-49	400 W HPS
19	T.H. 94 W.B.	937+21	VM-49	400 W HPS
20	T.H. 94 W.B.	934+41	VM-49	400 W HPS
21	T.H. 94 W.B.	931+61	VM-49	400 W HPS
22	T.H. 94 W.B.	928+81	VM-49	400 W HPS
23	T.H. 94 W.B.	926+01	VM-49	400 W HPS
24	T.H. 94 W.B.	923+21	VM-49	400 W HPS
25	T.H. 94 W.B.	920+41	VM-49	400 W HPS
26	T.H. 94 W.B.	917+61	VM-49	400 W HPS



DATE: 12/04/2002 TIME: 08:03:21 AM  
FILENAME: k:\g-m\mnd\225701\mwy-brdg\drawings\plan\c278617.jtc

DRAWN BY: SP  
CHECKED BY: GAR

CERTIFIED BY *Gerald A. Ramaker* LIC. NO. 22469 DATE 12/5/02  
LICENSED PROFESSIONAL ENGINEER

**TKDA**  
TOLTZ, KING, DUVALL, ANDERSON  
AND ASSOCIATES, INCORPORATED  
ENGINEERS-ARCHITECTS-PLANNERS SAINT PAUL, MINNESOTA

LIGHTING PLANS  
T.H. 94 STA. 917+00 TO STA. 947+00

STATE PROJ. NO. 2786-117 (T.H. 94)  
Sheet No. 255 of 325 Sheets