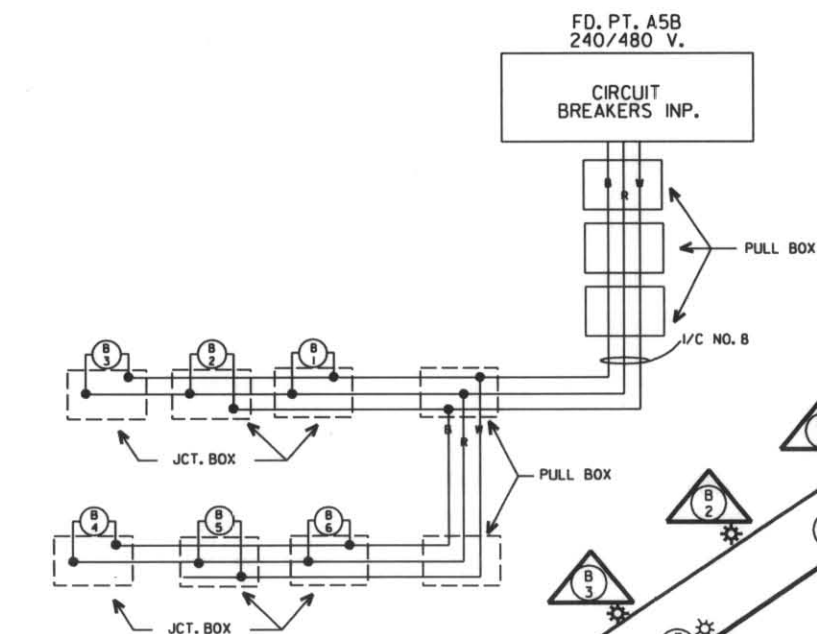


B AND R DENOTE CURRENT CARRYING CONDUCTORS
W DENOTES NEUTRAL CONDUCTOR



PAD MOUNTED SOURCE OF POWER IN PLACE, FD. PT. A5F, 240/480 V. SERVICE PANEL SECONDARY TYPE B FOR NAVIGATION LIGHTS. 2 R.S.C. & 3 - I/C NO. 4 TO INP. XCEL P.P. FD. PT. A5B, 120/240 V.

T.H. 94 W.B.
T.H. 94 E.B.

NOTE: NAVIGATION LIGHTS ARE METERED & NOT PART OF THIS EXHIBIT
NOTE: THESE LIGHTS ARE MAINTAINED BY MCTO & NOT PART OF THIS EXHIBIT

METER ADDRESS: F.P. A5F - 910 S.E. ERIE ST. F.P. A5E - 49 27th AVE. S.E.

CERTIFIED BY *Sean Dehn*
LICENSED PROFESSIONAL ENGINEER

FD. PT. A5F

LIGHTING STANDARDS AND BASES					
NO.	STATION	LT.	RT.	LOCATION	TYPE
(1)	1	665 + 25		T.H. 94 MEDIAN	6BD - 40
(1)	10				
(1)	2	667 + 55		T.H. 94 MEDIAN	6BD - 40
(1)	9				
(1)	3	669 + 70		T.H. 94 MEDIAN	6BD - 40
(1)	8				
(2)	4	AS SHOWN		T.H. 94 E.B.L.	L
(2)	7	AS SHOWN		T.H. 94 W.B.L.	L
(1)	5	149 + 20		T.H. 94 MEDIAN	6BD - 49
(1)	6				
(2)	11	AS SHOWN		RAMP B	L
(2)	12	AS SHOWN		RAMP B	L
(3)	13	155 + 70		RAMP B	6 - 40
(3)	14	153 + 35		RAMP B	6BD - 40
(3)	15				
(3)	16	151 + 00		RAMP B	6BD - 40
(3)	17				

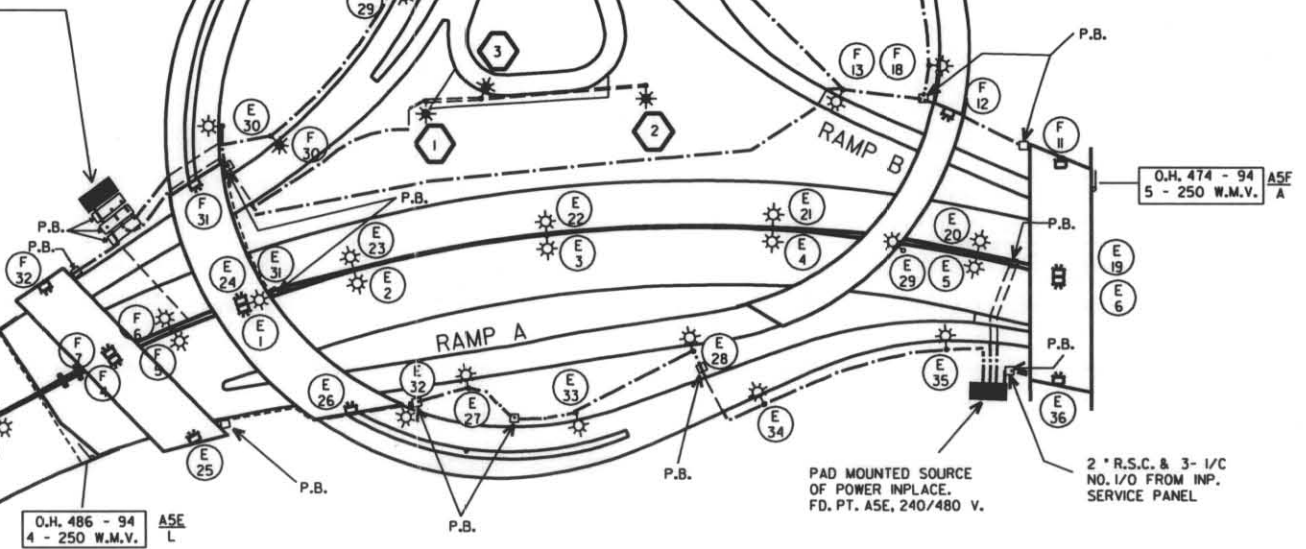
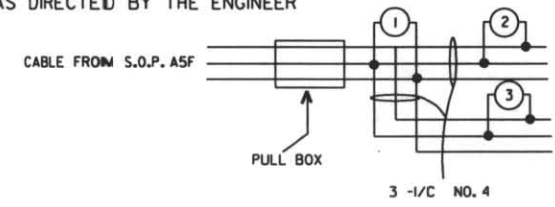
FD. PT. A5F

LIGHTING STANDARDS AND BASES					
NO.	STATION	LT.	RT.	LOCATION	TYPE
(3)	18	158 + 35		RAMP A	6 - 40
(3)	19	160 + 50		RAMP A	
(3)	20	162 + 45		RAMP A	
(3)	21	164 + 15		RAMP A	
(3)	22	165 + 75		RAMP A	
(3)	23	10 + 30		HURON BLVD	
(3)	24	12 + 00		HURON BLVD	
(3)	25	11 + 15		HURON BLVD	
(3)	26	140 + 35		RAMP D	
(3)	27	142 + 10		RAMP D	
(3)	28	155 + 15		RAMP C	
(3)	29	153 + 15		RAMP C	
(3)	30	151 + 15		RAMP C	6 - 40
(2)	31	AS SHOWN		RAMP C	L
(2)	32	AS SHOWN		RAMP C	L
(3)	33	143 + 85		RAMP D	6 - 40
(3)	34	145 + 70		RAMP D	6 - 40

(1) 400 WATT HIGH PRESSURE SODIUM LIGHTING UNITS
(2) 200 WATT HIGH PRESSURE SODIUM UNDERPASS LIGHTS
(3) 200 WATT HIGH PRESSURE SODIUM LIGHTING UNITS

LIGHTING STANDARDS AND BASES					
NO.	STATION	LT.	RT.	LOCATION	TYPE
1	14 + 60			BUS RAMP	PT
2	12 + 40			BUS RAMP	6X - 30
3	22 + 40			BUS RAMP	PT

LOCATE LIGHTING UNIT 9 BEHIND THE CURB OR AS DIRECTED BY THE ENGINEER



SHEET TOTAL

- 16 - 400 WATT HIGH PRESSURE SODIUM LIGHTING UNITS
- 29 - 200 WATT HIGH PRESSURE SODIUM LIGHTING UNITS
- 13 - 200 WATT HIGH PRESSURE SODIUM UNDERPASS LIGHTS
- 9 - 250 WATT MERCURY VAPOR SIGN LIGHTS

EXHIBIT 96F
DARTMOUTH BRIDGE
T.H. 94 & HURON BLVD.
IN MINNEAPOLIS
XCEL ENERGY
METERED

FD. PT. A5F, A5E

REFER TO PROJECT SP. 2781 - 289 (T.H. 94 = 392)

Sheet No. 1 of 2 Sheets