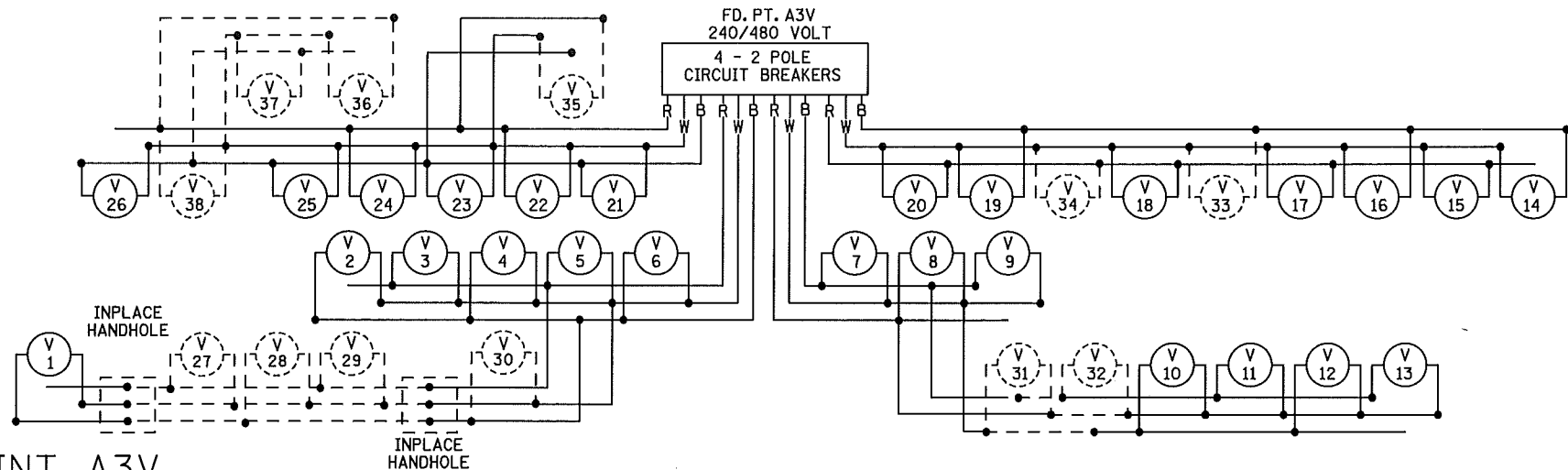


SEE LEGEND SHEET 202

DASHED LINES INDICATE INPLACE ITEMS
 B AND R DENOTE CURRENT CARRYING CONDUCTORS
 W DENOTES NEUTRAL CONDUCTOR

FEEDPOINT A3V

LIGHTING STANDARDS AND BASES						
NO.	STA.	ALI	LT.	RT.	LOCATION	WATTAGE
1	232+50	MED TH94			TH94EB	9-49
2	235+15					
3	237+75					
4	240+40					
5	243+00					
6	245+55					
7	247+75					
8	250+20					
9	252+65					
10	255+10					
11	257+50					
12	259+95					
13	262+45				TH94EB	
14	262+50				TH94WB	
15	260+00					
16	257+55					
17	255+15					
18	252+70					
19	250+25					
20	247+80					
21	245+65					
22	243+00					
23	240+40					
24	237+75					
25	235+10					
26	232+50	MED TH94			TH94WB	9-49



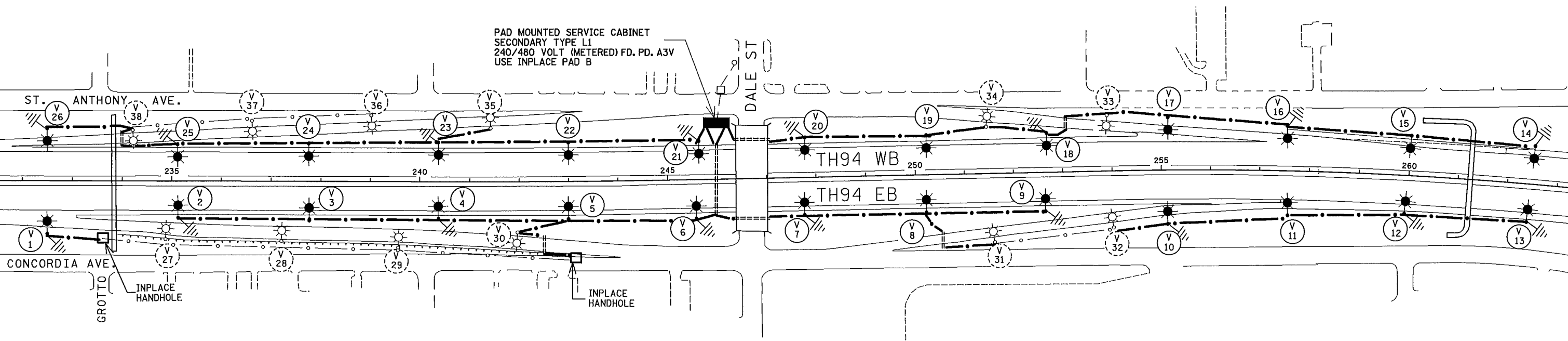
FEEDPOINT A3V

LIGHTING STANDARDS AND BASES						
NO.	STA.	ALI	LT.	RT.	LOCATION	WATTAGE
27	INPLACE				AS SHOWN	6-40
28						6-40
29						6-40
30						9-40
31						
32						
33						
34						
35						9-40
36						6-40
37						6-40
38	INPLACE				AS SHOWN	9-40

① RENUMBER INPLACE POLES - F&I 250 WHPS LUMINAIRE



PAD MOUNTED SERVICE CABINET
 SECONDARY TYPE L1
 240/480 VOLT (METERED) FD. PD. A3V
 USE INPLACE PAD B



AS-BUILT 2010

FEEDPOINTS A3V

BY: EK	DATE: 08/2010	REVISIONS: CABLE RUN V19 TO V34 TO V18	SYSTEM ID: FEEDPOINT: A3V	T.E. LOCATION: TH94 at DALE	STATE PROJ. NO. 6287-187 (T.H.94)	SHEET NO. 207 OF 294 SHEETS
DRAWN BY: NS CKD BY: GB DATE:			METER ADDRESS: 619 St. ANTHONY AVE. St. PAUL 55103			
			CERTIFIED BY: <i>Michael P. Lubensky</i> LIC. NO. 19863 DATE: 10/26/2010		LIGHTING PLAN	

PLOTTED/REVISED: 10/26/2010

DISTRICT #: METRO
 I/PLOT NAME: 6282187_01.tif
 PATH & FILENAME: IP_PWP-dll36603\6282187_01.tif.dgn