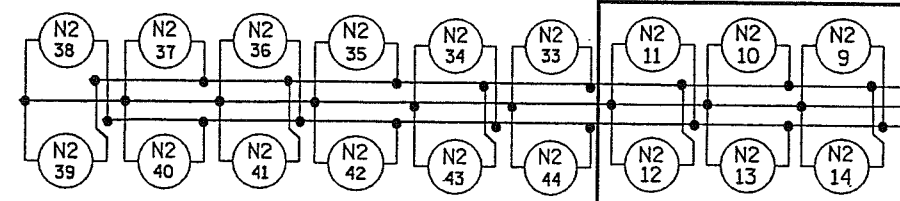
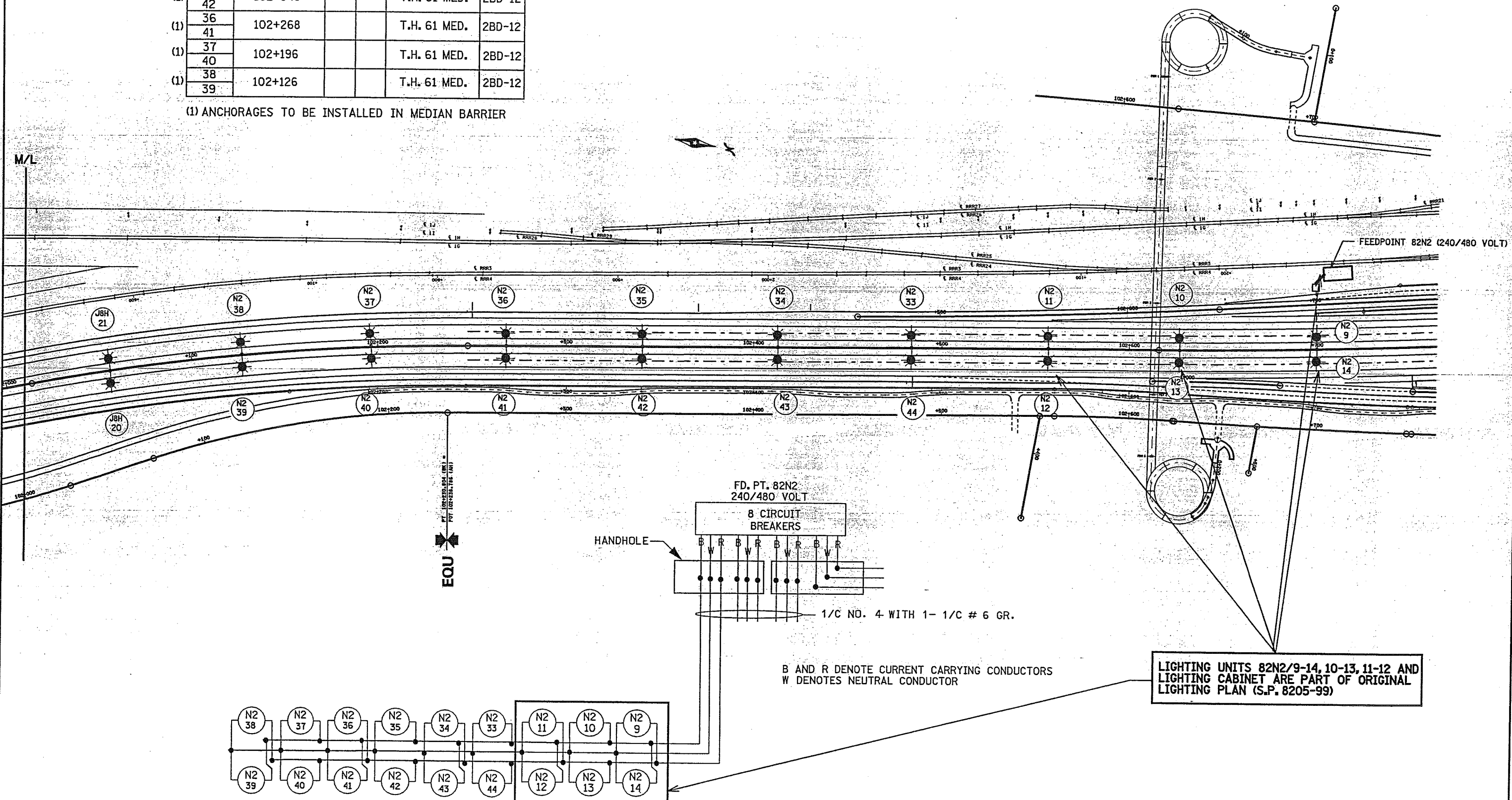


FEEDPOINT 82N2

LIGHTING STANDARDS AND BASES					
NO.	STATION	LT.	RT.	LOCATION	TYPE
(1) 33	102+484			T.H. 61 MED.	2BD-12
44					
(1) 34	102+412			T.H. 61 MED.	2BD-12
43					
(1) 35	102+340			T.H. 61 MED.	2BD-12
42					
(1) 36	102+268			T.H. 61 MED.	2BD-12
41					
(1) 37	102+196			T.H. 61 MED.	2BD-12
40					
(1) 38	102+126			T.H. 61 MED.	2BD-12
39					

(1) ANCHORAGES TO BE INSTALLED IN MEDIAN BARRIER



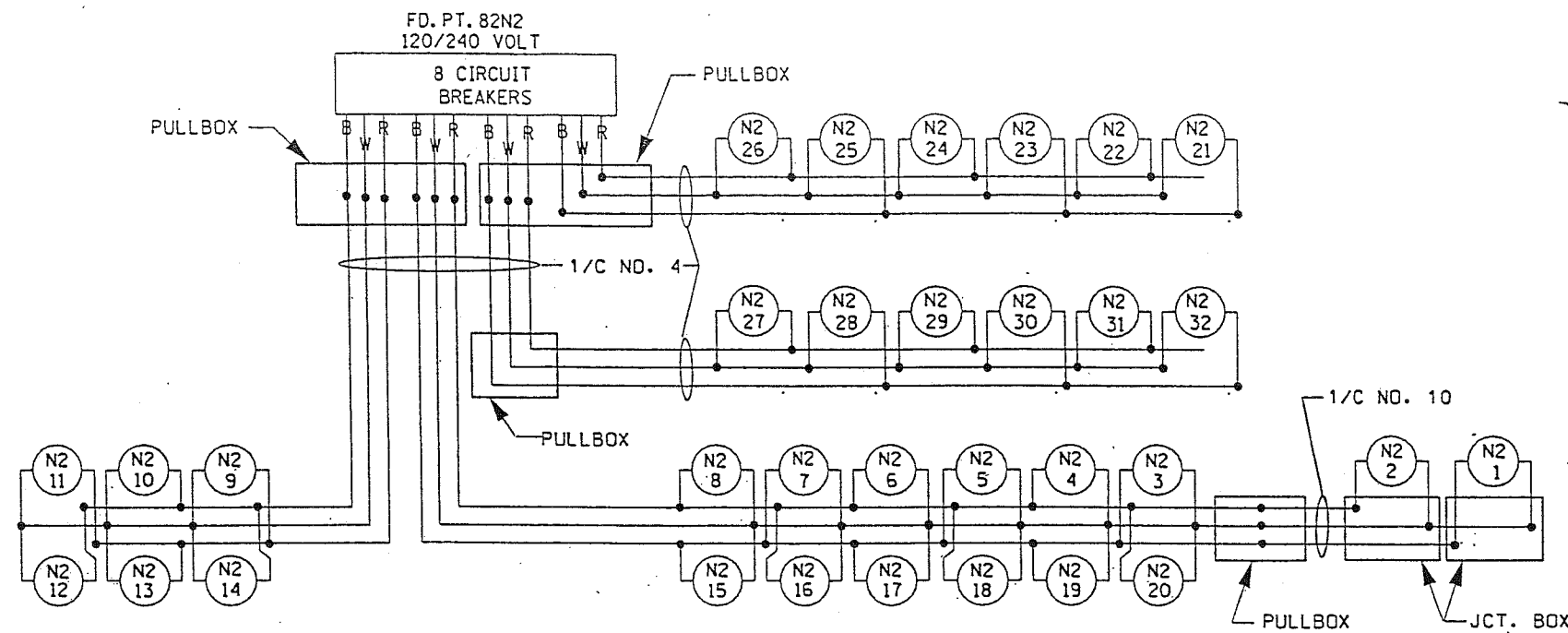
SCALE
100 m

CERTIFIED BY *John J. Kienitz* LICENSED PROFESSIONAL ENGINEER LIC. NO. 23084

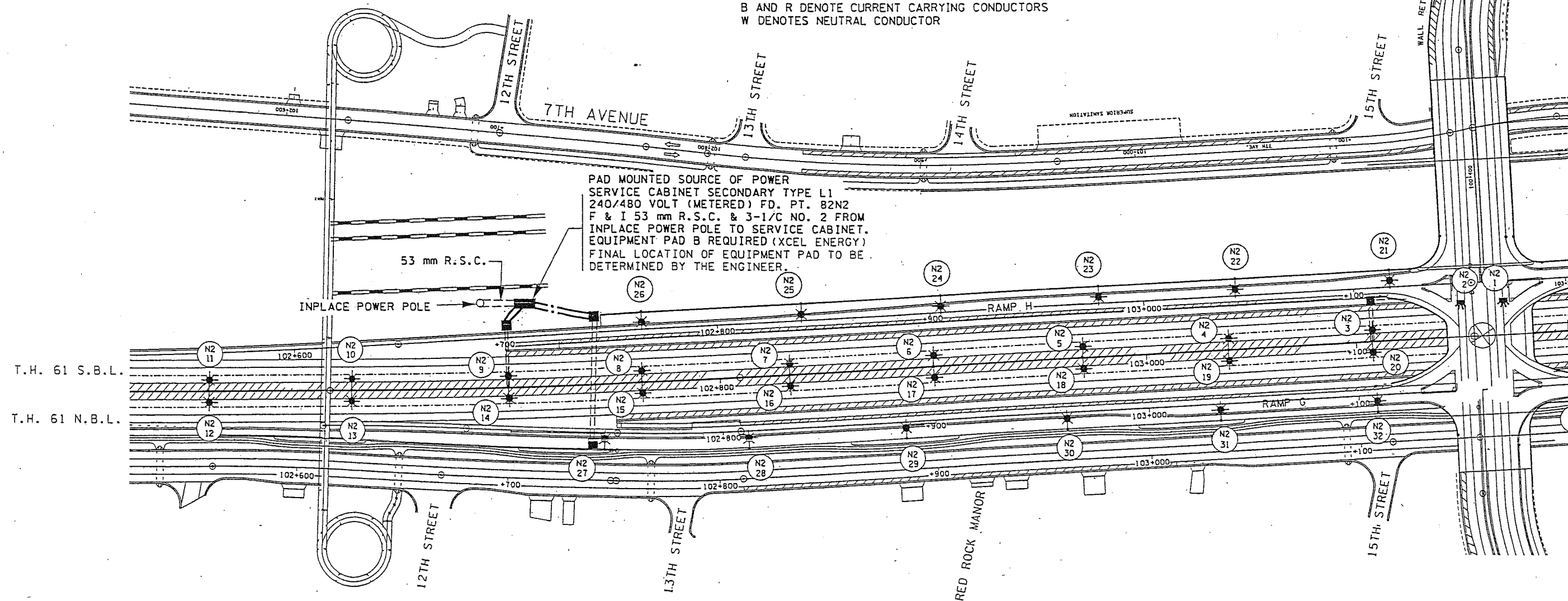
State Proj. No. 8205-99 (T.H. 61)

LEGEND

- PAD MOUNTED SOURCE OF POWER, VOLTAGE AS INDICATED ON PLAN.
- 250 WATT HIGH PRESSURE SODIUM LIGHTING UNIT
- 250 WATT HIGH PRESSURE SODIUM TWIN LIGHTING UNIT
- 250 WATT HIGH PRESSURE SODIUM UNDERPASS LIGHTING UNIT
- ARMORED CABLE 3 CONDUCTOR NO. 4
- PULLBOX
- 78 mm RIGID STEEL CONDUIT UNLESS OTHERWISE NOTED
- FUTURE LIGHTING UNIT



B AND R DENOTE CURRENT CARRYING CONDUCTORS
W DENOTES NEUTRAL CONDUCTOR



PAD MOUNTED SOURCE OF POWER
SERVICE CABINET SECONDARY TYPE L1
240/480 VOLT (METERED) FD. PT. 82N2
F & I 53 mm R.S.C. & 3-1/C NO. 2 FROM
INPLACE POWER POLE TO SERVICE CABINET.
EQUIPMENT PAD B REQUIRED (XCEL ENERGY)
FINAL LOCATION OF EQUIPMENT PAD TO BE
DETERMINED BY THE ENGINEER.

PLOT: DATE / TIME
12/13/01 8:00AM

FILE NAME
820599.L1T

PERMANENT LIGHTING
SHEETS 4 - 15

FD. PT. 82N1

LIGHTING STANDARDS AND BASES					
NO.	STATION	LT.	RT.	LOCATION	TYPE
1 26	FUTURE			T.H. 61 NBL	2BD-12
2 25	FUTURE			T.H. 61 NBL	2BD-12
3 24	FUTURE			T.H. 61 MED.	2BD-12
4 23	FUTURE			T.H. 61 MED.	2BD-12
5 22	103+667			T.H. 61 MED.	2BD-12
6 21	103+600			T.H. 61 MED.	2BD-12
7 20	103+533			T.H. 61 MED.	2BD-12
8 19	103+466			T.H. 61 MED.	2BD-12
9 18	103+399			T.H. 61 MED.	2BD-12
10 17	103+332			T.H. 61 MED.	2BD-12
11 16	103+265			T.H. 61 MED.	2BD-12
12 15	103+198			T.H. 61 MED.	2BD-12
13	103+150		-	T.H. 61 NBL	L
14	103+172		-	T.H. 61 NBL	L
(1) 27	103+554.2	-		RAMP E	2B-12
(1) 28	103+479.8	-		RAMP E	2B-12
(1) 29	103+405.4	-		RAMP E	2B-12
(1) 30	103+340.3	-		RAMP E	2B-12
(1) 31	103+275.2	-		RAMP E	2B-12
(1) 32	103+199.2	-		RAMP E	2B-12
(1) 33	103+199.7		-	RAMP F	2B-12
(1) 34	103+265.9		-	RAMP F	2B-12
(1) 35	103+340.3		-	RAMP F	2B-12
(1) 36	103+405.4		-	RAMP F	2B-12
(1) 37	103+479.4		-	RAMP F	2B-12

(1) SEE PART E, SERIES RW FOR ANCHORAGE
DETAIL IN RETAINING WALL

FD. PT. 82N2

LIGHTING STANDARDS AND BASES					
NO.	STATION	LT.	RT.	LOCATION	TYPE
1	103+172			T.H. 61 S.B.	L
2	103+150			T.H. 61 S.B.	L
3 20	103+108			T.H. 61 MED.	2BD-12
4 19	103+039			T.H. 61 MED.	2BD-12
5 18	102+969			T.H. 61 MED.	2BD-12
6 17	102+901			T.H. 61 MED.	2BD-12
7 16	102+832			T.H. 61 MED.	2BD-12
8 15	102+763			T.H. 61 MED.	2BD-12
9 14	102+694			T.H. 61 MED.	2BD-12
10 13	102+625			T.H. 61 MED.	2BD-12
11 12	102+556			T.H. 61 MED.	2BD-12
(1) 21	103+117.3	-		RAMP H	2B-12
(1) 22	103+043.8	-		RAMP H	2B-12
(1) 23	102+978.7	-		RAMP H	2B-12
(1) 24	102+904.3	-		RAMP H	2B-12
(1) 25	102+839.2	-		RAMP H	2B-12
(1) 26	102+764.8	-		RAMP H	2B-12
(1) 27	102+743.5		-	RAMP G	2B-12
(1) 28	102+811.3		-	RAMP G	2B-12
(1) 29	102+885.7		-	RAMP G	2B-12
(1) 30	102+960.1		-	RAMP G	2B-12
(1) 31	103+034.5		-	RAMP G	2B-12
(1) 32	103+108.9		-	RAMP G	2B-12

(1) SEE PART E, SERIES RW FOR ANCHORAGE
DETAIL IN RETAINING WALL

PLOT: DATE / TIME
12/13/01 8:00AM

FILE NAME
820599.LIT

PERMANENT LIGHTING
SHEETS 4 - 15