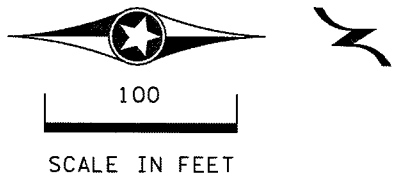
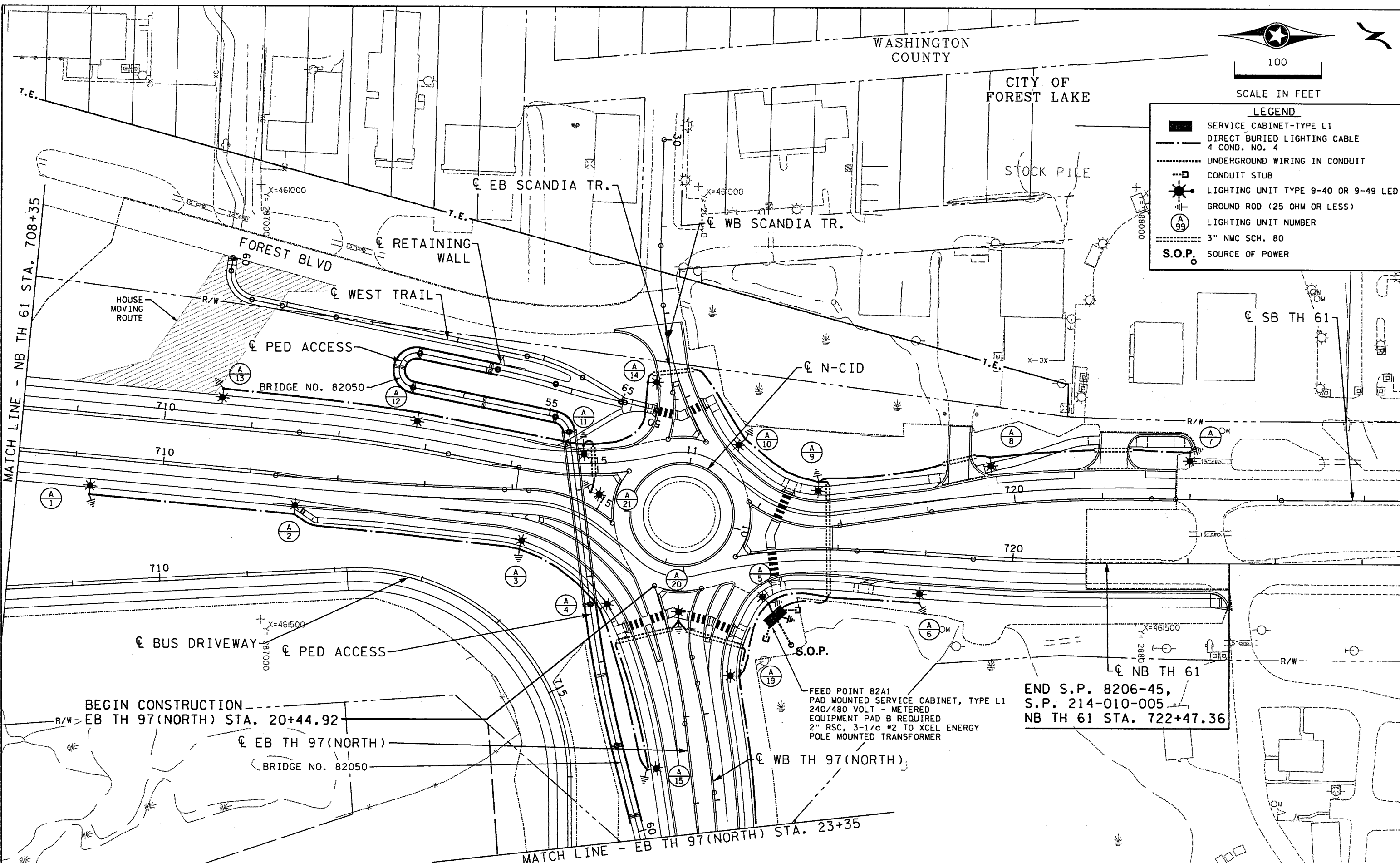


12133 PM
2/9/2015
S:\XO\W\mtrmd\126142\5-final-dsgn\Plnshts\CT820645_101.dgn



LEGEND

- SERVICE CABINET-TYPE L1
- DIRECT BURIED LIGHTING CABLE 4 COND. NO. 4
- UNDERGROUND WIRING IN CONDUIT
- CONDUIT STUB
- * LIGHTING UNIT TYPE 9-40 OR 9-49 LED
- ⊕ GROUND ROD (25 OHM OR LESS)
- A 99 LIGHTING UNIT NUMBER
- 3" NMC SCH. 80
- S.O.P.** SOURCE OF POWER



BEGIN CONSTRUCTION
EB TH 97(NORTH) STA. 20+44.92

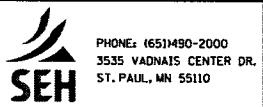
FEED POINT 82A1
PAD MOUNTED SERVICE CABINET, TYPE L1
240/480 VOLT - METERED
EQUIPMENT PAD B REQUIRED
2" RSC, 3-1/c #2 TO XCEL ENERGY
POLE MOUNTED TRANSFORMER

END S.P. 8206-45,
S.P. 214-010-005
NB TH 61 STA. 722+47.36

DESIGN TEAM			
DRAWN BY:	CIF		
DESIGNER:	AKF		
CHECKED BY:	TDH		
	NO.	BY	DATE
			REVISIONS

I hereby certify that this plan was prepared by me or under my direct supervision and that I am a duly Licensed Professional Engineer under the laws of the State of Minnesota.

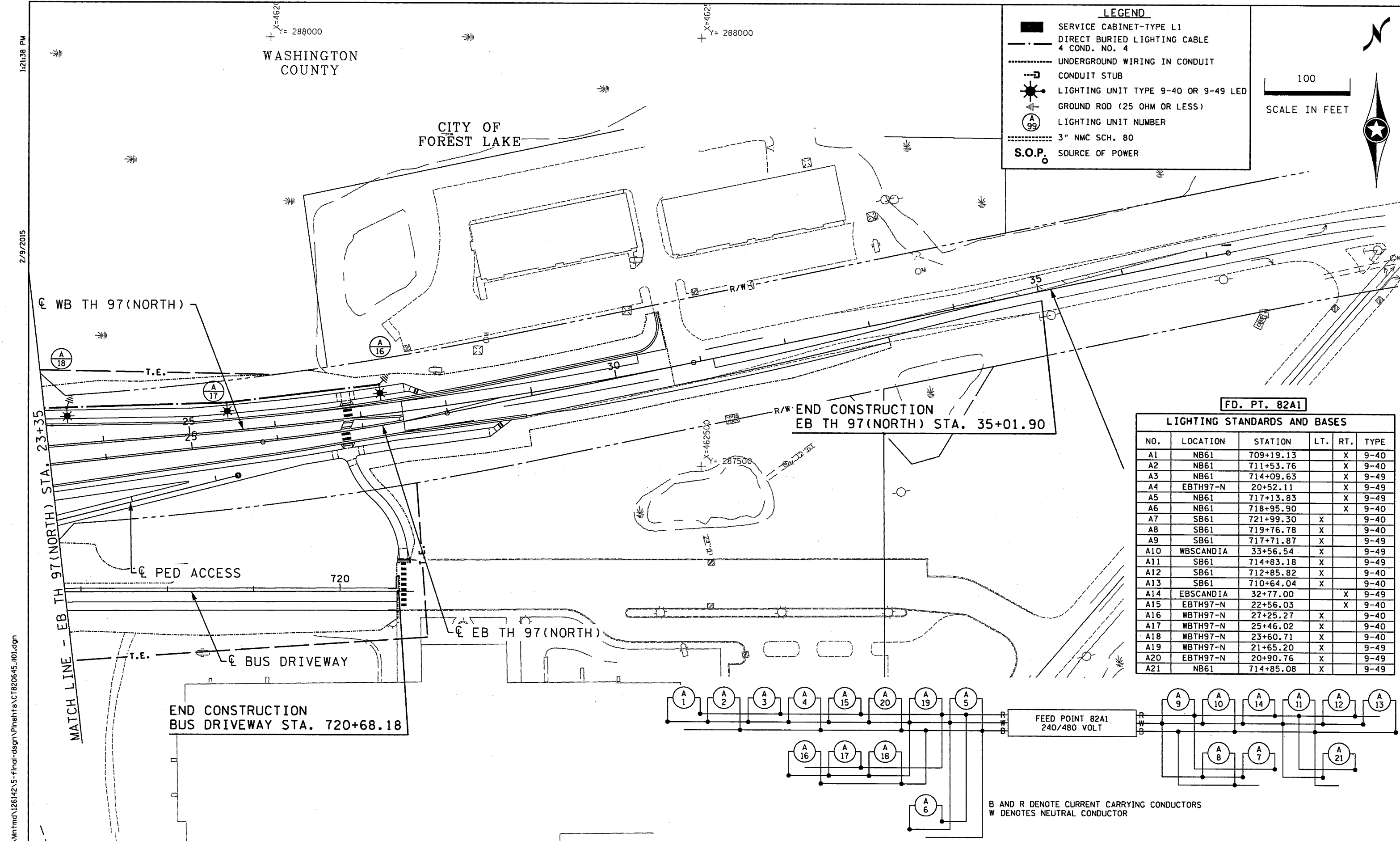
Certified By: *Thomas D. Honer* Lic. No. 45519
Printed Name: THOMAS D. HONER Date: 2/9/2015



T.H. 61 / T.H. 97
S.P. NO. 8206-45 (TH 61), S.P. 214-010-005

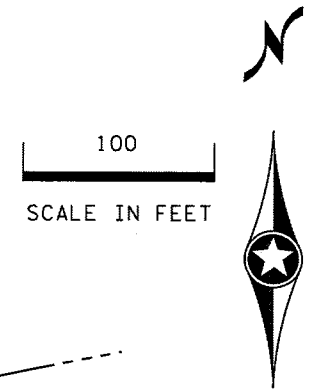
LIGHTING PLAN
NB TH 61 STA. 708+35 TO 724+40
EB TH 97(NORTH) STA. 20+45 TO 23+40

SEH FILE NO.	237
126142	
LL3	247
OF LL5	



LEGEND

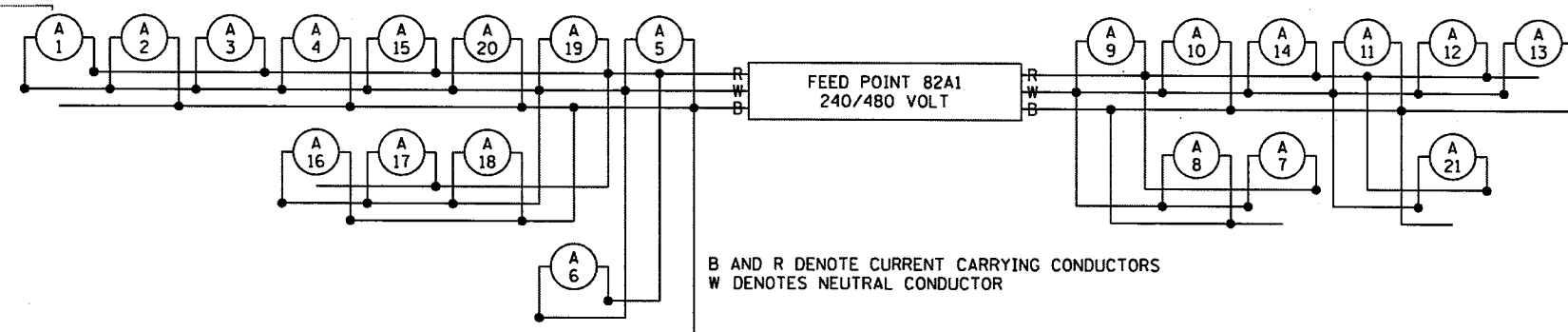
- SERVICE CABINET-TYPE L1
- DIRECT BURIED LIGHTING CABLE 4 COND. NO. 4
- UNDERGROUND WIRING IN CONDUIT
- CONDUIT STUB
- ☀ LIGHTING UNIT TYPE 9-40 OR 9-49 LED
- ⊥ GROUND ROD (25 OHM OR LESS)
- ⊙ LIGHTING UNIT NUMBER
- 3" NMC SCH. 80
- S.O.P. SOURCE OF POWER



FD. PT. 82A1

LIGHTING STANDARDS AND BASES

NO.	LOCATION	STATION	LT.	RT.	TYPE
A1	NB61	709+19.13		X	9-40
A2	NB61	711+53.76		X	9-40
A3	NB61	714+09.63		X	9-49
A4	EBTH97-N	20+52.11		X	9-49
A5	NB61	717+13.83		X	9-49
A6	NB61	718+95.90		X	9-40
A7	SB61	721+99.30	X		9-40
A8	SB61	719+76.78	X		9-40
A9	SB61	717+71.87	X		9-49
A10	WBSCANDIA	33+56.54	X		9-49
A11	SB61	714+83.18	X		9-49
A12	SB61	712+85.82	X		9-40
A13	SB61	710+64.04	X		9-40
A14	EBSCANDIA	32+77.00		X	9-49
A15	EBTH97-N	22+56.03		X	9-40
A16	WBTH97-N	27+25.27	X		9-40
A17	WBTH97-N	25+46.02	X		9-40
A18	WBTH97-N	23+60.71	X		9-40
A19	WBTH97-N	21+65.20	X		9-49
A20	EBTH97-N	20+90.76	X		9-49
A21	NB61	714+85.08	X		9-49



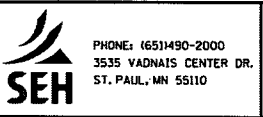
B AND R DENOTE CURRENT CARRYING CONDUCTORS
W DENOTES NEUTRAL CONDUCTOR

1/21/13 3:08 PM
 2/9/2015
 S:\K0\A\Mntm\126142\5-final-dsgn\Plnshs\CTB20645_101.dgn
 LL4

DESIGN TEAM			
DRAWN BY:	CIF		
DESIGNER:	AKF		
CHECKED BY:	TDH		
NO.	BY	DATE	REVISIONS

I hereby certify that this plan was prepared by me or under my direct supervision and that I am a duly Licensed Professional Engineer under the laws of the State of Minnesota.

Certified By: *Thomas D. Honer* Lic. No. 45519
 Printed Name: THOMAS D. HONER Date: 2/9/2015



T.H. 61 / T.H. 97
 S.P. NO. 8206-45 (TH 61), S.P. 214-010-005

LIGHTING PLAN
 EB TH 97(NORTH) STA. 23+40 TO 37+25

SEH FILE NO. 126142	238
LL4 OF LL5	247