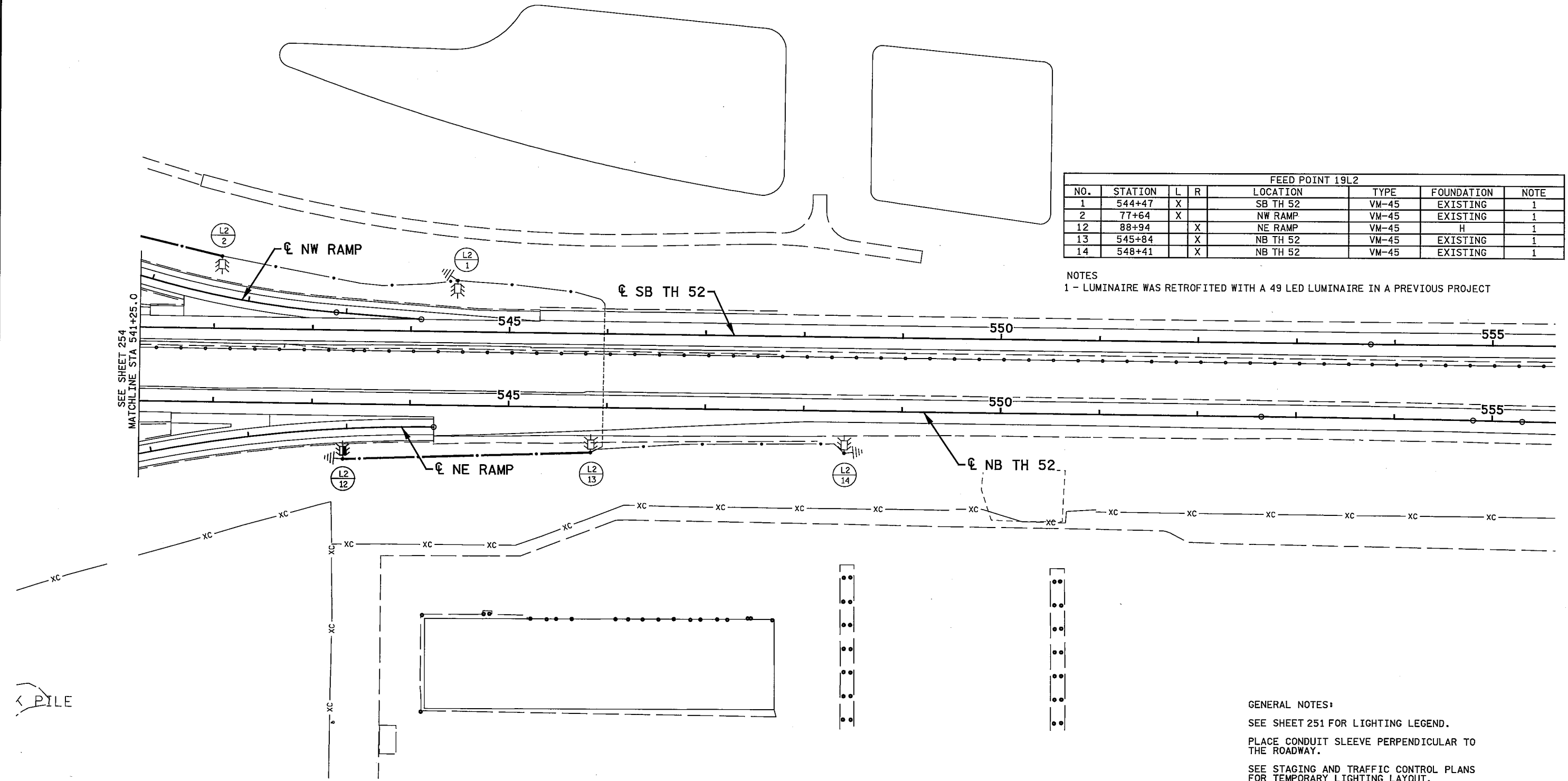


FEED POINT 19L2							
NO.	STATION	L	R	LOCATION	TYPE	FOUNDATION	NOTE
1	544+47	X		SB TH 52	VM-45	EXISTING	1
2	77+64	X		NW RAMP	VM-45	EXISTING	1
12	88+94		X	NE RAMP	VM-45	H	1
13	545+84		X	NB TH 52	VM-45	EXISTING	1
14	548+41		X	NB TH 52	VM-45	EXISTING	1

NOTES  
 1 - LUMINAIRE WAS RETROFITED WITH A 49 LED LUMINAIRE IN A PREVIOUS PROJECT



GENERAL NOTES:  
 SEE SHEET 251 FOR LIGHTING LEGEND.  
 PLACE CONDUIT SLEEVE PERPENDICULAR TO THE ROADWAY.  
 SEE STAGING AND TRAFFIC CONTROL PLANS FOR TEMPORARY LIGHTING LAYOUT.

12:17:26 PM  
 12/28/16  
 H:\Projects\8749\CAD\_BIM\Plan\8749\_1104.dgn

NO	DATE	BY	CKD	APPR	REVISION

I hereby certify that this plan, specification, or report was prepared by me or under my direct supervision and that I am a duly Licensed Professional Electrical Engineer under the laws of the State of Minnesota.  
 Print Name: **STEVE MCHENRY**  
 Date: 10/28/16 License #: 46710

STATE PROJECT NO. 019-642-059  
 208-020-010  
 STATE PROJECT NO. 1906-68 (TH 52)  
 COUNTY PROJECT NO. 42-82  
 CITY PROJECT NO. 461

DRAWN BY T. RICHARDSON  
 DESIGNED BY T. RICHARDSON  
 CHECKED BY S. MCHENRY  
 COMM. NO. 0008749



ENGINEERS  
 PLANNERS  
 DESIGNERS

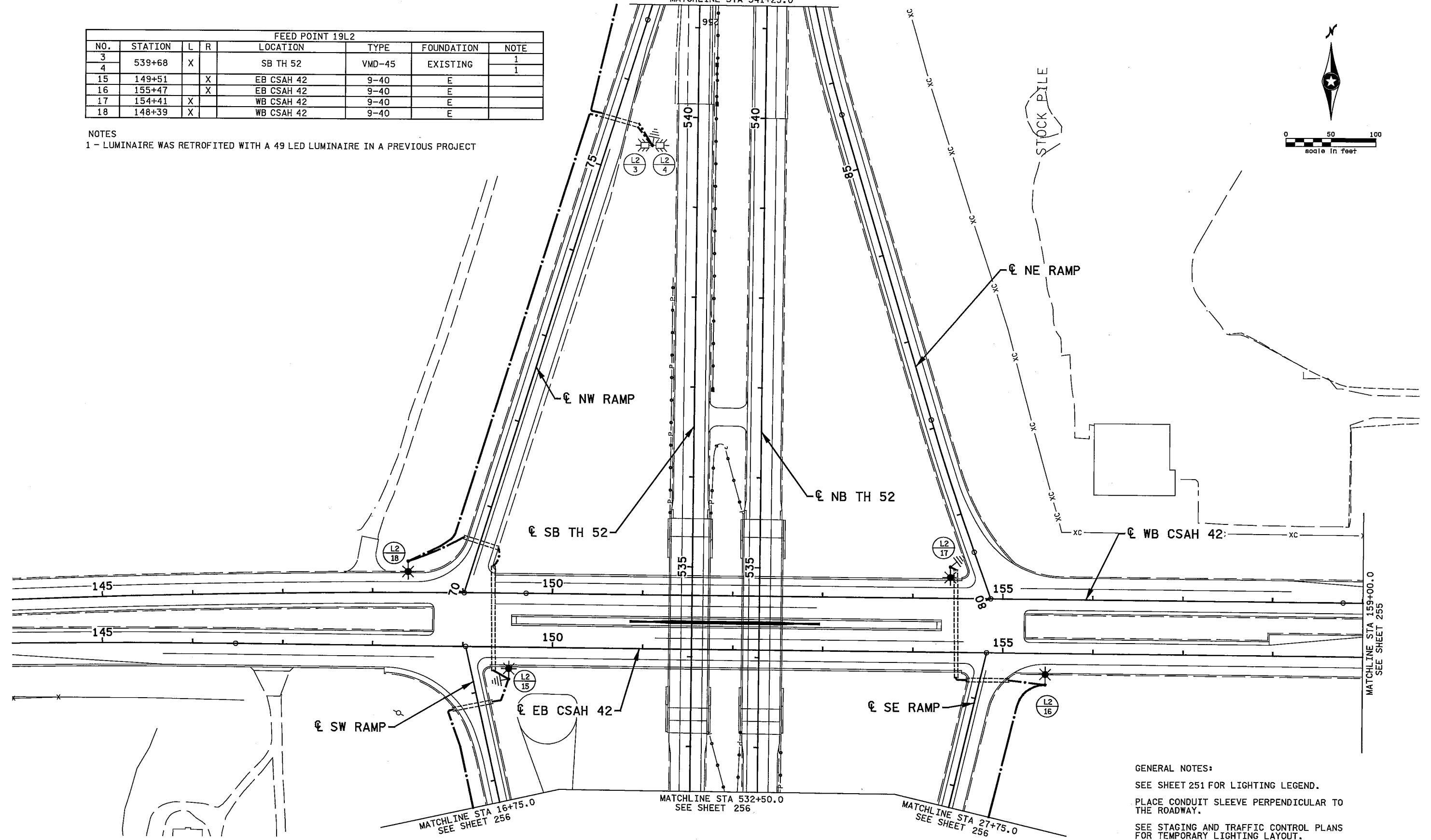
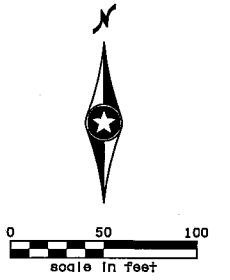
DAKOTA COUNTY  
 LIGHTING PLANS AND DETAILS  
 T.H. 52 / C.S.A.H. 42 INTERCHANGE  
 LIGHTING LAYOUT

SHEET  
 257  
 OF  
 406

SEE SHEET 257  
MATCHLINE STA 541+25.0

FEED POINT 19L2							
NO.	STATION	L	R	LOCATION	TYPE	FOUNDATION	NOTE
3	539+68	X		SB TH 52	VMD-45	EXISTING	1
4							1
15	149+51		X	EB CSAH 42	9-40	E	
16	155+47		X	EB CSAH 42	9-40	E	
17	154+41	X		WB CSAH 42	9-40	E	
18	148+39	X		WB CSAH 42	9-40	E	

NOTES  
1 - LUMINAIRE WAS RETROFITED WITH A 49 LED LUMINAIRE IN A PREVIOUS PROJECT



GENERAL NOTES:  
SEE SHEET 251 FOR LIGHTING LEGEND.  
PLACE CONDUIT SLEEVE PERPENDICULAR TO THE ROADWAY.  
SEE STAGING AND TRAFFIC CONTROL PLANS FOR TEMPORARY LIGHTING LAYOUT.

12:17:05 PM  
12/28/16  
H:\Projects\8749\CAD\BIM\lan\8749\_1101.dgn

NO	DATE	BY	CKD	APPR	REVISION

I hereby certify that this plan, specification, or report was prepared by me or under my direct supervision and that I am a duly Licensed Professional Electrical Engineer under the laws of the State of Minnesota.  
Print Name: STEVE MCHENRY  
*Steve Mchenry*  
Date: 10/28/16 License #: 46710

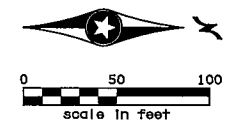
STATE PROJECT NO. 019-642-059  
208-020-010  
STATE PROJECT NO. 1906-68 (TH 52)  
COUNTY PROJECT NO. 42-82  
CITY PROJECT NO. 461  
DRAWN BY T. RICHARDSON  
DESIGNED BY T. RICHARDSON  
CHECKED BY S. MCHENRY  
COMM. NO. 0008749



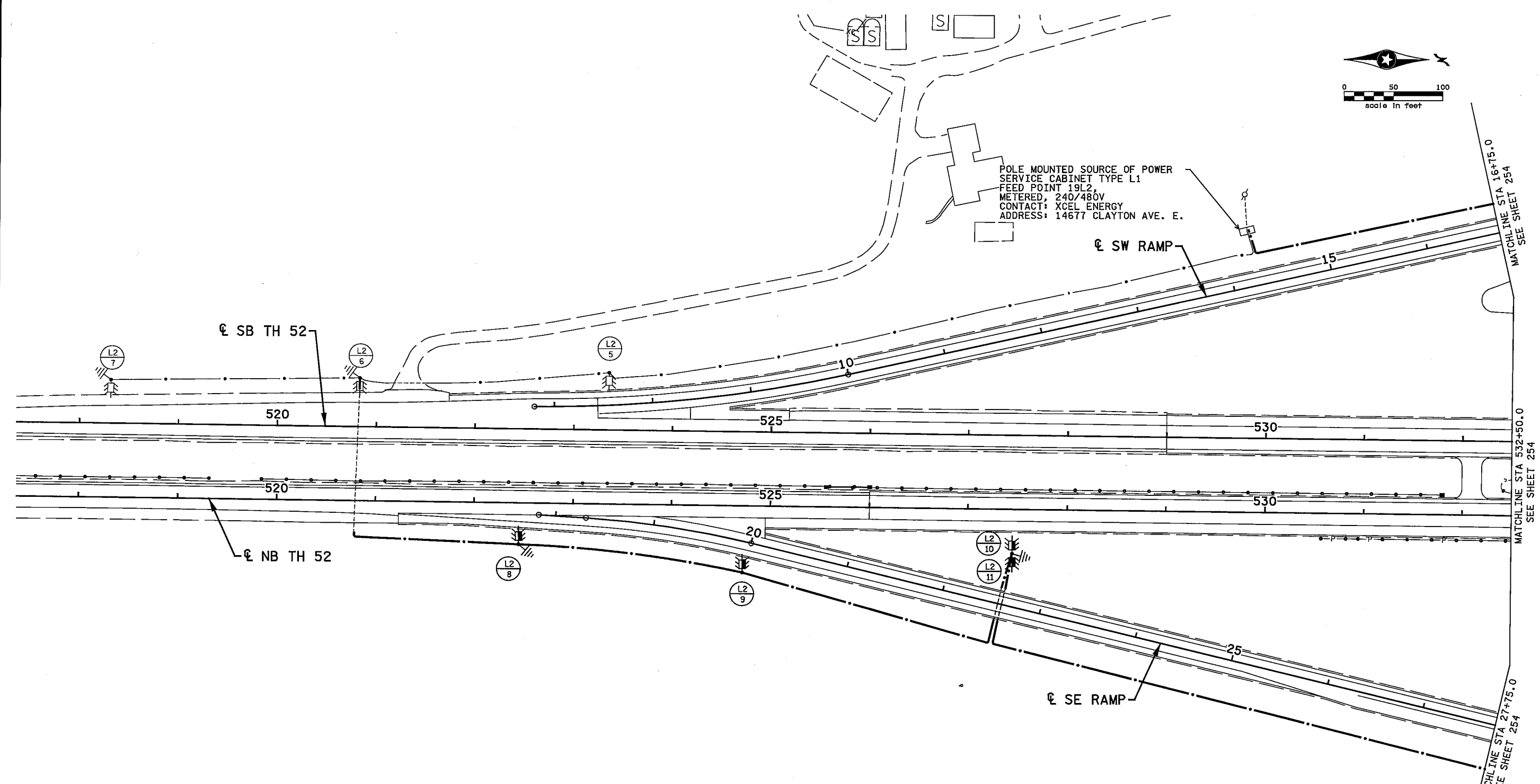
ENGINEERS  
PLANNERS  
DESIGNERS

DAKOTA COUNTY  
LIGHTING PLANS AND DETAILS  
T.H. 52 / C.S.A.H. 42 INTERCHANGE  
LIGHTING LAYOUT

SHEET  
254  
OF  
406



POLE MOUNTED SOURCE OF POWER  
 SERVICE CABINET TYPE L1  
 FEED POINT 19L2,  
 METERED, 240/480V  
 CONTACT: XCEL ENERGY  
 ADDRESS: 14677 CLAYTON AVE. E.



FEED POINT 19L2							
NO.	STATION	L	R	LOCATION	TYPE	FOUNDATION	NOTE
5	7+57	X		SW RAMP	VM-45	EXISTING	1
6	520+83	X		SB TH 52	VM-45	EXISTING	1
7	518+31	X		SB TH 52	VM-45	EXISTING	1
8	522+45		X	NB TH 52	VM-45	H	1
9	19+98		X	SE RAMP	VM-45	H	1
10							1
11	527+45		X	NB TH 52	VMD-45	H	1

NOTES  
 1 - LUMINAIRE WAS RETROFITED WITH A 49 LED LUMINAIRE IN A PREVIOUS PROJECT

GENERAL NOTES:  
 SEE SHEET 251 FOR LIGHTING LEGEND.  
 PLACE CONDUIT SLEEVE PERPENDICULAR TO THE ROADWAY.  
 SEE STAGING AND TRAFFIC CONTROL PLANS FOR TEMPORARY LIGHTING LAYOUT.

12:17:56 PM  
 12/8/2016  
 H:\Projects\8749\CAD\_BIM\Plan\8749\_1103.dgn

I hereby certify that this plan, specification, or report was prepared by me or under my direct supervision and that I am a duly Licensed Professional Electrical Engineer under the laws of the State of Minnesota. Print Name: <b>STEVE MCHENRY</b> Date: <u>10/28/16</u> License #: <u>48710</u>				STATE PROJECT NO. 019-642-059 208-020-010 STATE PROJECT NO. 1906-68 (TH 52) COUNTY PROJECT NO. 42-82 CITY PROJECT NO. 461		DRAWN BY <b>T. RICHARDSON</b> DESIGNED BY <b>T. RICHARDSON</b> CHECKED BY <b>S. MCHENRY</b> COMM. NO. 0008749	
NO. DATE BY CKD APPR REVISION						<b>ENGINEERS          PLANNERS          DESIGNERS</b>	
<b>DAKOTA COUNTY</b> LIGHTING PLANS AND DETAILS <b>T.H. 52 / C.S.A.H. 42 INTERCHANGE</b> LIGHTING LAYOUT						<b>SHEET          256          OF          406</b>	

LIGHTING TABULATION				M	
NOTES	ITEM DESCRIPTION	UNIT	TOTAL	SP 019-642-059 SP1906-68 (TH 52)	SP 019-642-059 SP1906-68 (TH 52) (CSAH 42 SAP 208-020-010)
	LIGHTING UNIT TYPE 9-40	EACH	6	4	2
	LIGHT FOUNDATION DESIGN E	EACH	6	4	2
	LIGHT FOUNDATION DESIGN H	EACH	4	4	
	2" RIGID STEEL CONDUIT	LIN FT	54		54
	3" NON-METALLIC CONDUIT	LIN FT	681	451	230
	UNDERGROUND WIRE 1 COND NO 2	LIN FT	201		201
	DIRECT BURIED LIGHTING CABLE 4 COND NO 4	LIN FT	4436	4064	372
	SERVICE CABINET TYPE L1	EACH	1		1
	EQUIPMENT PAD B	EACH	1		1
1	TEMPORARY LIGHTING SYSTEM	LUMP SUM	1	1	
	INSTALL LIGHTING UNIT	EACH	4	4	
	MODIFY FEED POINT	EACH	1	1	

NOTES:  
1 - INCLUDES TEMPORARY LIGHTING SYSTEM REMOVAL

LEGEND	
	LIGHTING UNIT TYPE 9-40
	INPLACE LIGHTING UNIT TYPE VERTICAL MOUNT (VM)
	INPLACE UTILITY LIGHTING UNIT
	INSTALL SALVAGED LIGHTING UNIT TYPE VERTICAL MOUNT (VM)
	SERVICE CABINET - TYPE L1
	PERMANENT GROUND ROD (25 OHMS OR LESS)
	INPLACE GROUND ROD
	INPLACE SERVICE CABINET
	DIRECT BURIED LIGHTING CABLE 4 COND NO 4
	INPLACE DIRECT BURIED LIGHTING CABLE
	3" NON-METALLIC CONDUIT (UNLESS OTHERWISE NOTED)
	INPLACE CONDUIT (UNLESS OTHERWISE NOTED)
	POLE MOUNTED SOURCE OF POWER (BY OTHERS)
	INPLACE SOURCE OF POWER

12:47:32 PM  
H:\Projects\8749\CAD\_BIM\plan\8749.tb04.dgn

NO	DATE	BY	CHKD	APPR	REVISION

... \CAD\_BIM\plan\8749.tb04.dgn

I hereby certify that this plan, specification, or report was prepared by me or under my direct supervision and that I am a duly Licensed Professional Engineer under the laws of the State of Minnesota.

Print Name: **STEVE MCHENRY**

Date: **10/28/16** License #: **46710**

STATE PROJECT NO.  
019-642-059  
208-020-010

STATE PROJECT NO.  
1906-68 (TH 52)

COUNTY PROJECT NO.  
42-82

CITY PROJECT NO. 461

DRAWN BY  
T. RICHARDSON

DESIGNED BY  
T. RICHARDSON

CHECKED BY  
S. MCHENRY

COMM. NO. 0008749



ENGINEERS  
PLANNERS  
DESIGNERS

DAKOTA COUNTY  
LIGHTING PLANS AND DETAILS  
T.H. 52 / C.S.A.H. 42 INTERCHANGE  
TABULATION AND LEGEND

SHEET  
251  
OF  
406