

PLOTTED/REVISED: 11-FEB-2022

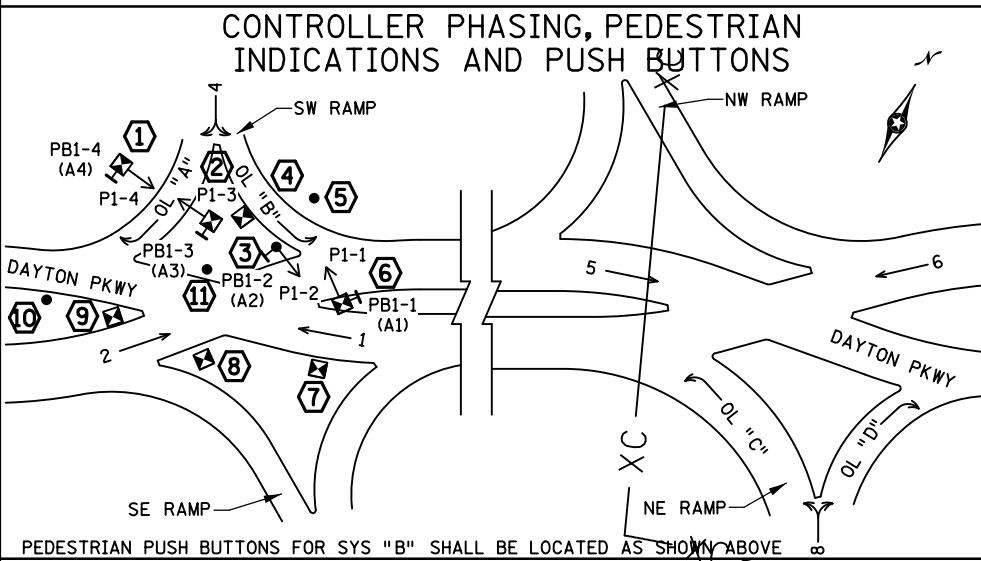
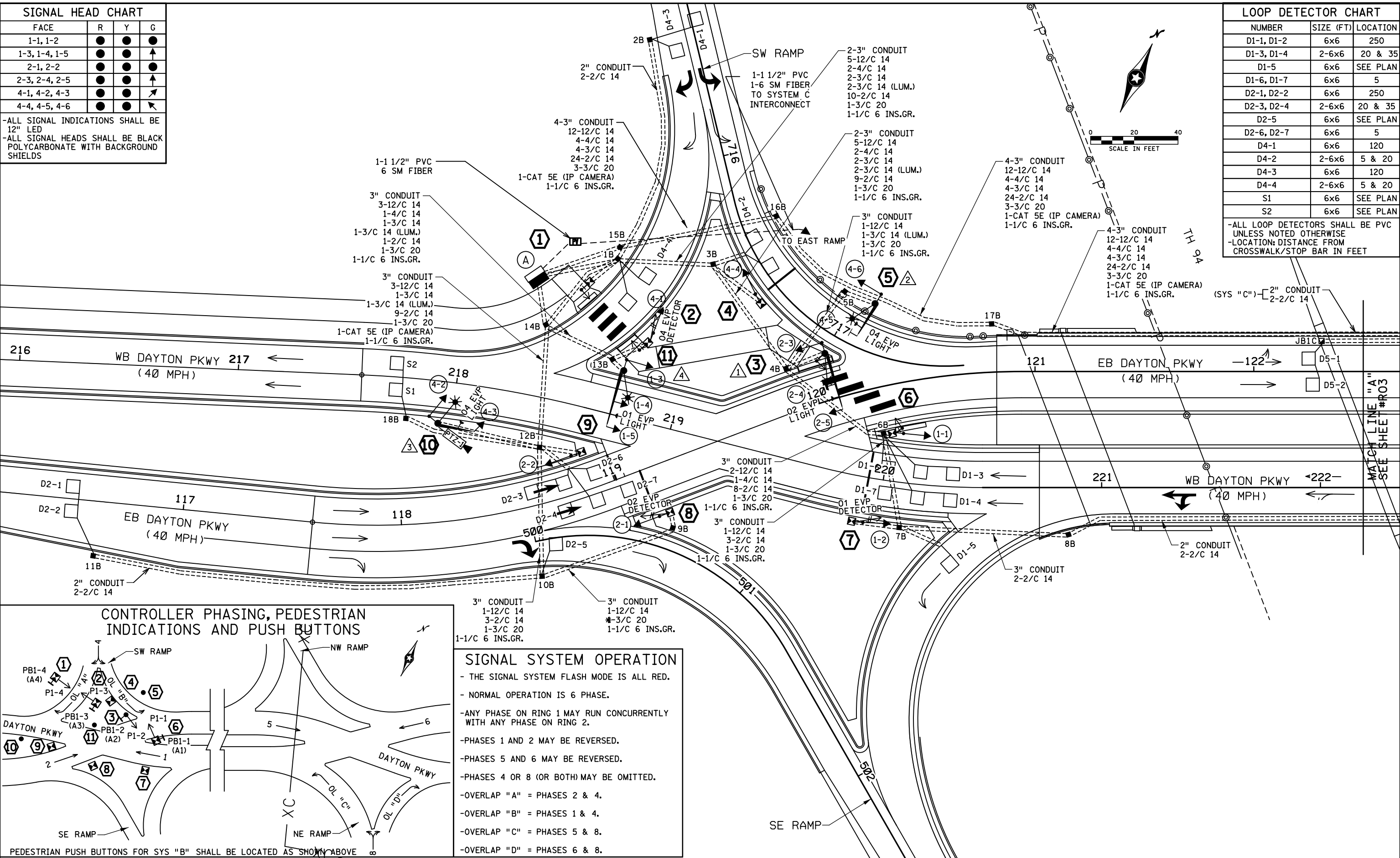
DISTRICT #: Metro
 PLOT NAME: 10472_r02_sheet3
 FILENAME: Projects\DM_FOS\09\A0000\Traffic\Signals\2498822 TH 94 at Dayton PKWY DDI E.Ramp\PENDING\10472_r02.dgn

SIGNAL HEAD CHART			
FACE	R	Y	G
1-1, 1-2	●	●	●
1-3, 1-4, 1-5	●	●	▲
2-1, 2-2	●	●	●
2-3, 2-4, 2-5	●	●	▲
4-1, 4-2, 4-3	●	●	▲
4-4, 4-5, 4-6	●	●	▲

-ALL SIGNAL INDICATIONS SHALL BE 12" LED
 -ALL SIGNAL HEADS SHALL BE BLACK POLYCARBONATE WITH BACKGROUND SHIELDS

LOOP DETECTOR CHART		
NUMBER	SIZE (FT)	LOCATION
D1-1, D1-2	6x6	250
D1-3, D1-4	2-6x6	20 & 35
D1-5	6x6	SEE PLAN
D1-6, D1-7	6x6	5
D2-1, D2-2	6x6	250
D2-3, D2-4	2-6x6	20 & 35
D2-5	6x6	SEE PLAN
D2-6, D2-7	6x6	5
D4-1	6x6	120
D4-2	2-6x6	5 & 20
D4-3	6x6	120
D4-4	2-6x6	5 & 20
S1	6x6	SEE PLAN
S2	6x6	SEE PLAN

-ALL LOOP DETECTORS SHALL BE PVC UNLESS NOTED OTHERWISE
 -LOCATION: DISTANCE FROM CROSSWALK/STOP BAR IN FEET



SIGNAL SYSTEM OPERATION

- THE SIGNAL SYSTEM FLASH MODE IS ALL RED.
- NORMAL OPERATION IS 6 PHASE.
- ANY PHASE ON RING 1 MAY RUN CONCURRENTLY WITH ANY PHASE ON RING 2.
- PHASES 1 AND 2 MAY BE REVERSED.
- PHASES 5 AND 6 MAY BE REVERSED.
- PHASES 4 OR 8 (OR BOTH) MAY BE OMITTED.
- OVERLAP "A" = PHASES 2 & 4.
- OVERLAP "B" = PHASES 1 & 4.
- OVERLAP "C" = PHASES 5 & 8.
- OVERLAP "D" = PHASES 6 & 8.

BY	DATE	REVISIONS
HRL	01/18/22	CONSTRUCTION REDLINES FOR SP-2780-100

SYSTEM ID: 2498821 T.E. 17688
 METER ADDRESS:
 OLD SYSTEM ID:

TRAFFIC CONTROL SIGNAL SYSTEM INTERSECTION LAYOUT
 T.H. 94 W RAMP AT DAYTON PKWY

S.A.P. NO.	DRAWN BY: HRL	CKD BY: CDB	DATE:
CERTIFIED BY _____	LICENSED PROFESSIONAL ENGINEER		LIC. NO. _____ DATE: _____
STATE PROJ. NO. 2780-100 (T.H.94)		SHEET NO. 3 OF 6 SHEETS	

INTERSECTION NOTES

① PEDESTAL FOUNDATION
 10' PEDESTAL POLE PLUS BASE
 1-STRAIGHT MOUNT C.D. PED HEAD AT 90 DEG
 1-APS PB AND SIGN (RT ARROW) (PB1-4)
 AND APS PB MOUNTING SPACERS
 1-R10-11B SIGN (FACING SW RAMP)
 3" CONDUIT TO HH 1B:
 1-4/C 14
 1-2/C 14
 2-1/C 6 INS. GR.

② PEDESTAL FOUNDATION
 13' PEDESTAL POLE PLUS BASE
 1-STRAIGHT MOUNT SIGNAL AT 90 DEG
 1-STRAIGHT MOUNT C.D. PED HEAD AT 270 DEG
 1-ONE WAY EVP DETECTOR (PHASE 4)
 1-APS PB AND SIGN (LT ARROW) (PB1-3)
 AND APS PB MOUNTING SPACERS
 3" CONDUIT TO HH 13B:
 1-12/C 14
 1-4/C 14
 1-2/C 14
 1-3/C 20
 2-1/C 6 INS. GR.

③ PA85 POLE FOUNDATION
 TYPE PA85-A-25-D40-9 (DAVIT AT 350 DEG)
 1-ANGLE MOUNT SIGNAL OVERHEAD AT 0'
 1-STRAIGHT MOUNT SIGNAL OVERHEAD AT 11'
 1-ANGLE MOUNT SIGNAL AT 180 DEG
 1-ANGLE MOUNT C.D. PED HEAD AT 90 DEG
 1-ONE WAY EVP CONFIRMATORY LIGHT (PHASE 2)
 1-APS PB AND SIGN (RT ARROW) (PB1-2)
 AND APS PB POLE MOUNT ADAPTOR
 LUMINAIRE-LED (FOR 40' MOUNTING HEIGHT)
 1-TYPE D SIGN (D-2) (SEE SIGN DETAILS)
 1-R10-11B SIGN (FACING SW RAMP)
 3" CONDUIT TO HH 4B:
 2-12/C 14
 1-4/C 14
 1-3/C 14
 1-3/C 14 (LUM.)
 1-2/C 14
 1-1/C 6 INS. GR.

④ PEDESTAL FOUNDATION
 13' PEDESTAL POLE PLUS BASE
 1-STRAIGHT MOUNT SIGNAL AT 90 DEG
 3" CONDUIT TO HH 3B:
 1-12/C 14
 2-1/C 6 INS. GR.

⑤ PA85 POLE FOUNDATION
 TYPE PA85-A-15-D40-9 (DAVIT AT 360 DEG)
 1-ANGLE MOUNT SIGNAL OVERHEAD AT 0'
 1-ANGLE MOUNT SIGNAL AT 180 DEG
 1-ONE WAY EVP CONFIRMATORY LIGHT (PHASE 4)
 LUMINAIRE-LED (FOR 40' MOUNTING HEIGHT)
 1-TYPE D SIGN (D-1) (SEE SIGN DETAILS)
 1-R10-11B SIGN (FACING SW RAMP)
 3" CONDUIT TO HH 5B:
 1-12/C 14
 1-3/C 14
 1-3/C 14 (LUM.)
 1-1/C 6 INS. GR.

⑥ PEDESTAL FOUNDATION
 13' PEDESTAL POLE PLUS BASE
 1-STRAIGHT MOUNT SIGNAL AT 270 DEG
 1-STRAIGHT MOUNT C.D. PED HEAD AT 270 DEG
 1-APS PB AND SIGN (RT ARROW) (PB1-1)
 AND APS PB MOUNTING SPACERS
 3" CONDUIT TO HH 6B:
 1-12/C 14
 1-4/C 14
 1-2/C 14
 2-1/C 6 INS. GR.

⑦ PEDESTAL FOUNDATION
 13' PEDESTAL POLE PLUS BASE
 1-STRAIGHT MOUNT SIGNAL AT 90 DEG
 1-ONE WAY EVP DETECTOR (PHASE 1)
 3" CONDUIT TO HH 8B:
 1-12/C 14
 1-3/C 20
 1-1/C 6 INS. GR.

⑧ PEDESTAL FOUNDATION
 13' PEDESTAL POLE PLUS BASE
 1-STRAIGHT MOUNT SIGNAL AT 270 DEG
 1-ONE WAY EVP DETECTOR (PHASE 2)
 3" CONDUIT TO HH 10B:
 1-12/C 14
 1-3/C 20
 1-1/C 6 INS. GR.

⑨ PEDESTAL FOUNDATION
 13' PEDESTAL POLE PLUS BASE
 1-STRAIGHT MOUNT SIGNAL AT 90 DEG
 3" CONDUIT TO HH 13B:
 1-12/C 14
 2-1/C 6 INS. GR.

⑩ PA85 POLE FOUNDATION
 TYPE PA85-A-15-X6-350/CAM 400 EXTENSION
 (DAVIT AT 350 DEG)
 (INCLUDES LIGHTNING ROD, 7/16" GROUND BRAID
 AND GROUND ROD)
 1-IP CAMERA (PTZ-1) WITH MOUNT (STATE FURNISHED)
 1-ANGLE MOUNT SIGNAL OVERHEAD AT 0'
 1-ANGLE MOUNT SIGNAL AT 180 DEG
 1-ONE WAY EVP CONFIRMATORY LIGHT (PHASE 4)
 LUMINAIRE-LED (FOR 40' MOUNTING HEIGHT)
 1-TYPE D SIGN (D-1) (SEE SIGN DETAILS)
 1-R10-11B SIGN (FACING SW RAMP)
 3" CONDUIT TO HH 12B:
 1-12/C 14
 1-3/C 14
 1-3/C 14 (LUM.)
 1-CAT 5E (IP CAMERA)
 1-1/C 6 INS. GR.

⑪ PA85 POLE FOUNDATION
 TYPE PA85-A-25-D40-9 (DAVIT AT 350 DEG)
 1-ANGLE MOUNT SIGNAL OVERHEAD AT 0'
 1-STRAIGHT MOUNT SIGNAL OVERHEAD AT 11'
 1-ANGLE MOUNT SIGNAL AT 180 DEG
 1-ONE WAY EVP CONFIRMATORY LIGHT (PHASE 1)
 LUMINAIRE-LED (FOR 40' MOUNTING HEIGHT)
 1-TYPE D SIGN (D-2) (SEE SIGN DETAILS)
 3" CONDUIT TO HH 13B:
 2-12/C 14
 1-3/C 14
 1-3/C 14 (LUM.)
 1-1/C 6 INS. GR.

Ⓐ EQUIPMENT PAD (SEE DETAIL SHEET)
 SERVICE CABINET (SSB)
 CABINET (STATE FURNISHED)
 3" CONDUIT TO HH 14B:
 3-12/C 14
 1-4/C 14
 1-3/C 14
 1-3/C 20

3" CONDUIT TO HH 1B:
 3-12/C 14
 2-4/C 14
 2-3/C 14

3" CONDUIT TO HH 14B:
 3-12/C 14
 1-3/C 14
 1-3/C 20
 1-CAT 5E (IP CAMERA)
 1-1/C 6 INS. GR.

3" CONDUIT TO HH 1B:
 3-12/C 14
 1-4/C 14
 1-3/C 20
 1-1/C 6 INS. GR.

3" CONDUIT TO HH 14B:
 10-2/C 14

3" CONDUIT TO HH 1B:
 14-2/C 14

4-3" CONDUIT TO HH 15B:
 12-12/C 14
 4-4/C 14
 4-3/C 14
 24-2/C 14
 3-3/C 20
 1-CAT 5E (IP CAMERA)
 1-1/C 6 INS. GR.

GROUND WIRE AND GROUND ROD - MIN 8' OUT FROM PAD
 2-2" AND 1-3" CONDUIT STUBBED OUT (CAPPED BOTH ENDS)
 1 1/2" CONDUIT STUBBED OUT (FOR TELEPHONE LINE/FIBER)
 CONTROLLER CABINET TO SERVICE CABINET:
 2" CONDUIT
 2-1/C 6
 1-1/C 6 INS. GR.
 CONTROLLER CABINET TO SERVICE CABINET (COMMS):
 2" CONDUIT
 1-6PR 19
 SERVICE CABINET TO HH 14B:
 2" CONDUIT
 4-3/C 14 (LUM.)
 SERVICE CABINET TO EXTERNAL GR. RD.:
 1" CONDUIT
 1-1/C 6 INS. GR.
 (SEE EQUIPMENT PAD LAYOUT)
 HH 14B TO HH 1B:
 2" CONDUIT
 2-3/C 14 (LUM.)

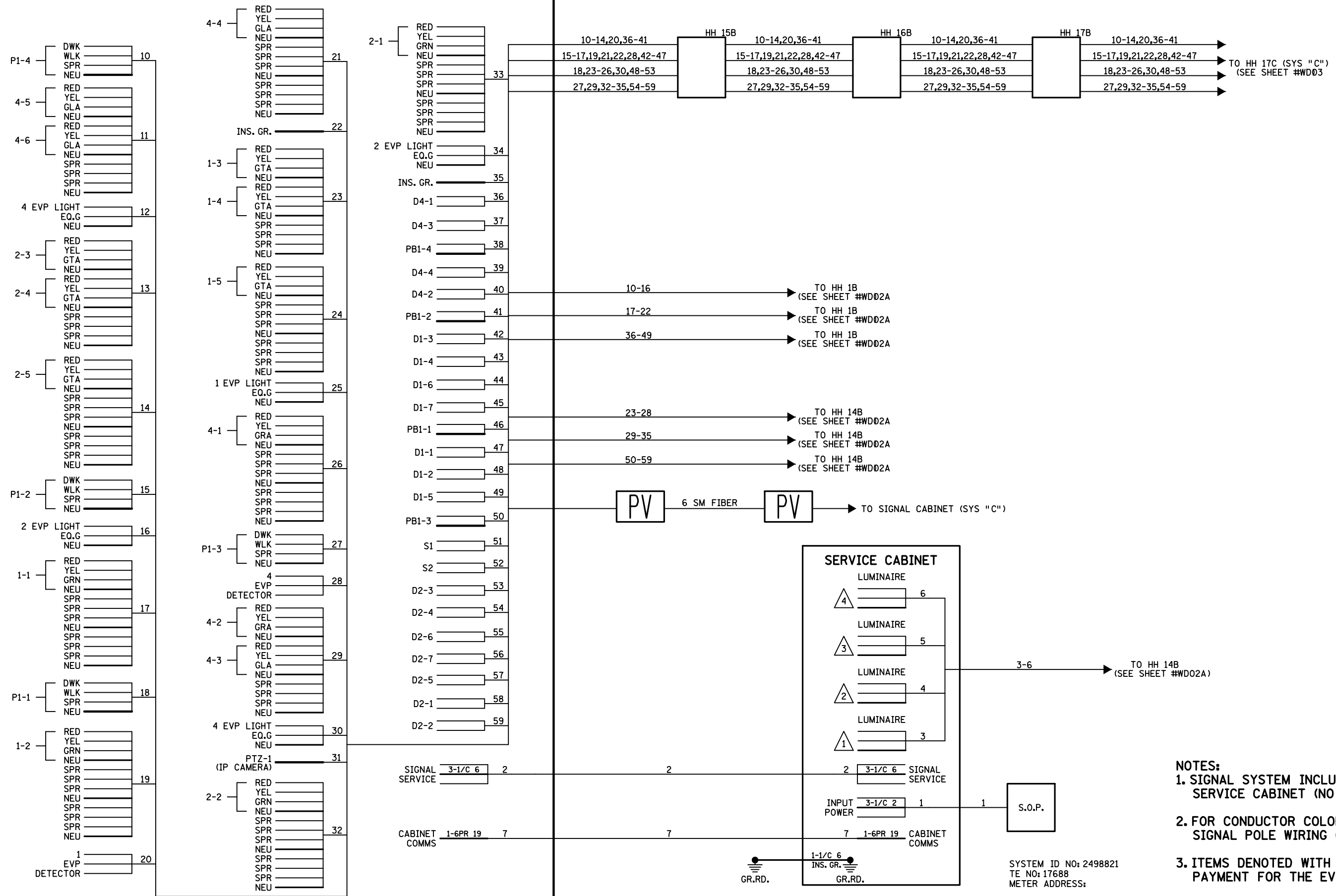
Ⓑ SOP-GROUND MOUNTED TRANSFORMER (XCEL)
 2" CONDUIT INTO SERVICE CABINET:
 3-1/C 2

PLOTTED/REVISED: 11-FEB-2022

DISTRICT *: Metro
 PLOT NAME: 10472_r02_ssheet4
 FILENAME: Projects\DM_R05\09\0000\Traffic\Signals\2498822 TH 94 at Dayton PRWY DDI E.Ramp\ENDING\10472_r02.dgn

BY	DATE	REVISIONS	SYSTEM ID: 2498821	T.E. 17688	TRAFFIC CONTROL SIGNAL SYSTEM INTERSECTION NOTES T.H. 94 W RAMP AT DAYTON PKWY	S.A.P. NO.	DRAWN BY:HRL	CKD BY:CDB	DATE:
HRL	01/18/22	CONSTRUCTION REDLINES FOR SP-2780-100	METER ADDRESS:			CERTIFIED BY _____	LIC. NO. _____	DATE: _____	
			OLD SYSTEM ID:			STATE PROJ.NO. 2780-100 (T.H.94) SHEET NO. 4 OF 6 SHEETS			

CONTROLLER CABINET



- NOTES:**
1. SIGNAL SYSTEM INCLUDES BATTERY BACKUP SERVICE CABINET (NO BATTERIES).
 2. FOR CONDUCTOR COLOR CODE SEE TRAFFIC SIGNAL POLE WIRING CONNECTOR DETAIL.
 3. ITEMS DENOTED WITH AN * ARE INCLUDED IN PAYMENT FOR THE EVF SYSTEM PAY ITEM.

SYSTEM ID NO: 2498821
TE NO: 17688
METER ADDRESS:

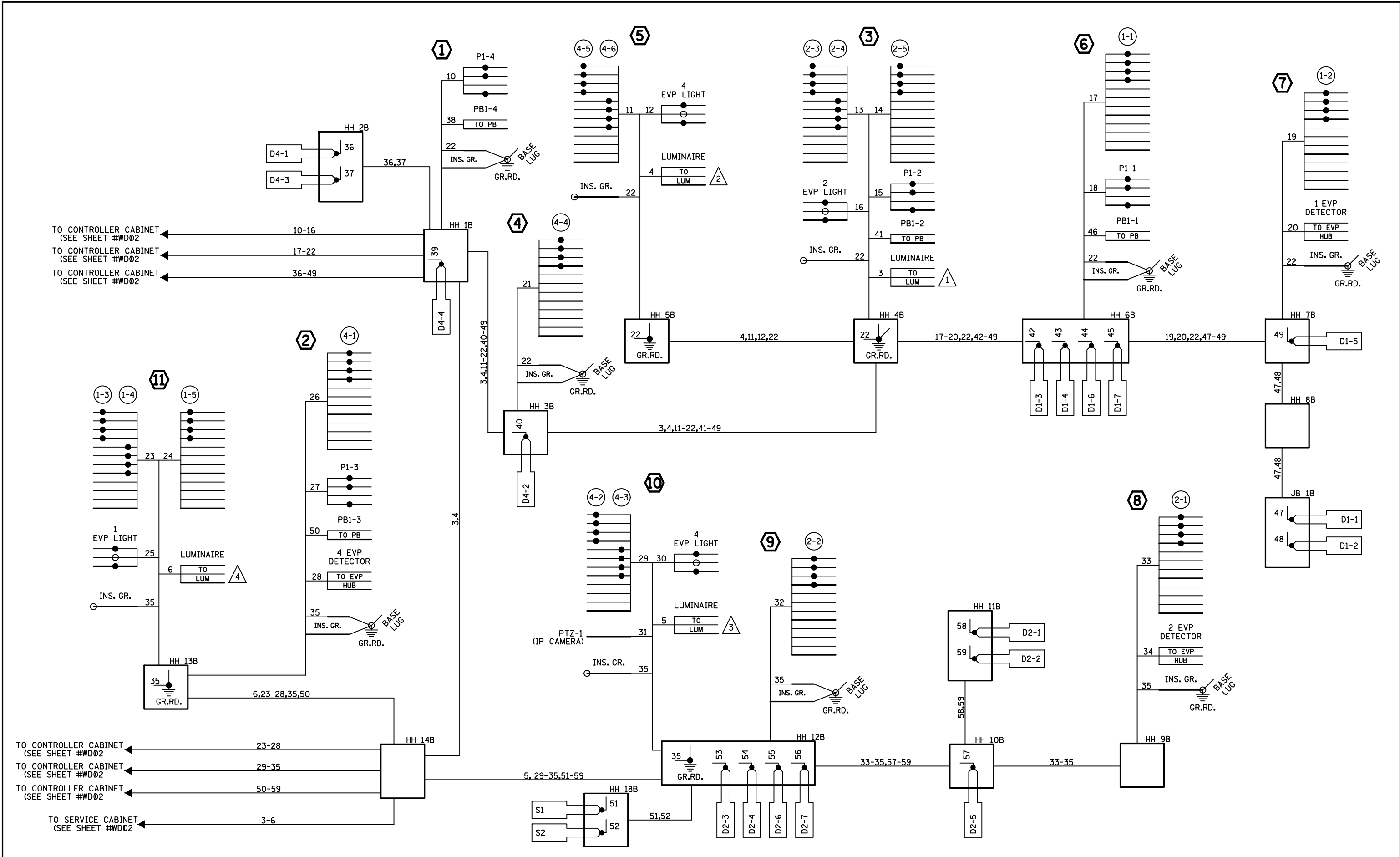
DISTRICT *: Metro
 PLOT NAME: 10472_r02_sheet 5
 FILENAME: Projects\DM_FOS\09\0000\Traffic\Signal\2498822 TH 94 at Dayton PKWY DDI E-Ramp\ENDING\0472_r02.dgn

BY	DATE	REVISIONS	SYSTEM ID:	T.E.	S.A.P. NO.	DRAWN BY:HRL	CKD BY:CDB	DATE:
HRL	01/18/22	CONSTRUCTION REDLINES FOR SP-2780-100						
			METER ADDRESS:		CERTIFIED BY _____ LIC. NO. _____ DATE: _____			
			OLD SYSTEM ID:		STATE PROJ.NO. 2780-100 (T.H.94) SHEET NO. 5 OF 6 SHEETS			

TRAFFIC CONTROL SIGNAL SYSTEM
FIELD WIRING DIAGRAM (1 OF 2)
T.H. 94 W RAMP AT DAYTON PKWY

PLOTTED/REVISED: 11-FEB-2022

DISTRICT *: Metro
PLOT NAME: 10472_r02_sheet 6
FILENAME: Projects\DM_FOS\09\0000\Traffic\Signals\2498822 TH 94 at Dayton PRMY DDI E-Ramp\VPENDING\10472_r02.dgn



BY	DATE	REVISIONS
HRL	01/18/22	CONSTRUCTION REDLINES FOR SP 2780-100

SYSTEM ID: 2498821 T.E. 17688
 METER ADDRESS:
 OLD SYSTEM ID:

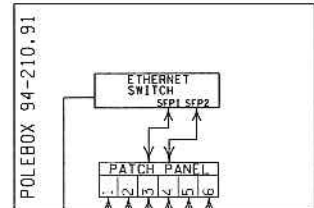
**TRAFFIC CONTROL SIGNAL SYSTEM
 FIELD WIRING DIAGRAM (2 OF 2)
 T.H. 94 W RAMP AT DAYTON PKWY**

S.A.P. NO.	DRAWN BY:HRL	CKD BY:CDB	DATE:
CERTIFIED BY _____	LIC. NO. _____	DATE: _____	
STATE PROJ.NO. 2780-100 (T.H.94)		SHEET NO. 6 OF	6 SHEETS

CAM C30143



CAT 6

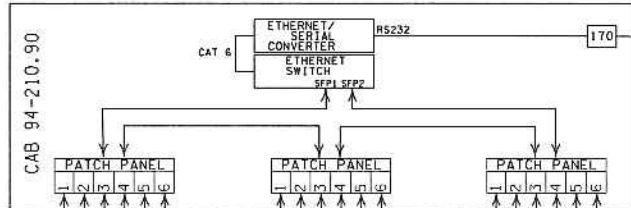


TH94 EB AT
MP 210.91

PIGTAIL OTDR
LENGTH
_____ km

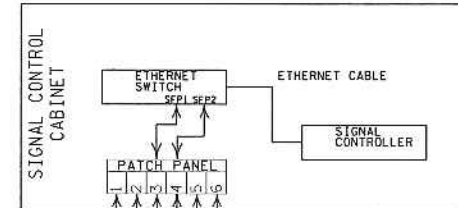
PIGTAIL ID#:
POLE94-210.91

PIGTAIL OTDR
LENGTH
_____ km



TH94 EB AT
MP 210.90

PIGTAIL ID#:
CAB94-210.90



TH94 EB AT
MP 210.90

PIGTAIL OTDR
LENGTH
_____ km

PIGTAIL ID#:
SIC2498821

TO SPLICE VAULT (BY SP 2780-97)

11:55:45 AM
12/19/2019
R:\Projects\10000\10472\Design\PlanSheets\Final\Plan\10472_tmc31.dgn

NO	DATE	BY	CKD	APPR	REVISION
	6/27/18				

I hereby certify that this plan, specification, or report was prepared by me or under my direct supervision and that I am a duly Licensed Professional Engineer under the laws of the State of Minnesota.

Print Name: **JACOB FOLKERINGA**

Jacob Folkeringa

Date 12/02/19 License # 50911

STATE PROJECT NO.
2780-100 (TH 94)
027-681-040
027-701-036
229-112-002

COUNTY PROJECT NO.
1018

CITY PROJECT NO. X

DRAWN BY
K. HVIZDOS

DESIGNED BY
K. HVIZDOS

CHECKED BY
J. FOLKERINGA

COMM. NO. 1810472



CITY OF DAYTON

TRAFFIC MANAGEMENT SYSTEM
DAYTON PARKWAY INTERCHANGE
COMMUNICATIONS SCHEMATIC

SHEET
432
OF
593