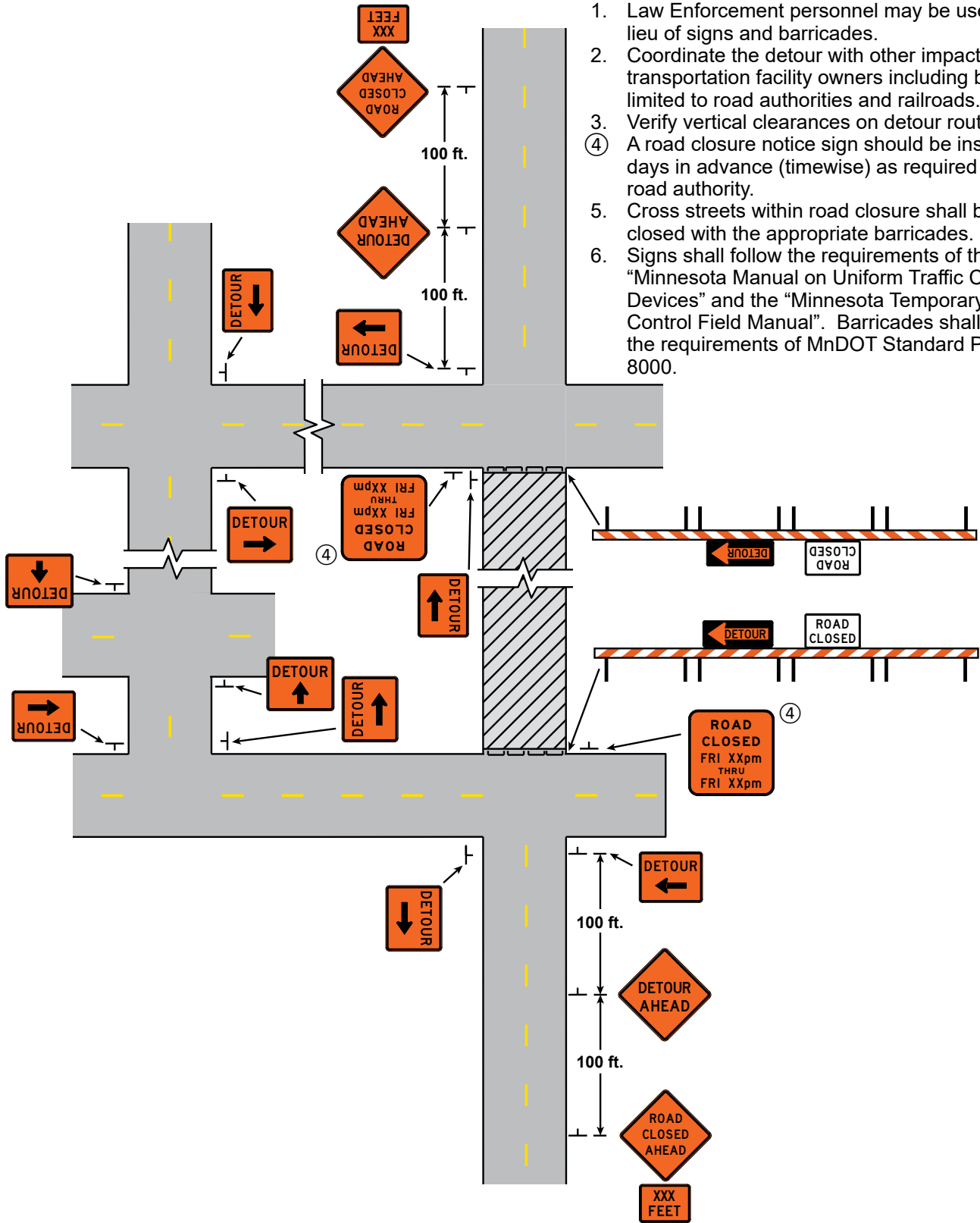


ATTACHMENT A

NOTES:

1. Law Enforcement personnel may be used in lieu of signs and barricades.
2. Coordinate the detour with other impacted transportation facility owners including but not limited to road authorities and railroads.
3. Verify vertical clearances on detour route.
- ④ A road closure notice sign should be installed 6 days in advance (timewise) as required by the road authority.
5. Cross streets within road closure shall be closed with the appropriate barricades.
6. Signs shall follow the requirements of the "Minnesota Manual on Uniform Traffic Control Devices" and the "Minnesota Temporary Traffic Control Field Manual". Barricades shall follow the requirements of MnDOT Standard Plate 8000.

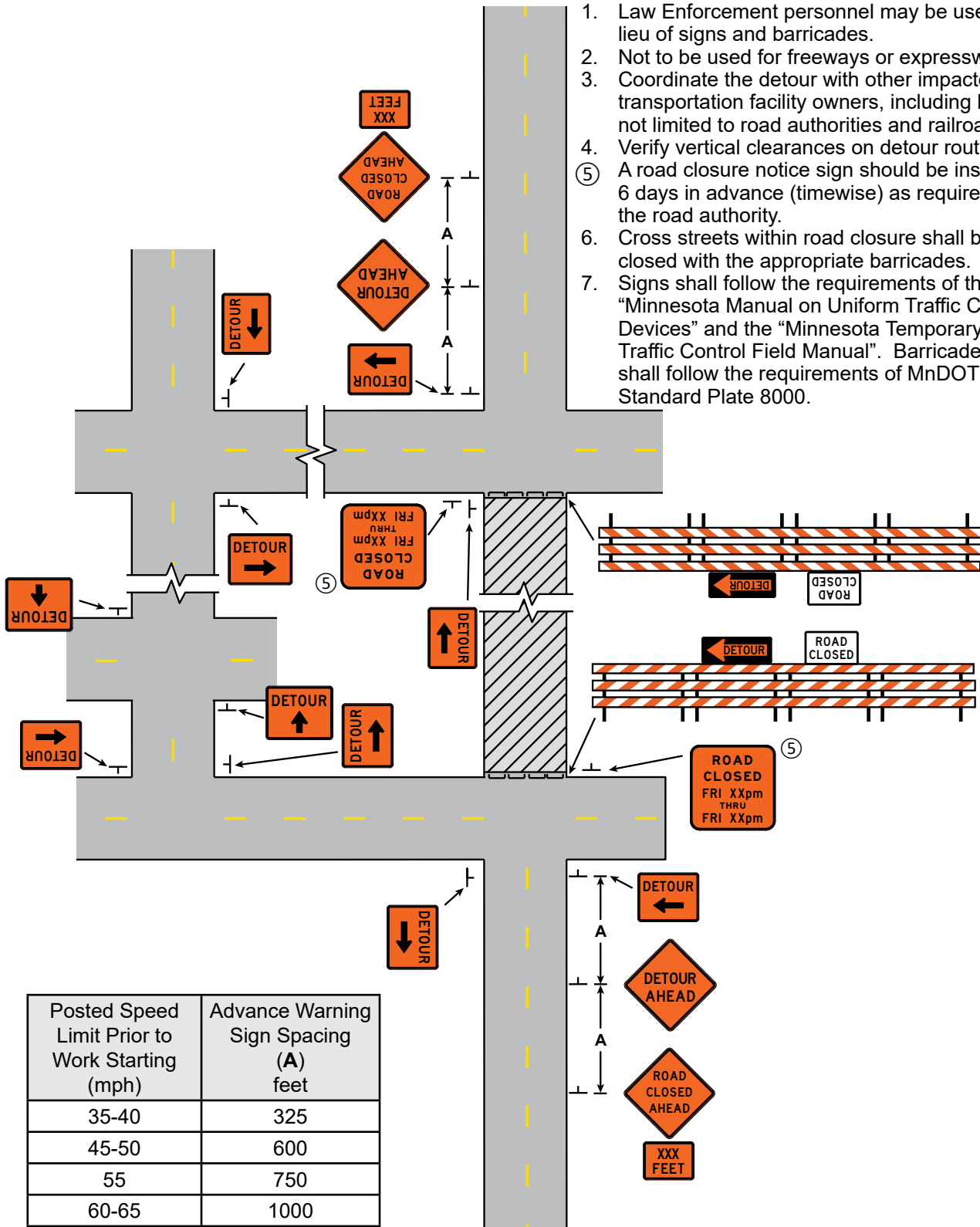


DETOUR LAYOUT
LOCAL GOVERNMENT SPONSORED SPECIAL EVENT
Speed Limit 30 MPH or Less

ATTACHMENT A

NOTES:

1. Law Enforcement personnel may be used in lieu of signs and barricades.
2. Not to be used for freeways or expressways.
3. Coordinate the detour with other impacted transportation facility owners, including but not limited to road authorities and railroads.
4. Verify vertical clearances on detour route.
- ⑤ A road closure notice sign should be installed 6 days in advance (timewise) as required by the road authority.
6. Cross streets within road closure shall be closed with the appropriate barricades.
7. Signs shall follow the requirements of the "Minnesota Manual on Uniform Traffic Control Devices" and the "Minnesota Temporary Traffic Control Field Manual". Barricades shall follow the requirements of MnDOT Standard Plate 8000.



DETOUR LAYOUT
LOCAL GOVERNMENT APPROVED SPECIAL EVENT
Speed Limit 35 MPH or Greater